

Supplementary Material

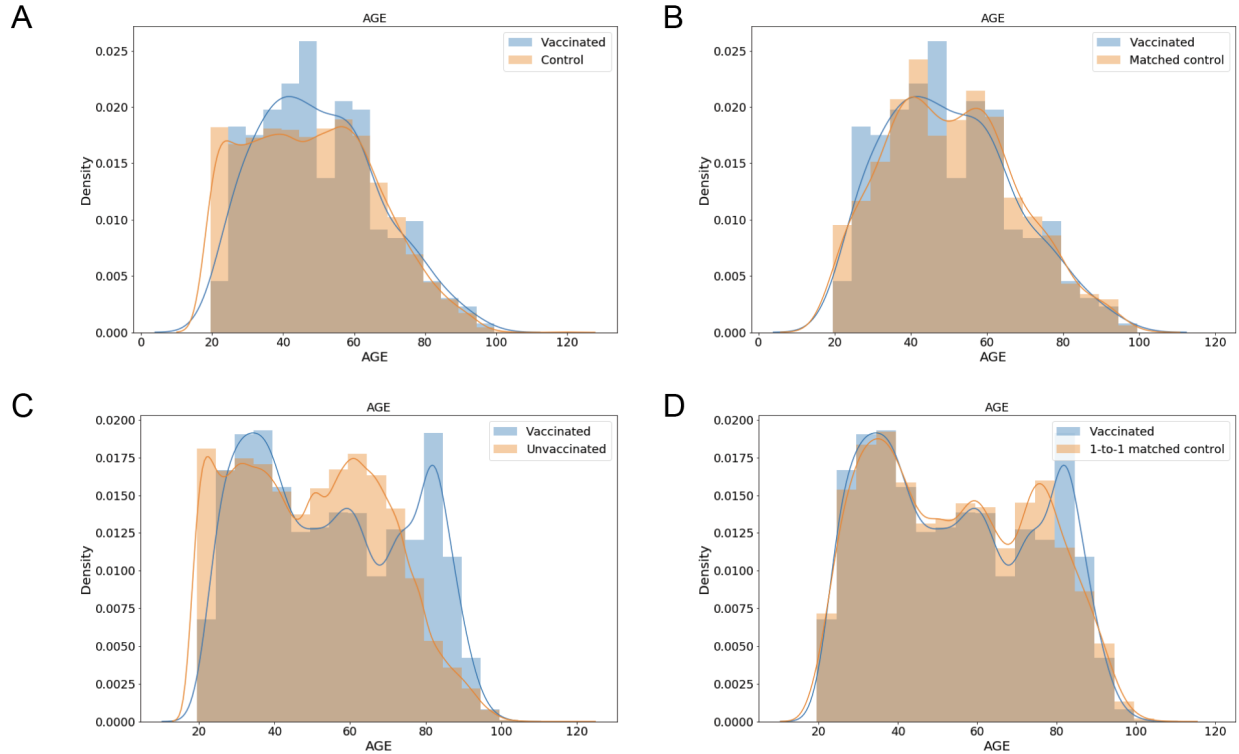


Figure S1. Age distributions for vaccinated and unvaccinated cohorts before and after propensity matching. (A-B) Distribution of ages for vaccinated patients and unvaccinated patients before (A) and after (B) 1-to-1 matching. These matched cohorts were used to assess vaccine efficacy in preventing SARS-CoV-2 infection. (C-D) Distribution of ages for COVID-19 patients who were vaccinated prior to diagnosis and unvaccinated COVID-19 patients before (C) and after (D) 1-to-10 propensity score matching. These matched cohorts were used to assess the effect of vaccination on COVID-19 disease severity.

Table S1: Follow-up, dosing, and PCR testing information for the vaccinated and 1:1 propensity-matched unvaccinated cohorts. For the vaccinated cohort, descriptive statistics on the number of doses received and the number of days of follow-up from the first vaccine dose are provided. For both cohorts, the number of PCR tests after the enrollment date are provided. For the vaccinated cohort, the enrollment date corresponds to the date of the first vaccine dose. For the 1:1 propensity-matched cohort, the enrollment date corresponds to the date of the first vaccine dose for the matched vaccinated patient.

Clinical covariate	Vaccinated cohort	1:1 Propensity-matched unvaccinated cohort
Total number of patients	31,299	31,299
Number of days follow-up from first vaccine dose - Mean - Standard deviation - IQR (25th quantile, 75th quantile) - Range (minimum, maximum)	26.9 14.7 (12.0, 40.0) (0.0, 68.0)	
Number of vaccine doses - 1 dose - 2 doses	14,232 (45.5%) 17,067 (54.5%)	
Number of PCR tests taken after enrollment date - 1 or more PCR tests - No PCR tests	4,317 (13.8%) 26,982 (86.2%)	5,150 (16.5%) 26,149 (83.5%)