

Fig. S1. Gating strategy for the characterization of leukocytes in blood and BALFs.

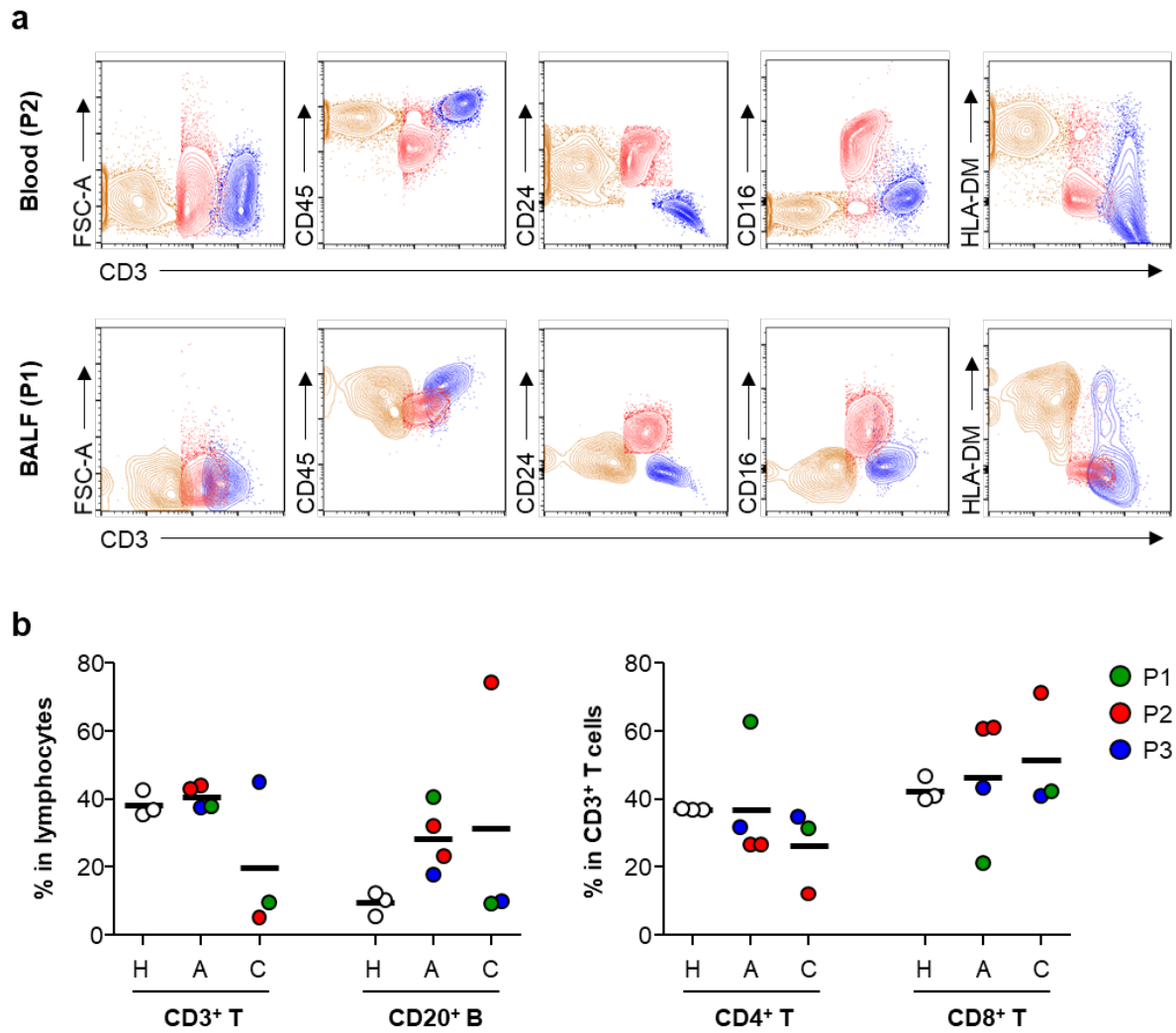


Fig. S2. Characterization of lymphocytes in PBMCs from three COVID-19 patients. **a.** Relative levels of leukocytes' makers of B (brown), NKT-like (red), and T cells (blue) in blood and BALFs from the indicated severe COVID-19 patients. These cell types are gated population from Fig. 2. **b.** Relative frequencies of CD3⁺ T cells, CD20⁺ B cells, CD4⁺ T cells, and CD8⁺ T cells among lymphocyte in blood from the indicated patients were arranged based on the collection periods, acute phase (A) and convalescent phase (C). The relative frequencies of each immune cell type from three healthy volunteers were included as controls (H, open circles). Black bars indicate the mean value.

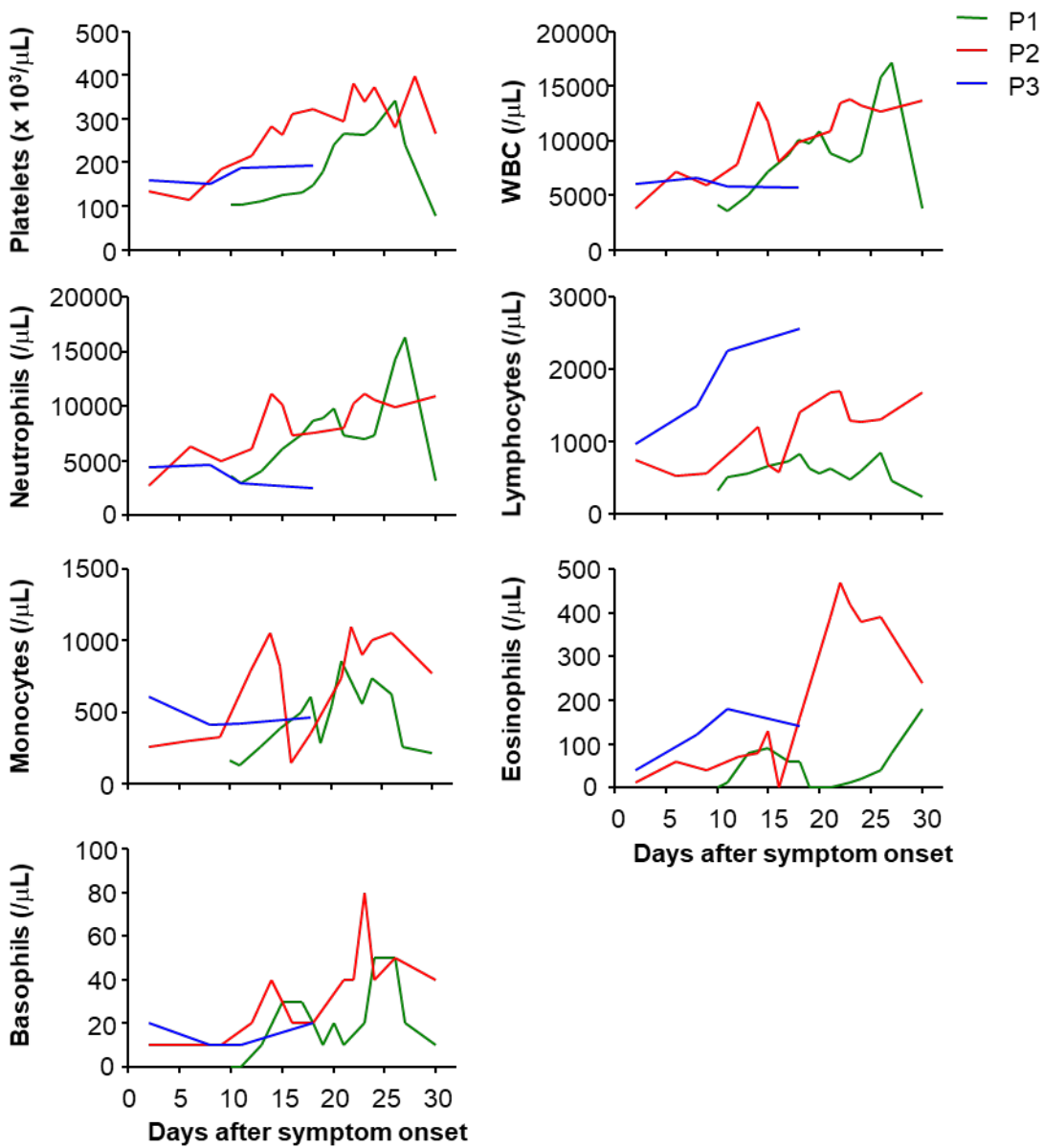


Fig. S3. Kinetics of complete blood counts in blood collected from the three COVID-19 patients.