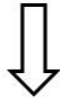
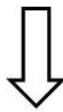


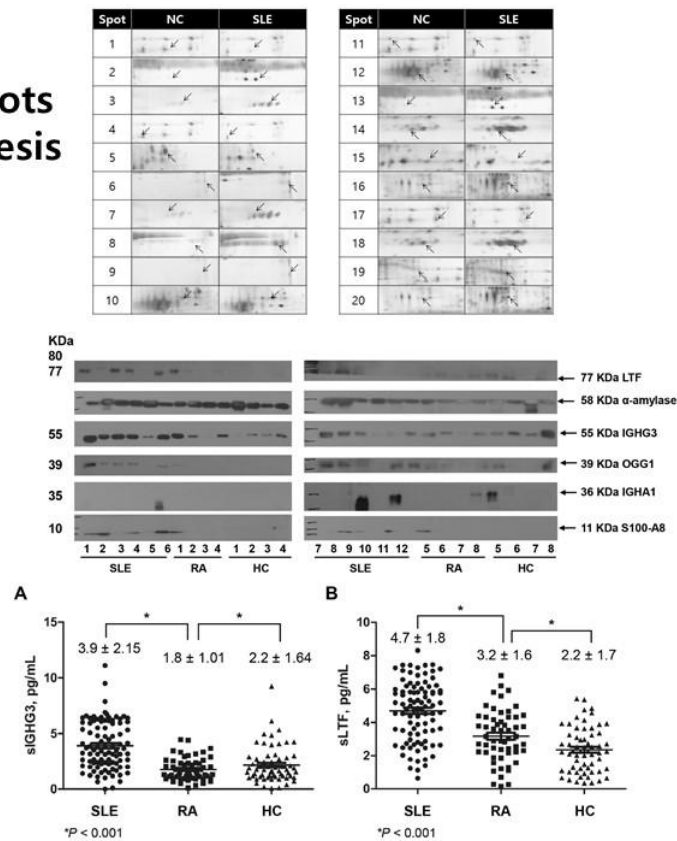
Detection of 20 spots
by 2D-electrophoresis



Comparisons of 5
proteins by WB



Comparisons 2
proteins by ELISA



Supplementary Fig. 1 Brief process to find salivary biomarker for systemic lupus erythematosus

Twenty spots were selected as candidates through 2 dimensional-electrophoresis, and the concentrations of 5 proteins were compared through western blot (WB). Finally, the levels of salivary immunoglobulin gamma-3 chain C region (sIGHG3) and lactoferrin (sLTF) were analyzed among patients with systemic lupus erythematosus (SLE), rheumatoid arthritis (RA), and healthy controls (HC).