

Data Supplement

Evidence that ovarian hormones contribute to purinoceptor-dependent natriuresis in female rats

Eman Y. Gohar, Malgorzata Kasztan, Shali Zhang, Edward W. Inscho, David M. Pollock

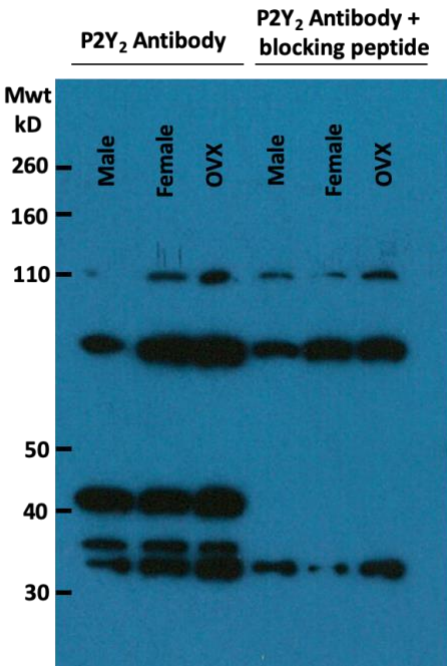
Division of Nephrology, Department of Medicine, University of Alabama at Birmingham,

Birmingham, AL

Supplemental Figure 1. Determination of the specificity of anti-P2Y₂ receptor and anti-P2Y₄ receptor antibodies by immunoblotting. Representative Western blots for inner medullary homogenates from male, ovary-intact female and OVX Sprague Dawley rats incubated with anti-P2Y₂ receptor antibody (A) or anti-P2Y₄ receptor antibody (APR-010, APR-006, respectively, Alomone Labs) in the presence (right) and absence (left) of the respective blocking peptide.

Supplemental Figure 1.

A



B

