

*Confidential until publication in Scientific Report*

## **Prediction Models of Tumor Growth Trajectories Based on Pretreatment CT Images of TKI-treated Lung Cancer Patients**

### **Authors:**

Huy Gia Truong<sup>1</sup>, Hidetaka Arimura<sup>2\*</sup>, Kentaro Tanaka<sup>3\*</sup>, Kenta Ninomiya<sup>1</sup>, Quoc Cuong Le<sup>1</sup>

### **Affiliations:**

<sup>1</sup> Division of Medical Quantum Science, Department of Health Sciences, Graduate School of Medical Sciences, Kyushu University

<sup>2</sup> Division of Medical Quantum Science, Department of Health Sciences, Faculty of Medical Sciences, Kyushu University

<sup>3</sup> Respiratory Medicine, Kyushu University Hospital

### **Corresponding authors:**

Hidetaka Arimura, PhD, Division of Medical Quantum Science, Department of Health Sciences, Faculty of Medical Sciences, Kyushu University, 3-1-1, Maidashi, Higashi-ku, Fukuoka 812-8582, Japan

[E-mail: [arimurah@med.kyushu-u.ac.jp](mailto:arimurah@med.kyushu-u.ac.jp)]

Kentaro Tanaka, MD, PhD, Department of Respiratory Medicine, Kyushu University Hospital, 3-1-1, Maidashi, Higashi-ku, Fukuoka 812-8582, Japan

[E-mail: [tanaka-k@kokyu.med.kyushu-u.ac.jp](mailto:tanaka-k@kokyu.med.kyushu-u.ac.jp)]

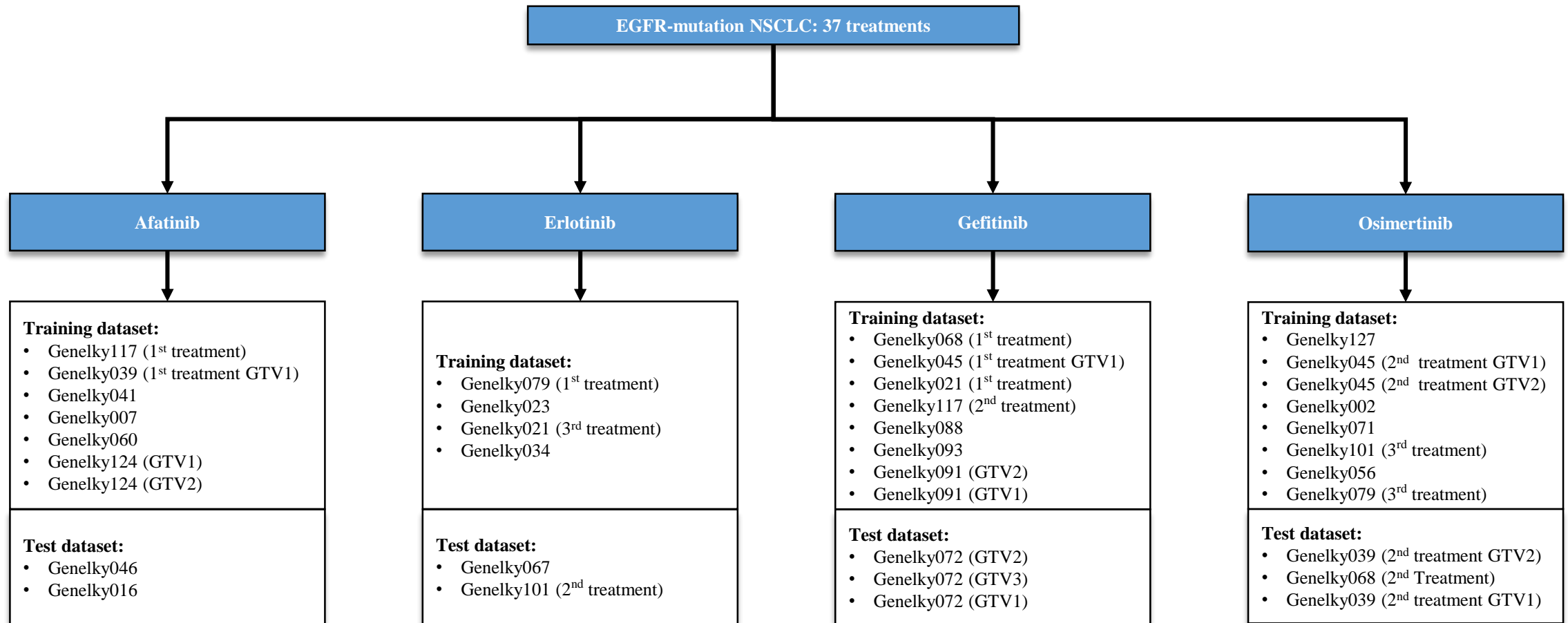


Figure S1. Patients data classification based on specific TKI treatments. EGFR: epidermal growth factor receptor, NSCLC: non-small-cell lung carcinoma, TKI: tyrosine kinase inhibitor

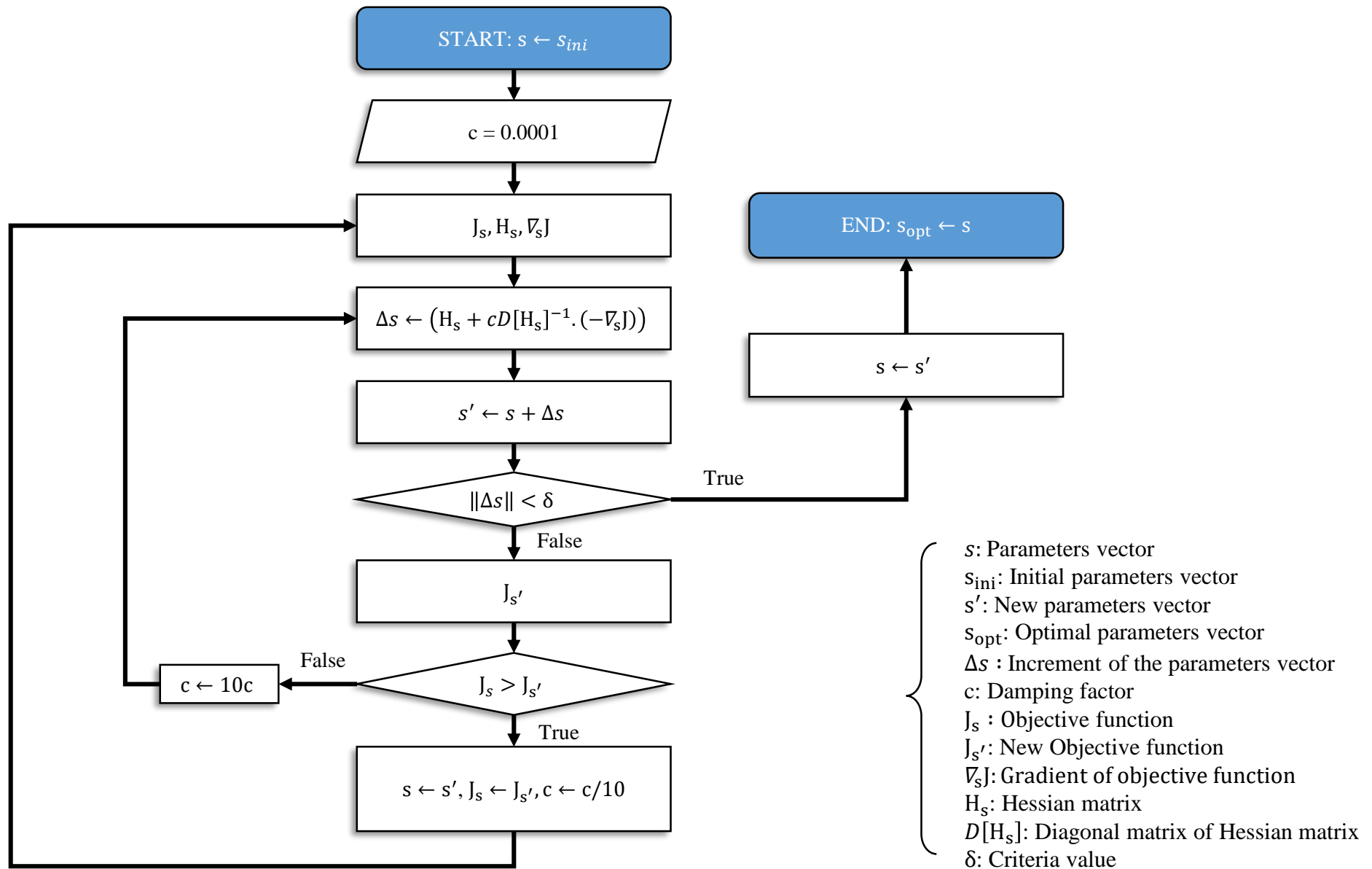


Figure S2. Levenberg-Marquardt parameters optimization procedure

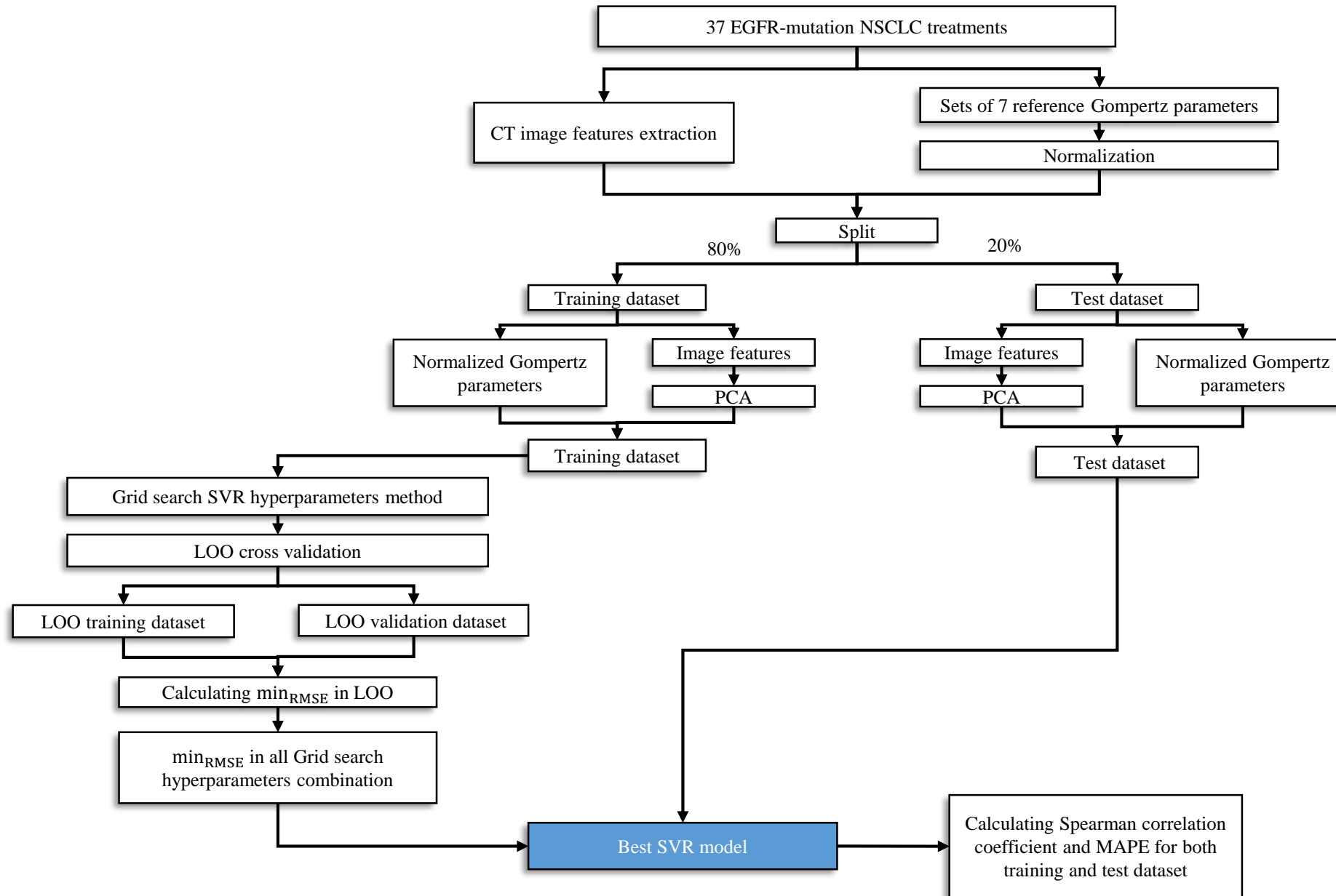


Figure S3. TGTs model based on pre-treatment CT images features using SVR. EGFR: epidermal growth factor receptor, NSCLC: non-small-cell lung carcinoma, PCA: principal component analysis, SVR: support vector regression, RSME: root mean square error, LOO: leave-one-out, MAPE: mean absolute percentage error