

Trademark Infringement Recognition Assistance System based on Human Visual Gestalt Psychology and Trademark Design

Kuo-Ming Hung (✉ hkming@mail.knu.edu.tw)

Kainan University <https://orcid.org/0000-0002-9174-5256>

Li-Ming Chen

Tamkang University

Ting-Wen Chen

Tamkang University

Research

Keywords: trademark, Gestalt psychology, trademark infringement

Posted Date: February 8th, 2021

DOI: <https://doi.org/10.21203/rs.3.rs-174352/v1>

License:  This work is licensed under a Creative Commons Attribution 4.0 International License.

[Read Full License](#)

Version of Record: A version of this preprint was published at EURASIP Journal on Image and Video Processing on July 22nd, 2021. See the published version at <https://doi.org/10.1186/s13640-021-00566-2>.

RESEARCH

Trademark infringement recognition assistance system based on human visual Gestalt psychology and trademark design

Kuo-Ming Hung^{1*†}, Li-Ming Chen² and Ting-Wen Chen²

*Correspondence:

hkming@mail.knu.edu.tw

¹Department of Information Management, Kainan University, No.1 Kainan Rd., Luzhu Dist., 33857 Taoyuan, Taiwan (R.O.C.)

Full list of author information is available at the end of the article

[†]Equal contributor

Abstract

Trademarks are common graphic signs in human society. People used this kind of graphic sign to distinguish the signs of representative significance such as individuals, organizations, countries, and groups. Under effective use, these graphic signs can bring maintenance and development resources and profits to the owner. In addition to maintenance and development, organizations that have obtained resources can further promote national and social progress. However, the benefits of these resources have also attracted the attention of unfair competitors. By imitating counterfeit trademarks that appear, unfair competitors can steal the resources of the original trademark. In order to prevent such acts of unfair competitors, the state has formulated laws to protect trademarks. In the past, there have also been researches on similar trademark searches to assist in trademark protection. Although the original trademark is protected by national laws, unfair competitors have recently used psychological methods to counterfeit the original trademark and steal its resources. Trademarks counterfeited through psychology have the characteristics of confuse consumers and do not constitute infringement under the law. Under the influence of such counterfeit trademarks, the original trademark is still not well protected. In order to effectively prevent such trademark counterfeiting through psychology, this article proposes new features based on trademark design and Gestalt psychology to assist legal judgments. These features correspond to a part of the process that is not fully understood in the human visual system and quantify them. In the experimental results, we used past cases to analyze the proposed assistance system. Discussions based on past judgments proved that the quantitative results of the proposed system are similar to the plaintiff or the judgment to determine the reasons for plagiarism. This result shows that the assistance system proposed in this article can provide visually effective quantitative data, assist the law to prevent malicious plagiarism on images by unfair competitors, and reduce the plagiarism caused by the similar design concepts of late trademark designers.

Keywords: trademark; Gestalt psychology; trademark infringement

Introduction

Trademarks are graphics that can be seen everywhere in human society. People use it as a recognition mark to distinguish countries, groups, and other representative signs that represent individuals or organizations [1]. These trademarks usually consist of various well-known entities or abstract graphics and symbols. In addition, they may also be hearing, smell, behavior, or graphics with distinctive features [2]. The origin of the trademark is that ancient craftsmen signed or marked their artwork

1
2
3
4
5
6 or practical products to recognition the producer or guarantee the quality of the
7 product. These signatures and marks have evolved to this day and become today's
8 trademark registration and protection system [3]. Trademarks have the following
9 three common functions [4]:

- 10 • Recognition source or ownership
- 11 • Ensure that the goods or services have the same level of quality or character-
12 istics
- 13 • Advertising

14
15 After effectively performing the above functions, ordinary people can quickly un-
16 derstand the image and reputation of the organization or product through the
17 trademark, and the organization with the trademark can also obtain the resources
18 to maintain and develop the organization itself.

19
20 Under the condition of effective use of trademarks, it can obtain maintenance
21 and development resources for organizations that own trademarks. However, these
22 resources have also drew the attention of unfair competitors. Unfair competitors
23 imitate similar trademarks to confuse people by its similarity. When people are
24 confused, the resources that originally belong to the trademark owner will be stolen
25 by unfair competitors. Moreover, unfair competitors damage the reputation of the
26 trademark through inferior products or services. These conditions have led to the
27 effect that trademark owners are unable to obtain sufficient resources to maintain or
28 develop the organization. At the same time, it further prevents organizations from
29 developing new technologies that contribute to the country and society. In order
30 to advance the technology level of society and protect the right of the trademark
31 owner, many countries allow trademark owners to register their trademarks. This
32 method allows registered trademarks to be protected by national laws and prevents
33 unfair competitors from indirectly preventing national progress.

34
35 While unfair competitors intend to steal the resources of the trademark organiza-
36 tion, they will imitate similar trademarks to deceive people, steal the resources that
37 the organization deserves, and damage the image and reputation of the trademark.
38 Assuming that the behavior of unfair competitors is not prevented, the organization
39 that owns the trademark would lost sufficient resources to maintain and develop it-
40 self. Furthermore, such behavior prevents the organization from developing novel
41 technologies that contribute to the progress of the country and society. Therefore,
42 many countries allow trademark-owned organizations to register their trademarks.
43 After legitimate registration, trademark owners can claim their rights protected by
44 national laws and prevents unfair competitors from stealing resources and profits.

45
46 However, even though registered trademarks seem already to be protected by law,
47 there are still endless cases of trademark infringement in the world. In these cases,
48 in addition to malicious infringement by unfair competitors, there are also some late-
49 comers who violated the law since they are unfamiliar with local legislation. There-
50 fore, the way of related work in the past was to search for similar features from a
51 huge trademark database to check whether the trademark constitutes infringement
52 for research purposes. In related works of searching for trademarks using digital
53 images, a common method was to extract features from the high-frequency images,
54 and then find the nearest trademark through the distance between the features
55 [5, 6]. In addition, there are also methods to directly use the binarized image as a
56
57
58
59
60
61
62
63
64
65

[width = 3.5cm]fig01a.pdf [width = 3.5cm]fig01b.pdf [width = 3.5cm]fig01c.pdf
 (a) (b) (c)

Figure 1 Illustrate a hypothetical trademark case that uses visual psychology to confuse human vision. (a) Hypothetical well-known trademark; (b) Hypothetical counterfeit trademark; (c) Examples of possible confusion in environmental impact;

feature to perform image matching search [7]. Meenalochini et al. [8] proposed the use of perceptual hashing algorithm to search for similar images. Showkatramani et al. [9] utilized the recently popular Convolutional Neural Network (CNN) to train a variety of trademarks in different environments, and implemented the computer vision trademark identification system of trademarks in different environments. Different from the use of images in trademark recognition, such as F. M. Anuar et al. [10, 11] proposed to use Tversky’s theory of similarity to search for the similarity between semantic meanings based on the semantic combination in trademarks. H. H. N. Abadi et al. [12] used artificial intelligence to classify trademarks registered by the US Trademark Office.

The related work described above has significant results in similar trademark inspections and classifications. Nevertheless, unfair competitors recently started to produce similar trademarks through Gestalt psychology. This kind of similar trademark not only confuses people with the original registered trademark, but also avoids the similar characteristics of the trademark, which make it difficult to judge whether they are plagiarism in related works. Related reports are as described in [13, 14] literature, this article uses Figure 1 as an example. Suppose there is a well-known trademark as shown in Figure 1(a), and an unfair competitor wants to use the reputation of the well-known trademark to draw people’s attention. Considering the basis of legal judgment, unfair competitors refer to the existing cognition of Gestalt psychology and combine their own trademarks with well-known trademarks to produce infringing trademarks such as Figure 1(b). Under normal circumstances, people can easily distinguish the difference between the two trademarks. However, as shown in Figure 1(c), when the distance in the human visual system and the influence of the surrounding environment are considered, people will confuse the two trademarks due to the change of characteristics. Just when people are confused due to their existing cognition, infringing trademarks have already robbed benefits from well-known trademarks, and at the same time damaged the reputation and image of well-known trademarks.

In the past actual cases [15], since there was no suitable image analysis system to assist in legal judgments, most cases were judged based on the semantic meaning of trademarks. Also take Figure 1 as an example. In semantic analysis, the trapezoid is a general figure and cannot be used as a basis for recognition. And the symbols appearing in the two trademarks cannot be regarded as similar trademarks since they are “Gesture” and “Glasses” respectively. Although in this case we had an objective and fair semantic judgment, we ignored that the judgement did not consider two trademarks from aspect of human visual system. This result has enabled unfair competitors in recent years to use Gestalt psychology to steal the reputation of the original trademark. Some consumers even misunderstood the counterfeit trademarks of unfair competitors as original trademarks.

1
2
3
4
5
6
7
8
9
10
11
12
13
14
15
16
17
18
19
20
21
22
23
24
25
26
27
28
29
30
31
32
33
34
35
36
37
38
39
40
41
42
43
44
45
46
47
48
49
50
51
52
53
54
55
56
57
58
59
60
61
62
63
64
65

Considering the influence of Gestalt psychology on trademark reputation, this paper refers to and attempts to implement a system that includes elements of attracting people in trademark design [16, 17]. In trademark design, these attractive elements are called “visual weight” [16, 17], and the details will be introduced in section 2. Based on the elements mentioned in trademark design, this article realizes and extracts corresponding features in trademark image processing. We discuss the impact of these characteristics in the experimental results section, and use past cases to discuss the correctness of the assistance system.

The main contributions of this article are as follows:

- According to trademark design and Gestalt psychology, a new seven-character visual judgment aid system is proposed. These features correspond to a part of the process that is not fully understood in the human visual system and quantify them.
- Discuss the cases that have been finalized in the past based on the experimental results, and discuss the differences before and after considering the similarity of visual images.
- Provide a visual-based trademark judgment system to assist the law to prevent malicious plagiarism on images by unfair competitors, and reduce plagiarism due to similar design concepts by less advanced trademark designers.

In the next chapter, we introduce trademark design and visual psychology. Subsequently, the “visual weight” element in the implementation of the trademark design is explained, and the system flowchart proposed in this article is explained. In the experimental results, we use some cases to verify the system proposed in this article. When verifying, we explain the relationship between existing trademark search methods, trademark design and Gestalt psychology to explain why the existing methods cannot assist legal judgments. Finally, we will add the actual judgments of some cases to this system for discussion, explaining that visual image and semantic analysis are equally important factors in judging trademark similarity. At the same time, it explains that the system proposed in this article can help latecomers reduce plagiarism caused by similar design concepts.

Method

Trademark Design and Gestalt psychology

In the trademark design, S. Bradley [16, 17] proposed an influential element named “visual weight” based on human vision. The main purpose of “visual weight” is to make the designed trademark have characteristics that can draw human attention and represent the image of the organization or product. The original features mentioned by S. Bradley in “visual weight” are as follows:

- Size:
For human attention, large elements are more attractive than small elements.
- Shape: Since the impression of irregular shapes is easily replaced by regular shapes, objects with regular shapes are more impressive than those with irregular shapes.
- Color:
Warm-colored objects are easily recognized as the foreground, while cool-colored objects are easy to blend with the background. In addition, red is considered the darkest color, and yellow is considered the lightest color.

- Value:
Dark elements are easier to notice than light elements.
- Texture:
Texture makes the element look like a three-dimensional object, giving the appearance of mass and physical weight. Therefore, textured elements draw human attention more than untextured objects.
- Position:
The foreground object is easier to become the main area of the logo than the background object. The farther an element is from the main area, the easier it will be noticed.
- Orientation:
In the display direction of the object, diagonal display with diagonal elements can give people the strongest impression, followed by vertical display, and horizontal display gives the lowest impression.

Gestalt psychologist K. Koffka explained the theory of human visual perception through the proposed perceptual organization [18]. K. Koffka believes that when everyone recognizes the images they see, including children and uncivilized people, they recognize the meaning of things in front of them based on organizational experience. In perceptual organization, the following points describe human visual perception:

- The stronger the difference between the foreground graphic object and the background, the more it can become the focus of human vision.
- Close graphic objects can easily form a whole.
- Coordinated graphic objects are easy to form a whole, and uncoordinated graphic objects are easy to be separated.
- When the distance between each part is equal, the graphic objects of the same color will form a whole.
- According to people's existing cognition, even if it changes drastically, it can be recognized from its characteristics.
- If the graphic objects have directionality, graphic objects with the same directionality can easily form a whole.

Proposed Trademark Graphic Recognition Features and Trademark Similarity Comparison System based on Visual Weight

From the description of the trademark design in the previous section, we can learn that how to draw human attention through vision, and to associate its image and reputation, has always been the purpose of a trademark. However, in the case of trademark judgments, due to the lack of objective image judgment methods, the judgments have been implemented through semantic meaning. This approach gives unfair competitors an opportunity to constantly use similar graphics but different semantics to counterfeit well-known trademarks as shown in Figure 1. Due to the different semantics of counterfeit trademarks, trademarks cannot be protected by national laws. Visually, counterfeit trademarks confuse consumers and further steal the resources and profits of well-known trademarks. In order to more reliably protect the image and reputation of trademarks, there must be a system that can assist in the judgment of trademarks on graphics. The graphic judgment system is not

to replace semantic judgment, but to jointly deal with the problem of counterfeit trademarks to achieve the effect of trademark protection. Therefore, based on the visual perception theory and visual weight characteristics described in the previous section, this article proposes a system to assist in the judgment of trademark graphics.

Proposed Trademark Graphic Recognition Features based on Visual Weight

The first feature mentioned by visual weight is size. Using human vision to differentiate the size characteristics of the two trademarks is to compare the difference in size between the two. In image processing, the simplest and similar processing method is to take out the trademark that separates the background and calculate the difference between the two pixels. Since trademarks have different scales in each layout, this article uses all pixels in the region of interest (ROI) as the normalization parameter N_{SIZ} of the feature. Considering that most images nowadays use lossy compressed images for storage, we use adaptive threshold [19] processing in the work of separating foreground and background. After obtaining the best foreground distance through basic image processing, the system would count its pixels to obtain the trademark pixel T_{SIZ} . Through the normalization of formula (1), the normalized trademark size feature F_1 is obtained.

$$F_1 = \frac{T_{SIZ}}{N_{SIZ}} \quad (1)$$

The second feature is shape. Also considering the changes of trademark images in various layouts, the shape feature does not use the perimeter or binarized area of the trademark object. This article extracts the shape feature F_2 using circularity for quantification to reduce the impact of layout changes. When the Circularity formula calculates a graphic object, it uses the area of the graphic object for quantitative calculation, so that the circle and the hollow ring present different values. Due to trademark objects, even if there is a gap between the graphic objects, each object is designed to have a certain degree of coordination. In the description of perceptual organization, these coordinated graphic objects make the trademark appear as a whole in human vision. Therefore, when we use the circularity formula to quantify the shape feature, we use the area of the trademark object as the variable for the quantitative calculation according to the previous description. The circularity calculation method is shown in formula (2), T_P is the circumference of the trademark object.

$$F_2 = \frac{4\pi T_{SIZ}}{(T_P)^2} \quad (2)$$

The third feature is color. When extracting the characteristics of color, in addition to the knowledge of visual perception theory and trademark design, the deactivation reaction of human vision should still be considered [20]. The visual deactivation reaction is that humans produce optical illusion such as complementary colors and persistence of vision based on the density or color difference between the foreground and background of the object. Considering the visual perception theory, trademark

design and visual deactivation, the color feature F_3 is extracted as formula (3) in this article. Where $T_{r,c}$ represent the pixels in the processing trademark, R_{TM} and C_{TM} are the rows and columns of the trademark object, respectively, and ch means the image channels.

$$F_3 = \sqrt{\sum_{ch} \left(\frac{\sum_r^{R_{TM}} \sum_c^{C_{TM}} (T_{r,c})}{R_{TM} \times C_{TM}} \right)^2} \quad (3)$$

The fourth characteristic is value. In the trademark design, value pointed out that darker elements are easier to be noticed than lighter elements. The main reason is that lighter elements give humans a lower sense of oppression than dark-colored elements, so that the elements in human society have more light-colored elements [17]. Among the many lighter elements, embedding an object with a darker element will make the object easy to be noticed. This kind of strongly discontinuous picture is called contrast in image processing. In general trademark design, in order to increase the chance of the trademark being noticed by people, the contrast between the background and the foreground is quite significant. Therefore, the feature F_4 of the extracted value in this article focuses on the contrast of the foreground, and the calculation method is shown in formulas (4) and (5). Where the $*$ symbol in formula (4) is the convolution operation, and T_{msk} is the coordinate of the trademark pixel. Formula (5) is the common gray-scale processing, and P_g is the defined gray-scale parameter [20].

$$F_4 = \frac{\max_{r,c}(G_{r,c} * T_{msk}) - \min_{r,c}(G_{r,c} * T_{msk})}{\max_{r,c}(G_{r,c} * T_{msk}) + \min_{r,c}(G_{r,c} * T_{msk})} \quad (4)$$

$$G_{r,c} = \sum_{ch} (T_{r,c}(ch) \times P_g(ch)), \quad P_g = [0.299, 0.587, 0.144] \quad (5)$$

The fifth feature is texture. In the description of visual weight, the texture feature combines trademarks with common things in human life to increase attractiveness. Common things include elements such as light sources, shadows, and three-dimensional perspectives, which make the logo graphics on the plane feel like three-dimensional objects. When the same figure is combined with different texture features, visual perception can not only recognize the figure, but also the type of combined texture features. From the perspective of the frequency domain of the signal system, the texture feature only changes the high-frequency information of the graphics. The original meaning of graphics at low frequencies has not been changed by texture features. In image processing, the basic feature of object recognition is to extract the corresponding high-frequency features from the object image. This feature is also considered in the related literature based on image processing in the related works [5, 6]. Therefore, the extraction method of texture feature F_5 in this article uses the image high-frequency feature extraction method.

Position is the penultimate feature. S. Bradley described the position feature as a foreground object that easily becomes the main area of a trademark. Moreover, he also pointed out that when some elements are far away from the main area, these

[width = 8.5cm]fig02.pdf

Figure 2 Proposed the implementation flow chart of proposed trademark similarity comparison system

elements will become the visual focus. In this part of this article, we use formulas (6) and (7) to find the centroid (C'_{xi}, C'_{yi}) of each object. Then, combine the centroid of each object through formula (8). Finally, the position feature F_6 is normalized and calculated by formula (9). Where, i is the index of objects; $S_y(x)$ is the length of the y-axis at coordinate x ; $S_x(y)$ is the length of the x-axis at coordinate y ; and O_A is the area of the object.

$$C'_{xi} = \frac{\int x S_y(x) dx}{O_{Ai}} \quad (6)$$

$$C'_{yi} = \frac{\int y S_x(y) dy}{O_{Ai}} \quad (7)$$

$$(C'_{xi}, C'_{yi}) = \left(\frac{\sum C'_{xi} O_{Ai}}{T_{SIZ}}, \frac{\sum C'_{yi} O_{Ai}}{T_{SIZ}} \right) \quad (8)$$

$$F_6 = \sqrt{\sum_{a \in (x,y)} \left(\frac{C'_a}{\alpha_{TM}} \right)}, \quad \begin{array}{l} a = x, \alpha = C \\ a = y, \alpha = R \end{array} \quad (9)$$

The last feature is orientation. Visual weight means that when a graphic is composed of multiple objects, objects with the same orientation are easily regarded as the same object by visual perception, and objects with different orientations are regarded as different objects. In this article, we use an ellipse to approximate the irregular shape of the trademark. Then, the angle between the main axis of the ellipse and the horizontal line is taken as the original orientation feature. Finally, the original orientation feature is normalized to $[0, 1]$ as the trademark orientation feature F_7 .

Trademark Similarity Comparison System based on Visual Weight

After introducing the recognition features proposed based on visual weight, we introduce the proposed trademark similarity comparison system. Figure 2 shows the flow chart of the proposed system. First, the original and counterfeit trademark image data input based on actual cases. From the input image data, the seven normalized features of size, shape, color, value, texture, position and orientation are extracted according to the description of the previous visual weight. From the features extracted from the case images, use formulas (10) and (11) to calculate the standard deviation σ_k . Where k represents the characteristic index, o_i is sample index.

$$D_k = \|F_k - \bar{F}_k\|_2 \quad (10)$$

$$\sigma_k = \sqrt{\frac{1}{M} \sum_{o_i=1}^M (D_k - \mu_k)^2} \quad (11)$$

Next, we use formulas (12) and (13) to calculate the feature quantity threshold T_σ that takes into account human visual errors. After obtaining the characteristic quantity valve value T_σ , calculate the valve value \mathbb{T} according to formulas (14) to (16). In the formula, $\text{Mo}(\cdot)$ represents the mode; $Q_1(\cdot)$ is the first interquartile difference; w_k is the weight of the feature. The finally obtained valve value \mathbb{T} is the valve value that assists the system to judge.

$$T_\sigma = \text{Mo}(\mathbb{F}_k) \quad (12)$$

$$\mathbb{F}_k = |D_k < \sigma_k|_0, \quad \forall k \quad (13)$$

$$\mathbb{T} = Q_1(\mathcal{R}_N) \quad (14)$$

$$\mathcal{R}_N = 1 - \omega + \sum_k D_k w_k \quad (15)$$

$$\omega = \mathbb{F}_k \geq T_\sigma \quad (16)$$

Since in the human visual system [21], there are still biological and psychological processes that are not yet fully understood. Whether counterfeit trademarks cause human confusion is one of the parts we could discuss. At the same time, when humans recognize images through vision, if some of the features of the image are not obvious, the human brain will ignore the features and turn to use other organizational experience to recognize available features for identification [18]. Taking these factors into account, this article will further discuss the seven characteristics results in the experimental results, and discuss it in conjunction with the previous known cases.

Experimental Results and Discussion

This implementation uses Graphis public trademark database [22], Trademark database of the Japan Platform for patent (JPP) [23] and Trademark database of the United States Patent and Trademark Office (USPTO) [24]. The Graphis public trademark database has 5906 trademark images. There are 5,450 JPEG images with a size of 670×670 pixels in the database, 254 images with a size less than 670×670 pixels, and 202 images with a size greater than 670×670 pixels. The trademark database of USPTO is a trademark database containing all trademarks registered in the United States.

Although there are still many cases related to trademark infringement in society today, it is still difficult to collect trademark images related to the case. Taking the difficulty of image search in actual cases into account, the counterfeit trademark images used in this article are mostly counterfeit trademarks similar to the original trademarks registered by the original trademark owners in advance. Such counterfeit trademarks are the mark that original trademark owners believe that they have the

opportunity to confuse customers and further damage the reputation of the original trademark. Therefore, trademark owners first registered these numerous counterfeit trademarks to prevent unfair competitors from using similar methods to damage the reputation of the original trademarks.

Figure 3 is the statistics of the number of features that use pre-registered similar trademarks and different trademarks at a distance less than the standard deviation. There are 391 groups of pre-registered similar trademarks in the picture, and 363 groups of different trademarks. It can be seen from Figure 3 that among the seven features in similar trademarks, most of them have four or five feature distances that are less than the standard deviation. When the trademarks are not the same, there are usually two to three features whose distances are less than the standard deviation. Taking into account the error of the simulated human vision, the mode $\text{Mo}(\cdot)$ is used to identify the feature quantity threshold T_σ of similar trademarks.

Figure 4 shows the statistics of each feature whose distance is less than the standard deviation. In the figure, we can notice that the characteristic of F_5 , whether it is a similar trademark or not, are not below the standard deviation. This shows that compared with the past research using F_5 feature, the search and recognition of digital trademark features are quite effective. F_5 feature can clearly distinguish different trademarks, and accurately search for similar trademarks by feature distance. Since the F_5 feature is quite accurate, it cannot directly describe the confusion caused by the human visual system seeing the trademark. On the standpoint that trademarks are designed to attract consumers, this advantage has made it impossible for past research to be applied to assist the law and the recognition of similar trademarks.

In addition, Figure 4 allows us to further analyze the results of Figure 3. From Figure 4 we can notice the different trademark's features in F_3 , F_4 and F_7 , and the feature distance is still easily smaller than the standard deviation. The F_3 feature is mainly attributed to color. If features of different shapes have the same color, the feature distance may be lower than the standard deviation. The F_4 feature is mainly the contrast on the trademark. Most trademarks have the main goal of attracting human attention, and the mention of strong contrast in "visual weight" makes the trademark easy to attract attention. Therefore, the F_4 feature is indeed easily smaller than the standard deviation in terms of distance comparison. The orientation of F_7 features mainly depends on the ellipse encircled by the overall scope of the trademark. When the ellipse circled by the trademark arrangement position is similar, the calculated angle will be quite similar, resulting in the distance being easily smaller than the standard deviation.

Although the features of F_3 , F_4 and F_7 are easily misjudgmental, when analyzing trademark graphics in combination of features, they will become a key feature that makes human vision confused due to trademark similarity. Next, we will explain through actual case analysis.

In case [25], the proposed system only has a significant distance at F_4 and F_5 , while other features are less than σ_k . The results of Table 1 show that it is as seen

[width = 8.5cm]fig03.pdf

Figure 3 Statistics of the number of features whose distance is less than the standard deviation

[width = 8.5cm]fig04.pdf

Figure 4 Statistics where the distance of each feature is less than the standard deviation

Table 1 Past trademark litigation cases were evaluated using the proposed image similarity resolution system

	[25]	[26]	[27]	[15] case 1	[15] case 2
F_1	0.0116	0.0908	0.2133	0.0830	0.1051
F_2	0.0018	0.6443	0.1852	0.0103	0.0083
F_3	0.0769	0.0002	0.1816	0.0701	0.1057
F_4	0.2532	0.3801	0.0000	0.0000	0.0000
F_5	0.0942	0.1089	0.1054	0.0824	0.0881
F_6	0.0096	0.0277	0.0120	0.0132	0.0040
F_7	0.0004	0.0073	0.00110	0.0005	0.0014
Verdict	Infringement	Dismiss	Dismiss	Dismiss	Dismiss
Proposed output	Similar	Dissimilar	Dissimilar	Similar	Dissimilar

Italic: distance $< 2\sigma_k$; **Bolder:** distance $< \sigma_k$;

by human vision, that is, the two can be seen differently by careful observation, but other characteristics are quite similar, which is easy to cause confusion. The results of past judgments also indicated that the defendant’s trademark was judged in favor of the plaintiff due to it “may dilute the uniqueness of the plaintiff’s trademark.”

Case [26] is a recent case where the plaintiff was sentenced to lose. The results of Table 1 show that the proposed system is similar in features of F_3 and F_6 . However, there is a huge gap in the characteristics of F_2 , which is like showing that the shape of the plaintiff and the defendant’s trademark is not easy to confuse people. In the actual judgment, the plaintiff in this case tended to file a complaint with similar meaning. The plaintiff believed that the meaning of the trademark “caught from the sea” was similar to the meaning of the defendant’s trademark “caught from the river.” Nevertheless, the judgment found that “sea” and “river” have a specific connection, but it will not confuse people. At the same time, after confirming that other items such as merchandise items and trademark signs would not confuse people, the final judgment indicated that the defendant did not constitute an infringement.

Case [27] is a case where the plaintiff was judged to lose the case many years ago. In this case, the plaintiff used the overall shape and color of the trademark design and imitation of some objects as the reasons for filing a lawsuit. The result of the judgment shows that the design of double concentric circles is a universal design figure and is less recognizable. As for the corrugated pattern in the trademark, the overall graphic of the plaintiff’s trademark represents long hair, but the overall graphic of the defendant’s trademark represents heat. Although the color difference was not described, the overall appearance, pronunciation, and semantics were completely different, which made the final judgment believe that there is no doubt of confusion. In the analysis results of Table 1 in this article, based on the similarities described by the plaintiff, the corresponding features are F_2 , F_3 and F_5 . Feature F_2 calculating the distance shows that although the whole object is visually double concentric circles, the pattern of the inner circle is different, and the area of the whole pattern makes the shape calculation result obviously different. From the analysis of feature F_3 , the plaintiff’s trademark is green and black, while the defendant is pure green. Normal people’s vision can easily detect the differences, just as the distance calculated from feature F_3 is greater than $2\sigma_k$. The calculation

1
2
3
4
5
6
7
8
9
10
11
12
13
14
15
16
17
18
19
20
21
22
23
24
25
26
27
28
29
30
31
32
33
34
35
36
37
38
39
40
41
42
43
44
45
46
47
48
49
50
51
52
53
54
55
56
57
58
59
60
61
62
63
64
65

result of feature F_5 is also greater than $2\sigma_k$, indicating that the overall F_5 difference between the two is far. The calculation results of the above three characteristics are in line with the results of human visual perception observing the trademarks of the two parties.

Case 1 and case 2 in [15] are also cases where the plaintiff lost. In case 1, the plaintiff believed that the defendant's trademark was similar in shape, color and design to the trademark owned by it, which violated the trademark rights. However, the verdict at that time indicated that "star" was a general term, with weak discernibility, and could not be used as a recognition criterion. "preya" and "bucks" have no semantic meaning. Pronunciation, "Starpreya" is pronounced as "Star Freya", which is not similar in syllable to "Starbucks". Moreover, the semantic meanings of the patterns in the trademarks were "Sirens-mermaids" and "Goddesses", so that the final judgment was not considered to be similar trademarks. Similarly, the shape F_2 , color matching F_3 and design pattern texture feature F_5 recognized by the plaintiff were used to analyze the state of human attention to the trademark. When only looking at the shape feature F_2 , the calculation result is less than σ_k . However, it can be known from the judgment statement that "the design of double concentric circles is a universal design figure", so the similarity cannot be recognized by this feature alone. Different from the previous case, in the F_3 feature, due to the outer circle green and the inner circle black have the same color, the calculation result also less than σ_k . F_5 texture feature is one of the few features larger than $2\sigma_k$ in this case. Although the verdict of this case was that the plaintiff lost the case, the characteristics described above and other characteristics of the system are less than $2\sigma_k$. The combination of these results shows that the two trademarks are confused in human visual perception. However, the verdict was based on the difference between hearing and semantics, which lacked visual judgment. This verdict is similar to Figure 1 in the introduction section. Without assistance in judging the pattern design standards, relying only on hearing, semantics and other methods may enable unfair competitors to steal resources through similar methods.

In case 2, the plaintiff also filed a lawsuit against the defendant on the grounds of the shape and color of the trademark. The verdict in this case indicated that on the inner circle pattern, the trademark owned by the plaintiff was "Sirens-mermaids", while the trademarks of the defendant were "mountain shape" and "Mt. RAINIER." The semantics of the two trademarks are also completely different, so that the final judgment is not considered to be similar trademarks. Based on the reasons for reporting, the system proposed in this article also first examines the features F_2 , F_3 , and F_5 . The calculated result of feature F_2 is less than σ_k , indicating that the two trademarks do have similar shapes visually. Feature F_5 also shows the texture, the similarity is greater than $2\sigma_k$. The difference from the previous case is the color scheme of feature F_3 . The F_3 feature distance calculated in the proposed system is between $2\sigma_k$ and σ_k . In this case and the previous case, the color scheme is the same as green and black, but because of the different area of the color scheme, the human visual perception has a different perception of the combination of F_2 and F_3 , which further recognizes the difference between the two.

In the past systems used to recognition objects, the corresponding literature will explain the use of specified methods to combine features, and then perform object

1
2
3
4
5
6
7
8
9
10
11
12
13
14
15
16
17
18
19
20
21
22
23
24
25
26
27
28
29
30
31
32
33
34
35
36
37
38
39
40
41
42
43
44
45
46
47
48
49
50
51
52
53
54
55
56
57
58
59
60
61
62
63
64
65

identification based on the combined results. This article considers the visual perception theory of trademark design and Gestalt psychology. In trademark design and visual perception theories, they describe that when human vision recognizes objects or images, unobvious features will be ignored, and other organizations' experience considers available features for identification [18]. Suppose, as in the cases of Table I [27], [15] case 1 and 2 combine the features through a specified method. Among the seven features, the F_4 feature is the most similar feature by mathematical calculation. However, in actual human vision, the F_4 feature of these cases is not considered as a reference feature compared to the other two cases. In addition, in the similarities raised by the plaintiff in the case, not all features were raised to have similarities. Therefore, in the biological and psychological process that is not yet fully understood [21], this article quantifies and lists the characteristics of trademark design that meet the observation of human visual perception, and provides quantitative data that simulates vision for design and legal decision-making reference.

Based on the visual perception theory of trademark design and Gestalt psychology, this article proposes seven features to assist judgment. Since these features are the defining elements of trademark design to attract human attention, the purpose of proposing features is to provide a basis for new trademarks or legal decisions when quantifying human visual perception through image processing, rather than making existing digital trademark search systems better. These features, which are combined with the design code search on the USPTO website, can help designers determine whether their new designs are similar to existing trademarks, and further prevent problems caused by misuse of others' trademarks. At the same time, in the face of counterfeit trademarks of unfair competitors, it can also give quantitative and visual judgments similar to human visual perception, helping national laws to protect the reputation of the original trademark owners.

Conclusion

As individuals, organizations, groups, and other representative signs, trademarks are common graphics in human society. The resources and profits brought by trademarks can maintain and develop the organization and further promote national progress. However, these resources have attracted the attention of unfair competitors. They faked similar trademarks and defrauded the confused consumers of the resources that the original trademark owners should obtain. These stolen resources may prevent the organization from maintaining or developing itself, so that the country cannot progress. In order to promote national progress, most countries enact trademark laws to protect organizations that own trademarks. Even though trademarks are protected by law, there are still many infringement cases. Apart from some latecomers who caused infringements because of their unfamiliarity, there were also malicious plagiarism by unfair competitors. Therefore, most of the research on trademarks is to search for similar features from a huge trademark database to check whether the trademark constitutes plagiarism for research purposes. These studies have had significant results on similar trademark inspections and classifications.

However, in recent years, unfair competitors have begun to produce similar trademarks through psychological means. Such similar trademarks not only confuse people with the original registered trademarks, but also avoid the legal judgment of

similar characteristics of the trademarks, making it difficult for law enforcement officers to judge whether they are plagiarism. Considering the influence of Gestalt psychology on trademark reputation, this article proposes a new seven-character visual judgment assistance system based on trademark design and Gestalt psychology. These features correspond to a part of the process that is not fully understood in the human visual system and quantify them. In the experiment, the trademark information used by the valve of this article to build the assistance system is Graphis public trademark database and USPTO database. During the verification test, we use the data in the USPTO database that is independent of the built-in valve value and the trademark images of past actual cases for testing. In the test results, the analysis of past cases shows that the system proposed in this article to assist in the judgment of visual perception is consistent to a certain extent with the reasons for the plaintiff's litigation. This shows that the assistance system proposed in this article can effectively provide visual-based trademark judgment results. Therefore, the system proposed in this article can assist the law to prevent malicious plagiarism on images by unfair competitors, and reduce the plagiarism caused by the similar design concepts of late trademark designers.

List of abbreviations

- ROI: Region of interest. ROI are samples within a data set identified for a particular purpose.
- TM: Abbreviation of trademark.
- USPTO: Trademark database of the United States Patent and Trademark Office. The database website of the registered trademark of the storage manufacturer in the United States.
- JPP: Trademark database of the Japan Platform for Patent. The database website of the registered trademark of the storage manufacturer in Japan.

Availability of data and materials

The trademark database is available online, the URL is as follows:

<https://www.graphis.com/logos/>
<https://www.uspto.gov/trademarks/>
<https://www.j-platpat.inpit.go.jp/>

Competing interests

The authors declare that they have no competing interests.

Funding

This research received no external funding.

Author's contributions

Conceptualization, K.M.H.; Methodology, K.M.H.; Investigation, K.M.H., L.M.C. and T.W.C.; Resources, L.M.C. and T.W.C.; Writing—Original Draft, K.M.H., L.M.C. and T.W.C.; Writing—Review & Editing, K.M.H.; Funding Acquisition, K.M.H.; Supervision, K.M.H.;

Acknowledgements

The authors would like to thank several anonymous reviewers and the editor for their comments and suggestions.

Author details

¹Department of Information Management, Kainan University, No.1 Kainan Rd., Luzhu Dist., 33857 Taoyuan, Taiwan (R.O.C.). ²Department of Electrical and Computer Engineering, Tamkang University, No.151, Yingzhuang Rd., Tamsui Dist., 25173 New Taipei, Taiwan (R.O.C.).

References

1. Garner, B.A.: Black's Law Dictionary (11th Ed.). West Group, ??? (2019)
2. Taiwan Intellectual Property Office: Review criteria: risk of confusion and misidentification. Taiwan Intellectual Property Office (2017). <https://www.tipo.gov.tw/public/Attachment/690b8217-d7da-48f5-9187-a7b9284cdbc0.pdf>
3. Richardson, G.: Brand names before the industrial revolution. Working Paper 13930, National Bureau of Economic Research (April 2008). doi:10.3386/w13930. <http://www.nber.org/papers/w13930>
4. Callmann, R.: The Law of Unfair Competition, Trademarks and Monopolies (4th Ed.). Callaghan, ??? (1998)
5. Nguyen, T.D., Nguyen, H.H.H., Le, T.H.: Trademark image retrieval based on scale, rotation, translation invariant features. In: The 2013 RIVF International Conference on Computing Communication Technologies - Research, Innovation, and Vision for Future (RIVF), pp. 282–285 (2013). doi:10.1109/RIVF.2013.6719908

6. Agrawal, D., Jalal, A., Tripathi, R.: Trademark image retrieval by integrating shape with texture feature. In: Proceedings of the 2013 International Conference on Information Systems and Computer Networks, ISCON 2013, pp. 30–33 (2013). doi:10.1109/ICISCON.2013.6524168
7. Joshi, K.D., Bhavsar, S.N., Sanghvi, R.C.: Image retrieval system using intuitive descriptors. *Procedia Technology* **14**, 535–542 (2014). doi:10.1016/j.protcy.2014.08.068
8. Meenalochini, M., Saranya, K., Rajkumar, G.V., Mahto, A.: Perceptual hashing for content based image retrieval. In: 2018 3rd International Conference on Communication and Electronics Systems (ICES), pp. 235–238 (2018). doi:10.1109/CESYS.2018.8723888
9. Showkatramani, G., Khatri, N., Landicho, A., Layog, D.: Deep learning approach to trademark international class identification. In: 2019 18th IEEE International Conference On Machine Learning And Applications (ICMLA), pp. 608–612 (2019). doi:10.1109/ICMLA.2019.00112
10. Anuar, F.M., Setchi, R., Lai, Y.-K.: A conceptual model of trademark retrieval based on conceptual similarity. *Procedia Computer Science* **22**, 450–459 (2013). doi:10.1016/j.procs.2013.09.123
11. Anuar, F.M., Setchi, R., Lai, Y.: Semantic retrieval of trademarks based on conceptual similarity. *IEEE Transactions on Systems, Man, and Cybernetics: Systems* **46**(2), 220–233 (2016). doi:10.1109/TSMC.2015.2421878
12. Habibollahi Najaf Abadi, H., Pecht, M.: Artificial intelligence trends based on the patents granted by the united states patent and trademark office. *IEEE Access* **8**, 81633–81643 (2020). doi:10.1109/ACCESS.2020.2988815
13. Wu, Y.: Cheated! This shop is not the FamilyMart, Customers almost ran in to buy drinks. written by Traditional Chinese (2016). <http://bepo.ctitv.com.tw/2016/09/128615/>
14. Chen, Q.J., Xu, Y.X.: Appearance similarity is as high as 90%, pet shop involved plagiarism PX Mart. written by Traditional Chinese (2019). <https://news.tvbs.com.tw/local/1169189>
15. Kim, T.: Starbucks, A fierce battle to defend the logo (2019). <https://www.darts-ip.com/starbucks-logo-battle/>
16. Bradley, S.: Design Principles: Visual Weight And Direction (2014). <https://www.smashingmagazine.com/2014/12/design-principles-visual-weight-direction/>
17. Bradley, S.: Design Fundamentals - Elements, Attributes, & Principles. Vaseo Design, Boulder, Colorado (2018)
18. Koffka, K.: Principles of Gestalt Psychology. Mimesis International, ??? (2014)
19. Bradley, D., Roth, G.: Adaptive thresholding using the integral image. *Journal of Graphics Tools* **12**(2), 13–21 (2007)
20. Eagleman, D.: Visual illusions and neurobiology. *Nat Rev Neurosci* **2**, 920–926 (2001)
21. Gonzalez, R.C., Wood, R.E.: Digital Image Processing, (4rd Ed.). Pearson Education, ??? (2009)
22. Pedersen, B.M.: Logo Database - Graphis. Graphis Inc. (1986). <http://www.graphis.com/logos/>
23. Japan Platform for Patent Information — J-PlatPat (JPP). <https://www.j-platpat.inpit.go.jp/>
24. USPTO United States Patent and Trademark Office. <https://www.uspto.gov/>
25. 7-Eleven Wins Trademark Infringement Suit vs. Super-7 Store. Convenience Store News (2015). <https://csnews.com/7-eleven-wins-trademark-infringement-suit-vs-super-7-store>
26. Li, Z.W.: Learned the lesson of being defeated to "Hodilao" in the lawsuit, Haidilao registered 200 trademarks in 2 days. udn.com. written by Traditional Chinese (2020). https://udn.com/news/story/7332/4991502?from=udn-ch1_breaknews-1-0-news
27. Li, Y., Peng, G.: Trademark battle! Starbucks defeated in lawsuit against e-coffee. TVBS News. written by Traditional Chinese (2007). <http://www.graphis.com/logos/>







·ZEXEL·

pb



ZUC



zP



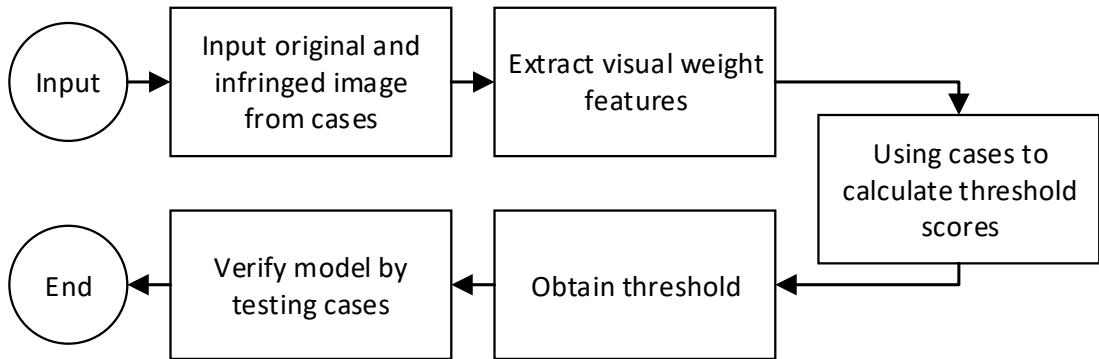
z

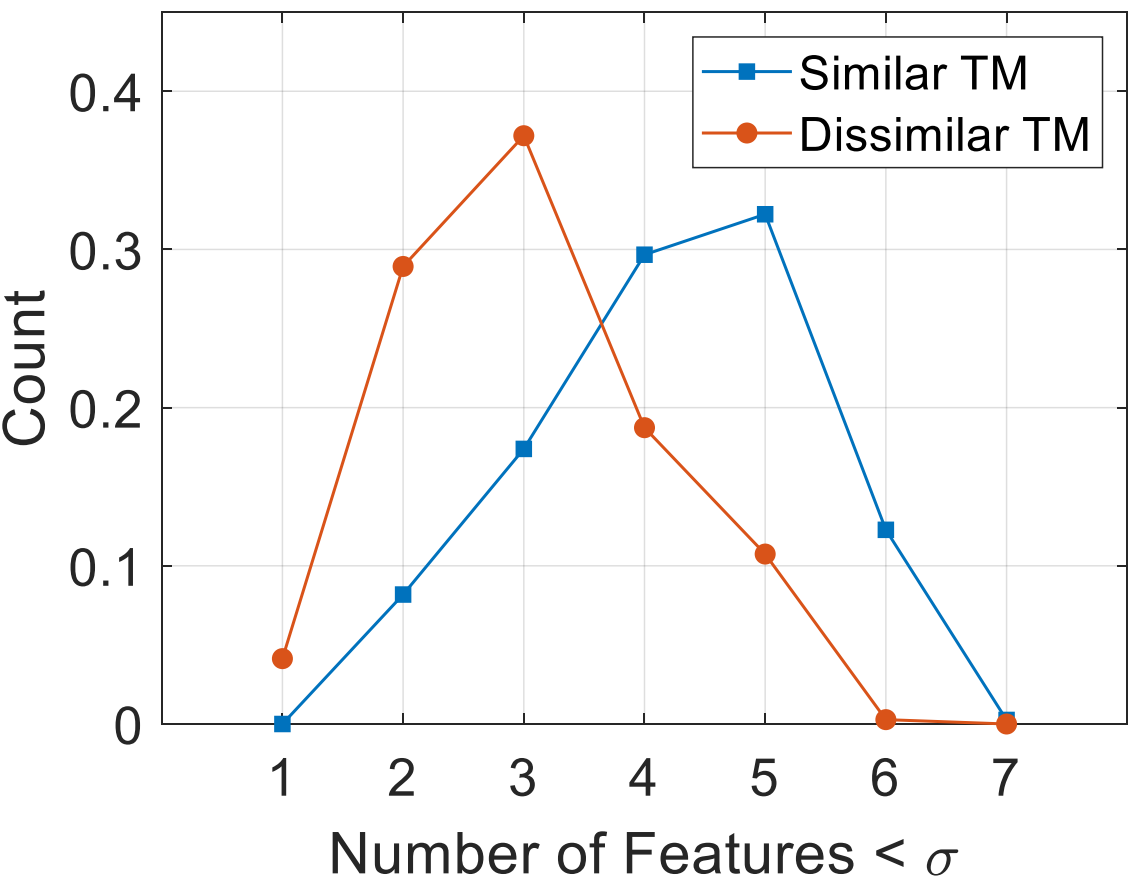
zuma

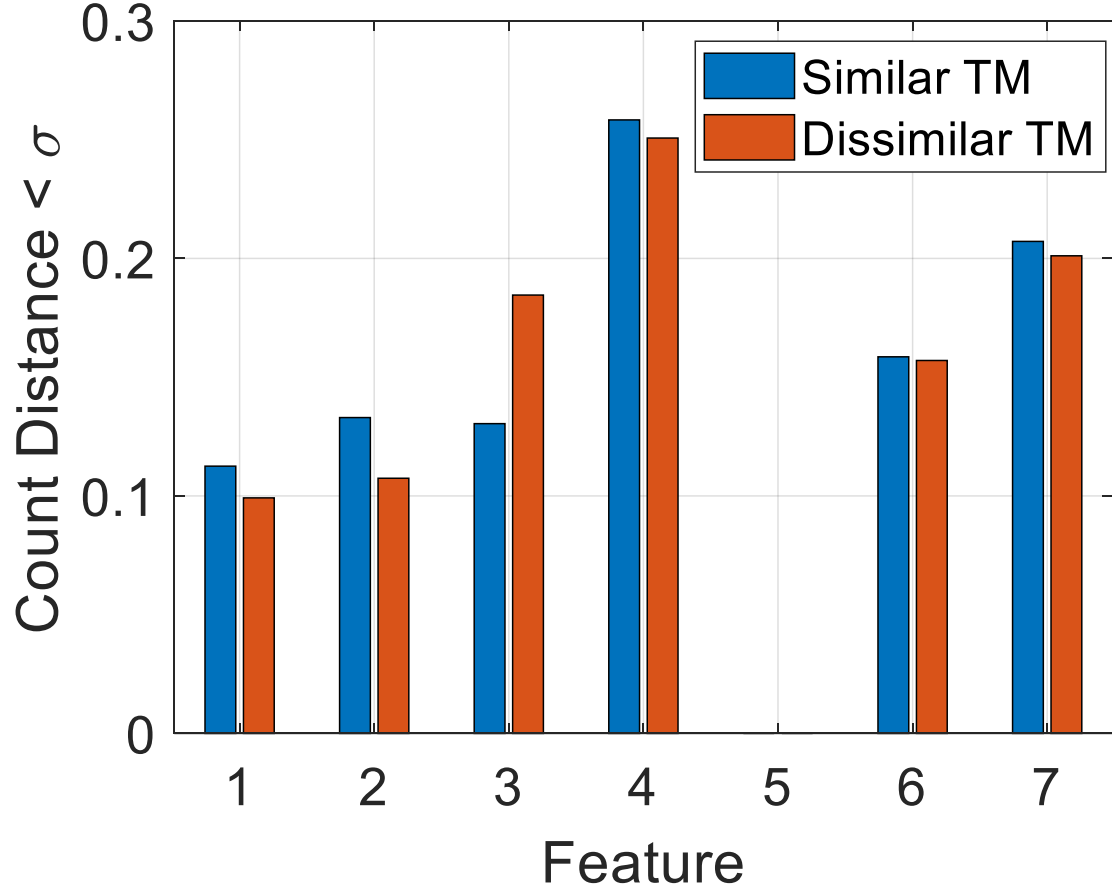


Zuntz









Figures

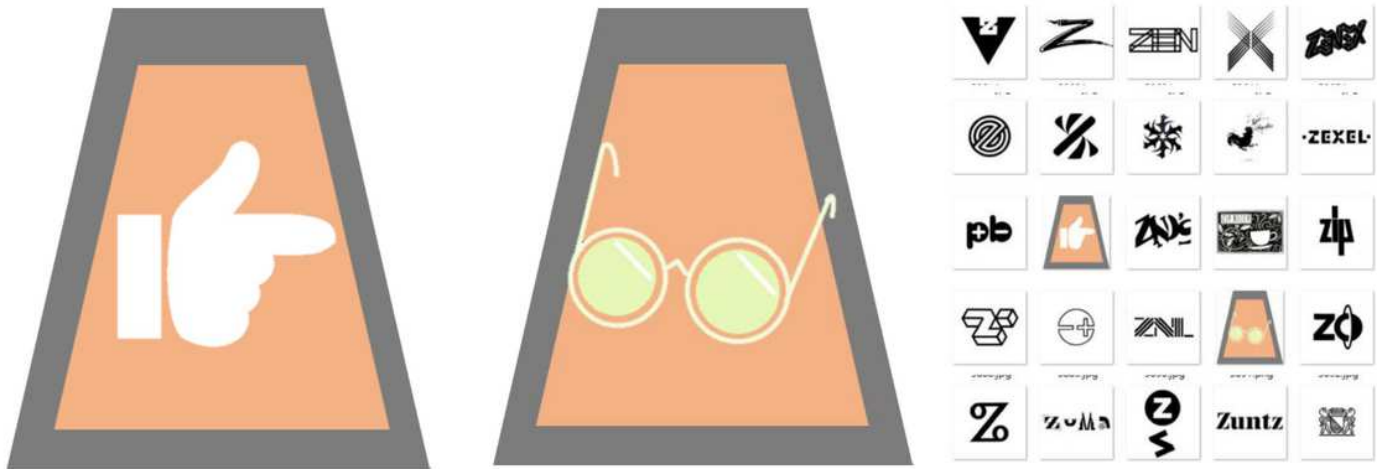


Figure 1

Illustrate a hypothetical trademark case that uses visual psychology to confuse human vision. (a) Hypothetical well-known trademark; (b) Hypothetical counterfeit trademark; (c) Examples of possible confusion in environmental impact;

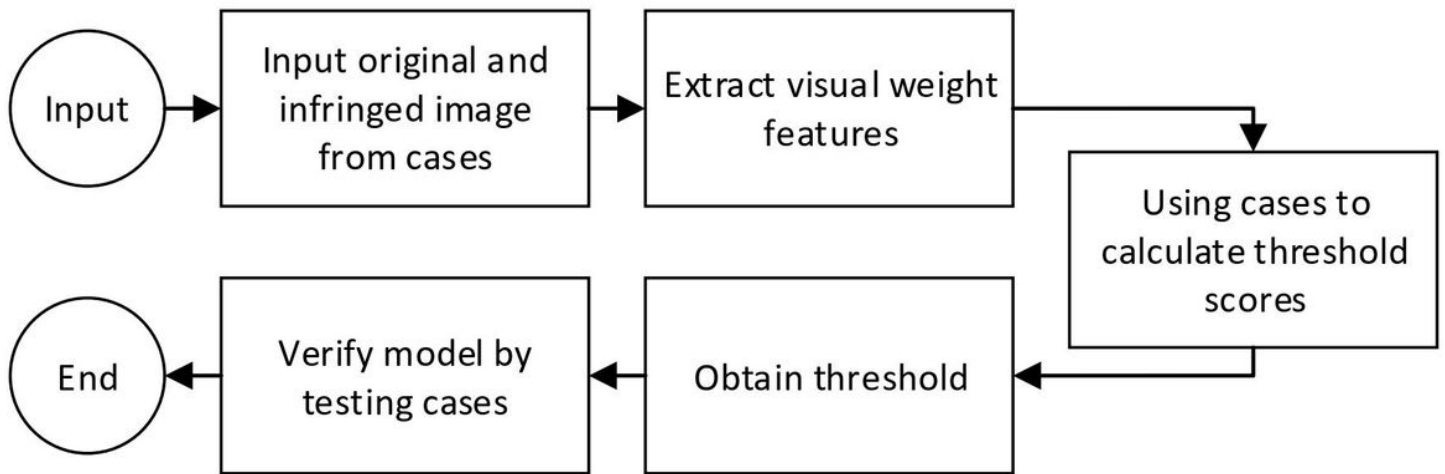


Figure 2

Proposed the implementation flow chart of proposed trademark similarity comparison system

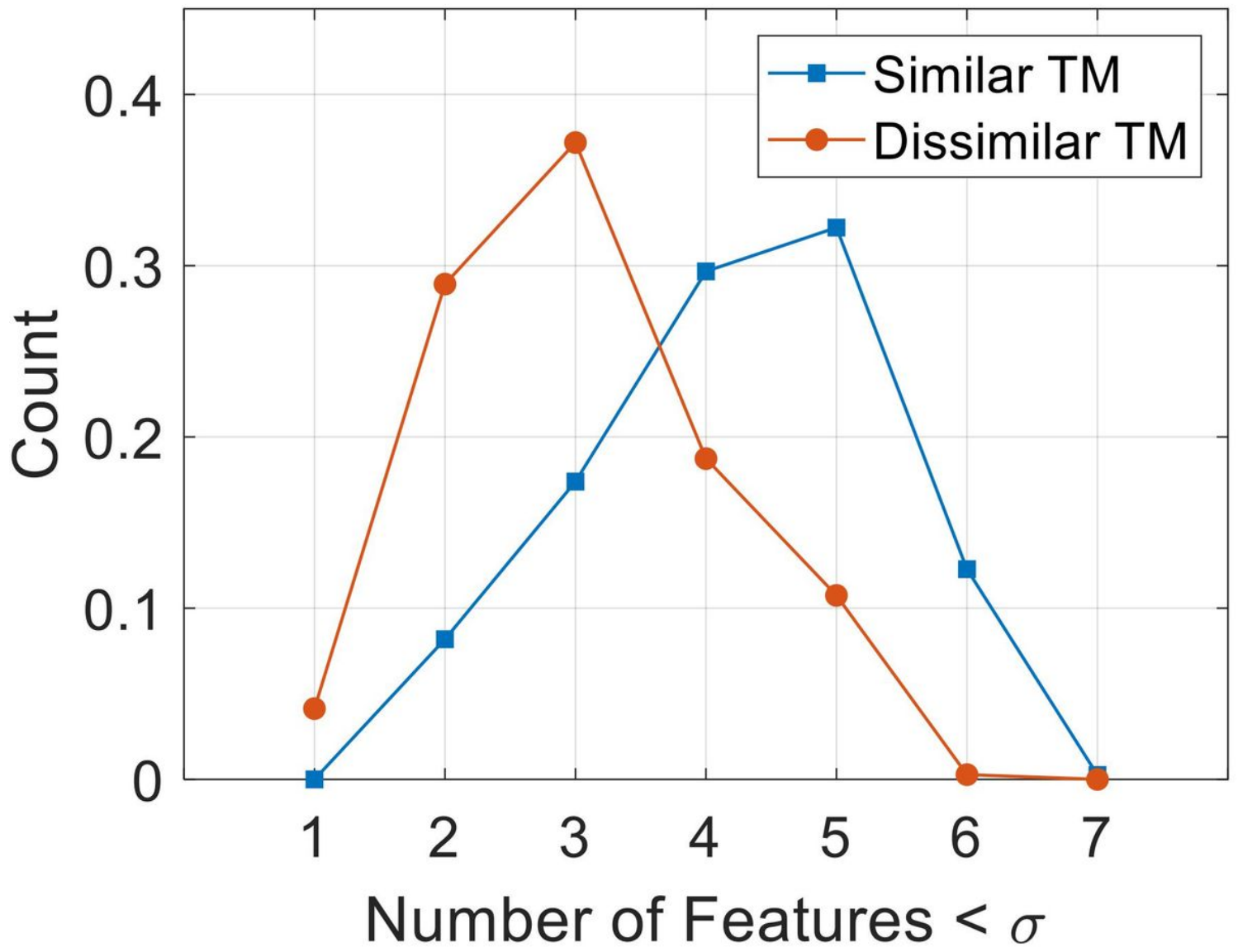


Figure 3

Statistics of the number of features whose distance is less than the standard deviation

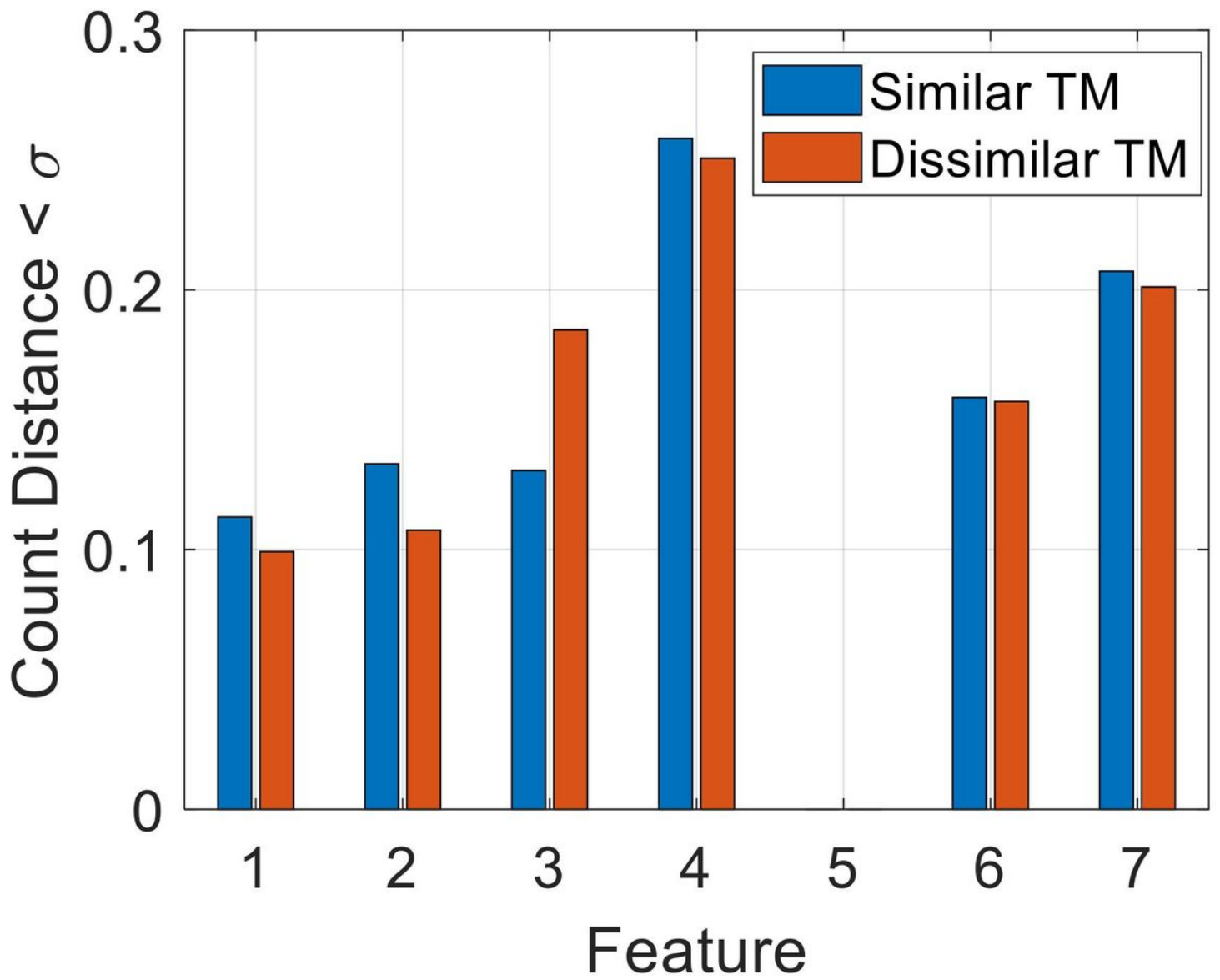


Figure 4

Statistics where the distance of each feature is less than the standard deviation