

Figure S1. Distribution of peptide length in leaf (a) and root (b) of *B. vulgaris*. The x axis represents the length of the peptides, and the y axis represents the number of proteins.

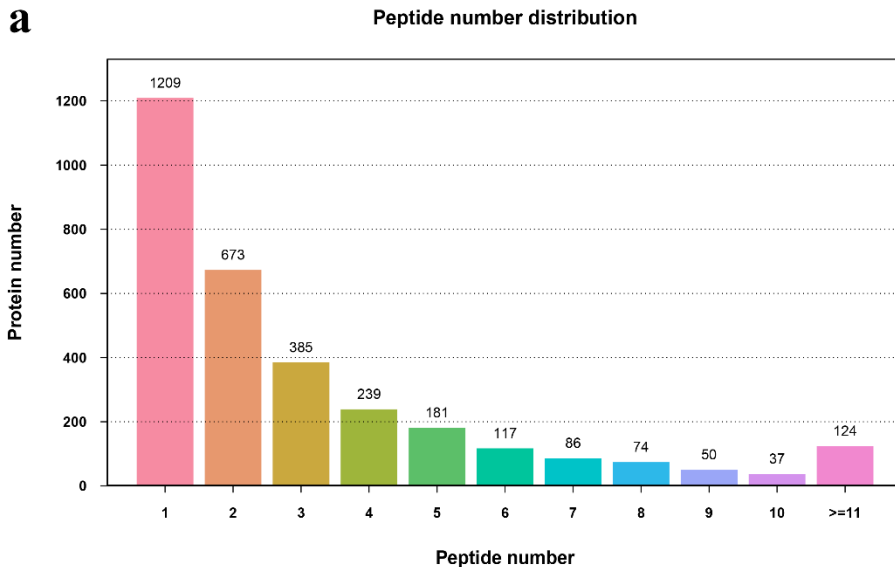
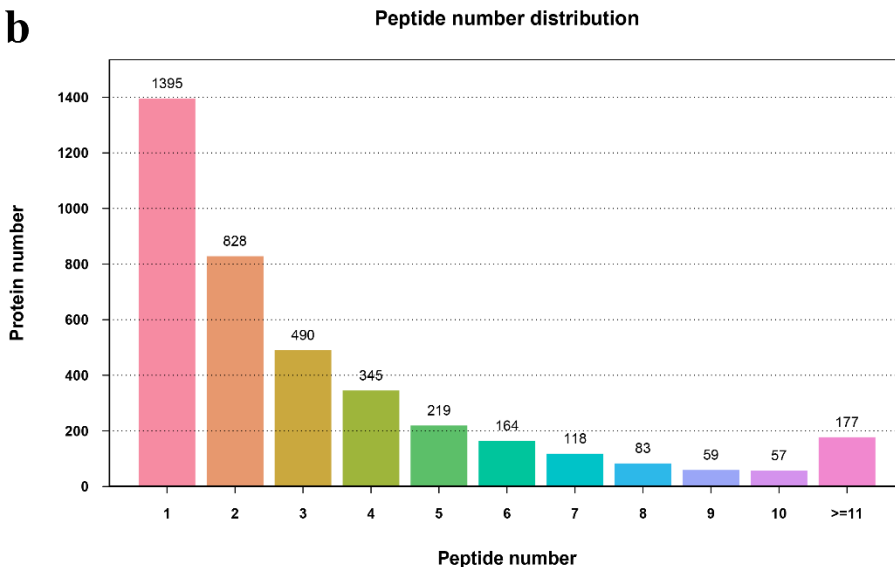
a**b**

Figure S2. Distribution of peptide number in leaf (a) and root (b) of *B. vulgaris*. The x axis represents the scope of the number of identified peptides, and the y axis represents the number of proteins.

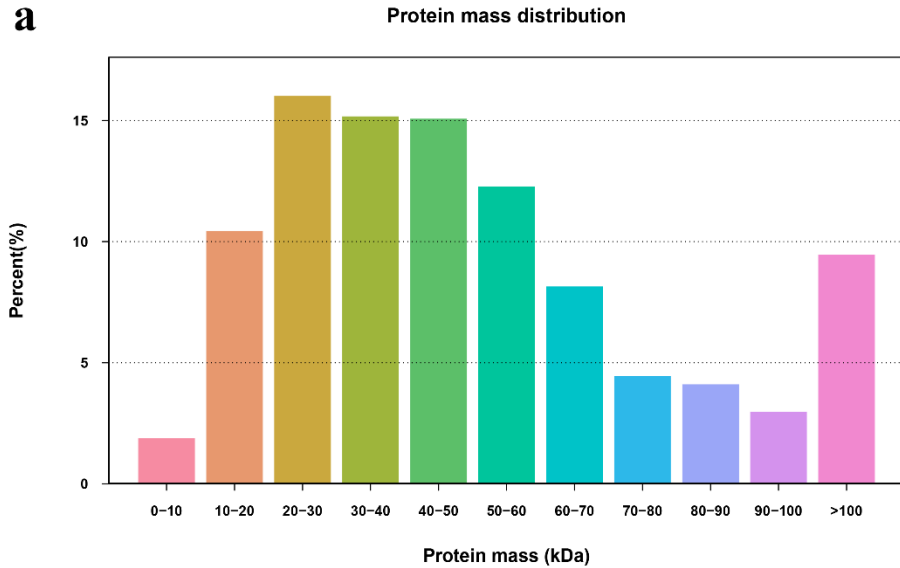
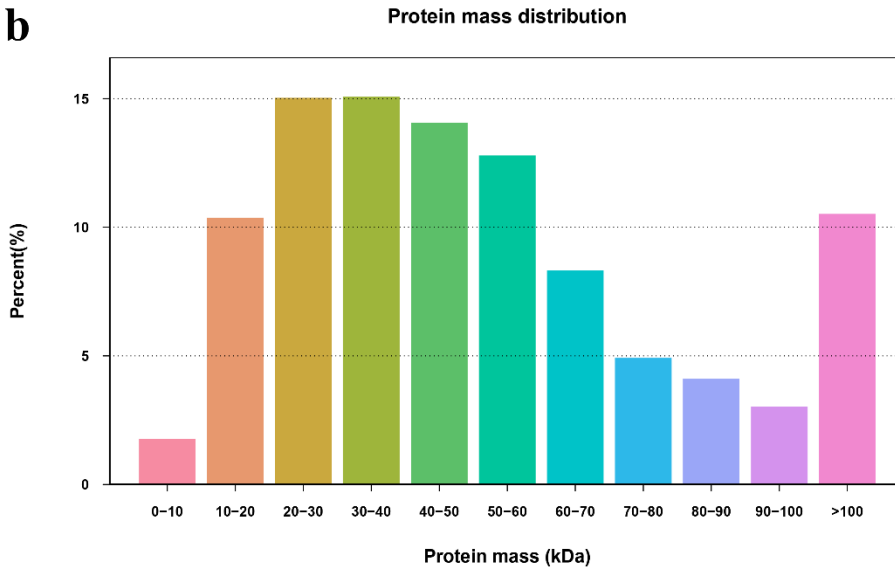
a**b**

Figure S3. Distribution of protein mass in leaf (a) and root (b) of *B. vulgaris*. The *x* axis represents the molecular weights (kDa) of the identified proteins, and the *y* axis represents the number of proteins.

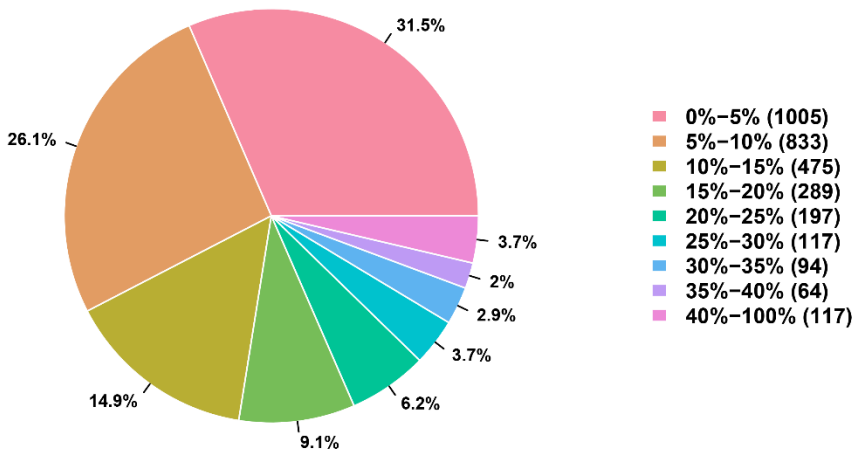
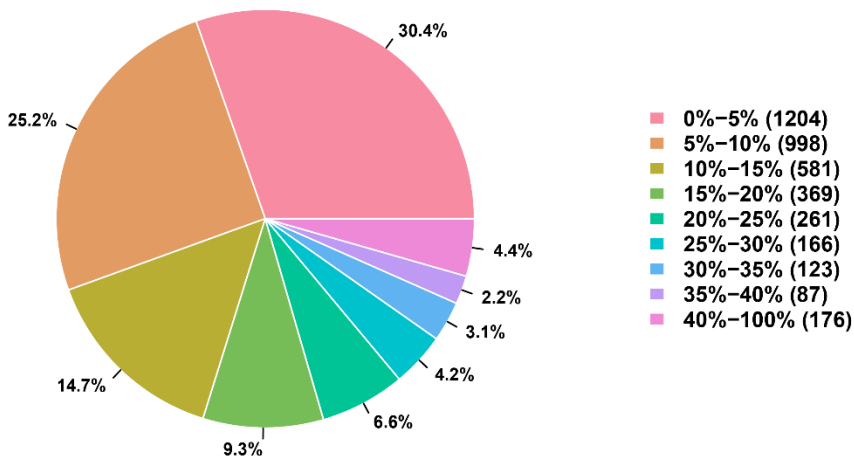
a**Protein coverage distribution****b****Protein coverage distribution**

Figure S4. Distribution of protein coverage in leaf (a) and root (b) of *B. vulgaris*. The pie chart displays the proportion of the number of the different proteins within the scope of coverage in the total protein amount.