

Photo

(a)



(b)



(c)



(d)



(e)



(f)



(g)



(h)



Photo 1. Cylindrical frame infiltration test

Note: (a) Cylindrical frame container used for the test, (b) Inserting the container into the volcanic ejecta, (c) State of the survey area in the outer forest plain, (d) Expansion of the volcanic ejecta in the outer forest plain, (e) State of the survey

area in the forest plain, (f) Expansion of the volcanic ejecta in the forest plain, (g) State of the investigation site in the forest talus, (h) Expansion of the volcanic ejecta in the forest talus

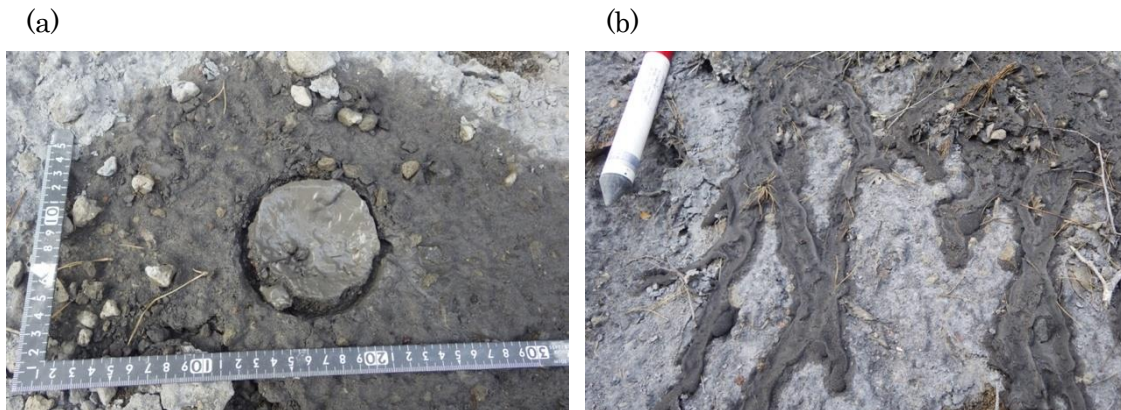


Photo 2. Surface of volcanic ejecta on the forest talus

Note: (a) State after water injection with a cylindrical frame infiltration test, (b) State after water spray on the forest talus