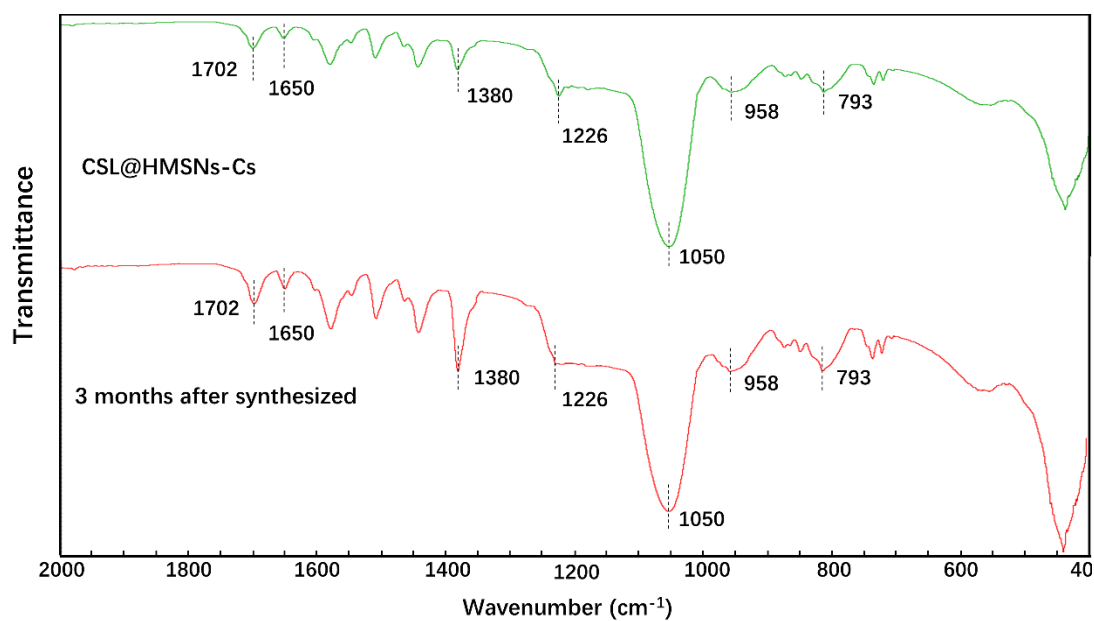
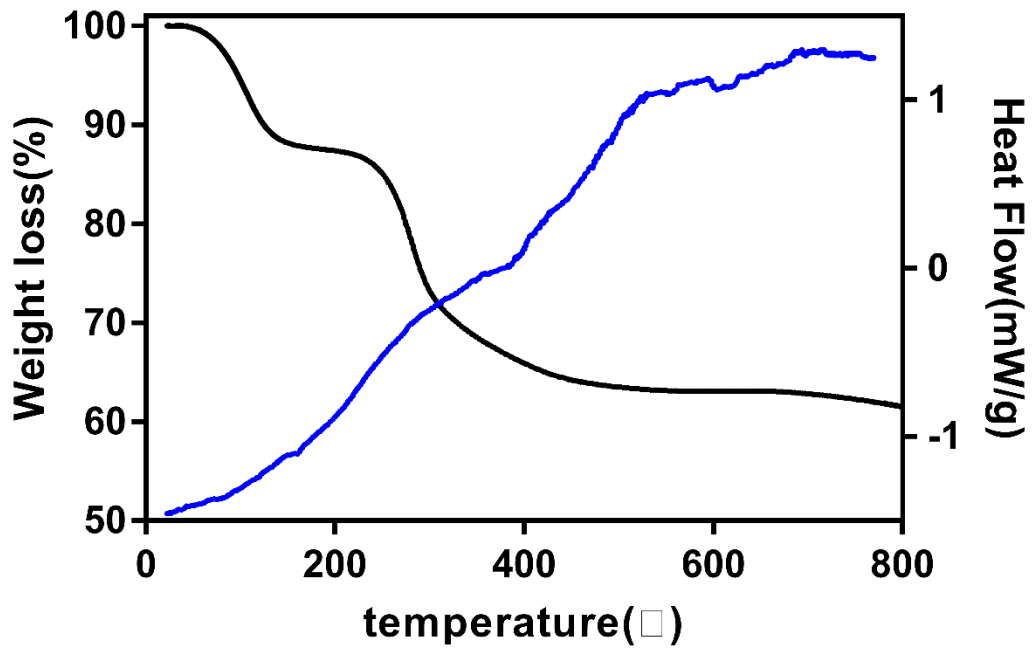


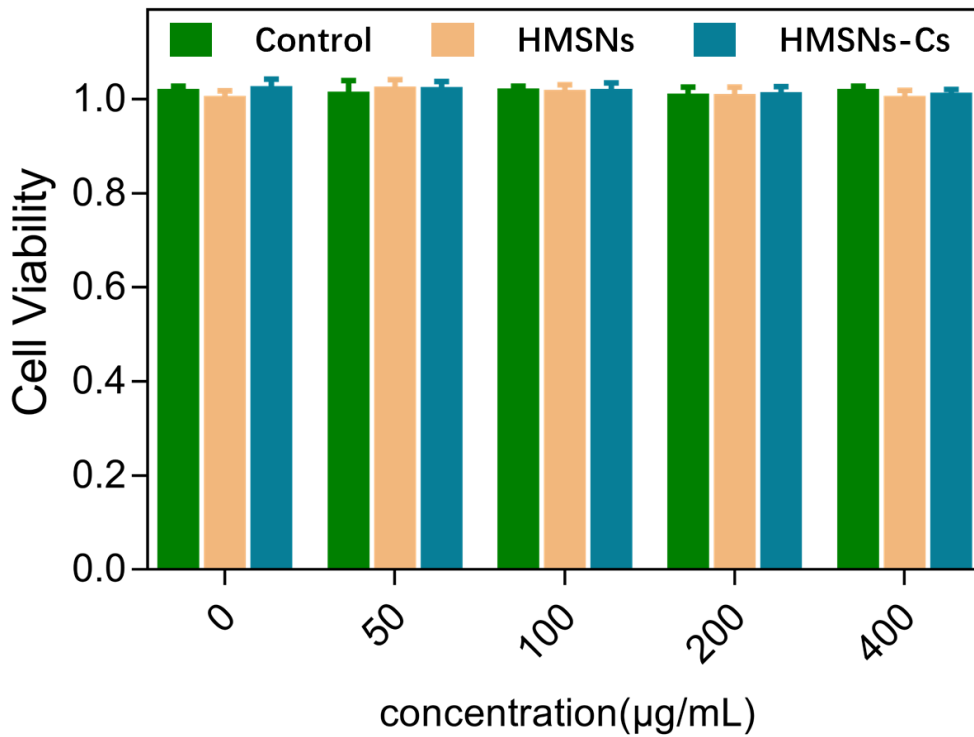
S1. Standard curves of CSL/EtOH solution. $y = 0.006846x + 0.005094$, $R^2 = 0.999896$



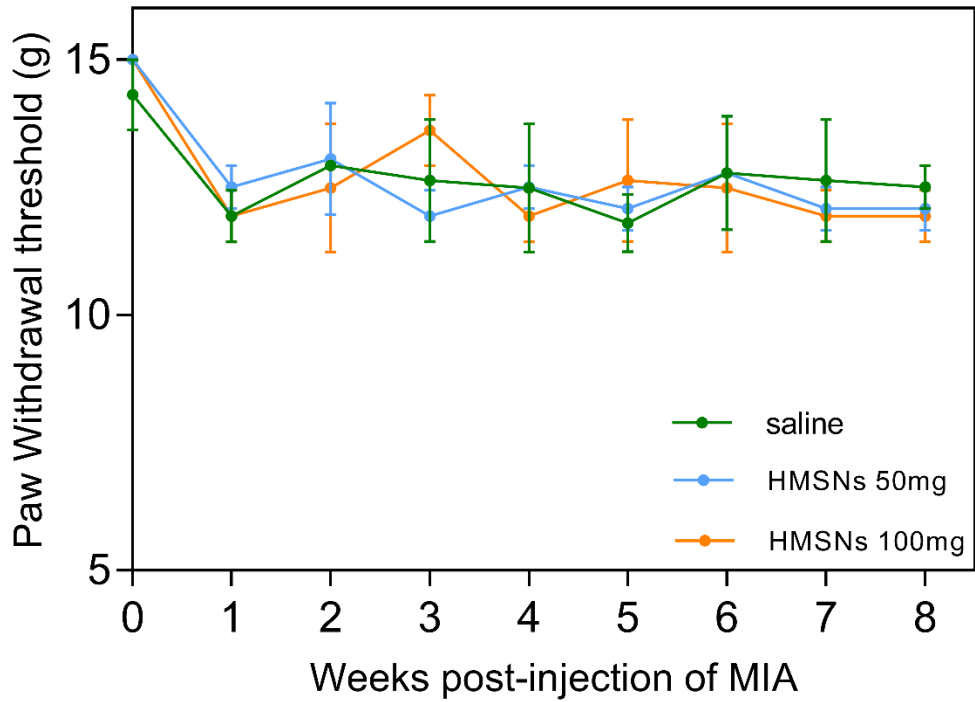
S2. Time stability of CHC, tested with Fourier transform infrared (FT-IR) spectra 3 months after the nanocomplex was synthesized.



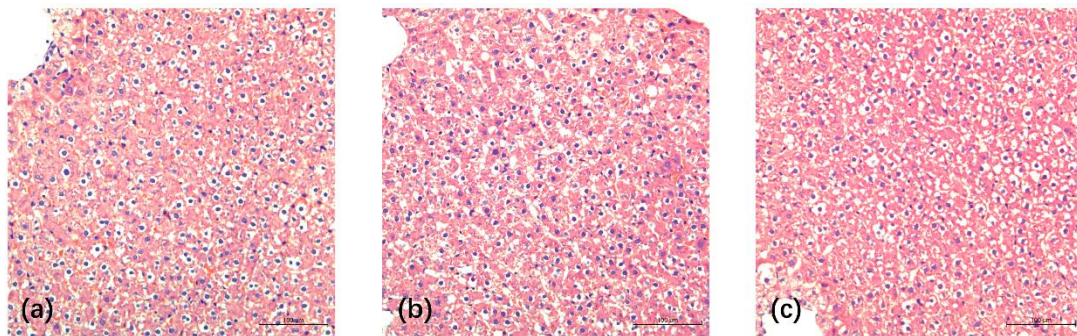
S3. Thermogravimetric Analysis (TGA, black curve) and differential scanning calorimetry (DSC, blue curve).



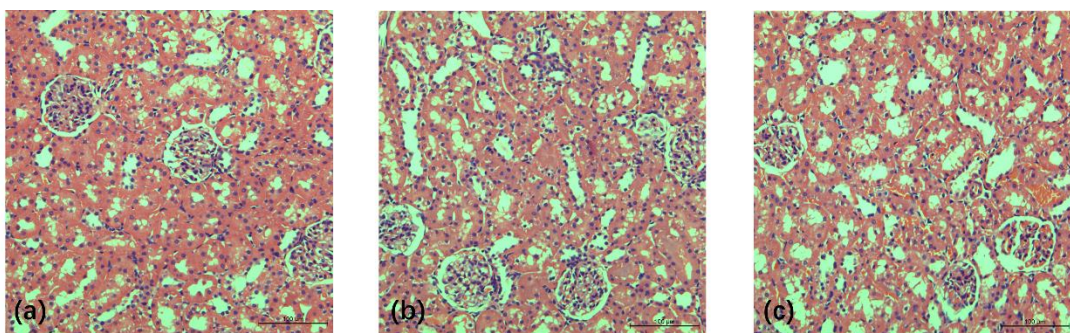
S4. Cytotoxicity assay of different concentration (0, 50, 100, 200, 400 µg/mL) after 3 h. There was no significance among each groups. (n=3, p > 0.05)



S5. Paw withdrawal threshold(PWT) of rats treated with saline, 50 mg HMSNs, 100 mg HMSNs, total volume 50 μ L. There was no significance among each groups. (n=3, $p > 0.05$)

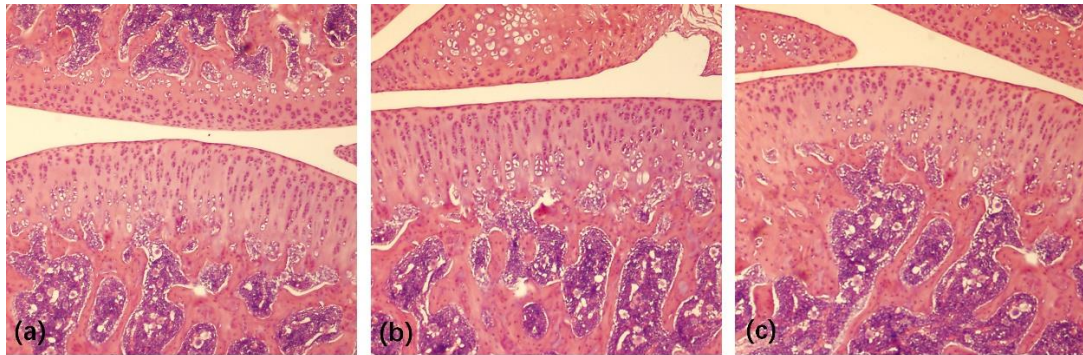


S6. Haematoxylin and eosin (H&E) stained images of hepatic tissue 8 weeks after administration of saline, 50 mg HMSNs, 100 mg HMSNs. There was no significance among each groups.



S7. Haematoxylin and eosin (H&E) stained images of nephridial tissue 8 weeks after administration

of saline, 50 mg HMSNs, 100 mg HMSNs. There was no significance among each groups.



S8. Haematoxylin and eosin (H&E) stained images of knee joint 8 weeks after administration of saline, 50 mg HMSNs, 100 mg HMSNs. There was no significance among each groups.