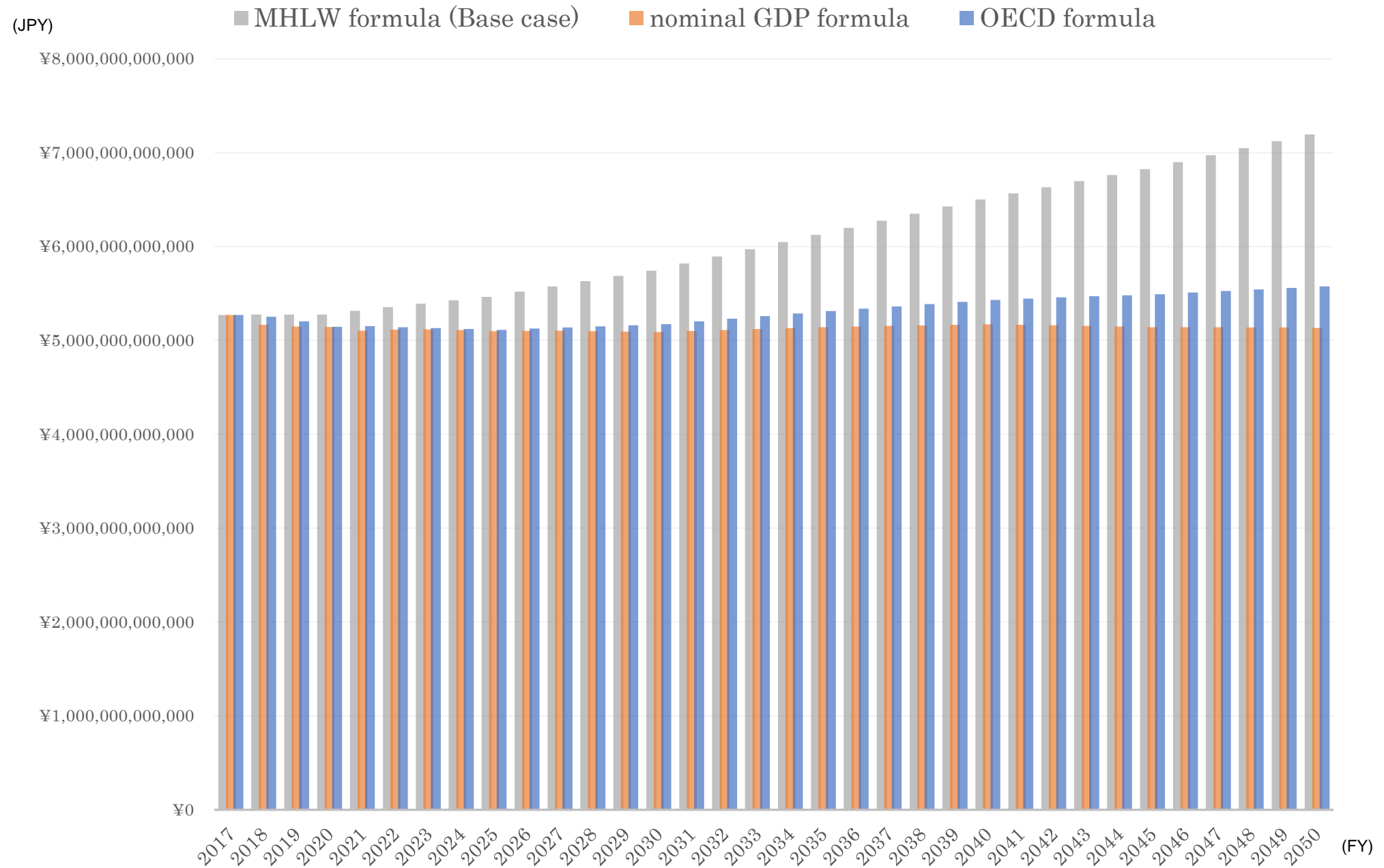
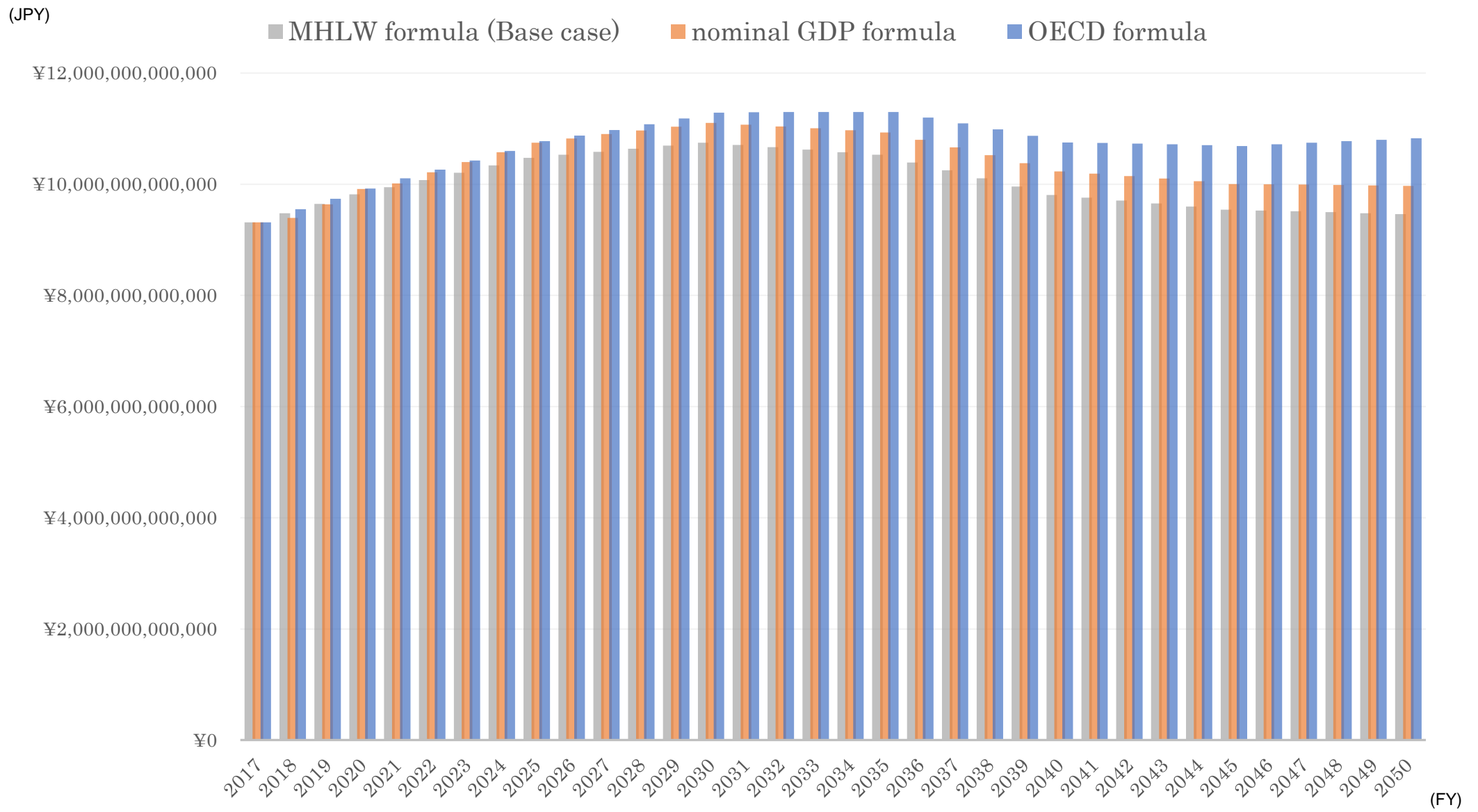


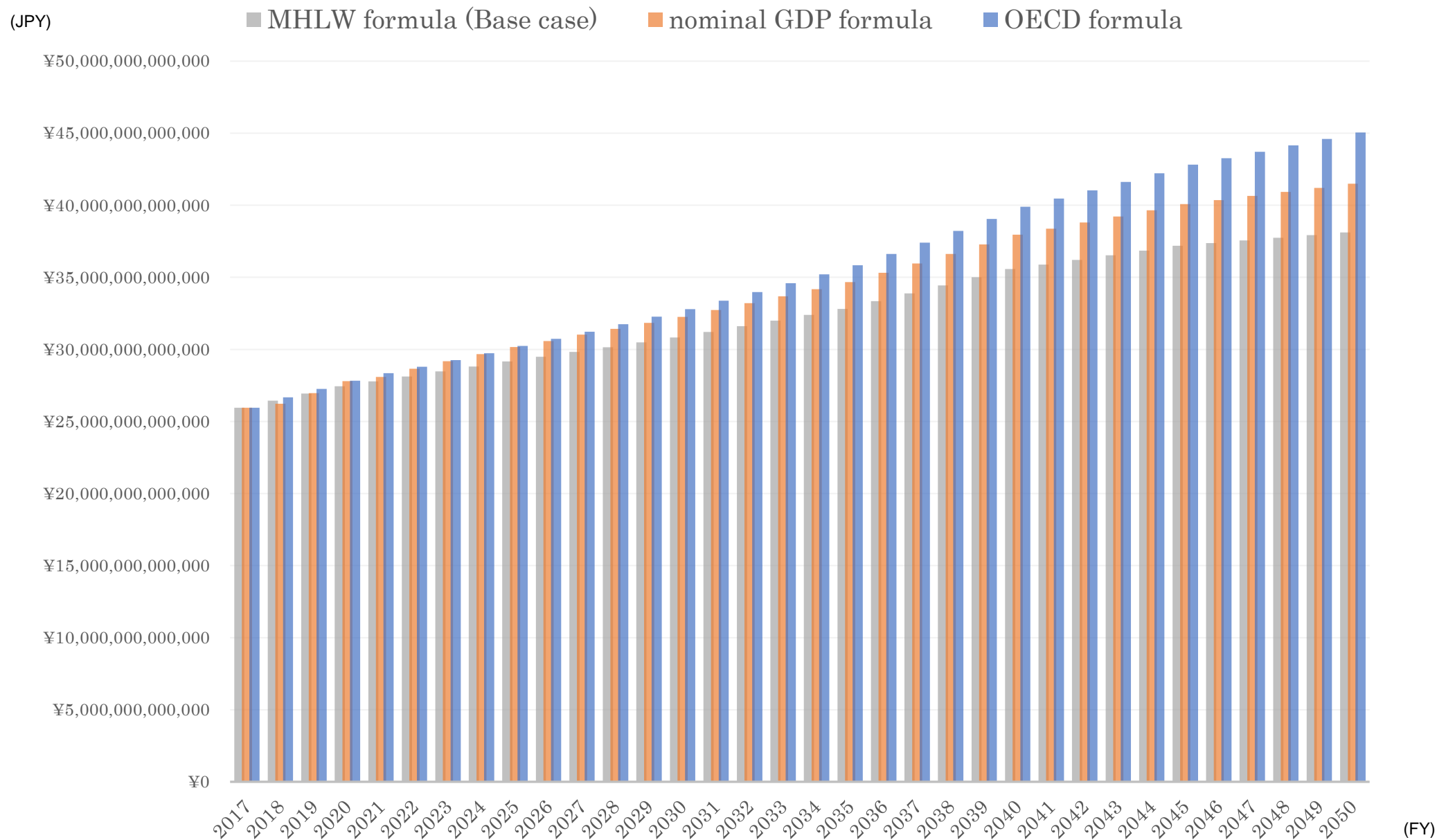
Additional file 4(a). Trend of annual total medical care expenditure in each age group (age 0 to 14)



Additional file 4(b). Trend of annual total medical care expenditure in each age group (age 15 to 44)



Additional file 4(c). Trend of annual total medical care expenditure in each age group (age 45 to 64)



Additional file 4(d). Trend of annual total medical care expenditure in each age group (age ≥ 65)