

Supplementary Data

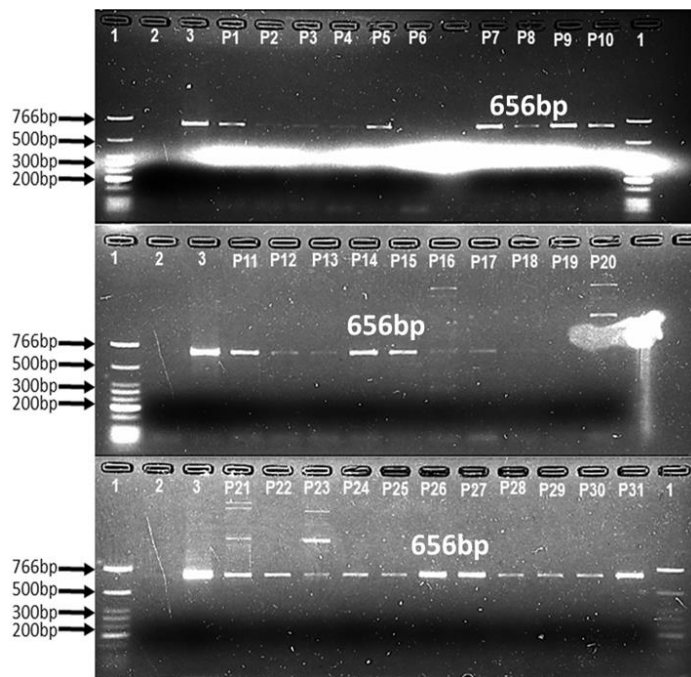


Figure 1: Gel electrophoresis of PCR amplified *D. immitis* 656bp COI mtDNA gene confirming the infection status of *A. aegypti*. Lanes 1; Low molecular weight DNA ladder, 2; negative control, 3; positive control and infected lanes represented by positive bands that corresponds to the 656pb size.

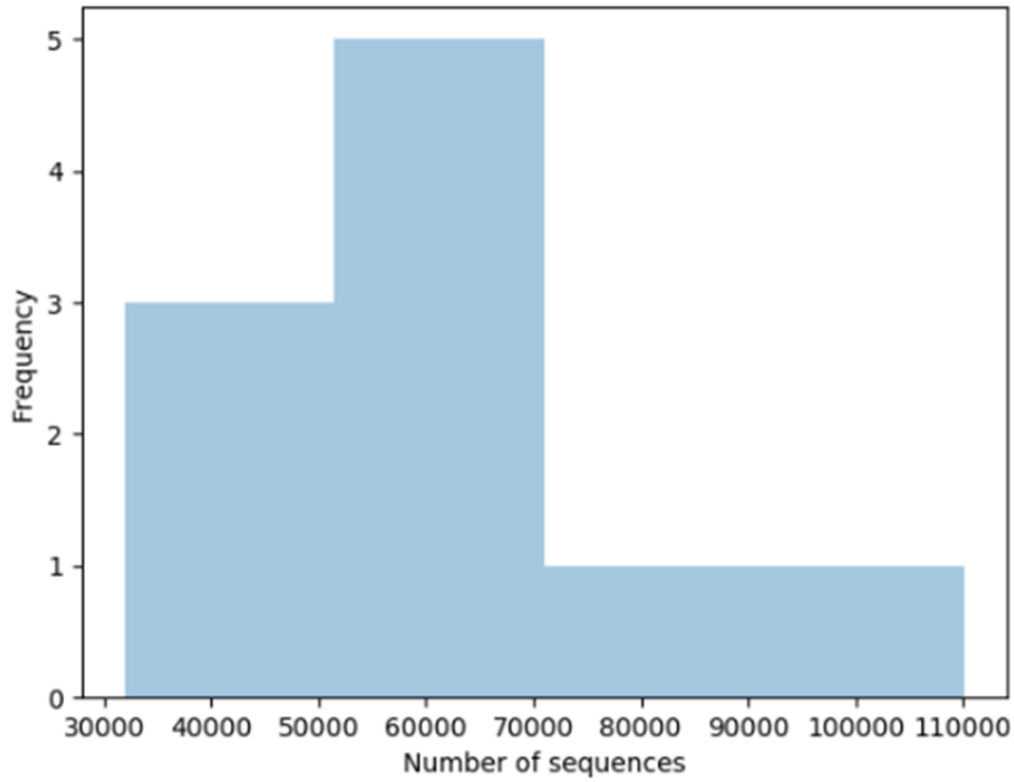


Figure 2: Summary of sequence reads following demultiplexing. The chart represents the distribution of reads ranging from the minimum (31861) to maximum (110235). A total of 602502 reads were generated.

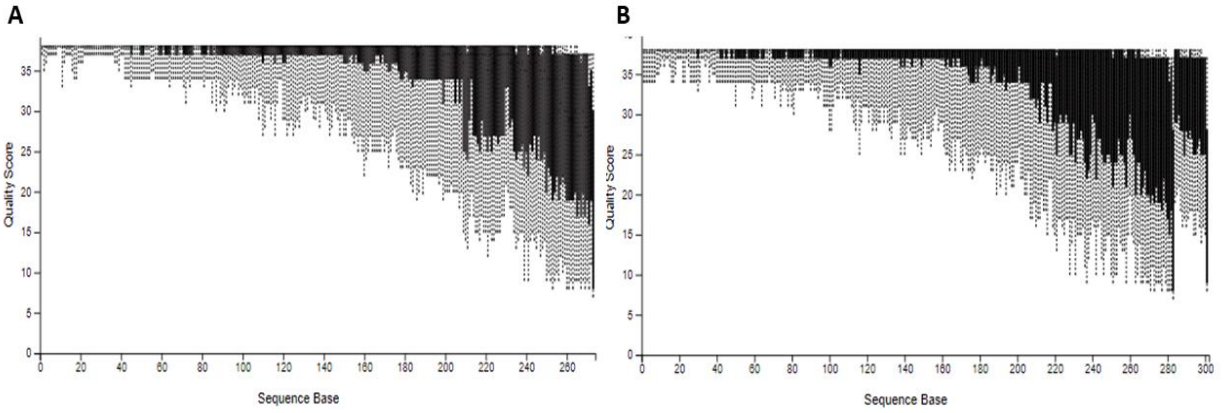


Figure 3: Interactive quality plots of A), forward and B), reverse reads. These plots were used to deduce the sequence with reduced qualities which were eventually truncated and trimmed using the DADA2 pipeline of qiime2. The plots were generated using a random sampling of 10000 out of 602502 sequences without replacement. The minimum sequence length identified during subsampling was 59 bases for the forward reads and 87 bases for reverse reads.

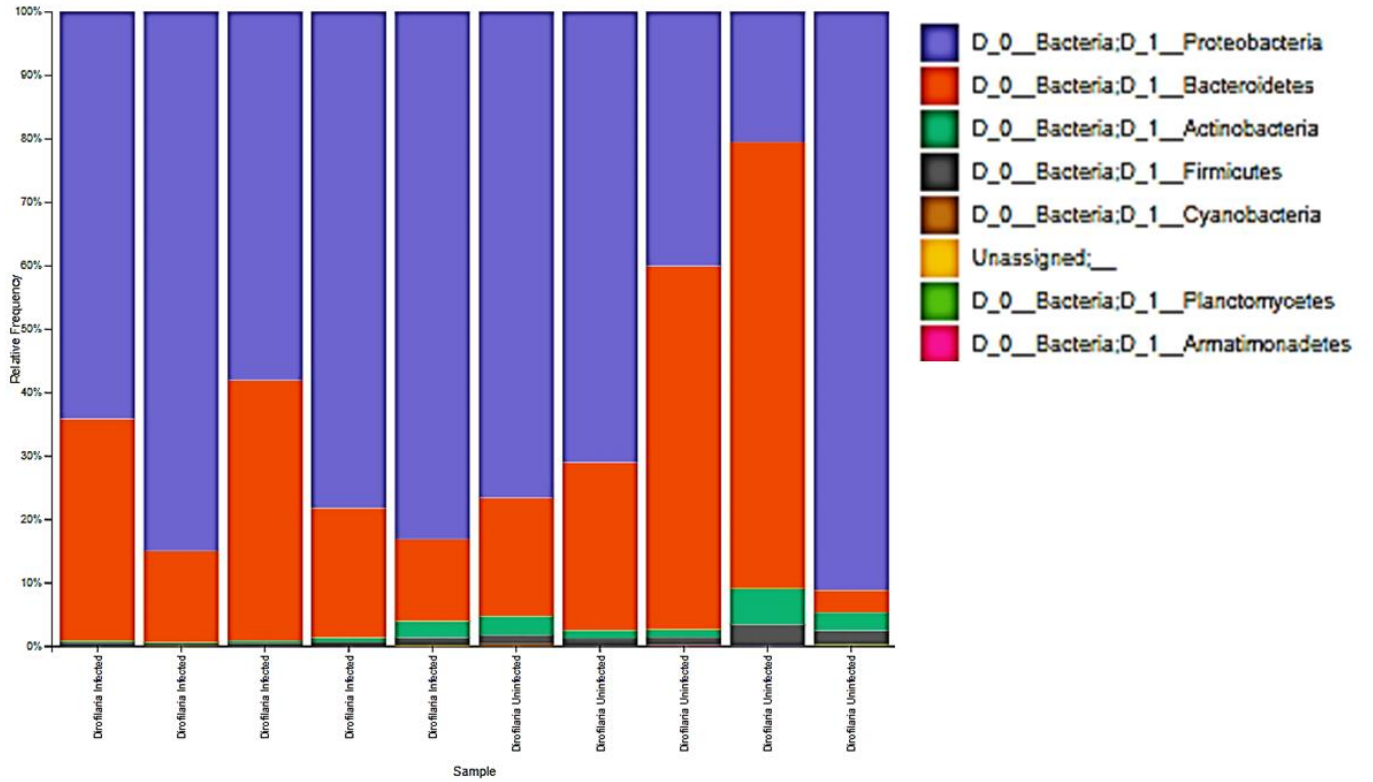


Figure 4: Overall taxonomic abundance at Phylum level distribution in individual mosquito groups. Phylum Proteobacteria and Bacteroidetes were seen to be most dominant taxa.

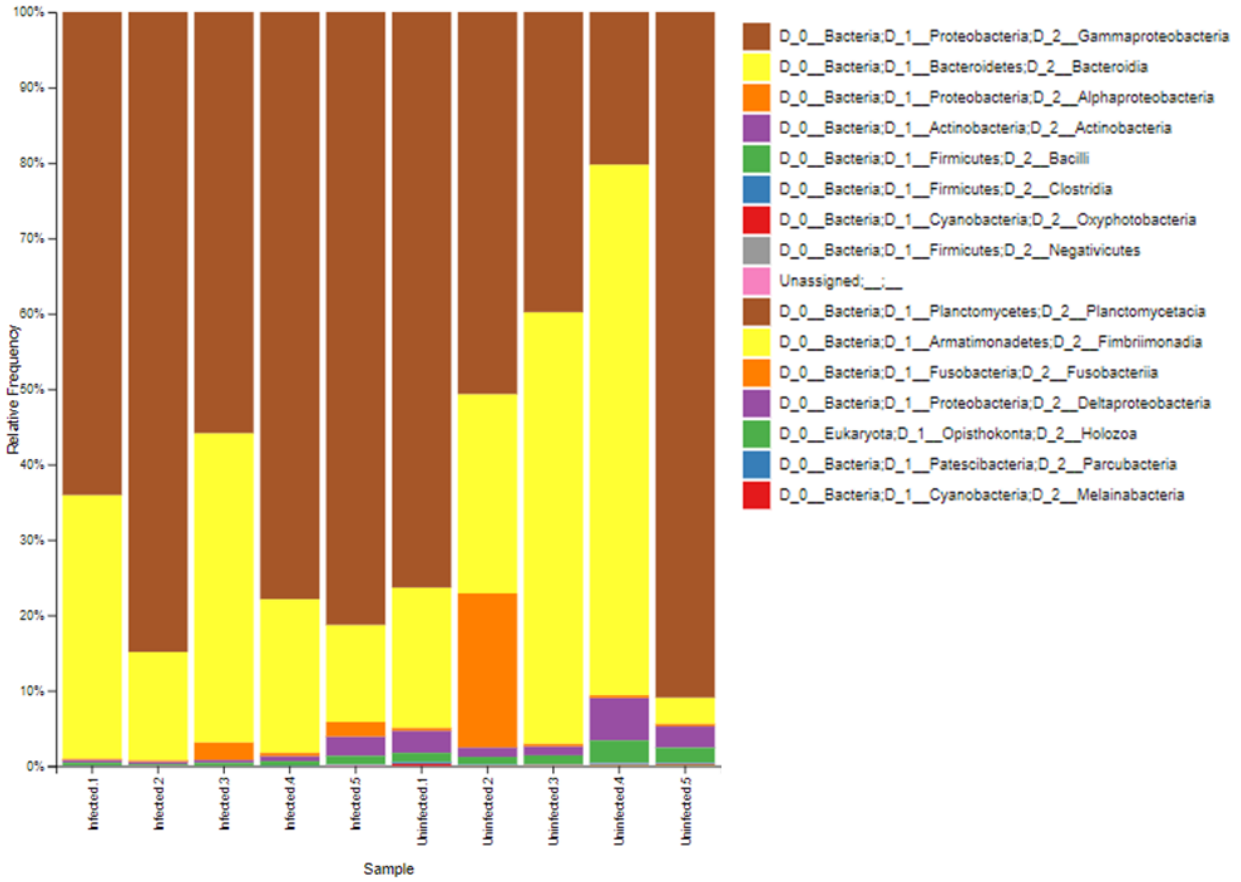


Figure 5: Overall taxonomic abundance at class level distribution in individual mosquito groups. Phylum Proteobacteria and Bacteroidetes were seen to be most dominant taxa.

LIST OF TABLES

Table 1: Hierarchical distribution and abundance of detected operational taxonomic units with their corresponding classification from kingdom to species level where possible.



OTU table.tsv

Table 2: Pairwise comparison of alpha diversity by Kruskal-Wallis test

	Group 1	Group 2	H	p-value	q-value
Faith PD	Dirofilaria Infected	Dirofilaria Uninfected	0.098182	0.754023	0.754023
Observed OTUs			1.32	0.250592	0.250592

Table 3: Order level taxonomic distribution



Order level
taxonomy.csv

Table 4: Family level taxonomic distribution



Family level
taxonomy.csv

Table 5: Genus level taxonomic distribution



Genus level
taxonomy.csv

Table 6: Species level taxonomic distribution



Specie level
taxonomy.csv

