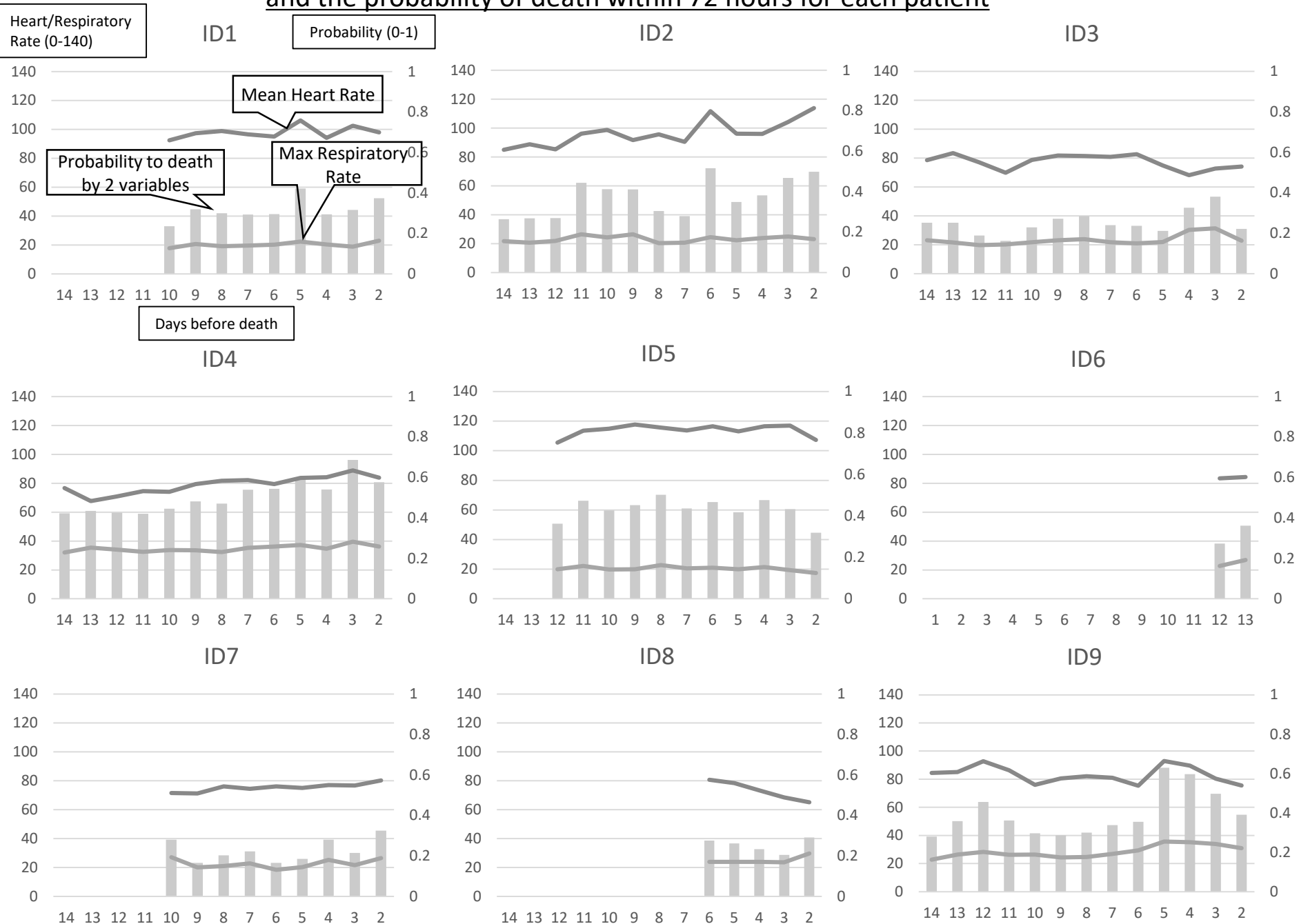


Appendix: changes in heart/respiratory rates for 14 days prior to death and the probability of death within 72 hours for each patient



Appendix: changes in heart/respiratory rates for 14 days prior to death and the probability of death within 72 hours for each patient

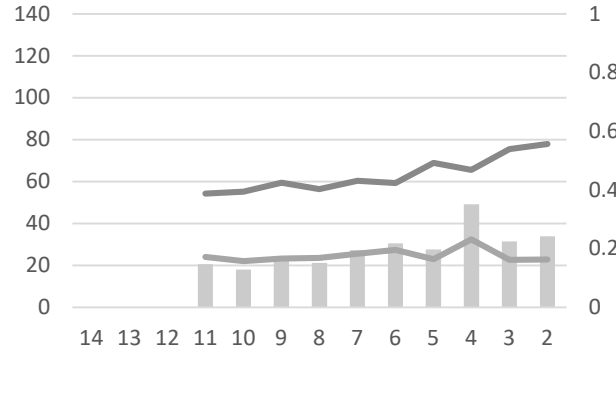
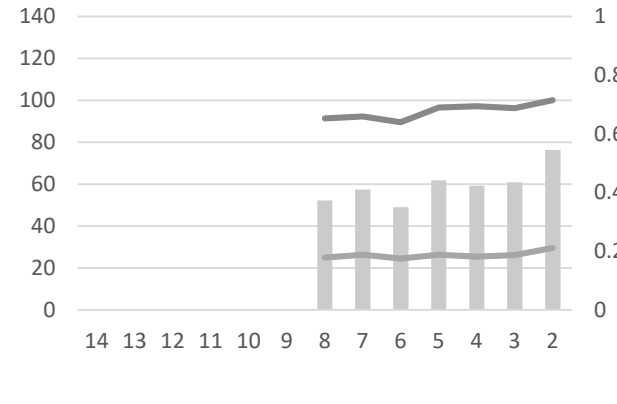
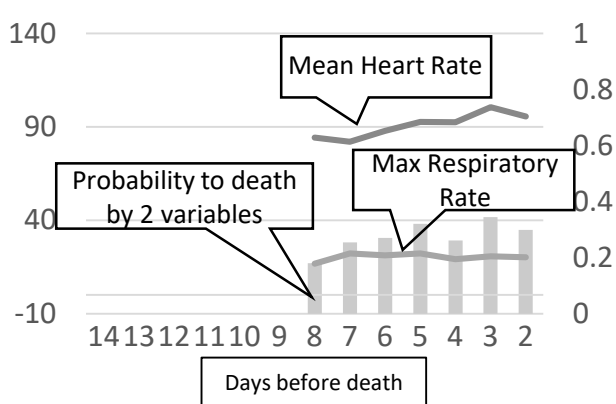
Heart/Respiratory Rate (0-140)

Probability (0-1)

ID10

ID11

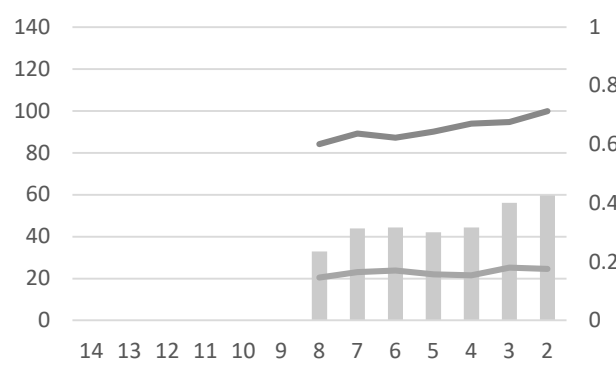
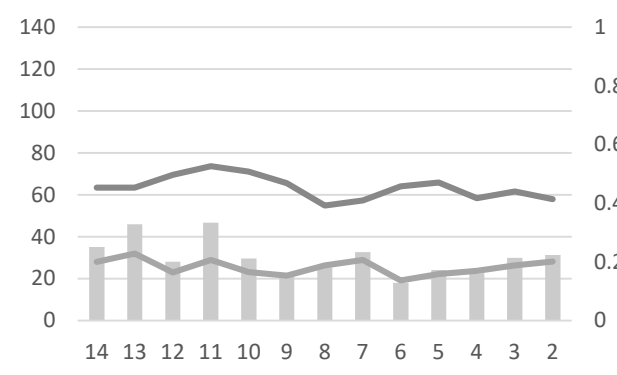
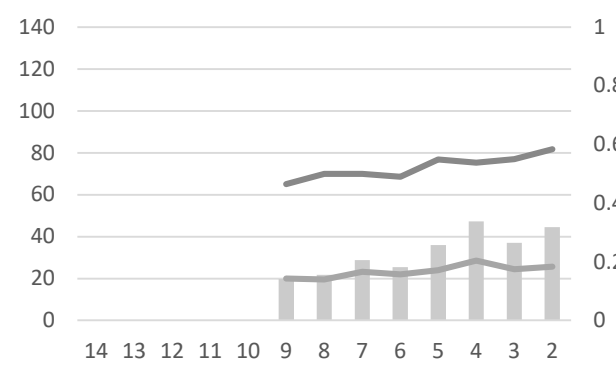
ID12



ID13

ID14

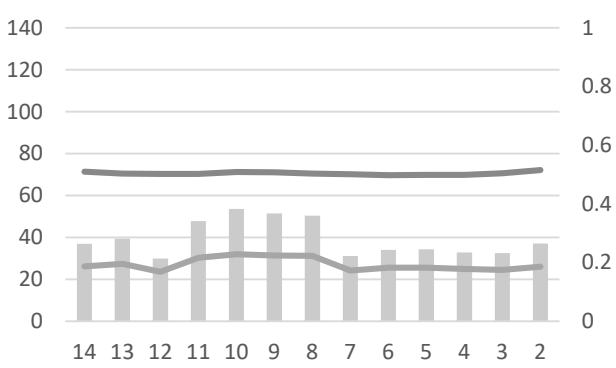
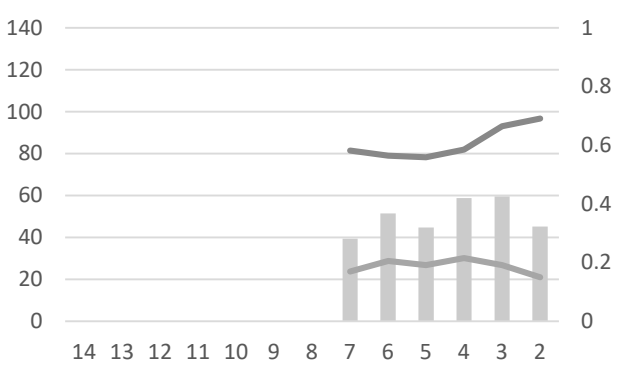
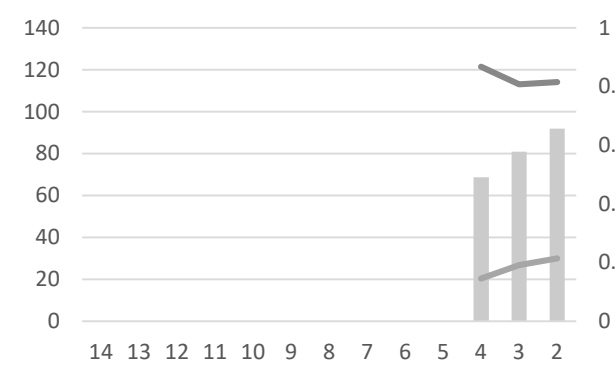
ID15



ID16

ID17

ID18



Appendix: changes in heart/respiratory rates for 14 days prior to death and the probability of death within 72 hours for each patient

