

Benefit clarification of Longxuetongluo Capsule towards ischemic stroke rats by LC-MS/MS-based metabolomics

Jing Sun ^{1,2,#}, Xianyang Chen ^{3,#}, Bei Fan ², Bo Pan ¹, Jiani Liu ², Xiaonan Chen ¹, Jiao Zheng ¹, Pengfei Tu ¹, Jiarui Han ³, Yuelin Song ^{1,*}, Jun Li ^{1,*}

¹ Modern Research Center for Traditional Chinese Medicine, School of Chinese Materia Medica, Beijing University of Chinese Medicine, Beijing 100029, China

² Institute of Food Science and Technology, Chinese Academy of Agricultural Sciences/Key Laboratory of Agro-products Quality and Safety Control in Storage and Transport Process/Laboratory of Agro-products Quality Safety Risk Assessment, Ministry of Agriculture, Beijing 100193, China

³ Bao Feng Biotech (Beijing) Co., Ltd, Linkong Economic Core District, Shunyi District, Beijing, P.R. China

#Jing Sun and Xianyang Chen contributed equally to this work

*Corresponding authors.

Tel/Fax: +86-10-64286350, *E-mail*: drlj666@163.com (J. Li);

Tel/Fax: +86-10-64286100, *E-mail*: syltwc2005@163.com (Y. Song).

No.	Content
Figure S1	Total ion current chromatography (TIC) of plasma samples derived from the different groups: C18 negative mode (a), HILIC positive mode (b).
Figure S2	Scores plot from PCA model for sham, sham+LTC, MCAO, and MCAO+LTC groups. a, C18 negative mode, $R^2X = 0.72$, $Q^2 = 0.40$; b, HILIC positive mode, $R^2X = 0.69$, $Q^2 = 0.45$.
Figure S3	Scores plot (a), permutation test (b), and S-plot (c) from OPLS-DA analysis of LC-MS data in C ₁₈ negative ion mode for MCAO+LTC and MCAO groups.
Figure S4	Scores plot (a), permutation test (b), and S-plot (c) from OPLS-DA analysis of LC-MS data in HILIC positive ion mode for MCAO+LTC and MCAO groups.

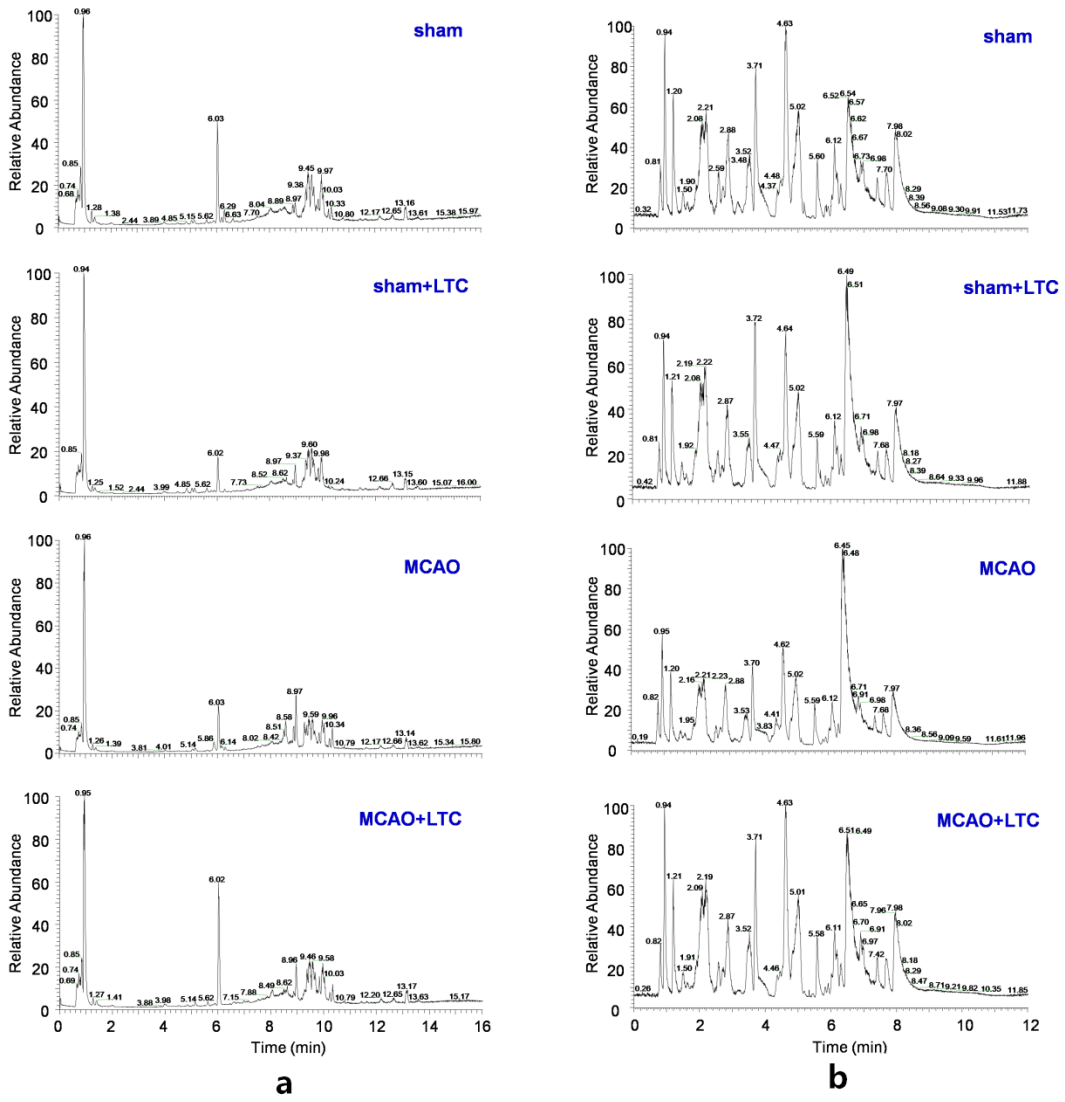


Figure S1.

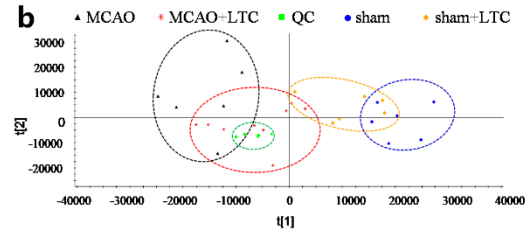
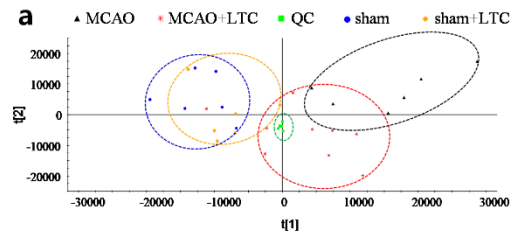


Figure S2.

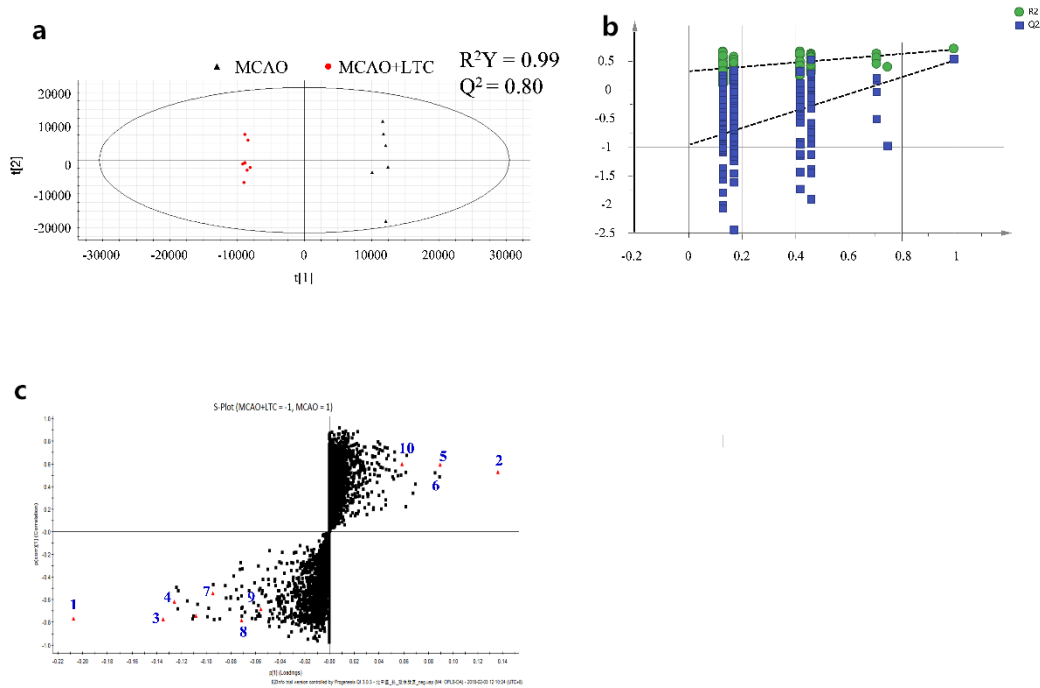


Figure S3.

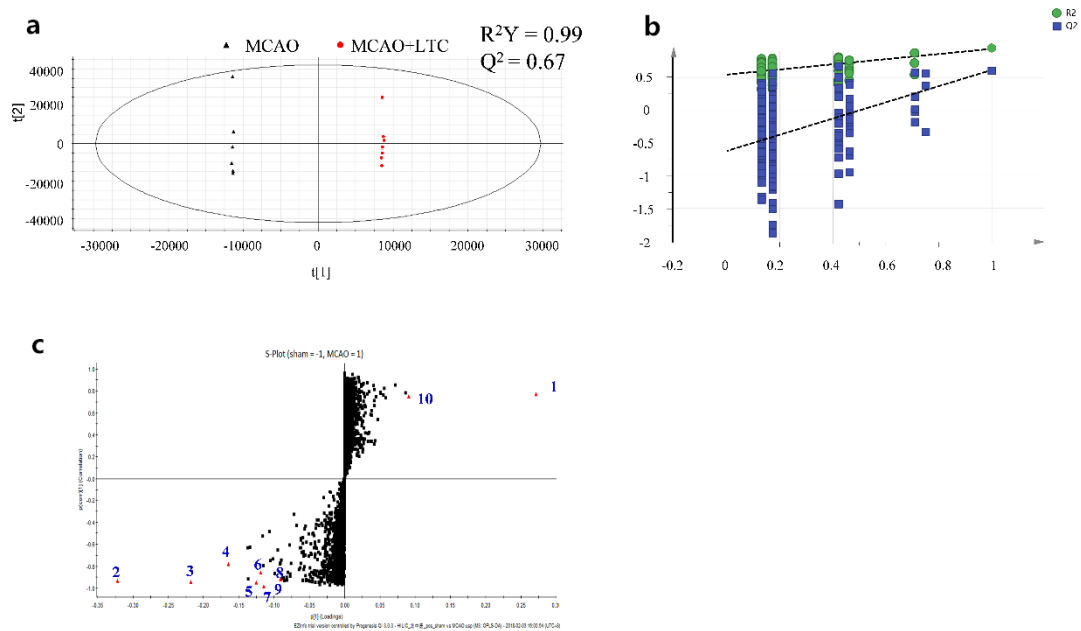


Figure S4.