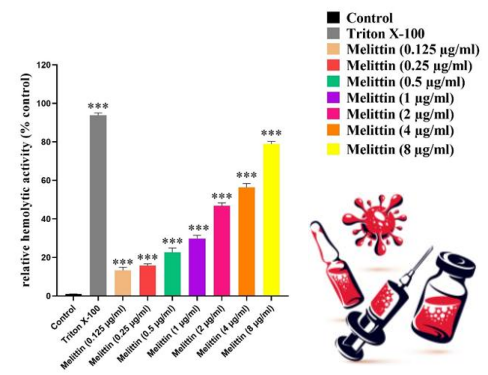


Hemolysis Assay



**Span 60 / Tween 60
Cholesterol
Organic Solvent**



**60 °c
150 rpm
30 min**



Rotary Evaporation

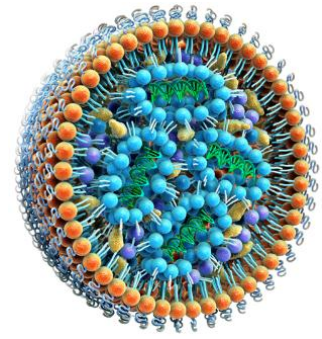
**60 °c
150 rpm
30 min**

**Dried Film
Hydration**

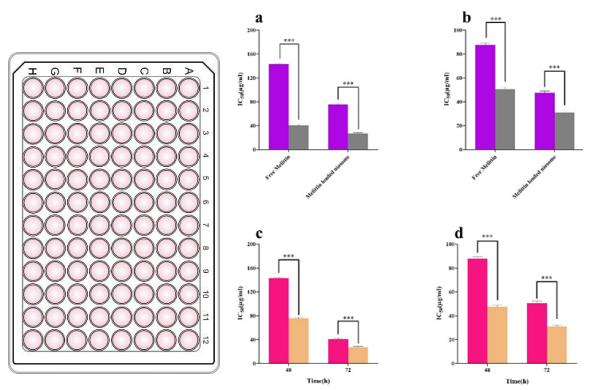
**Hydrophilic Drug = Melittin
Water / PBS**



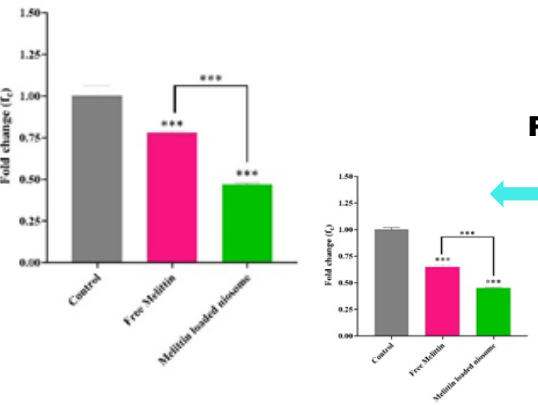
**Probe
Sonicator**



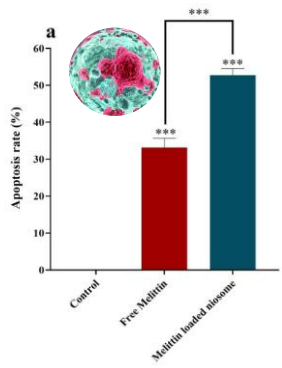
**MTT Assay
Wound Healing Assay**



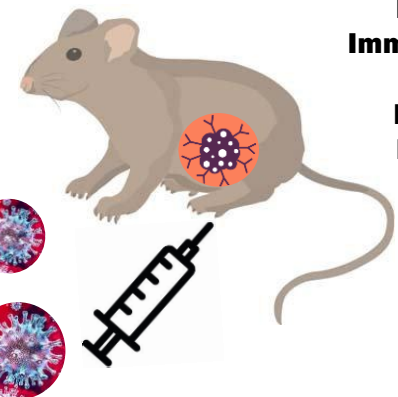
**Real-Time
PCR**



**Flow Cytometry
Soratch**



Injection



**Histopathology
Immunohistochemical
Assay
Renal and Liver
Enzymes Assay**

