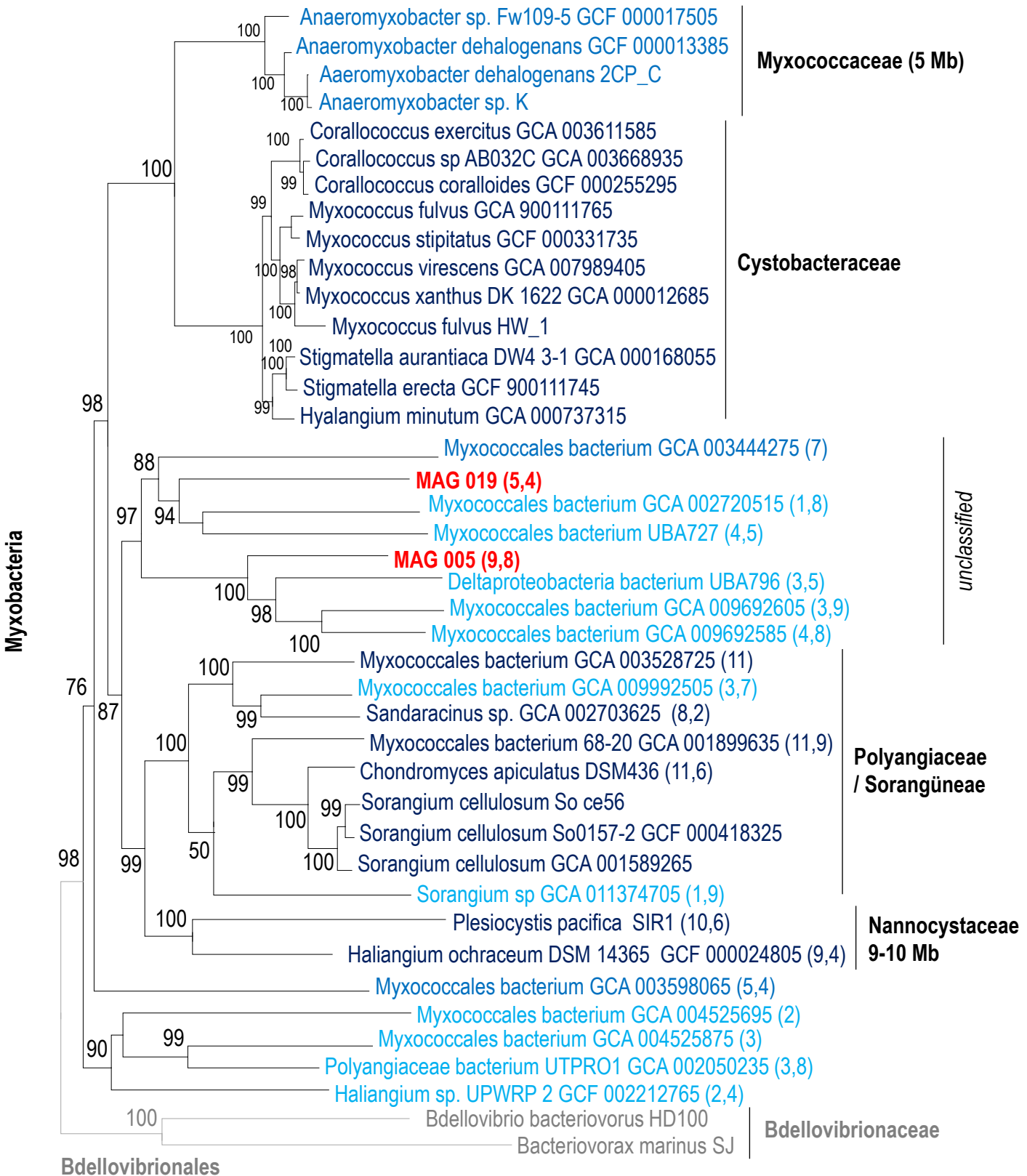


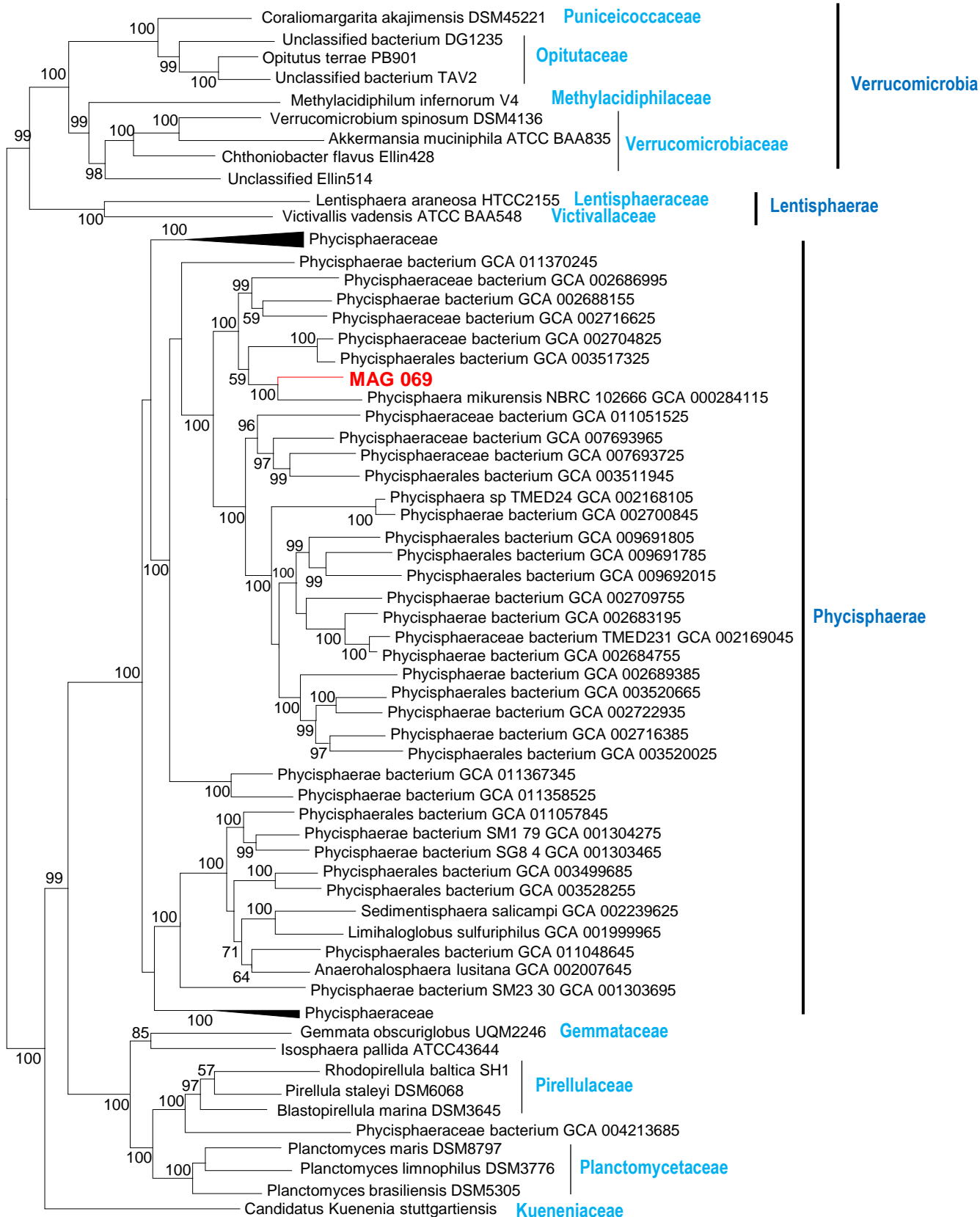
Size genome (Mb):  
 2-4  
 5-7  
 >8

**Supplementary Figure 1. Phylogenetic assignment of assembled genome bins MAG19 and MAG5.** The phylogenetic tree was obtained with PhyloPhlAn using broadly conserved proteins to extract phylogenetic signal. Organisms are colored based on genome size (Mb, in brackets).

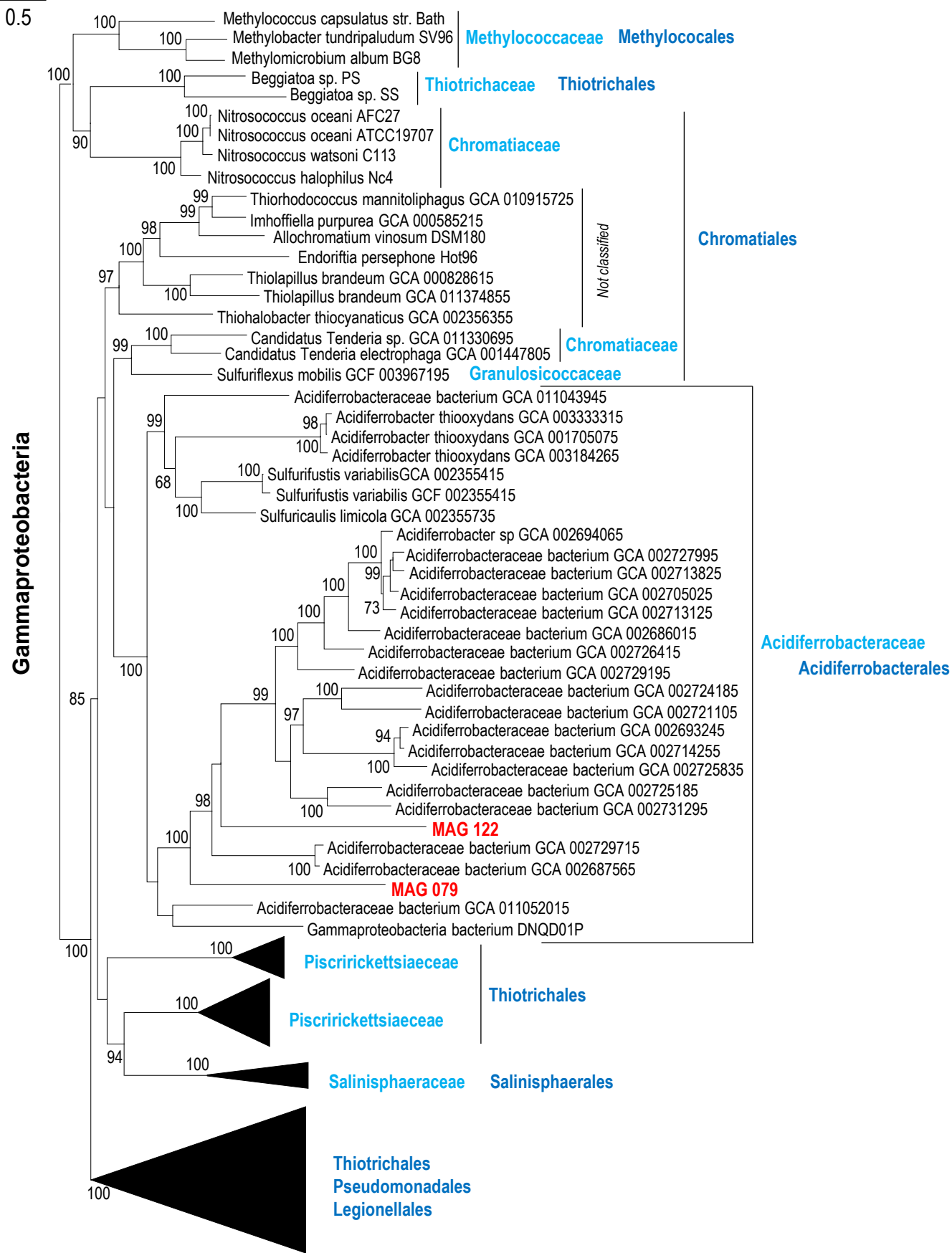


**Supplementary Figure 2. Phylogenetic assignment of assembled genome bins MAG69.** The phylogenetic tree was obtained with PhyloPhlAn using broadly conserved proteins to extract phylogenetic signal.

0.5

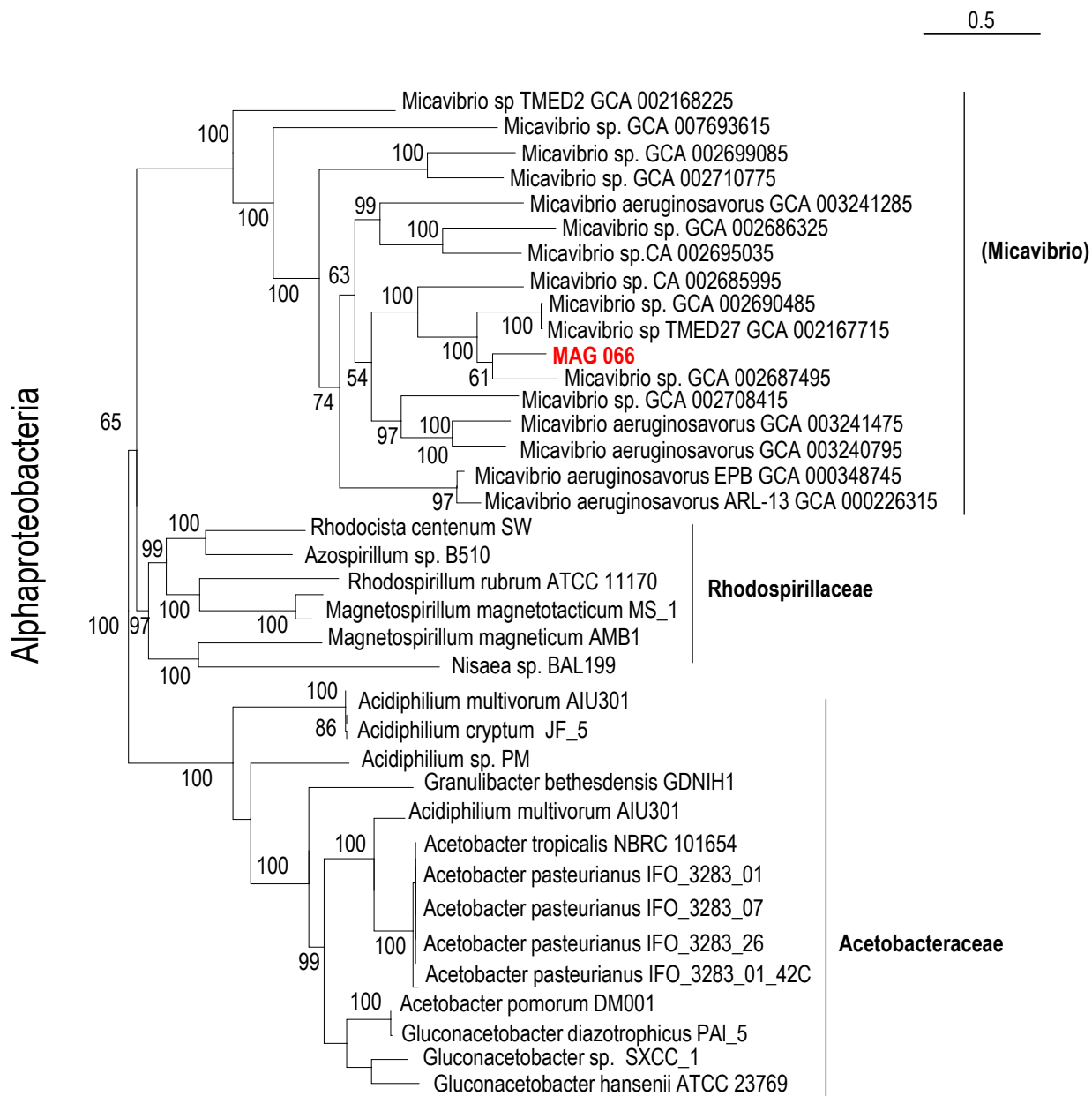


**Supplementary Figure 3. Phylogenetic assignment of assembled genome bins MAG122 and MAG79.** The phylogenetic tree was obtained with PhyloPhlAn using broadly conserved proteins to extract phylogenetic signal.

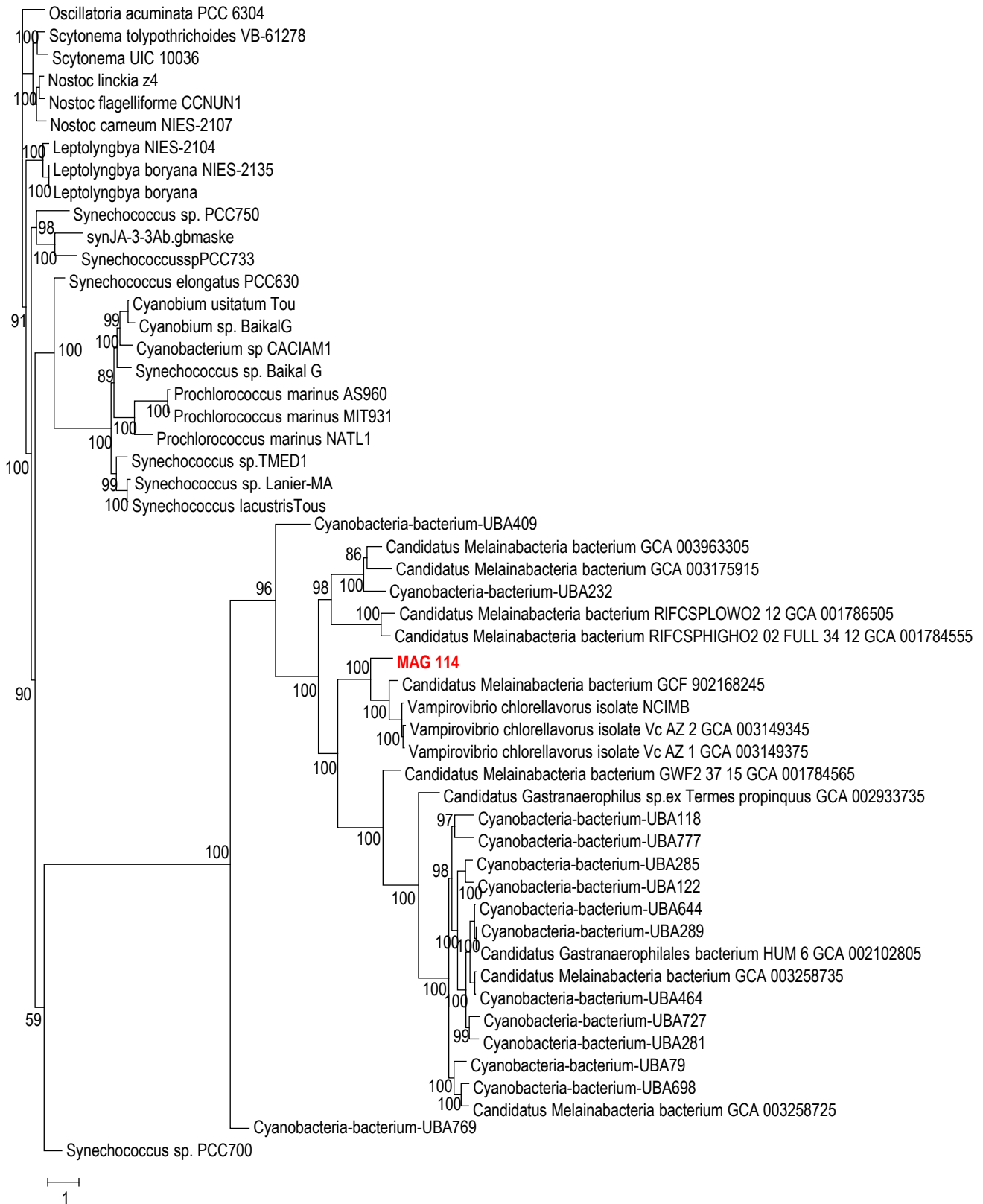




**Supplementary Figure 5. Phylogenetic assignment of assembled genome bin MAG66.** The phylogenetic tree was obtained with PhyloPhlAn using broadly conserved proteins to extract phylogenetic signal.



**Supplementary Figure 6. Phylogenetic assignment of assembled genome bin MAG114.** The phylogenetic tree was obtained with PhyloPhlAn using broadly conserved proteins to extract phylogenetic signal.



**Supplementary Figure 7. Phylogenetic assignment of assembled genomes MAG36, 54 and 106.** The phylogenetic tree was obtained with PhyloPhlAn using broadly conserved proteins to extract phylogenetic signal.

0.5

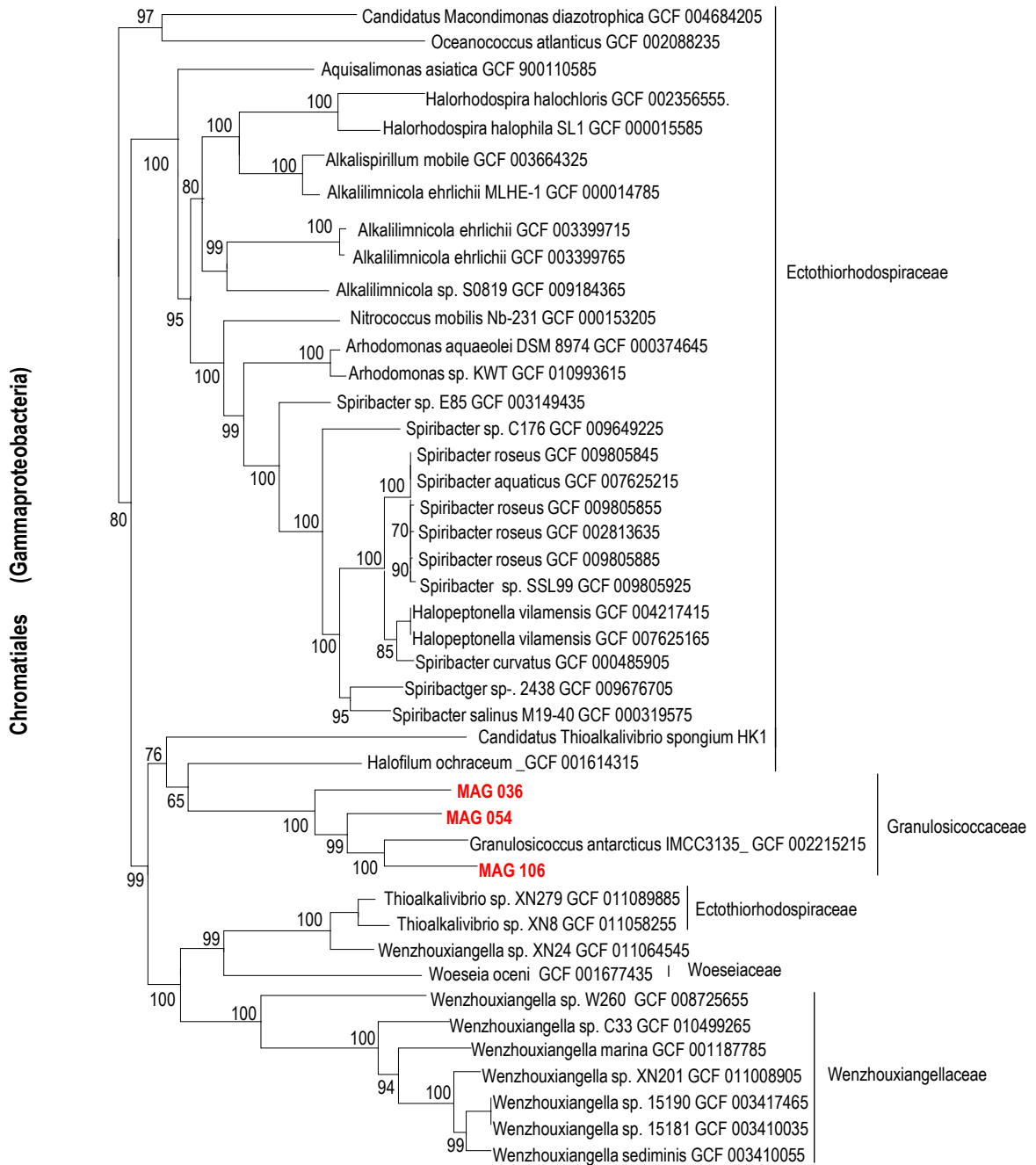




Figure S8

