

# Immunophenotyping of the PD-L1-positive cells in angioimmunoblastic T cell lymphoma and Hodgkin disease

**Markus Tiemann**

Institute for Hematopathology, Hamburg

**Vera Samoilova**

Institute for Hematopathology, Hamburg

**Dmitri Atiakshin**

Voronezskij Gosudarstvennyj Medicinskij Universitet imeni N N Burdenko

**Igor Buchwalow** (✉ [buchwalow@pathologie-hh.de](mailto:buchwalow@pathologie-hh.de))

Institute for Hematopathology, Hamburg <https://orcid.org/0000-0003-1142-7483>

---

## Research note

**Keywords:** Angioimmunoblastic T-cell lymphoma, Hodgkin lymphoma, Receptor PD-1, Ligand PD-L1

**Posted Date:** February 24th, 2020

**DOI:** <https://doi.org/10.21203/rs.2.22304/v2>

**License:**  This work is licensed under a Creative Commons Attribution 4.0 International License.

[Read Full License](#)

---

**Version of Record:** A version of this preprint was published at BMC Research Notes on March 7th, 2020. See the published version at <https://doi.org/10.1186/s13104-020-04975-w>.

# Abstract

Objective Programmed Death-1 (PD-1) and its ligand PD-L1 are now used as predictive biomarkers to guide clinical decisions. Precise characterization of PD-L1-positive cells may contribute to our knowledge of which patients derive benefit from the PD-L1 blockade therapy. Results To address this issue, we performed immunophenotyping of PD-L1-positive cells in Hodgkin lymphoma and in angioimmunoblastic T-cell lymphoma (AITL) employing multiple immunofluorescent immunolabeling. We found that PD-L1-positive cells and PD-1-positive cells both in Hodgkin lymphoma and in AITL belong to two completely different cell lineages. In both lymphomas, PD-1 was found exclusively in T-lymphocytes, whereas PD-L1 was revealed in the tumor microenvironment cells including macrophages. PD-L1 was also detected in CD30-positive cells in Hodgkin lymphoma but not in AITL. The marker of B-cell lineage, CD20, was not detectable in PD-L1-positive cells both in AITL and in Hodgkin. Our study highlights the importance of comprehensive assessment of PD-1/PD-L1 regulatory pathways for employing PD-L1 as a predictive biomarker in clinical practice. PD-L1-antibody therapy is proven in Hodgkin lymphoma. Comparative immunophenotyping of the PD-1/PD-L1 axis provides a support for attempts to prove this principle also for AITL.

## Introduction

In 1992 the team of Tasuku Honjo in a screen for genes, involved in apoptosis, discovered a protein expressed on the surface of a subset of immune cells known as T cells and named this protein PD-1 (short for Programmed Death-1) [1]. PD-1 is expressed predominantly on activated T cells [2]. In 1999, a ubiquitous antiapoptotic receptor on cancer cells was reported from the Mayo Clinic [3]. Originally it was named B7-H1 but later renamed PD-L1, because it was identified as a ligand of PD-1. The binding of PD-1 to its ligand PD-L1 induces apoptosis or exhaustion in activated T cells thus preventing the immune system from killing cancer cells [4, 5]. PD-L1 is not present in large quantity in normal tissue, but it is upregulated in a variety of tumors [6, 7]. Upregulation of PD-L1 allows cancers to evade the host immune system [8, 9]. Development of therapeutic anti-PD-1/PD-L1 monoclonal antibodies leading to the reactivation of specific antitumor immune response has emerged as a promising strategy for hematological malignancy therapy including various lymphoma arts [10-16]. PD-1/PD-L1 immune-checkpoint blockade therapies reactivate the specific antitumor immune response [17-22]. However, to predict patients who are likely to respond to treatment with PD-1/PD-L1 blockers still remains a challenge [23].

Precise characterization of PD-L1-positive cells may contribute to our knowledge of which patients derive benefit from the PD-L1 blockade therapy [24, 25]. This study was aimed at the immunophenotyping of the PD-1/PD-L1 axis in Hodgkin lymphoma and in AITL. For immunofluorescent multiple immunolabeling we used antibodies to PD-L1, PD-1 and a panel of CD antibodies raised against diverse cell types.

## Methods

## *Patients*

15 AITL and 8 Hodgkin patients were included in this study. Informed consent was obtained from all subjects. The samples were retrieved from the files of the Institute for Hematopathology, Hamburg, Germany. Histological diagnoses were established according to the WHO classification [26, 27]. This study was conducted in accordance with the “Ethical Principles for Medical Research Involving Human Subjects” and approved by the Institutional Review Board of the Institute for Hematopathology, Hamburg, Germany.

## *Tissue probe stainings*

Tissue probes were fixed in buffered 4% formaldehyde and routinely embedded in paraffin. Deparaffinized and rehydrated sections (1 µm thick) were subjected to antigen retrieval by heating in a steamer with sodium citrate buffer, pH 6.0, at 95°C x 30 min. Blocking the endogenous Fc receptors prior to incubation with primary antibodies was omitted [28]. After antigen retrieval, sections were immunoreacted with primary antibodies (**Supplementary Table 1**). Bound primary antibodies were visualized using secondary antibodies listed in the **Supplementary Table 2**. Principally, immunohistochemical staining was performed according to the standard protocols described earlier [29, 30, 31].

## *Controls*

Control incubations were: omission of primary antibodies or substitution of primary antibodies by the same IgG species (Dianova, Hamburg, Germany) at the same final concentration as the primary antibodies. The exclusion of either the primary or the secondary antibody from the immunohistochemical reaction, substitution of primary antibodies with the corresponding IgG at the same final concentration resulted in lack of immunostaining.

## **Results**

Employing multiple immunofluorescent labeling of cellular components in tissue sections of the human AITL and Hodgkin lymphoma, we found that PD-1 and PD-L1 are localized in different cells (**Fig. 1a; Supplementary Fig.1**). CD3, marker of T-cell lineage, was co-localized with PD-1 (**Fig. 1b**) and never with PD-L1. Triple immunofluorescent labelling for PD-1, PD-L1 and CD68 in tissues both of Hodgkin lymphoma and AITL (**Fig. 2**) revealed that CD68, marker for macrophage lineage, including monocytes and histiocytes, was solely and exclusively expressed in PD-L1+ cells and never in PD-1+ cells. This indicates that PD-1+ and PD-L1+ cells belong to completely different cell lineages.

For simultaneously detecting antigens from the same host species as presented in **Fig. 2** and in **Supplementary Fig. 2**, we performed tyramide signal amplification (TSA) with the subsequent heat elution treatment after each immunostaining step [32, 33].

CD30 expression in AITL and Hodgkin lymphoma is currently of great interest, because therapy targeting CD30 is of clinical benefit [34]. CD30, belonging to the tumor necrosis factor receptor superfamily, is highly expressed on Reed/Sternberg cells (RSC) and believed to be involved in tumorigenesis and tumor progression [35]. In this study, we found CD30-positive cells both in Hodgkin lymphoma and in most cases in the AITL. However, histotopographic relations of CD30 antigen with PD-1 and PD-L1 revealed some differences. As seen in **Fig. 3**, CD30-positive cells in AITL do not express PD-L1, whereas PD-L1 antigen in Hodgkin lymphoma was detected in CD30-positive cells including Reed–Sternberg cells (RSC), preferably at the periphery, possibly at the cell membrane. In contrast to PD-L1, PD-1 was not found in RSC (**Supplementary Fig. 3**). Our results confirm and extend prior studies of PD-L1 expression in RSC in Hodgkin lymphoma [6, 36].

It was earlier reported that CD30-positive cells exhibit a B-cell or a T-cell phenotype [37] and that RSC can derive from B lymphocytes [38, 39]. However in our study, we found that PD-L1-positive cells including rare malignant Hodgkin and RSC cells do not express CD20 (the marker of B-cell lineage) neither in Hodgkin lymphoma (**Supplementary Fig. 2**) nor in AITL (**Supplementary Fig. 4**). To prove a possible co-expression of CD20 in PD-L1+ cells in other tumors differing from AITL and Hodgkin lymphoma, we analyzed the probes of mediastinal lymphoma [4] taken as a control and in this case observed a definite co-localization of PD-L1 and CD20 (**Supplementary Fig. 5**).

Since it was assumed that CD10 antibody might be useful in the diagnosis of AITL [40], we decided to perform immunofluorescent double staining of PD-L1 and PD-1 vs CD10 in this lymphoma. We found that PD-L1 and CD10 are never co-localized in the same cells (**Supplementary Fig. 6 a, b, c**), whereas the majority of PD-1-positive cells revealed a co-expression of CD10 (**Supplementary Fig. 6 d, e, f**).

## Discussion

PD-L1 was originally characterized as a ubiquitous antiapoptotic receptor on cancer cells [3] and it has been proposed as potential target in cancer immunotherapy in human clinic [24, 25]. However, we found that cancer cells (CD10+ and CD30+ cells) in AITL lacked the expression of PD-L1 (**Supplementary Fig. 3 and Supplementary Fig. 6**), whereas CD30+ cells including RSC in Hodgkin lymphoma revealed a co-expression of PD-L1 on the surface of these cells (**Fig. 3**). This is consistent with reports that PD-L1 expression in malignant cells of various cancers varies from 0% to 50% [7]. Therefore PD-L1 expression by tumor cells cannot serve as an absolute biomarker of clinical response to checkpoint blockade in immunotherapy, while patients, by which malignant cell in the tumor lack PD-L1 expression, also responded positively to PD-L1 checkpoint blockade therapies [7, 41, 42].

Patients with overexpressed PD-L1 in the tumor microenvironment, have improved clinical outcomes with anti-PD-L1-directed therapy [24]. Therefore PD-L1 expression in the tumor microenvironment can be

regarded as a more valuable biomarker to guide clinical decisions. In our study, PD-L1 was found in the tumor microenvironment richly expressed in cells of macrophage lineage (**Fig. 2**). Apparently antigen-presenting cells such as macrophages may serve as a main target in PD-L1 checkpoint blockade therapies in AITL and Hodgkin lymphoma.

Our findings that CD10 in AITL is co-localized with PD-1-positive T-cells but not with PD-L1-positive cells in the tumor microenvironment support the recent studies describing CD10 as a phenotypic marker that specifically identifies the tumor cells in 90% of AITL, including the early cases [43]. The presence of CD10-positive T-cells distinguishes AITL from other unspecified peripheral T-cell lymphomas, where no CD10-positive T cells are present. Some authors reported the utility of CD10 antibody as a diagnostic marker of AITL [40]. However, further studies correlating with the clinical course will be of interest in determining the biological significance of CD10 in the AITL.

In our study, we found that PD-L1-positive cells including RSC in Hodgkin lymphoma (**Supplementary Fig. 2**) and in AITL (**Supplementary Fig. 4**) do not express CD20 (the marker of B-cell lineage). It is in accord with reports that HRS cells are CD20 negative due to downregulation of the B-cell program and it is not surprising that they CD20 and PD-L1 do not co-localize together [4, 44]. Also, these cells universally express PD-L1 in most instances with amplifications of the PD-L1 locus. This issue must further be assessed in view of the reports on elevated PD-L1 expression on B cells in other tumors [45].

Hodgkin lymphoma and AITL are malignancies in which rare malignant cells are surrounded by an extensive but ineffective inflammatory/immune cell infiltrate including PD-1-positive T-cells and PD-L1-positive antigen presenting cells. This striking feature suggests that malignant cells in these lymphomas escape immunosurveillance and interact with immune cells in the cancer microenvironment for survival and growth. Enhanced PD-1/PD-L1 signaling in Hodgkin lymphoma [4] and likewise in AITL can make these both tumors uniquely sensitive to PD-1/PD-L1 blockade.

Some authors reported on the co-expression of PD-1/PD-L1 in tumors, but virtually they presented only a simultaneous expression of PD-1 and PD-L1 in a tumor tissue taken en bloc and not in the same cells [46]. We employed multiple immunofluorescent labeling of cellular components in tissue sections of the human AITL and Hodgkin lymphoma and found that PD-1 and PD-L1 are localized in different cells, which implies that PD-1+ and PD-L1+ cells both in AITL and in Hodgkin lymphoma belong to two different cell lineages.

To summarize, our data allowed us to draw several conclusions. PD-1+ and PD-L1+ cells in the AITL and Hodgkin lymphoma are never co-localized in the same cells and therefore belong to two different cell lineages. Generally, the immunophenotype of PD-1+ and PD-L1+ cells in AITL and Hodgkin is similar, with an only exception relating to CD30 and CD10. In both lymphomas, PD-1 was found exclusively in T-lymphocytes, whereas PD-L1 was revealed in antigen-presenting cells – macrophages. PD-L1 was also detected in CD30-positive cells in Hodgkin lymphoma but not in AITL. The marker of B-cell lineage, CD20, was not detectable in PD-L1-positive cells both in AITL and in Hodgkin. HRS cells are CD20 negative due to downregulation of the B-cell program and it is not surprising that they CD20 and PD-L1 do not co-

localize together. Characterization of PD-L1+ cells in these lymphomas may contribute to the development of effective approaches to the delivery anti-PD-L1 antibodies to tumors in PD-L1 blockade therapy for patients suffering from PD-L1-expressing tumors. PD-L1-antibody therapy is already proven in Hodgkin lymphoma, but there is no information about PD-L1-antibody effect in AITL. Our findings may provide further insight into an opportunity of at least an experimental attempt or clinical study as proof of the similar approach to improve the results of treatment in AITL.

## Limitations

It would be interesting to what proportion of CD30+ cells in AITL are CD3+. This question was beyond the scope of our study but it must further be assessed since that has therapeutic implications in this disease.

## List Of Abbreviations

Programmed Death-1 (PD-1) and its ligand PD-L1;

Angioimmunoblastic T-cell lymphoma (AITL)

Reed–Sternberg cells (RSC)

## Declarations

### Ethics approval and consent to participate

This study was conducted in accordance with the principles of World Medical Association Declaration of Helsinki “Ethical Principles for Medical Research Involving Human Subjects” and approved by the Institutional Review Board of the Institute for Hematopathology, Hamburg, Germany (approval No.383). All patients were informed of the investigational nature of this study and provided their written informed consent. The samples were qualified as redundant clinical specimens that had been de-identified and unlinked from patient information.

### Consent for publication

Not applicable.

### Availability of data and materials

All data and materials are available on reasonable request. Address to **I.B. (email: [buchwalow@pathologie-hh.de](mailto:buchwalow@pathologie-hh.de))** or **M.T. (email: [mtiemann@hp-hamburg.de](mailto:mtiemann@hp-hamburg.de))**

Institute for Hematopathology, Hamburg, Germany.

### Competing interests

The authors declare that they have no competing interests.

## Funding

No funding was acquired for this study.

## Authors' contributions

MT and IB designed the study, performed the analysis and draft the manuscript. VS, and DA collected the clinical data and did immunohistochemistry. All authors read and approved the final manuscript.

## Acknowledgements

This research received no specific grants from any funding agency in the public, commercial or not-for-profit sectors. We thank Denis Morozov and Alexander Glomb for perfect technical assistance and other colleagues from the immunohistology laboratory for sharing probes and reagents.

## Corresponding author

Correspondence to I.B. (email: [buchwalow@pathologie-hh.de](mailto:buchwalow@pathologie-hh.de))

## References

1. Ishida Y, Agata Y, Shibahara K, Honjo T. Induced expression of PD-1, a novel member of the immunoglobulin gene superfamily, upon programmed cell death. *EMBO J.* 1992; 11(11):3887-3895.
2. Simon S, Labarriere N. PD-1 expression on tumor-specific T cells: Friend or foe for immunotherapy? *Oncoimmunology.* 2017; 7(1):e1364828.
3. Dong H, Zhu G, Tamada K, Chen L. B7-H1, a third member of the B7 family, co-stimulates T-cell proliferation and interleukin-10 secretion. *Nat Med.* 1999; 5(12):1365-1369.
4. Liu WR, Shipp MA. Signaling pathways and immune evasion mechanisms in classical Hodgkin lymphoma. *Blood.* 2017; 130(21):2265-2270.
5. Goodman A, Patel SP, Kurzrock R. PD-1-PD-L1 immune-checkpoint blockade in B-cell lymphomas. *Nat Rev Clin Oncol.* 2017; 14(4):203-220.
6. Panjwani PK, Charu V, DeLisser M, Molina-Kirsch H, Natkunam Y, Zhao S. Programmed death-1 ligands PD-L1 and PD-L2 show distinctive and restricted patterns of expression in lymphoma subtypes. *Hum Pathol.* 2018; 71:91-99.
7. Kim HR, Ha SJ, Hong MH, Heo SJ, Koh YW, Choi EC, Kim EK, Pyo KH, Jung I, Seo D et al. PD-L1 expression on immune cells, but not on tumor cells, is a favorable prognostic factor for head and neck cancer patients. *Sci Rep.* 2016; 6:36956.
8. Thompson RH, Gillett MD, Chevillat JC, Lohse CM, Dong H, Webster WS, Krejci KG, Lobo JR, Sengupta S, Chen L et al. Costimulatory B7-H1 in renal cell carcinoma patients: Indicator of tumor

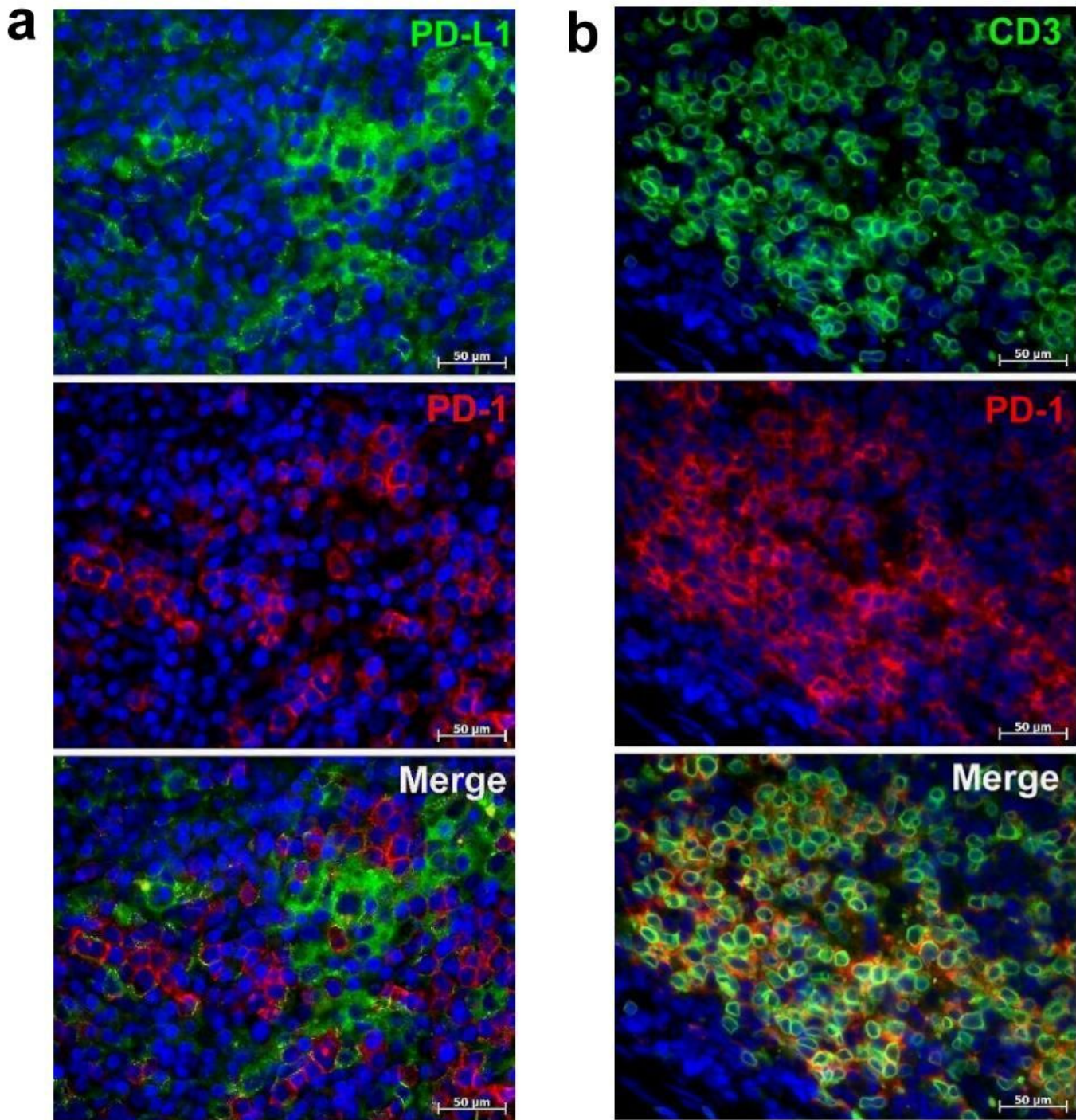
- aggressiveness and potential therapeutic target. *Proceedings of the National Academy of Sciences of the United States of America*. 2004; 101(49):17174-17179.
9. Maekawa N, Konnai S, Okagawa T, Nishimori A, Ikebuchi R, Izumi Y, Takagi S, Kagawa Y, Nakajima C, Suzuki Y et al. Immunohistochemical Analysis of PD-L1 Expression in Canine Malignant Cancers and PD-1 Expression on Lymphocytes in Canine Oral Melanoma. *PLoS One*. 2016; 11(6):e0157176.
  10. Armand P. Immune checkpoint blockade in hematologic malignancies. *Blood*. 2015; 125(22):3393-3400.
  11. Kekre N, Kim HT, Thanarajasingam G, Armand P, Antin JH, Cutler C, Nikiforow S, Ho VT, Koreth J, Alyea EP et al. Efficacy of immune suppression tapering in treating relapse after reduced intensity allogeneic stem cell transplantation. *Haematologica*. 2015; 100(9):1222-1227.
  12. Goodman A, Patel SP, Kurzrock R. PD-1–PD-L1 immune-checkpoint blockade in B-cell lymphomas. *Nature Reviews Clinical Oncology*. 2016; 14:203.
  13. Gatalica Z, Bilalovic N, Vranic S, Arguello D, Reddy S, Ghosh N. PD-L1 and PD1 Expression in Lymphomas. *Blood*. 2015; 126(23):3899-3899.
  14. He J, Hu Y, Hu M, Li B. Development of PD-1/PD-L1 Pathway in Tumor Immune Microenvironment and Treatment for Non-Small Cell Lung Cancer. *Scientific Reports*. 2015; 5:13110.
  15. Zak KM, Grudnik P, Magiera K, Dömling A, Dubin G, Holak TA. Structural Biology of the Immune Checkpoint Receptor PD-1 and Its Ligands PD-L1/PD-L2. *Structure*. 2017; 25(8):1163-1174.
  16. Xu-Monette ZY, Zhou J, Young KH. PD-1 expression and clinical PD-1 blockade in B-cell lymphomas. *Blood*. 2018; 131(1):68-83.
  17. Aguiar PN Jr DMR, Hall P, Tadokoro H, Lima Lopes G.. PD-L1 expression as a predictive biomarker in advanced non-small-cell lung cancer: updated survival data. *Immunotherapy*. 2017; 9(6):499-506.
  18. Topalian SL, Drake CG, Pardoll DM. Targeting the PD-1/B7-H1(PD-L1) pathway to activate anti-tumor immunity. *Curr Opin Immunol*. 2012; 24(2):207-212.
  19. Topalian SL, Hodi FS, Brahmer JR, Gettinger SN, Smith DC, McDermott DF, Powderly JD, Carvajal RD, Sosman JA, Atkins MB et al. Safety, activity, and immune correlates of anti-PD-1 antibody in cancer. *N Engl J Med*. 2012; 366(26):2443-2454.
  20. Klyuchagina Y, Sokolova Z, Baryshnikova M. Role of PD-1 Receptor and Its Ligands PD-L1 and PD-L2 in Cancer Immunotherapy. *Onkopediatria*. 2017; 4(1):49–55.
  21. Patel SP, Kurzrock R. PD-L1 Expression as a Predictive Biomarker in Cancer Immunotherapy. *Molecular Cancer Therapeutics*. 2015; 14(4):847-856.
  22. Alsaab HO, Sau S, Alzhrani R, Tatiparti K, Bhise K, Kashaw SK, Iyer AK. PD-1 and PD-L1 Checkpoint Signaling Inhibition for Cancer Immunotherapy: Mechanism, Combinations, and Clinical Outcome. *Front Pharmacol*. 2017; 8:561.
  23. Fujii T, Naing A, Rolfo C, Hajjar J. Biomarkers of response to immune checkpoint blockade in cancer treatment. *Crit Rev Oncol Hematol*. 2018; 130:108-120.



24. Liu D, Wang S, Bindeman W. Clinical applications of PD-L1 bioassays for cancer immunotherapy. *Journal of Hematology & Oncology*. 2017; 10(1):110.
25. Schildhaus HU. [Predictive value of PD-L1 diagnostics]. *Pathologe* 2018; 39(6):498-519.
26. Harris NL, Jaffe ES, Diebold J, Flandrin G, Muller-Hermelink HK, Vardiman J. Lymphoma classification—from controversy to consensus: the R.E.A.L. and WHO Classification of lymphoid neoplasms. *Ann Oncol*. 2000; 11 Suppl 1:3-10.
27. Stein H. [The new WHO classification of malignant lymphoma. After "REAL" a further step on the road to a worldwide consensus]. *Pathologe*. 2000; 21(2):101-105.
28. Buchwalow I, SamoiloVA V, Boecker W, Tiemann M. Non-specific binding of antibodies in immunohistochemistry: fallacies and facts. *Sci Rep*. 2011; 1:28.
29. Buchwalow IB, Boecker W. *Immunohistochemistry: Basics and Methods*, 1 edn. Heidelberg, Dordrecht, London, New York: Springer. 2010.
30. Buchwalow I, Atiakshin D, SamoiloVA V, Boecker W, Tiemann M. Identification of autofluorescent cells in human angioimmunoblastic T-cell lymphoma. *Histochem Cell Biol*. 2018; 149(2):169-177.
31. Boecker W, Stenman G, Loening T, Andersson MK, Bankfalvi A, von Holstein S, Heegaard S, Lange A, Berg T, SamoiloVA V et al. K5/K14-positive cells contribute to salivary gland-like breast tumors with myoepithelial differentiation. *Mod Pathol*. 2013; 26(8):1086-1100.
32. Buchwalow I, SamoiloVA V, Boecker W, Tiemann M. Multiple immunolabeling with antibodies from the same host species in combination with tyramide signal amplification. *Acta Histochem*. 2018; 120(5):405-411.
33. Zhang W, Hubbard A, Jones T, Racolta A, Bhaumik S, Cummins N, Zhang L, Garsha K, Ventura F, Lefever MR et al. Fully automated 5-plex fluorescent immunohistochemistry with tyramide signal amplification and same species antibodies. *Lab Invest*. 2017; 97(7):873-885.
34. Bhatt G, Maddocks K, Christian B. CD30 and CD30-Targeted Therapies in Hodgkin Lymphoma and Other B cell Lymphomas. *Current Hematologic Malignancy Reports* 2016; 11(6):480-491.
35. Molin D, Fischer M, Xiang Z, Larsson U, Harvima I, Venge P, Nilsson K, Sundstrom C, Enblad G, Nilsson G. Mast cells express functional CD30 ligand and are the predominant CD30L-positive cells in Hodgkin's disease. *Br J Haematol*. 2001; 114(3):616-623.
36. Roemer MG, Advani RH, Ligon AH, Natkunam Y, Redd RA, Homer H, Connelly CF, Sun HH, Daadi SE, Freeman GJ et al. PD-L1 and PD-L2 Genetic Alterations Define Classical Hodgkin Lymphoma and Predict Outcome. *J Clin Oncol*. 2016; 34(23):2690-2697.
37. Onaindia A, Martínez N, Montes-Moreno S, Almaraz C, Rodríguez-Pinilla SM, Cereceda L, Revert JB, Ortega C, Tardio A, González L et al. CD30 Expression by B and T Cells: A Frequent Finding in Angioimmunoblastic T-Cell Lymphoma and Peripheral T-Cell Lymphoma-Not Otherwise Specified. *The American Journal of Surgical Pathology*. 2016, 40(3):378-385.
38. Smith LB. Nodular lymphocyte predominant Hodgkin lymphoma: diagnostic pearls and pitfalls. *Arch Pathol Lab Med*. 2010; 134(10):1434-1439.

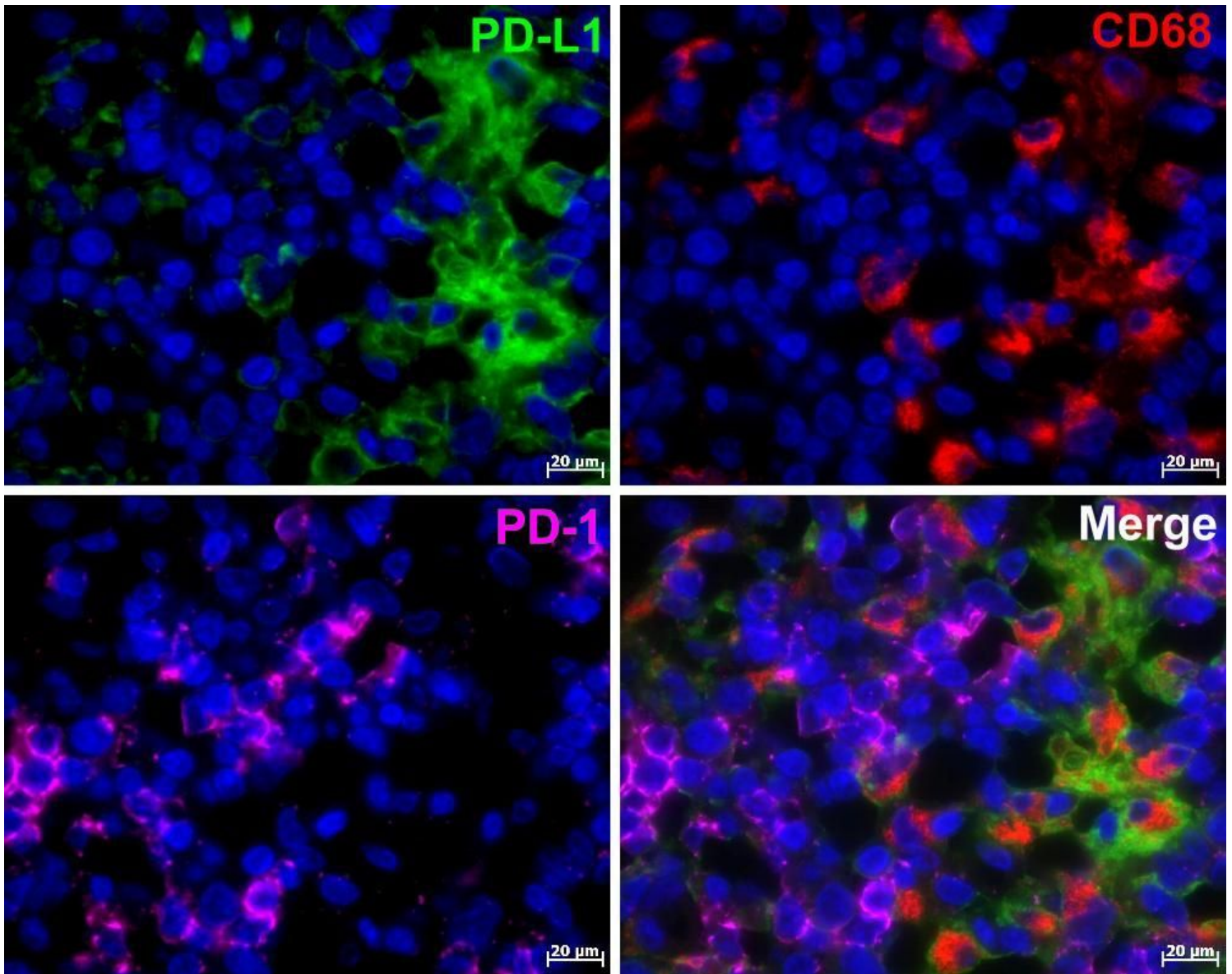
39. Kuppers R, Roers A, Kanzler H. Molecular single cell studies of normal and transformed lymphocytes. *Cancer Surv.* 1997; 30:45-58.
40. Mlika M, Helal I, Laabidi S, Braham E, El Mezni F. Is CD10 antibody useful in the diagnosis of angioimmunoblastic T-cell lymphoma? *J Immunoassay Immunochem* 2015, 36(5):510-516.
41. Gibbons Johnson RM, Dong H. Functional Expression of Programmed Death-Ligand 1 (B7-H1) by Immune Cells and Tumor Cells. *Front Immunol.* 2017; 8:961.
42. Patel SP, Kurzrock R. PD-L1 Expression as a Predictive Biomarker in Cancer Immunotherapy. *Mol Cancer Ther.* 2015; 14(4):847-856.
43. Attygalle A, Al-Jehani R, Diss TC, Munson P, Liu H, Du MQ, Isaacson PG, Dogan A. Neoplastic T cells in angioimmunoblastic T-cell lymphoma express CD10. *Blood.* 2002; 99(2):627-633.
44. Liu WR, Shipp MA. Signaling pathways and immune evasion mechanisms in classical Hodgkin lymphoma. *Hematology Am Soc Hematol Educ Program.* 2017; 2017(1):310-316.
45. Khan AR, Hams E, Floudas A, Sparwasser T, Weaver CT, Fallon PG. PD-L1hi B cells are critical regulators of humoral immunity. *Nat Commun.* 2015; 6:5997.
46. Gatalica Z, Snyder C, Maney T, Ghazalpour A, Holterman DA, Xiao N, Overberg P, Rose I, Basu GD, Vranic S et al. Programmed cell death 1 (PD-1) and its ligand (PD-L1) in common cancers and their correlation with molecular cancer type. *Cancer Epidemiol Biomarkers Prev.* 2014; 23(12):2965-2970.

## Figures



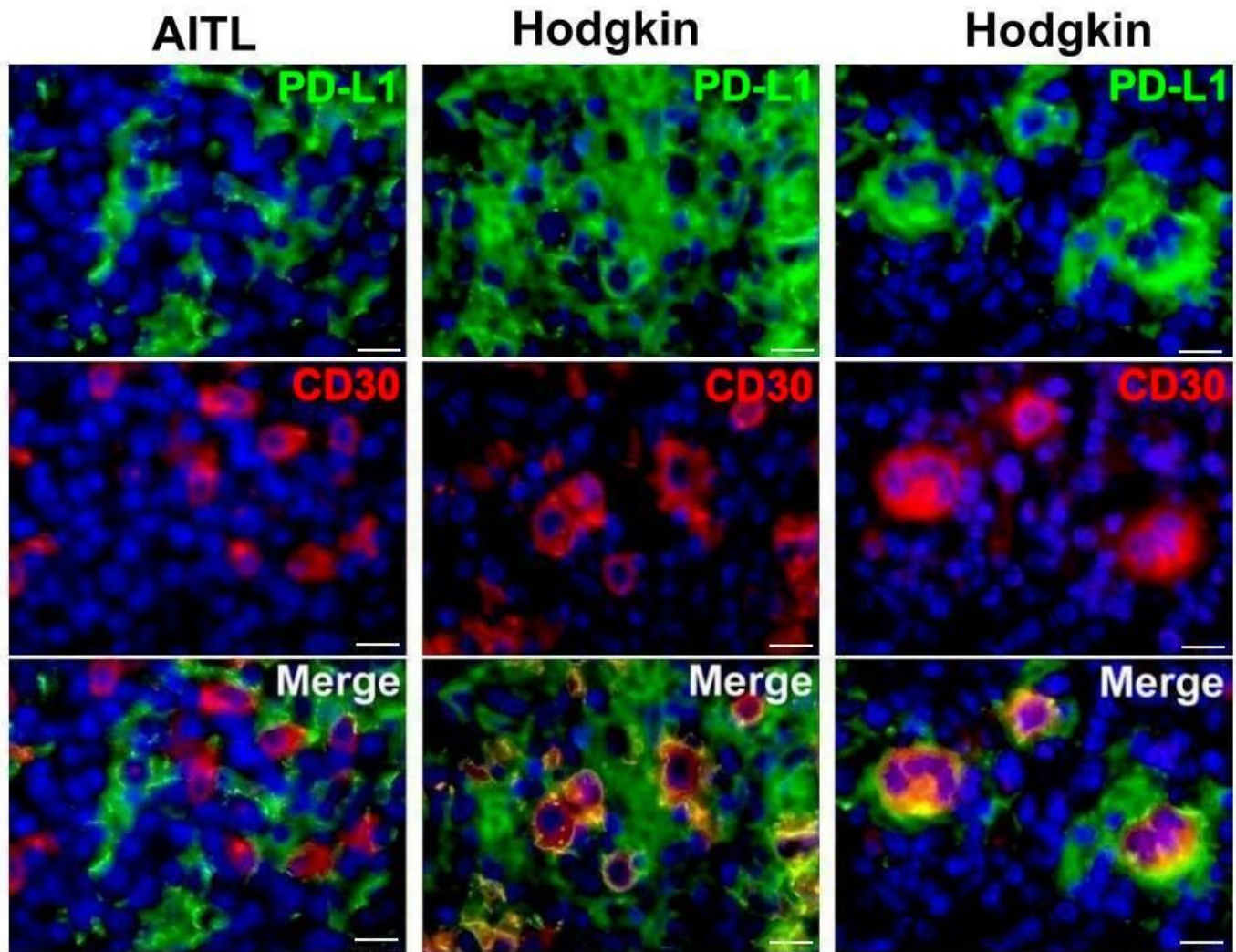
**Figure 1**

Immunofluorescent staining of PD-1, PD-L1 and CD3 in AITL. (a) Immunofluorescent double staining of PD-1 (Cy3, red) and PD-L1 (Alexa Fluor-488, green). PD-1 and PD-L1 are expressed poles apart from each other. (b) Immunofluorescent double staining of PD-1 (Cy3, red) and CD3 (Alexa Fluor-488, green). The majority of CD3-positive cells bear the PD-1 marker. Nuclei counterstained with DAPI (blue channel).



**Figure 2**

Immunofluorescent triple staining of PD-1, PD-L1 and CD68 in AITL: PD-L1 (Alexa Fluor-488, green), PD-1 (Alexa Fluor-647, magenta) and CD68 (Cy3, red). Nuclei counterstained with DAPI (blue channel). PD-1 and PD-L1 are expressed poles apart from each other, and only PD-L1- positive cells co-express CD68, the marker for macrophage lineage.



**Figure 3**

Immunofluorescent double staining of PD-L1 and CD30 in AITL and Hodgkin lymphoma: PD-L1 (Alexa Fluor-488, green), CD30 (Cy3, red). Nuclei counterstained with DAPI (blue channel). Unlike AITL, where CD30-positive cells do not co-express PD-L1, CD30+ cells in Hodgkin lymphoma bear PD-L1 antigen on the cell membrane. Scale bar 20  $\mu$ m.

## Supplementary Files

This is a list of supplementary files associated with this preprint. Click to download.

- [SupplementaryTable2Secondaryantibodies.doc](#)
- [SupplementaryFigure6Tiemann.JPG](#)
- [SupplementaryFigure1Tiemann.JPG](#)
- [SupplementaryFigure2Tiemann.JPG](#)

- [SupplementaryFigure4Tiemann.JPG](#)
- [SupplementaryFigure3Tiemann.jpg](#)
- [SupplementaryFigure5Tiemann.JPG](#)
- [SupplementaryFigurelegends.docx](#)
- [SupplementaryTable1.Primaryantibodies.docx](#)