

The Inflammatory Markers of Multisystem Inflammatory Syndrome in children (MIS-C) and adolescents during the COVID-19 Pandemic: A Meta-analysis

Yan Zhao¹, Li-juan Yin^{2*}, Jenil Patel³, Lei Tang¹ and Ying Huang²

Affiliations:

¹Department of Pediatrics, People's Hospital of Chongqing Banan District, Chongqing, 401320, China.

²Department of Respiratory Medicine, Children's Hospital of Chongqing Medical University; National Clinical Research Center for Child Health and Disorders; Ministry of Education Key Laboratory of Child Development and Disorders; China International Science and Technology Cooperation Base of Child Development and Critical Disorders; Chongqing Key Laboratory of Pediatrics; Chongqing, 400014, China. Electronic address: yudishengyin4356@sina.com.

³Department of Epidemiology, Fay W. Boozman College of Public Health, University of Arkansas for Medical Sciences

Corresponding Author:

Lijuan Yin, Electronic address: yudishengyin4356@sina.com; Address: Children's Hospital of Chongqing Medical University, Zhongshan Second Road of Yuzhong District, Chongqing 400014, China; Telephone: +86 13983885611.

Word count: 2993

eFigure 2: forest plots of MIS-C vs. COVID-19

eFigure 3: forest plots of MIS-C vs. severe/non-severe COVID-19

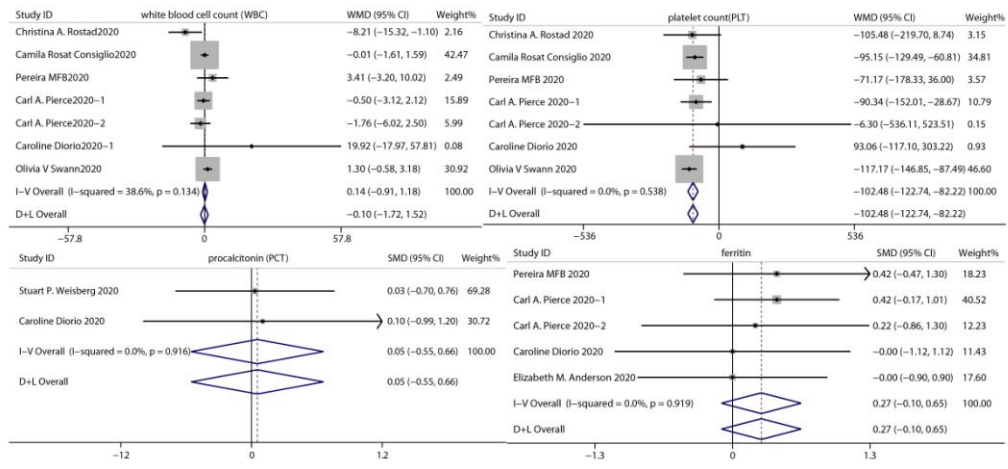
eFigure 4: forest plots of MIS-C vs. KD

eFigure 5: forest plots of severe MIS-C vs. non-severe MIS-C

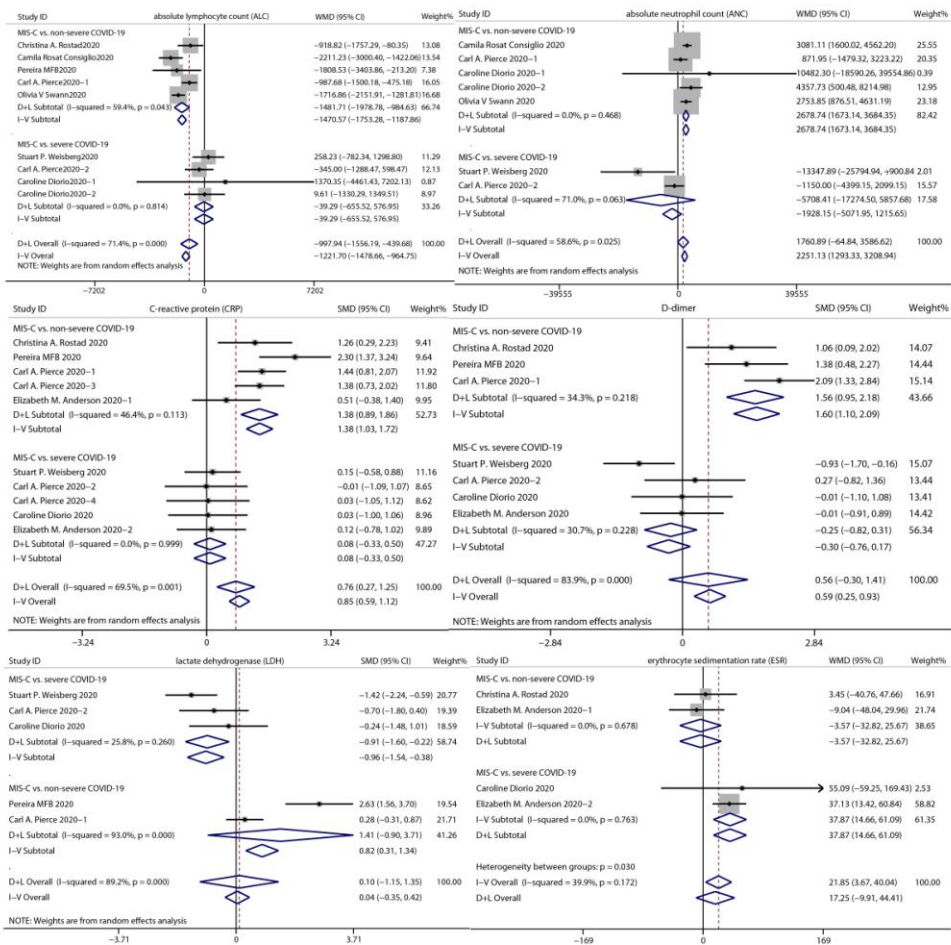
eFigure 6: forest plots of MIS-C with coronary artery abnormality vs. MIS-C without coronary artery abnormality

eFigure 7: forest plots of KD during SARS-CoV-2 epidemic vs. before SARS-CoV-2 epidemic

eTable in the Supplement



eFigure 2: forest plots of MIS-C vs. COVID-19



eFigure 3: forest plots of MIS-C vs. severe/non-severe COVID-19

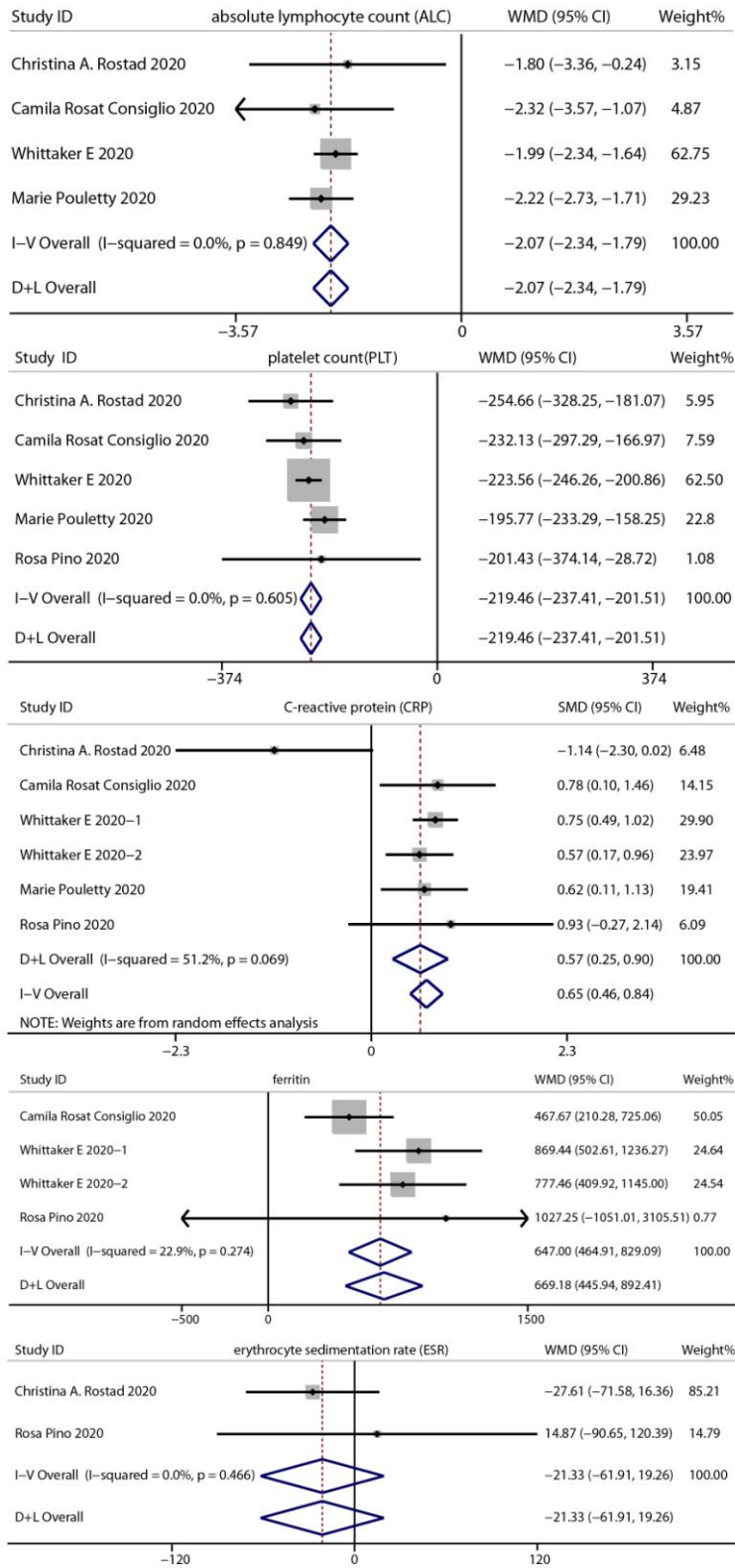


Figure 4: forest plots of MIS-C vs. KD

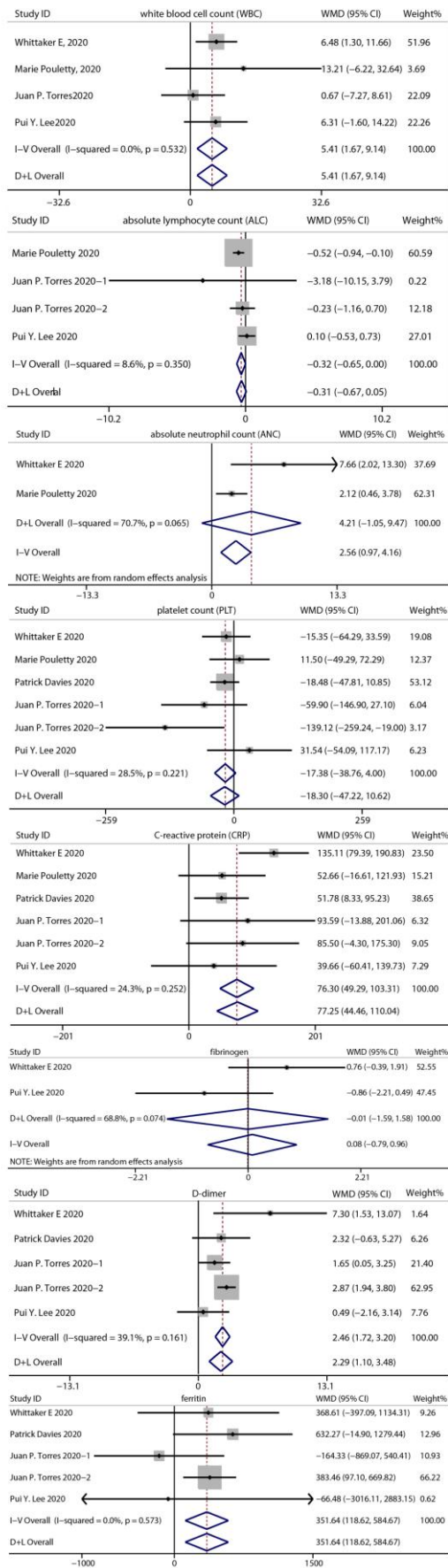
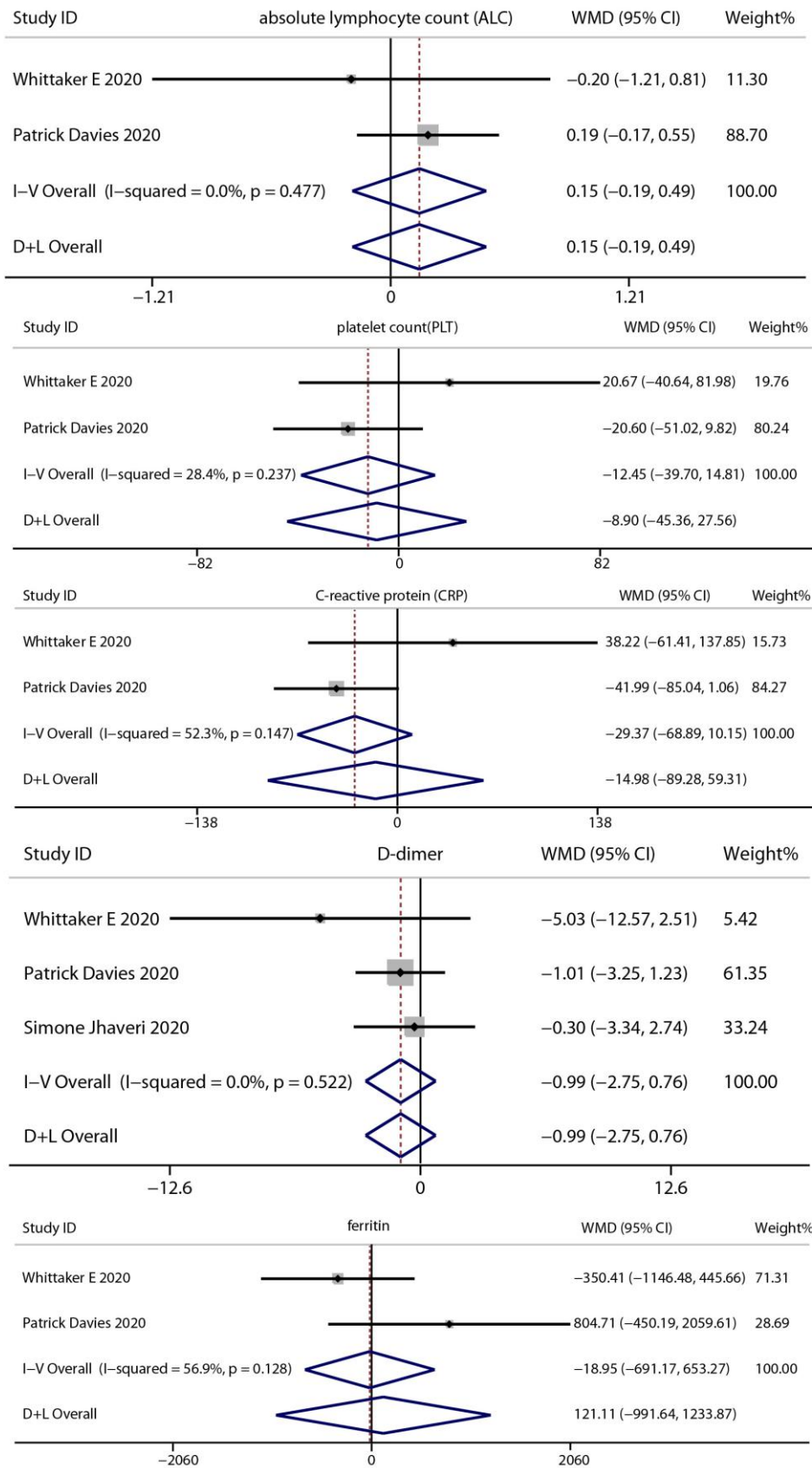
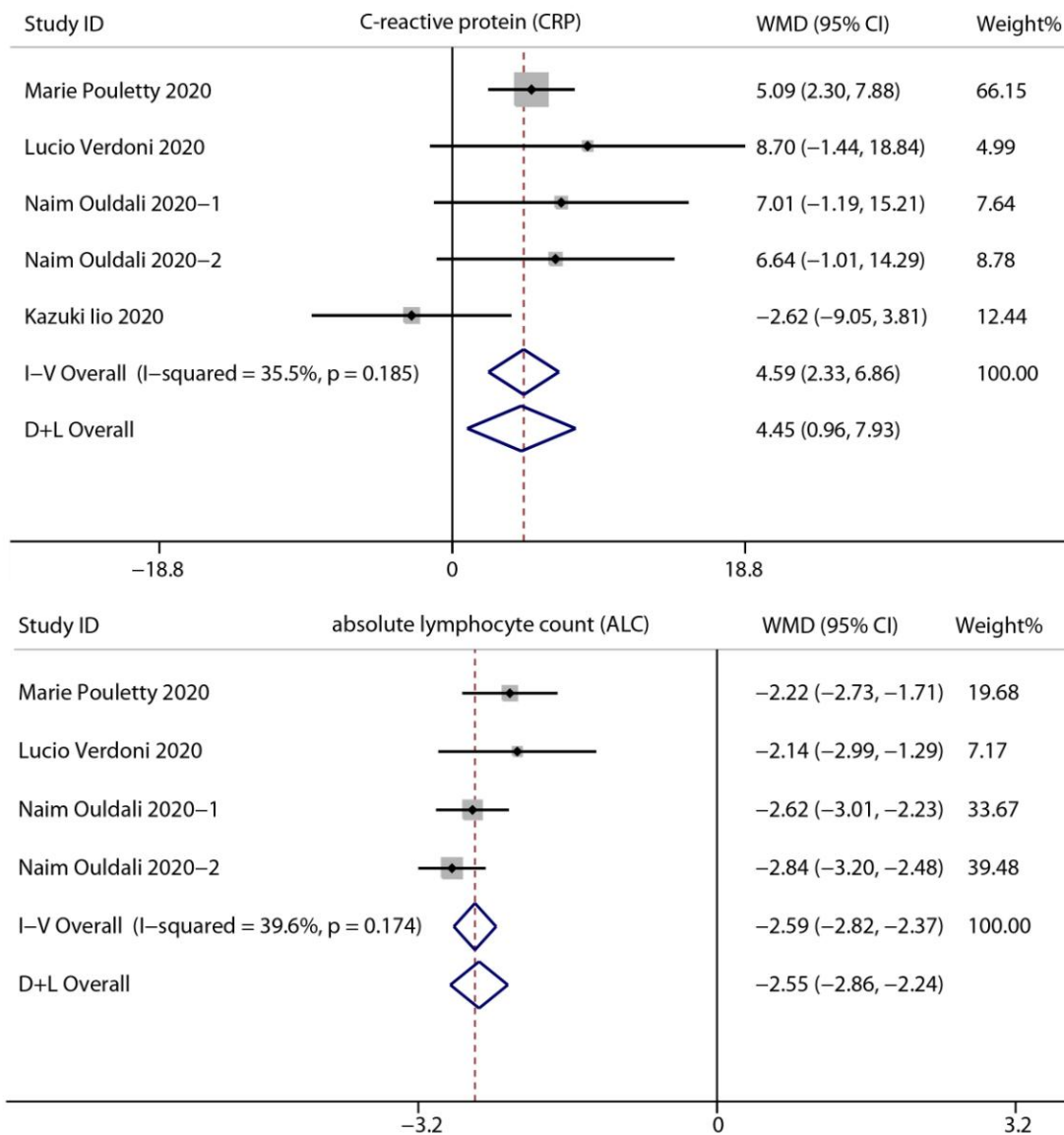


Figure 5: forest plots of severe MIS-C vs. non-severe MIS-C



eFigure 6: forest plots of MIS-C with coronary artery abnormality vs. MIS-C without coronary artery abnormality



eFigure 7: forest plots of KD during SARS-CoV-2 epidemic vs. before SARS-CoV-2 epidemic

eTable in the Supplement

Risk of bias assessment (case-control study)

Study Author/Year	Selection				Comparability	Outcome			Score
	Case definition adequacy	Representative of cases	Selection of controls	Definition of controls		Ascertainment of exposure	Same ascertainment	Non-response rate	
Pereira MFB2020	*	*		*	* *	*	*		7
Elizabeth M. Dufort 2020	*	*			* *	*	*	*	7
Naim Ouldali2020	*	*		*	*	*	*		6
Kazuki Iio2020	*	*	*	*	* *	*	*		8

Risk of bias assessment(cohort study)

Study Author/Year	Selection				Comparability	Outcome			Score
	Representativeness of the Exposed Cohort	Selection of the Non-Exposed Cohort	Ascertainment of Exposure	Demonstration That Outcome of Interest Was Not Present at Start of Study		Assessment of Outcome	Was Follow-Up Long Enough for Outcomes to Occur	Adequacy of Follow-Up of Cohorts	
Christina A. Rostad2020	*	*	*		*	*	*	*	7
Camila Rosat Consiglio 2020	*	*	*		*	*	*		6
Stuart P. Weisberg2020	*	*	*		*	*	*		6
Carl A. Pierce	*	*	*		*	*	*	*	7
Caroline Diorio2020	*	*	*	*	* *	*	*		8
Elizabeth M. Anderson 2020	*	*	*	*	*	*	*		7
Olivia V Swann2020	*	*	*	*	* *	*	*		8

0				
Whittaker E 2020	*	*	*	* * * *
Marie Pouletty 2020	*	*	*	* * * *
Patrick Davies202 0	*	*	*	* * * *
Rosa Pino2020	*	*	*	* * * *
Juan P. Torres202 0	*	*	*	* * * *
Pui Y. Lee2020	*	*	*	* * * *
Simone Jhaveri20 20	*	*	*	* * * *
L.R. Feldstein2 020	*	*	*	* * * *
Lucio Verdoni20 20	*	*	*	* * * *