

# Two *Nucleoporin98* homologous genes jointly participate in the regulation of starch degradation to repress senescence in *Arabidopsis*

**Long Xiao**

Northeast Agricultural University

**Shanshan Jiang**

Chinese Academy of Agricultural Sciences Institute of Crop Sciences

**Penghui Huang**

Institute of Crop Sciences, CAAS

**Fulu Chen**

Institute of Crop Sciences, CAAS

**Xu Wang**

Institute of Crop Sciences, CAAS

**Zhiyuan Cheng**

Institute of Crop Sciences, CAAS

**Yuchen Miao**

Henan University

**Liangyu Liu**

Capital Normal University

**Iain Searle**

The University of Adelaide

**Chunyan Liu**

Northeast Agriculture University

**Xiaoxia Wu**

Northeast Agriculture University

**Yong-Fu Fu (✉ [fufu19cn@163.com](mailto:fufu19cn@163.com))**

Institute of Crop Science, Chinese Academy of Agricultural Sciences <https://orcid.org/0000-0002-1486-0146>

**Qingshan Chen**

Northeast Agriculture University

**Xiaomei Zhang**

Institute of Crop Sciences, CAAS

**Keywords:** Nup98, Starch, Sugar, Senescence, Nuclear pore complex, Nucleoporin

**Posted Date:** April 28th, 2020

**DOI:** <https://doi.org/10.21203/rs.2.21484/v2>

**License:**  This work is licensed under a Creative Commons Attribution 4.0 International License.

[Read Full License](#)

---

**Version of Record:** A version of this preprint was published at BMC Plant Biology on June 26th, 2020. See the published version at <https://doi.org/10.1186/s12870-020-02494-1>.

# Abstract

**Background:** Starch is synthesized during the day for temporary storage in leaves and then degraded during the subsequent night to support plant growth and development. Impairment of starch degradation leads to stunted growth, even senescence and death. The nuclear pore complex is involved in many cellular processes, but its relationship with starch degradation is unclear until now. We previously identified two Nucleoporin98 (Nup98) genes (Nup98a and Nup98b) redundantly regulated flowering through CONSTANS (CO) independent pathway in *Arabidopsis thaliana*. The *nup98a-1 nup98b-1* double mutant also showed severe senescence phenotypes.

**Results:** We found that Nucleoporin 98 (Nup98) participated in the regulation of sugar metabolism in leaves and in turn is involved in senescence regulation in *Arabidopsis*. We show that Nup98a and Nup98b redundantly function in the different steps of starch degradation and the *nup98a-1 nup98b-1* double mutant accumulates more starch than wild type plants and has a severe early senescence phenotype compared to wild type plants. The expression of marker genes related to starch degradation was impaired in the *nup98a-1 nup98b-1* double mutant, and indicator genes of carbon starvation and senescence expressed earlier in the *nup98a-1 nup98b-1* double mutant than that in wild type plants, suggesting abnormality of energy metabolism was the cause of senescence of the *nup98a-1 nup98b-1* double mutant. Addition of sucrose to the growth medium can rescue early senescence phenotype of the *nup98a-1 nup98b-1* mutant.

**Conclusions:** Our results provide a line of evidence on a novel role of the nuclear pore complex in energy metabolism related to growth and development, whereas Nup98 functions in starch degradation conferring growth regulation in *Arabidopsis*.

## Background

The nuclear pore complex (NPC) is the key bridge for communication of macromolecules between the nucleus and cytoplasm and regulates gene expression [1]. NPC is built by at least 30 unique nucleoporins (Nups), which are highly conserved in eukaryotic cells [2, 3]. Nup98 is a mobile and peripheral FG (for Phe-Gly domain) nucleoporin and spans from the nucleus to cytoplasmic of the central channel of the NPC [4, 5]. *Arabidopsis thaliana* Nup98a (also known as DRACULA2, DRA2) is also found in different subcellular locations [6]. *Nup98* is involved in regulation of cargo export and import, gene expression, transcriptional memory, and multiple developmental processes in animals and yeast [4-9]. In *Arabidopsis*, *DRA2* regulates the shade avoidance syndrome [6]. In rice, the *Nup98* homolog *APIP12* (*AVRPIZ-T INTERACTING PROTEIN12*) is involved in basal resistance against the pathogen *Magnaporthe oryzae* and targeted by the *Magnaporthe* effector AvrPiz-t [10]. Recently in *Arabidopsis*, the protein-interaction between Nup98 and Nup88/MOS7 (MODIFIER OF SNC1,7) is required for plant immunity against the necrotrophic fungal pathogen *Botrytis cinerea* and mitogen-activated protein kinase signalling [11]. We found *Nup98* contributes to flowering regulation in *Arabidopsis* [12].

Senescence is an important cellular process sensing developmental and environmental cues [13]. Before death, plants remobilize resources in senescing tissues and translocate them to sink tissues to support growth and development [14-16]. To date, at least 200 genes have been identified that regulate or participate in senescence process in plants, even though we do not know when senescence starts exactly [17]. Starch is synthesized during the day in leaves and then degraded during the subsequent night to support plant growth and development. Impairment of genes functioned in different steps of starch degradation hinders plant growth at different extents [18, 19]. Sugar directly or indirectly regulates plant senescence: sugar accumulation not only triggers and accelerates, but also delays senescence [20-22]. In fact, the response to sugar and senescence of plants is in an age- or condition-dependent manner [21, 23, 24]. Within the sugar pathway, three control nodes have been identified; glucose sensor gene *HEXOKINASE 1* (*HXK1*), energy sensor genes *PROTEIN KINASE10* (*KIN10*) and *KIN11*, and *TOR* (THE TARGET OF RAPAMYCIN) kinase [22, 25-28].

Currently, the mechanism of NPC in regulation of starch degradation and senescence in plants is still unknown. However, in animals there are several studies reporting the NPC controls cell senescence through modifying chromosome structure, DNA repair and replication or cell division [29-33]. Impairment of NPCs results in dysfunction of nucleo-cytoplasm transportation [31]. Both Nup107 [34] and Tpr (TRANSLOCATED PROMOTER REGION) [35, 36] have been linked to cancer cell proliferation and cellular senescence in aging cells. Another Nup98-interacting protein Nup93 was shown to be oxidatively damaged [29].

In this study, we focus on two *Nup98* homologous genes, *Nup98a* and *Nup98b*, in *Arabidopsis thaliana*. Single mutants of *Arabidopsis*, *nup98a* or *nup98b*, have no obvious flowering and senescence phenotypes. However, the double mutant, *nup98a-1 nup98b-1*, showed a significant early-senescence phenotype. Gene expression analysis demonstrated that *Nup98a* and *Nup98b* participate in starch degradation conferring growth regulation. Further analysis indicated the early-senescence may result from a defect in the initial steps of starch degradation resulting in dysfunction in energy supply. Interestingly, the early senescence phenotype in the double mutant could be rescued by addition of sugar in the growth media. Our data suggests that *Nup98a* and *Nup98b* function redundantly in regulation of starch degradation, which contribute to normal growth and development in *Arabidopsis*.

## Results

### *Nup98* mutation results in early senescence in *Arabidopsis thaliana*

Nup98 is a highly conserved nuclear pore protein in eukaryotes. In *Arabidopsis thaliana*, there are two homologs of the mammalian *Nucleoporin98*, *Nup98a* (At1g10390) and *Nup98b* (At1g59660), and they share high conserved amino acid sequence in the Phe-Gly (FG)-repeats and autoproteolytic domain (APD, Supplementary Fig. 1) [3, 6]. *Nup98a* was previously reported as *DRACULA2* (*DRA2*), a regulator of the shade avoidance syndrome (SAS) in *Arabidopsis* [6] and immune responses to a rice fungal pathogen [11]. To investigate *Nup98* functions in plant development, we screened mutants of *nup98a* (SALK\_080083, SALK\_090744, SALK\_023493, SALK\_103803, SALK\_015016) and *nup98b* (CS803848 and GABI\_288A08) ordered from ABRC and GABI T-DNA mutant center, respectively. Homozygous lines were isolated for the following insertional mutants of SALK\_103803, SALK\_015016, GABI\_288A08, and among them SALK\_103803 and GABI\_288A08 were the mutants reported by Parry [9]. The T-DNAs in these homozygous mutants are inserted in the coding regions (Fig. 1A) and RT-PCR results demonstrated that these mutants were null alleles (Fig. 1B) consistent with the Parry's results [9]. We did not observe any obvious phenotypes on flowering and senescence in either the *nup98a* or *nup98b* single mutants when compared to wild type plants under long-day photoperiod conditions (Fig. 1C), as previous studies showed [9]. As *Nup98a* and *Nup98b* share high conserved amino acid sequences (Supplementary Fig. 1), we tested the hypothesis that *Nup98a* and *Nup98b* acted redundantly with the *nup98a nup98b* double mutants we made by crossing *nup98a* to *nup98b*. Strikingly, both double mutants, *nup98a-1 nup98b-1* and *nup98a-2 nup98b-1*, displayed similar early senescence phenotypes when compared to wild type plants (Fig. 1C and 1D). Also, the double mutant plants had additional phenotypes, such as smaller inflorescences, flowers, siliques and short stature and severe sterility when compared to wild type plants (Supplementary Fig. 2 and 3). We recently reported that the *nup98a-1 nup98b-1* double mutants had early flowering phenotype. As expected, the mutated phenotypes observed in the double mutant plants were rescued by expressing only *Nup98b* (Fig. 1E). Our results demonstrate that *Nup98a* and *Nup98b* act redundantly.

To investigate if senescence phenotype was specific to the *nup98a-1 nup98b-1* mutant, we selected another three nucleoporin mutants, *nup96-1*, *nup160-1*, and *nup107-1*, which showed flowering phenotypes in our previous report [37], to analyze the effect of other nuclear pore components on senescence. To our surprise, there is no early senescence phenotypes observed in these mutants (Supplementary Fig. 4), suggesting that some of nucleoporins may not be involved in the regulation of senescence and *Nup98* likely had specific functions on this developmental event.

### ***Nup98* gene may be involved at multiple pathways of senescence initiation**

Because the early senescence observed in the *nup98a-1 nup98b-1* double mutant could be a secondary effect of altered development, we further explored the role of *Nup98a* and *Nup98b* in senescence control. To date, at least 200 genes have been identified as regulating or participating in senescence in plants [17]. We investigated and summarized literatures in Supplementary Fig. 5 focusing on the main genes,

which showed that various endogenous and environmental cues, such as different hormones, sugar signalling, light and photoperiod conditions, and multiple stresses, trigger plant senescence and that many genes regulate senescence in multiple cross-talking pathways. To identify the potential link to early senescence, we measured mRNA abundance of important senescence-associated genes in different pathways in the *nup98a-1 nup98b-1* double mutant plants (Supplementary Fig. 5) at ZT0 (Zeitgeber 0, the time point of light on) and ZT16 (the time point of light off) in plants grown under long day conditions by real time quantitative PCR (RT-qPCR). As shown in Fig. 2, many genes tested had different transcript abundances in the *nup98a-1 nup98b-1* mutant when compared to wild type plants, although different patterns were observed. In the first category, *WRKY53* (*WRKY DNA-BINDING PROTEIN53*), *SAG13* (*SENESCENCE-ASSOCIATED GENE13*), *WRKY6*, *NAC1* (*NAM, ATAF, and CUC*) and *NAC2* displayed higher transcript abundances at both ZT0 and ZT16 (Fig. 2A), suggesting that genes of stress (*WRKY53*, *WRKY6*, and *NAC1*) and SA (*WRKY53*, *WRKY6*, and *NAC2*) pathways were related to the *nup98a-1 nup98b-1* double mutant senescence phenotypes. In the second category, *SAG12*, *NAP* (*NAC DOMAIN CONTAINING PROTEIN*), *SAG2* and *CAT1* (*CATALASE1*), also genes in stress and SA pathways, were only increased at either ZT0 or ZT16 (Fig. 2B). In contrast, in the third category, *SAUR36* (*SMALL AUXIN UPREGULATED36*), *WRKY70*, *ARP4* (*ACTIN-RELATED PROTEIN4*), *SEN1* (*SPLICING ENDONUCLEASE1*), and *COI1* (*CORONATINE INSENSITIVE1*) were decreased in abundance at either ZT0 and/or ZT16 (Fig. 2C), indicating that auxin (*SAUR36*) and jasmonate (*COI1*) may be negatively related to the *nup98* senescence phenotypes. The abundance of *AGL15* (*AGAMOUS-LIKE15*), *EBP1* (*ERBB-3 BINDING PROTEIN1*), *RPS6a* (*RIBOSOMAL PROTEIN6a*), and *NPR1* (*NONEXPRESSOR OF PR-GENES1*) had opposite changes at ZT0 and ZT16 (Fig. 2D), suggesting the function of these genes on *Nup98* was dependent on circadian rhythm.

This expression profile suggested that there were at least three characteristics of senescence in the *nup98* mutant. Firstly, several pathways, mainly stress and SA pathways, were involved in regulation of senescence processes in the *nup98a-1 nup98b-1* double mutant. Secondly, different genes functioned in their own special modes, positively or negatively at different phases (morning or afternoon phases). Thirdly, some of genes, such as *WRKY53*, *WRKY6*, *NAP1*, and *SAG2*, may play roles in multiple pathways. The results indicated that the senescence phenotypes of the *nup98* double mutant were resulted from multiple pathways. Many genes showed circadian expression patterns, consistent with our previous report that *Nup98* genes participated in regulation circadian clock [12].

### Starch metabolism is impaired in the *nup98a-1 nup98b-1* double mutant

During photosynthesis, glucose is synthesized and stored as starch, which is degraded at night. Starch synthesis, degradation and metabolism pathways involve a number of genes in plants (Supplementary Fig. 6) [18, 19]. Firstly, we checked starch homeostasis in the *nup98a-1 nup98b-1* double mutant plants that were grown under 12 h light/12 h dark conditions (at ZT0, dawn, and ZT12, dusk) (Fig. 3). All plants

accumulated starch at dusk, however, double mutant plants accumulated much more starch when compared to wild type plants as determined by iodine staining (Fig. 3A) and starch quantitative assay (Fig. 3B). The more intense signals in older, 21 and 28-day, double mutant leaves may be a consequence of starch accumulating over time. Therefore, the double mutant displayed much more starch not only at dawn but also at dusk when compared to wild type plants and this was much clearer in 14 and 21-day old seedlings (Fig. 3A and 3B). Together, these results suggested that starch metabolism was impaired in the *nup98a-1 nup98b-1* double mutant.

We measured the transcript abundance of genes involved in starch metabolism [18] by quantitative RT-PCR (Fig. 4) and found that many genes had significantly lower abundant transcripts at least one time point in the double mutant when compared to wild type plants. These genes encoded enzymes for the degradation of starch not only in the early steps of starch degradation in chloroplasts [18], such as *GWD1* ( $\alpha$ -GLUCAN WATER, DIKINASE1; or *STARCH EXCESS1*, *SEX1*),  $\beta$ -*BAM1* ( $\beta$ -AMYLASE1), *BAM3*, *BAM5*, *BAM6*, *BAM7*, *BAM8*, *SEX4*, and *LSF1* (*LIKE SEX FOUR1*), but also in the later steps of starch degradation, such as *LDA* (*LIMIT-DEXTRINASE*), *AMY1* ( $\alpha$ -AMYLASE) and *AMY2* (), *DPE1* (*DISPROPORTIONING ENZYME*) and *DPE2*, *PHS1* ( $\alpha$ -GLUCAN PHOSPHORYLASE) and *PHS2*. Time-dependent low-expression of these genes suggested they were in the control of circadian clock, since *Nup98* is involved in circadian regulation in *Arabidopsis* [12]. These genes function at different steps [18]. *GWD1* is  $\alpha$ -glucan water, dikinase and phosphorylates glucosyl residues of amylopectin at the C-6 position, the initiation step for starch degradation. *BAMs* are a family of  $\beta$ -amylase breaking down the  $\alpha$ -1,4-linked glucose chains. *LSF1* and *SEX4* releases phosphate bound at C-6 and C-3 of glucosyl residues. Both *ISA* (*ISOAMYLASE 3*) and *LDA* (*LIMIT-DEXTRINASE*) hydrolyze  $\alpha$ -1,6 branch points but show different substrate specificities. *AMYs* act on  $\alpha$ -1,4-linkages releasing linear  $\alpha$ -1,4-linked oligosaccharides and branched  $\alpha$ -1,4- and  $\alpha$ -1,6-linked oligosaccharides. *DPEs* (*DISPROPORTIONATING ENZYMEs*) Transfer glucose/ $\alpha$ -1,4-linked glucan moiety from a donor glucan to an acceptor, releasing the non-reducing end glucose/glucan moiety. *PHSs* ( $\alpha$ -GLUCAN PHOSPHORYLASEs) acts on the non-reducing end of  $\alpha$ -1,4-linked glucose. Lower abundance of these genes would be expected to result in a starch-excess phenotype in the *nup98a-1 nup98b-1* double mutant (Fig. 3) as these enzyme mutants [18]. We also found that there were some genes, which did not show a significant change in mRNA abundance. These genes included *GWD2*, *GWD3*, *ISA3* (*ISOAMYLASE3*) and *AMY3*, suggesting the effect of *Nup98a/b* on starch metabolism was limited to some specific enzymes.

We also measured the abundance of genes related to photosynthesis and sugar metabolism by RT-qPCR in the *nup98a-1 nup98b-1* double mutant and wild type plants (Supplementary Fig. 7). In terms of photosynthesis related genes, the decrease of mRNA abundance of *LHCA* (*PHOTOSYSTEM I LIGHT HARVESTING COMPLEX GENE A*) and *LHCB* (*PHOTOSYSTEM I LIGHT HARVESTING COMPLEX GENE B*) was observed in the *nup98a-1 nup98b-1* double mutant at different time points, e.g., *LHCA1/2* and



*LHCB1.1* at ZT0 and *LHCA1* and *LHCB1.4* at ZT16. We also observed the decrease of mRNA abundances of *KIN10* and *KIN11*, two sugar signaling genes in the double mutant when compared to wild type plants. Both genes delay plant senescence [22, 27, 28] and therefore the reduced abundance may be associated with earlier senescence (Supplementary Fig. 5). We also observed slightly-increased mRNA abundance of *HXX1* at dusk (ZT16) and this may contribute to earlier senescence via the cytokinin signaling pathway [25]. Unexpectedly, mRNA abundance of *TPS1*, a senescence activator [21], was reduced in the *nup98a-1 nup98b-1* double mutant compared to wild type plants, suggesting that T6P (trehalose-6-phosphate) was not related to senescence of the *nup98a-1 nup98b-1* double mutant. The results indicated that starch synthesis and sugar signalling were impaired in the double mutant.

### **Exogenous sugar rescues the early senescence in the *nup98a-1 nup98b-1* double mutant**

Based on our results above, we interpreted that the carbon or energy supply was impaired in *nup98a-1 nup98b-1* double mutant plants. We tested the idea by supplying exogenous carbon in the form of sucrose in growing medium to see if the early senescence phenotype in the *nup98a-1 nup98b-1* double mutant plants could be rescued. Our results showed that sucrose and MS nutrients can support the double mutant plants growing well even though they were weak compared to wild type plants (Fig. 5). Both plants can complete their life cycles on medium containing agarose supplement with sucrose and nutrients. Then, we allowed double mutant and control plants grown in MS medium until inflorescence emergence and then transferred them to soil. As expected, the double mutant grew well as wild type plants did on MS medium before transplanting (Supplementary Fig. 8). However, after transferring to soil, senescence symptoms on mutant plants' leaves quickly appear at day 6, and the mutant plants wilted at day 30 (Supplementary Fig. 8). If seeds were sown on medium containing only MS nutrients or sucrose, both wild type plants and the *nup98* mutant cannot survive as plants grow agarose medium without any supplements (Supplementary Fig. 9).

To rule out the potential effect of soil on senescence phenotypes observed above, we carried out another experiment to test if exogenous macro and micronutrients would complement the phenotypes observed in the mutant by continuously growing plants on medium at different strengths of sucrose and macro- and micro-nutrients (Supplementary Fig. 9). To our surprise, not only did sucrose suppress the early senescence phenotype in the double mutant but also macro- and micro-nutrients in the presence of sucrose. The lower strength nutrients ( $\frac{1}{2}$  MS) enhanced the lower sucrose (1.5%) effect on suppressing senescence, suggesting that both energy supply and nutrients metabolism were impaired in the *nup98a-1 nup98b-1* double mutant. We also tested if sucrose could rescue the *nup98a-1 nup98b-1* double mutant phenotype in soil. However, such an experiment failed and both the *nup98a-1 nup98b-1* double mutant and wild type seedlings died, because sucrose enhanced pathogen growing (Supplementary Fig. 10).



## Misexpression of starvation and senescence marker genes in the *nup98a-1 nup98b-1* double mutant

Results above implied that the *nup98a-1 nup98b-1* double mutant may suffer from sugar starvation or/and senescence. Next, we asked when starvation or senescence initiated in the *nup98a-1 nup98b-1* double mutant. *DORMANCY-ASSOCIATED PROTEIN-LIKE 1* (*DRM1/DYL 1*, At1g28330) and *DARK INDUCIBLE 6* (*DIN6*, At3g47340) [38, 39] are two well-studied sugar starvation gene markers, whereas *SAG12* (At5g45890) and *WRKY53* (At4g23810) are well-characterized senescence markers [40-42]. Autophagy is an important event occurring during sugar starvation and senescence [38, 43, 44], and *AUTOPHAGY8a* (*ATG8a*, At4g21980) and *ATG8e* (At2g45170) are two typical molecular indicators for autophagy in plants [45]. Therefore, we investigated expression changes of these genes in the *nup98a-1 nup98b-1* double mutant compared to that in wild type plants, and the results showed that they had different changes in a time- and developmental-dependent mode (Fig. 6). In the double mutant, *DRM1* had significantly higher expression at ZT0, but lower at ZT12 from very early stage (day 5 after germination) (Fig. 6A). *DIN* is a light-repressed and dark-induced gene [46], and its high level of expression at ZT0 in the *nup98a-1 nup98b-1* double mutant became obvious at day 15, but at ZT12 higher abundance appeared earlier from day 10 (Fig. 6A). Compared to wild type plants, the senescence marker *WRKY53* in the *nup98a-1 nup98b-1* double mutant expressed higher at the early stage when *DRM1* expression was in disorder (day 5) (Fig. 6B). *SAG12* is a developmental controlled indicator for the later stage of senescence [47, 48]. We found that there was no much difference of *SAG12* expression in the early stage (day 5) between the *nup98a-1 nup98b-1* double mutant and wild type plants. However, *SAG12* had a higher expression level in the *nup98a-1 nup98b-1* double mutant at both ZT0 and ZT12 from day 10 (Fig. 6B). In the meanwhile, the two markers of autophagy, *ATG8a* and *ATG8e*, also had higher abundance of mRNA in most of samples of the double mutant from day 10. Taken together, our results showed that the *nup98a-1 nup98b-1* double mutant appeared the sign of energy starvation, at least at molecular level, in early developmental stage when plants did not display visible senescence phenotypes. And these expression changes may have circadian and developmental characters. A previous report shows that different sugars (such as sucrose, glucose, and fructose) have different effects on the regulation of senescence [39]. It may be a cue to study the function of *Nup98* on senescence regulation.

## Nup98 proteins mainly localize to the nuclear membrane and nucleoplasm

Nup98 is one of the mobile and peripheral FG (Phe-Gly domain) nucleoporins and is located at both the nuclear and cytoplasmic sides of the NPC central channel [4, 5]. *Arabidopsis* Nup98a (also known as DRA2) is also found distributing in different subcellular compartments [6]. We constructed transgenic *Arabidopsis* plants expressing *35S::GFP:Nup98a* and *35S::GFP:Nup98b* and analyzed the subcellular localization of both translation fusion proteins. Not surprisingly, both proteins were distributed in the cytoplasm, the nucleoplasm and at the nuclear periphery (Fig. 7). We also observed no significant difference in the subcellular distribution of Nup98a and Nup98b and this is consistent with our

observations of genetic redundancy. In conclusion, our combined results demonstrated that Nup98b proteins localized at both the nucleus and cytoplasm as Nup98a proteins [6] and their homologs in other organisms do [4, 5].

## Discussion

Senescence is a physiological process during the plant life cycle, eventually leading to cell and tissue disintegration and death in plants. In such a physiological process, various nutrients are redistributed from senescing organs, such as leaves, to reproductive organs, for example seeds [13]. However, irregular or premature senescence could lead to organ failure or even whole plant death [49]. Fine tuning senescence could benefit plants by avoiding the deleterious effects of abiotic stresses and thereby lead to an optimal reproductive outcome. A significant number of factors including hormones, developmental age, abiotic stress and light participate in regulation of plant senescence [22, 23, 50-59]. While these factors play important and clear roles in plant senescence, the role of sugar is unclear as different groups have published opposing results [20-22, 60]. The NPC, is an important gatekeeper for both macromolecular transportation between the nucleus and cytoplasm and gene transcription, and therefore plays an important role in different plant developmental processes [29-33]. Our study provides some additional insights into the plant senescence field as we found that the NPC participates in senescence regulation. Our investigation confirmed that *Nup98* genes participated in starch degradation, then conferring senescence initiation in *Arabidopsis*.

Obviously, *Nup98a* and *Nup98b* function redundantly in senescence regulation in *Arabidopsis*, because the *nup98* single mutants have no obvious senescence phenotypes (Fig. 1), even though a previous report showing longer hypocotyls in the *nup98a* mutant [6]. Similar protein sequences (Fig. S1) and subcellular-localization between the Nup98a and Nup98b proteins (Fig. 7) support this hypothesis. Such a senescence phenotype is likely specific to mutation of *Nup98* genes, because other nucleoporin mutants detected have no similar phenotypes (Fig. S4). However, it is suggested to check more mutants of other nucleoporins is helpful to confirm the specificity of *Nup98* functions on senescence regulation. Molecular data evidence that the *Nup98* genes regulate plant senescence through multiple pathways, for example, ethylene, salicylic acid, ABA, cytokinin, and stress pathways, because the marker genes in these pathways, such as *SAG12*, *NAP1*, *WRAY53*, *WRKY6*, *WRKY70*, *NAC1*, *NAC2* and *HXK1*, have significant changes in gene expression (Fig. 2). Additionally, tThese genes may play a role in a temporal (circadian) manner as their significant changes only at a specific time point, at dawn or dusk (Fig.2). We recently found that the expression level of *ELF3* and other clock genes significantly reduced in the *nup98a-1 nup98b-1* double mutant [12]. Therefore, circadian clock may be involved in the network of senescence regulation by the *Nup98* genes.

Sugar is confirmed as an important signal in the control of plant growth and development [61]. Many important genes in sugar signaling pathways (*TOR*, *KIN10*, *KIN11*, *TPS1*, *SnRK1*) (Fig. S7) and carbon starvation genes (*DRM1* and *DIN6*) (Fig. 6) were all mis-regulated in *nup98a-1 nup98b-1* double mutant plants. What's more, sucrose could rescue the senescence phenotype of the *nup98a-1 nup98b-1* double mutant (Fig. 5), indicating that sugar availability was hindered in the double mutant and the main reason for initiation of senescence in this double mutant.

In plants, sugar is derived from photosynthesis and stored as starch. Starch accumulates in the chloroplast during the day and is degraded at night [18, 19]. Our evidence showed the *nup98a-1 nup98b-1* double mutant accumulated much higher levels of starch, which was unlikely due to higher photosynthesis efficiency (Fig. S7) but impaired starch degradation (Fig.3). This was evidenced by 1) lower expression levels of genes related to photosynthesis (*LHCA1*, *LHCA2*, *LHCB1.1* and *LHCB1.4*), which would lead to reduced starch synthesis in the double mutant (Fig. S7); 2) lower expression of starch degradation genes (Fig. 4) embracing many steps of starch degradation (Fig. S6) [18], that would lead to starch accumulation in the *nup98a-1 nup98b-1* double mutant. A gradual accumulation of starch over time was also contributed by a partial reduction in gene expression in degradation pathways. Impairment of starch degradation directly lead to sugar starvation, and subsequently stunted growth, senescence, finally death.

Beyond this, *Nup98a* and *Nup98b* may also have functions in other nutrient metabolism as the concentration of nutrients in the growth medium had a significantly impact on the growth and senescence in *nup98a-1 nup98b-1* double mutants (Fig. 5). In this case, components (sugar or MS) in growth medium should be taken into consideration, especially for senescence study in future.

Previous studies show that the circadian clock regulate starch metabolism in plants [62, 63]. *EARLY FLOWERING3 (ELF3)* positively regulates starch accumulation and degradation of starch was significantly slower in *elf3* mutant plants than in the corresponding wild type plants [64]. *ELF3* and other clock evening genes (*ELF4* and *LUX ARRHYTHMO*) also affect leaf senescence [65, 66]. Many genes studied here showed time point-dependent changes in gene expression (Fig. 2, 4 and 6). We previously showed that the expression of many clock genes significantly changed in the *nup98a-1 nup98b-1* double mutant [12]. Taken together, clock genes may participate in signalling pathway of *Nup98a/Nup98b* regulating starch degradation and senescence in *Arabidopsis*.

We just reported that the *nup98a-1 nup98b-1 ft-10* triple mutant displayed the late flowering character as the *ft-10* mutant but maintained early senescence phenotypes as the *nup98a-1 nup98b-1* double mutant

[12], suggesting that *Nup98a* and *Nup98b* were involved in regulation of both flowering and senescence, but two developmental processes individually regulated by *Nup98a* and *Nup98b*.

It is obvious that the function of *Nup98* in senescence regulation are indirect. Mutation of *Nup98* genes may lead sequentially to dysfunction of circadian clock, hinderance of starch degradation, sugar starvation, and plant senescence. In the future, it will be interested to determine how *Nup98* controls the function of genes related to starch degradation mediated by circadian clock.

It should be pointed that even though *Nup98a* and *Nup98b* function redundantly in regulation of flowering and senescence, they may also play individually functions in other developmental processes, because the *nup98a* single mutant (*dra2*) displays shade avoidance [6].

## Conclusion

Our findings identified a novel function of nuclear pore complex on starch metabolism and verified that *Nup98a* and *Nup98b* overlappingly controlled starch degradation and indirectly regulate senescence in *Arabidopsis*.

## Methods

### Plant materials and growth conditions

Seeds of the T-DNA insertion mutants of *nup98a* (SALK\_080083, SALK\_090744, SALK\_023493, SALK\_103803, and SALK\_015016) and *nup98b* (CS803848 and GABI\_288A08) were ordered from ABRC and GABI T-DNA mutant center, respectively. Homozygous screening was according to the protocol provided by SALK (<http://signal.salk.edu/>). All mutants were identified by Dr. Long Xiao. *Arabidopsis thaliana* Columbia wild type plants and its derived mutants were grown under long day (16 h/8 h, light/dark, except where indicated in the text) conditions, with 100  $\mu\text{mol m}^{-2} \text{s}^{-1}$  lighting provided by fluorescent lamps. Plants were grown on soil in pots with a diameter of 10 cm or on medium in petri dishes containing different strengths of sucrose and MS (Murashige & Skoog) nutrients (Sigma, #M5524) as indicated in the text.

### Gene and promoter cloning, plasmid construction

Standard GATEWAY (Invitrogen) methods were employed for cloning and plasmid construction. Most vectors are made by our lab [67]. The full-length of *Nup98a* and *Nup98b* open reading frames were PCR amplified with specific primers (Table S1), and then cloned into Fu30 [67] which contains N-terminal GFP

marker. The gene entry vectors (Fu30-*GFP:Nup98a* or Fu30-*GFP:Nup98b*), the 35S promoter entry vector (Fu76-35S) and the binary vector (Fu39-2) [67] were applied to LR reaction (Invitrogen). The resulting Fu39-2-35S:*GFP:Nup98a* and Fu39-2-35S:*GFP:Nup98b* binary vectors were introduced into *Agrobacterium tumefaciens* strain GV3101 pMP90RK, and then transformed into *A. thaliana* using the floral dipping method [68]. Homozygous transgenic plants were used for phenotypic and molecular characterization.

### **Semi-quantitative PCR, quantitative real time RT-PCR, and subcellular localization**

The whole seedlings were harvested at ZT0 (the time point of light on) and ZT16 (the time point of light off) at day 14 after germination. RNA preparation, cDNA synthesis and both quantitative real-time and semi-quantitative RT-PCRs were carried out following Xiao et al. [69], except for the use of *At4g34270* as a reference gene in triplicate [70, 71]. All gene accession numbers and relevant primer sequences are listed in Table S1. GFP fluorescent signals were visualized by confocal microscopy, and propidium iodide (PI) is for cell wall staining [67].

### **Starch staining and quantitative analysis**

Starch in leaves of 14-, 21-, and 28-day-old wild type plants and mutant *Arabidopsis* plants were stained with iodine [72]. Plants were grown under a 12-h-light/12-h-dark photoperiod, harvested at ZT0 (the time point of light on) and ZT12 (the time point of light off), decolorized with hot 80% (v/v) ethanol, and stained with iodine-potassium iodide solution. Representative plants were shown. Starch quantitative analysis was carried out according to the instruction of Starch Determination Kit (Solarbio, Beijing, Cat#BC0700) on Spectrophotometer (RAYLEIGH, VIS-7220N; Beijing Beifen-Ruili Analytical Instruments (Group) Co., Ltd) with standard curve method, which was generated with different concentration of glucose (0.2, 0.1, 0.05, 0.025, 0.0125, 0.00625, 0.003125, 0.00156 mg/mL).

### **Statistical analysis**

Each experiment has at least three biological replicates and got similar results. For photographs, we selected one representative plant to make figures. For digital statistical analysis, all data were analyzed and determined using SPSS software package (\*P < 0.05, \*\*P < 0.01, and \*\*\*P < 0.001 compared to the control). Error bars indicate  $\pm$  SD of the mean.

## **Additional File Information**

Additional file 1: Supplementary Table 1. Primers used in this study.

Additional file 2: Figure S1. Protein domains in Nup98a and Nup98b of *Arabidopsis thaliana*.

Additional file 3: Figure S2. The *nup98a1 nup98b1* double mutant showed pleiotropic defeat in various organs.

Additional file 4: Figure S3. The *nup98a1 nup98b1* double mutant showed senescence and sterility phenotype.

Additional file 5: Figure S4. Senescence phenotypes were specific to the *nup98a1 nup98b1* double mutant compared to mutants of other nucleoporins.

Additional file 6: Figure S5. Molecular network of senescence initiation in plants.

Additional file 7: Figure S6. The simple pathway of starch degradation in chloroplast.

Additional file 8: Figure S7. The expression of genes related to photosynthesis and sugar metabolism are altered in the *nup98a1 nup98b1* double mutant.

Additional file 9: Figure S8. Exogenous sucrose reduces early onset senescence in the *nup98a1 nup98b1* double mutant plants.

Additional file 10: Figure S9. Time course analysis of the *nup98a1 nup98b1* double mutant compared to WT grown on different mediums.

Additional file 11: Figure S10 Sucrose enhanced pathogens growing, that polluted and killed seedlings.

## Abbreviations

NPC, nuclear pore complex, Nup, nucleoporin; CO, CONSTANS; ABA, abscisic acid; ABI, ABA INSENSITIVE; ACS, aminocyclopropane-1-carboxylate (ACC) synthase; AGL15, AGAMOUS-LIKE 15; AHK, Arabidopsis histidine kinase; AHP, Arabidopsis thaliana histidine phosphotransfer proteins; AMY3, alpha-amylase-like 3; APD, autoproteolytic domain; ARF, auxin response factor; ARR, Arabidopsis response regulator; C2H4, ethylene ; ATG8, autophagy8; BAM, beta-amylase; CAT, catalase; CK, cytokinin; COI1, coronatine insensitive1; CWINV, cell wall invertase; DIN6, dark inducible6; DRM1/DYL1, dormancy-associated protein-like1; DPE, disproportionating enzyme; EBP1, erbb-3 binding protein; EEL, enhanced em level; EIN, ETHYLENE INSENSITIVE; ELF, EARLY FLOWERING; ETR, ETHYLENE RESPONSIVE; G6P, 6-phosphoric acid glucose; GLK, GOLDEN 2-LIKE TRANSCRIPTION FACTOR; GWD1, α-glucan water, dikinase; HXK1, hexokinase1; ISA3, iso-amylase3; KIN, PROTEIN KINASE; LDA, limit-dextrinase; LHCA, PHOTOSYSTEM I LIGHT HARVESTING COMPLEX GENE A; LHCB, PHOTOSYSTEM I LIGHT HARVESTING COMPLEX GENE B; LSF1, like sex four1; N, nitrogen; NAC, NAM, ATAF, AND CUC; NAP, NAC-LIKE PROTEIN; NPR1, NONEXPRESSER OF PR GENES 1; NYC, NONYELLOW COLORING; ORE, ORESARA; PHS, α-glucan phosphorylase; PHYB, PHYTOCHROME B; PIF, PHYTOCHROME INTERACTING FACTOR; PYR/PYL/RCAR, PYRABACTIN RESISTANCE/PYR1-LIKE ORREGULATORY COMPONENT OF ABA RECEPTOR; RPS6A, RIBOSOMAL PROTEIN S6A; SAG, SENESCENCE-ASSOCIATED GENE; SAS, SHADE AVOIDANCE SYNDROME, SAUR, SMALL AUXIN UPREGULATED; SAUR36, SMALL AUXIN UPREGULATED; SEX4,

STARCH EXCESS 4; SGR, STAYGREEN; T6P, trehalose-6-phosphate; TOR, TARGET OF RAPAMYCIN; TPS1, trehalose-6-phosphate synthase1; WRKY, WRKY DNA-BINDING PROTEIN;

## **Declarations**

### **Acknowledgments**

We thank all friends and colleagues who help us but are not included in the author list.

### **Author Contributions**

Conceptualization, Y.-F.F. and X.Z.; Methodology, L.X. and Y.-F.F.; Investigation, L.X., F.C., S.J., Z.C., P.H., Y.M., C.L., and L.L.; Formal analysis, L.X., F.C., X.W., and Q.C.; Visualization, L.X. and Y.-F.F.; Writing – Original Draft, Y.-F.F., and Q.C. Writing – Review & Editing, I.S. and Y.-F.F.; Funding Acquisition, Y.-F.F. and X.Z.; Project administration, Y.-F.F. and X.Z.; Resources, X.Z., Y.M., X.W., and Q.C; Supervision, Y.-F.F. All Authors read and approved the manuscript.

### **Funding**

This research was supported by National Natural Science Foundation of China (Grant No. 31571411 and 31370324), CAAS-Innovation Team Project, Australian Research Council Future Fellowship (FT130100525) and the Basal Research Fund of CAAS (Y2017CG25). The funders were not involved in the experimental design of the study, data collection, analysis and interpretation, and in writing the manuscript.

### **Availability of data and materials**

All data generated or analyzed during this study are included in this published article and its supplementary information files.

### **Ethics approval and consent to participate**

Not applicable.

### **Consent to publish**

All Authors read and approved the manuscript.

### **Plant specimens**

Not applicable.

### **Availability of data and materials**



All data generated or analyzed during this study are included in this published article (and its Supplementary Information files).

## Competing Interests

The authors declare no competing interests.

## References

1. Weis K: **Regulating access to the genome: nucleocytoplasmic transport throughout the cell cycle.** *Cell* 2003, **112**(4):441-451.
2. Strambio-De-Castillia C, Niepel M, Rout MP: **The nuclear pore complex: bridging nuclear transport and gene regulation.** *Nat Rev Mol Cell Biol* 2010, **11**(7):490-501.
3. Tamura K, Fukao Y, Iwamoto M, Haraguchi T, Hara-Nishimura I: **Identification and characterization of nuclear pore complex components in Arabidopsis thaliana.** *The Plant cell* 2010, **22**(12):4084-4097.
4. Capitanio JS, Montpetit B, Wozniak RW: **Nucleoplasmic Nup98 controls gene expression by regulating a DEXH/D-box protein.** *Nucleus* 2018, **9**(1):1-8.
5. Franks TM, McCloskey A, Shokirev MN, Benner C, Rathore A, Hetzer MW: **Nup98 recruits the Wdr82-Set1A/COMPASS complex to promoters to regulate H3K4 trimethylation in hematopoietic progenitor cells.** *Genes Dev* 2017, **31**(22):2222-2234.
6. Gallemi M, Galstyan A, Paulisic S, Then C, Ferrandez-Ayela A, Lorenzo-Orts L, Roig-Villanova I, Wang X, Micol JL, Ponce MR *et al*: **DRACULA2 is a dynamic nucleoporin with a role in regulating the shade avoidance syndrome in Arabidopsis.** *Development* 2016, **143**(9):1623-1631.
7. Light WH, Brickner JH: **Nuclear pore proteins regulate chromatin structure and transcriptional memory by a conserved mechanism.** *Nucleus* 2013, **4**(5):357-360.
8. Cross MK, Powers MA: **Nup98 regulates bipolar spindle assembly through association with microtubules and opposition of MCAK.** *Mol Biol Cell* 2011, **22**(5):661-672.
9. Parry G: **Components of the Arabidopsis nuclear pore complex play multiple diverse roles in control of plant growth.** *J Exp Bot* 2014, **65**(20):6057-6067.
10. Tang MZ, Ning YS, Shu XL, Dong B, Zhang HY, Wu DX, Wang H, Wang GL, Zhou B: **The Nup98 Homolog APIP12 Targeted by the Effector AvrPiz-t is Involved in Rice Basal Resistance Against Magnaporthe oryzae.** *Rice* 2017, **10**.
11. Genencher B, Wirthmueller L, Roth C, Klenke M, Ma L, Sharon A, Wiermer M: **Nucleoporin-Regulated MAP Kinase Signaling in Immunity to a Necrotrophic Fungal Pathogen.** *Plant Physiology* 2016, **172**(2):1293-1305.
12. Jiang S, Xiao L, Huang P, Cheng Z, Chen F, Miao Y, Fu YF, Chen Q, Zhang XM: **Nucleoporin Nup98 participates in flowering regulation in a CONSTANS-independent mode.** *Plant cell reports* 2019, **38**(10):1263-1271.

13. Gan S, Amasino RM: **Making Sense of Senescence (Molecular Genetic Regulation and Manipulation of Leaf Senescence)**. *Plant Physiol* 1997, **113**(2):313-319.
14. **Buchanan-Wollaston V: The molecular biology of leaf senescence.** *J Exp Bot* 1997, **48**(307):181-199.
15. Kroger R, Holland MM, Moore MT, Cooper CM: **Plant senescence: a mechanism for nutrient release in temperate agricultural wetlands.** *Environ Pollut* 2007, **146**(1):114-119.
16. Himelblau E, Amasino RM: **Nutrients mobilized from leaves of *Arabidopsis thaliana* during leaf senescence.** *J Plant Physiol* 2001, **158**:1317-1323.
17. Balazadeh S, Riano-Pachon DM, Mueller-Roeber B: **Transcription factors regulating leaf senescence in *Arabidopsis thaliana*.** *Plant Biol (Stuttg)* 2008, **10 Suppl 1**:63-75.
18. Streb S, Zeeman SC: **Starch metabolism in *Arabidopsis*.** *The Arabidopsis book / American Society of Plant Biologists* 2012, **10**:e0160.
19. Ruan YL: **Sucrose Metabolism: Gateway to Diverse Carbon Use and Sugar Signaling.** *Annual Review of Plant Biology* 2014, **65**:33-67.
20. van Doorn WG: **Is the onset of senescence in leaf cells of intact plants due to low or high sugar levels?** *J Exp Bot* 2008, **59**(8):1963-1972.
21. Wingler A, Delatte TL, O'Hara LE, Primavesi LF, Jhurrea D, Paul MJ, Schluepmann H: **Trehalose 6-phosphate is required for the onset of leaf senescence associated with high carbon availability.** *Plant Physiol* 2012, **158**(3):1241-1251.
22. Sheen J: **Master Regulators in Plant Glucose Signaling Networks.** *J Plant Biol* 2014, **57**(2):67-79.
23. Thomas H: **Senescence, ageing and death of the whole plant.** *New Phytol* 2013, **197**(3):696-711.
24. Wingler A, Purdy S, MacLean JA, Pourtau N: **The role of sugars in integrating environmental signals during the regulation of leaf senescence.** *J Exp Bot* 2006, **57**(2):391-399.
25. Cho JI, Ryoo N, Eom JS, Lee DW, Kim HB, Jeong SW, Lee YH, Kwon YK, Cho MH, Bhoo SH *et al*: **Role of the rice hexokinases OsHXK5 and OsHXK6 as glucose sensors.** *Plant Physiol* 2009, **149**(2):745-759.
26. Baena-Gonzalez E, Rolland F, Thevelein JM, Sheen J: **A central integrator of transcription networks in plant stress and energy signalling.** *Nature* 2007, **448**(7156):938-942.
27. Xiong Y, Sheen J: **Rapamycin and glucose-target of rapamycin (TOR) protein signaling in plants.** *J Biol Chem* 2012, **287**(4):2836-2842.
28. Xiong Y, Sheen J: **Moving beyond translation: glucose-TOR signaling in the transcriptional control of cell cycle.** *Cell cycle* 2013, **12**(13):1989-1990.
29. D'Angelo MA, Raices M, Panowski SH, Hetzer MW: **Age-dependent deterioration of nuclear pore complexes causes a loss of nuclear integrity in postmitotic cells.** *Cell* 2009, **136**(2):284-295.
30. Webster BM, Colombi P, Jager J, Lusk CP: **Surveillance of nuclear pore complex assembly by ESCRT-III/Vps4.** *Cell* 2014, **159**(2):388-401.
31. Fichtman B, Harel A: **Stress and aging at the nuclear gateway.** *Mech Ageing Dev* 2014, **135**:24-32.

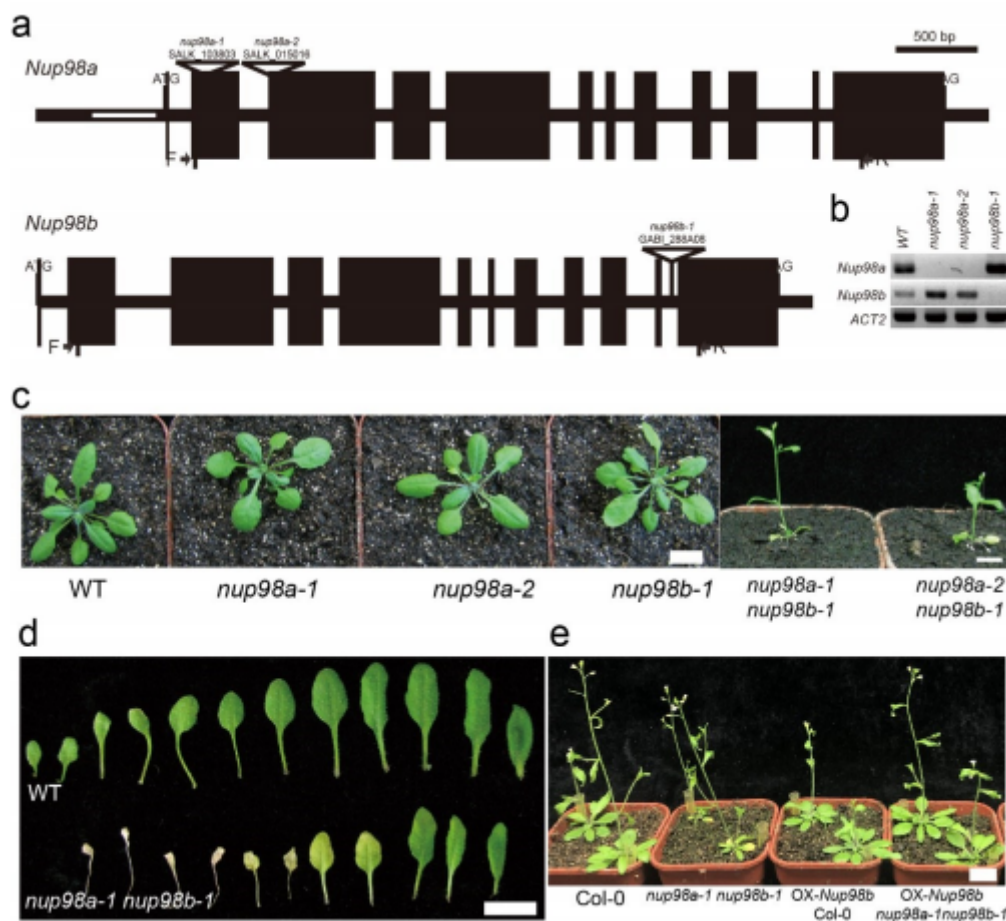
32. Fernandez-Martinez J, Rout MP: **Nuclear pore complex biogenesis.** *Curr Opin Cell Biol* 2009, **21**(4):603-612.
33. Hetzer MW: **The role of the nuclear pore complex in aging of post-mitotic cells.** *Aging (Albany NY)* 2010, **2**(2):74-75.
34. Kim SY, Kang HT, Choi HR, Park SC: **Reduction of Nup107 attenuates the growth factor signaling in the senescent cells.** *Biochem Biophys Res Commun* 2010, **401**(1):131-136.
35. Snow CJ, Paschal BM: **Roles of the nucleoporin Tpr in cancer and aging.** *Advances in experimental medicine and biology* 2014, **773**:309-322.
36. David-Watine B: **Silencing nuclear pore protein Tpr elicits a senescent-like phenotype in cancer cells.** *PloS one* 2011, **6**(7):e22423.
37. Xiao L, Liu W, Chen F, Zhang X, Chen Q, Fu Y-F: **The Phenotype Analysis of NUP107-160 Subcomplex Mutants in Arabidopsis.** *J Agri Sci Tech* 2016, **18**(5):54-61.
38. Contento AL, Kim SJ, Bassham DC: **Transcriptome profiling of the response of Arabidopsis suspension culture cells to Suc starvation.** *Plant Physiol* 2004, **135**(4):2330-2347.
39. Gonzali S, Loreti E, Solfanelli C, Novi G, Alpi A, Perata P: **Identification of sugar-modulated genes and evidence for in vivo sugar sensing in Arabidopsis.** *J Plant Res* 2006, **119**(2):115-123.
40. Miao Y, Smykowski A, Zentgraf U: **A novel upstream regulator of WRKY53 transcription during leaf senescence in Arabidopsis thaliana.** *Plant Biol (Stuttg)* 2008, **10** Suppl 1:110-120.
41. Hensel LL, Grbic V, Baumgarten DA, Bleecker AB: **Developmental and age-related processes that influence the longevity and senescence of photosynthetic tissues in arabidopsis.** *The Plant cell* 1993, **5**(5):553-564.
42. Lohman KN, Gan S, John MC, Amasino RM: **Molecular analysis of natural leaf senescence in Arabidopsis thaliana.** *Physiol Plant* 1994, **92**(2):322-328.
43. Usadel B, Nagel A, Thimm O, Redestig H, Blaesing OE, Palacios-Rojas N, Selbig J, Hannemann J, Piques MC, Steinhauser D *et al*: **Extension of the visualization tool MapMan to allow statistical analysis of arrays, display of corresponding genes, and comparison with known responses.** *Plant Physiol* 2005, **138**(3):1195-1204.
44. Bassham DC, Laporte M, Marty F, Moriyasu Y, Ohsumi Y, Olsen LJ, Yoshimoto K: **Autophagy in development and stress responses of plants.** *Autophagy* 2006, **2**(1):2-11.
45. Bassham DC: **Methods for analysis of autophagy in plants.** *Methods* 2015, **75**:181-188.
46. Fujiki Y, Yoshikawa Y, Sato T, Inada N, Ito M, Nishida I, Watanabe A: **Dark-inducible genes from Arabidopsis thaliana are associated with leaf senescence and repressed by sugars.** *Physiol Plant* 2001, **111**(3):345-352.
47. Noh YS, Amasino RM: **Regulation of developmental senescence is conserved between Arabidopsis and Brassica napus.** *Plant Molecular Biology* 1999, **41**(2):195-206.
48. Weaver LM, Gan S, Quirino B, Amasino RM: **A comparison of the expression patterns of several senescence-associated genes in response to stress and hormone treatment.** *Plant Mol Biol* 1998,

37(3):455-469.

49. Klimesova J, Nobis MP, Herben T: **Senescence, ageing and death of the whole plant: morphological prerequisites and constraints of plant immortality.** *New Phytol* 2015, **206**(1):14-18.
50. Lim PO, Kim HJ, Nam HG: **Leaf senescence.** *Annu Rev Plant Biol* 2007, **58**:115-136.
51. Khan M, Rozhon W, Poppenberger B: **The role of hormones in the aging of plants - a mini-review.** *Gerontology* 2014, **60**(1):49-55.
52. Guo Y: **Towards systems biological understanding of leaf senescence.** *Plant Mol Biol* 2013, **82**(6):519-528.
53. Guiboileau A, Sormani R, Meyer C, Masclaux-Daubresse C: **Senescence and death of plant organs: nutrient recycling and developmental regulation.** *C R Biol* 2010, **333**(4):382-391.
54. Zhang H, Zhou C: **Signal transduction in leaf senescence.** *Plant Mol Biol* 2013, **82**(6):539-545.
55. Jibrán R, Hunter DA, Dijkwel PP: **Hormonal regulation of leaf senescence through integration of developmental and stress signals.** *Plant Mol Biol* 2013, **82**:547-561.
56. Bakshi M, Oelmüller R: **WRKY transcription factors: Jack of many trades in plants.** *Plant signaling & behavior* 2014, **9**(2):e27700.
57. Koyama T: **The roles of ethylene and transcription factors in the regulation of onset of leaf senescence.** *Frontiers in plant science* 2014, **5**:650.
58. Hinderhofer K, Zentgraf U: **Identification of a transcription factor specifically expressed at the onset of leaf senescence.** *Planta* 2001, **213**(3):469-473.
59. Miao Y, Laun T, Zimmermann P, Zentgraf U: **Targets of the WRKY53 transcription factor and its role during leaf senescence in Arabidopsis.** *Plant Mol Biol* 2004, **55**(6):853-867.
60. Wingler A, Masclaux-Daubresse C, Fischer AM: **Sugars, senescence, and ageing in plants and heterotrophic organisms.** *J Exp Bot* 2009, **60**(4):1063-1066.
61. Lastdrager J, Hanson J, Smeekens S: **Sugar signals and the control of plant growth and development.** *J Exp Bot* 2014, **65**(3):799-807.
62. Kim JA, Kim HS, Choi SH, Jang JY, Jeong MJ, Lee SI: **The Importance of the Circadian Clock in Regulating Plant Metabolism.** *International journal of molecular sciences* 2017, **18**(12).
63. Seluzicki A, Burko Y, Chory J: **Dancing in the dark: darkness as a signal in plants.** *Plant Cell and Environment* 2017, **40**(11):2487-2501.
64. Flis A, Mengin V, Ivakov AA, Mugford ST, Hubberten HM, Encke B, Krohn N, Hohne M, Feil R, Hoefgen R *et al*: **Multiple circadian clock outputs regulate diel turnover of carbon and nitrogen reserves.** *Plant, cell & environment* 2019, **42**(2):549-573.
65. Kim H, Kim HJ, Vu QT, Jung S, McClung CR, Hong S, Nam HG: **Circadian control of ORE1 by PRR9 positively regulates leaf senescence in Arabidopsis.** *Proc Natl Acad Sci U S A* 2018, **115**(33):8448-8453.
66. Kikis EA, Khanna R, Quail PH: **ELF4 is a phytochrome-regulated component of a negative feedback loop involving the central oscillator components CCA1 and LHY.** *Plant J* 2005, **44**(2):300-313.

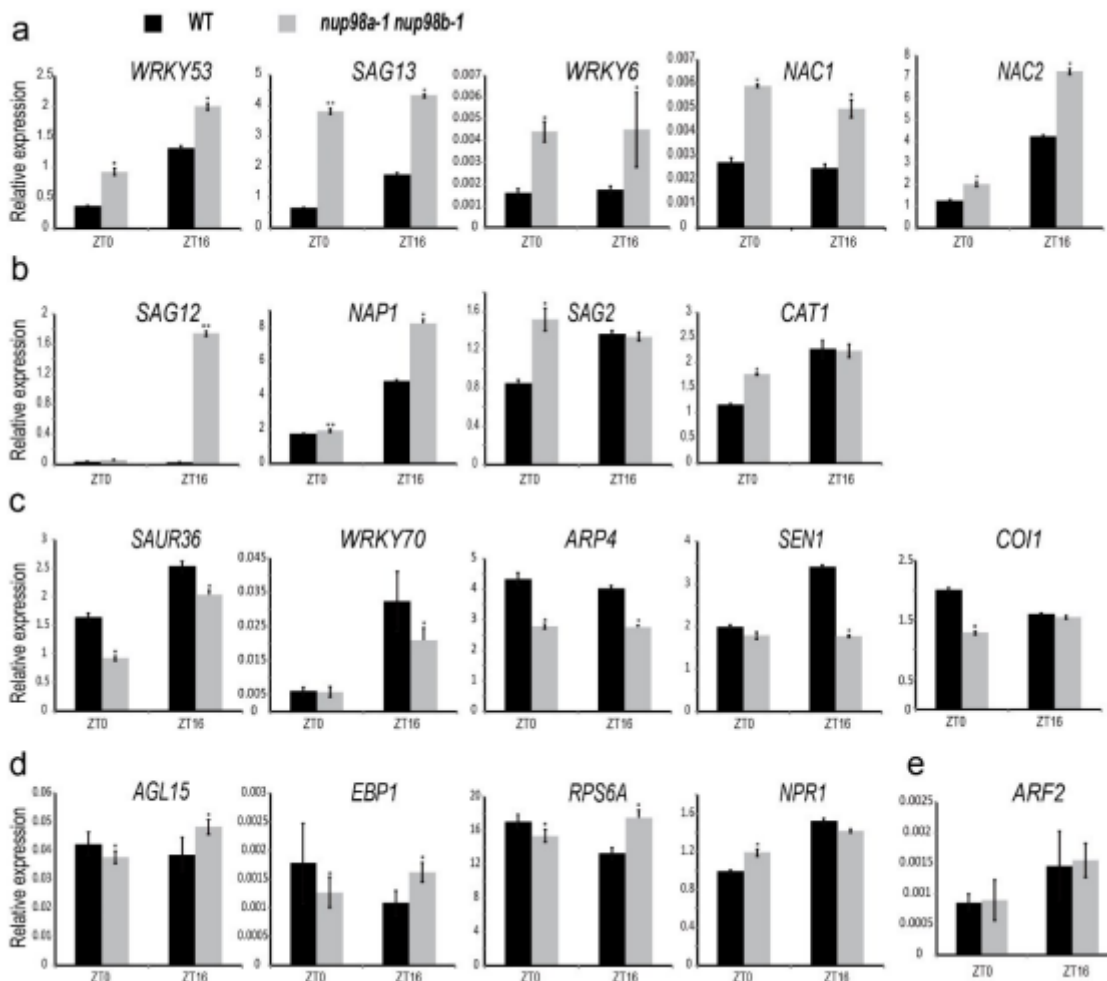
67. Wang X, Fan C, Zhang X, Zhu J, Fu YF: **BioVector, a flexible system for gene specific-expression in plants.** *BMC Plant Biol* 2013, **13**(1):198.
68. Clough SJ, Bent AF: **Floral dip: a simplified method for Agrobacterium-mediated transformation of *Arabidopsis thaliana*.** *Plant J* 1998, **16**(6):735-743.
69. Xiao C, Chen F, Yu X, Lin C, Fu YF: **Over-expression of an AT-hook gene, AHL22, delays flowering and inhibits the elongation of the hypocotyl in *Arabidopsis thaliana*.** *Plant Mol Biol* 2009, **71**(1-2):39-50.
70. Gutierrez L, Mauriat M, Guenin S, Pelloux J, Lefebvre JF, Louvet R, Rusterucci C, Moritz T, Guerineau F, Bellini C *et al.*: **The lack of a systematic validation of reference genes: a serious pitfall undervalued in reverse transcription-polymerase chain reaction (RT-PCR) analysis in plants.** *Plant biotechnology journal* 2008, **6**(6):609-618.
71. Czechowski T, Stitt M, Altmann T, Udvardi MK, Scheible WR: **Genome-wide identification and testing of superior reference genes for transcript normalization in *Arabidopsis*.** *Plant Physiol* 2005, **139**(1):5-17.
72. Caspar T, Lin TP, Kakefuda G, Benbow L, Preiss J, Somerville C: **Mutants of *Arabidopsis* with altered regulation of starch degradation.** *Plant Physiol* 1991, **95**(4):1181-1188.

## Figures



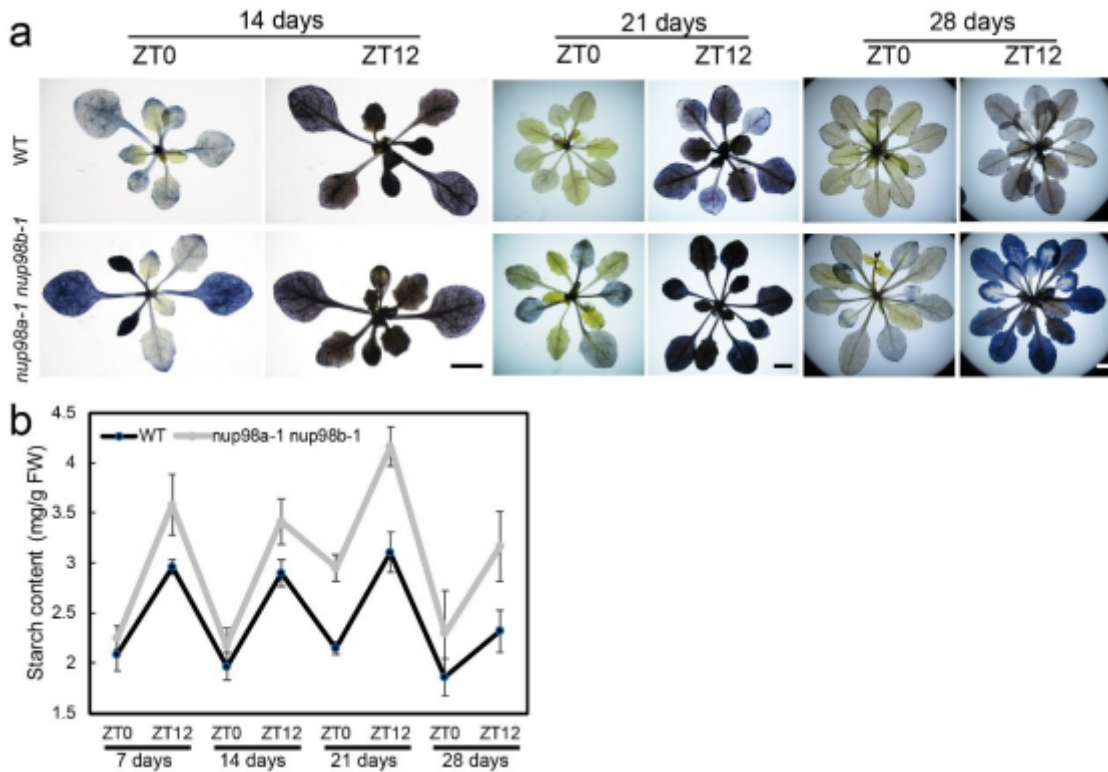
**Figure 1**

Mutation of *Nup98* leads to an early senescence phenotype. A, T-DNA insertion alleles in *Nup98a* and *Nup98b*. Black bars indicate exons, thin black lines indicate introns or UTR, open line in the 5'-UTR indicates an intron in 5'-UTR, triangles shows T-DNA insertions and the mutant name and T-DNA identifier above the symbol. B, RT-PCR confirmed the single mutants of *nup98a-1*, *nup98a-2*, and *nup98b-1*. The position of primers of F and R were indicated in A (black arrows). ACT2 was used as a control. C, Single mutants of *nup98a-1*, *nup98a-2*, and *nup98b-1* displayed similar phenotypes to wild type plants however the double mutants of *nup98a-1 nup98b-1* and *nup98a-2 nup98b-1* showed severe early senescence. The photos were taken on day 20 after germination. D, The leaf senescence phenotype of the *nup98a-1 nup98b-1* double mutant rosette leaves harvested at inflorescence emergence. E, Ectopic expression of *Nup98b* rescued the leaf senescence phenotype of the *nup98a-1 nup98b-1* double mutant. All plants grew in soil from germination. The photos were taken on day 30 after germination. An \* indicates measurements that were significantly (\* $P < 0.05$ ; \*\* $P < 0.01$ ) different from the control. Error bars indicate  $\pm$  SD of the mean.



**Figure 2**

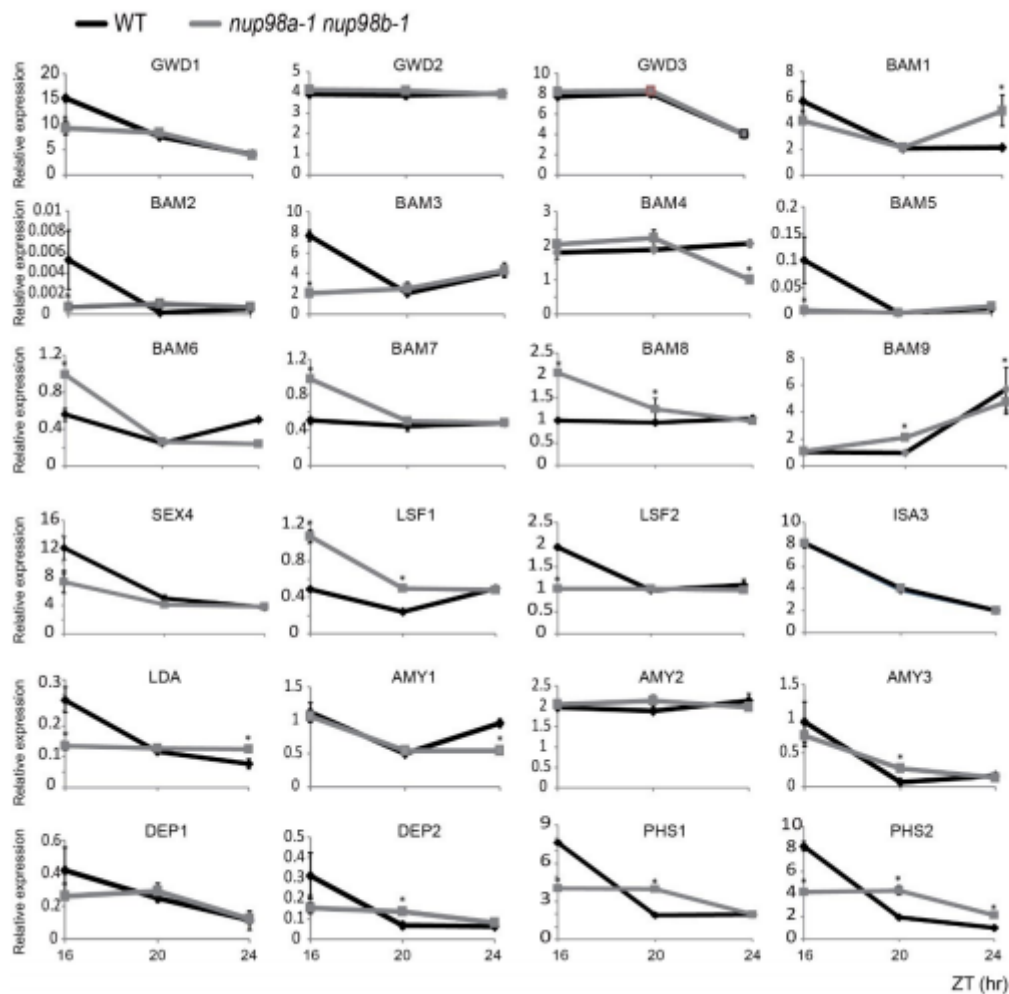
The expression of genes related to senescence are altered in the *nup98a-1 nup98b-1* double mutant. A, Genes up-regulated both at dawn (ZT0) and dusk (ZT16). B, Genes up-regulated at dawn (ZT0) or dusk (ZT16). C, Genes dawn-regulated at dawn (ZT0) and/or dusk (ZT16). D, Genes up-regulated or dawn-regulated at dawn (ZT0) and dusk (ZT16), respectively. E, Genes with no significant changes both at dawn (ZT0) and dusk (ZT16). The *nup98a-1 nup98b-1* double mutant and wild type plants were grown in petri dishes in long day conditions for 14 days, and then harvested at ZT0 and ZT16 for gene expression analysis. All RT-PCR measurements were repeated at least three times, in triplicate. All RT-PCR gene expression measurements were normalized to the control TIP41 (*At4g34270*) and expressed as a relative expression value. Student's t test was used to statistically analyze the data. An \* indicates measurements that were significantly (\* $P < 0.05$ ; \*\* $P < 0.01$ ) different from the control. Error bars indicate  $\pm$  SD of the mean.



**Figure 3**

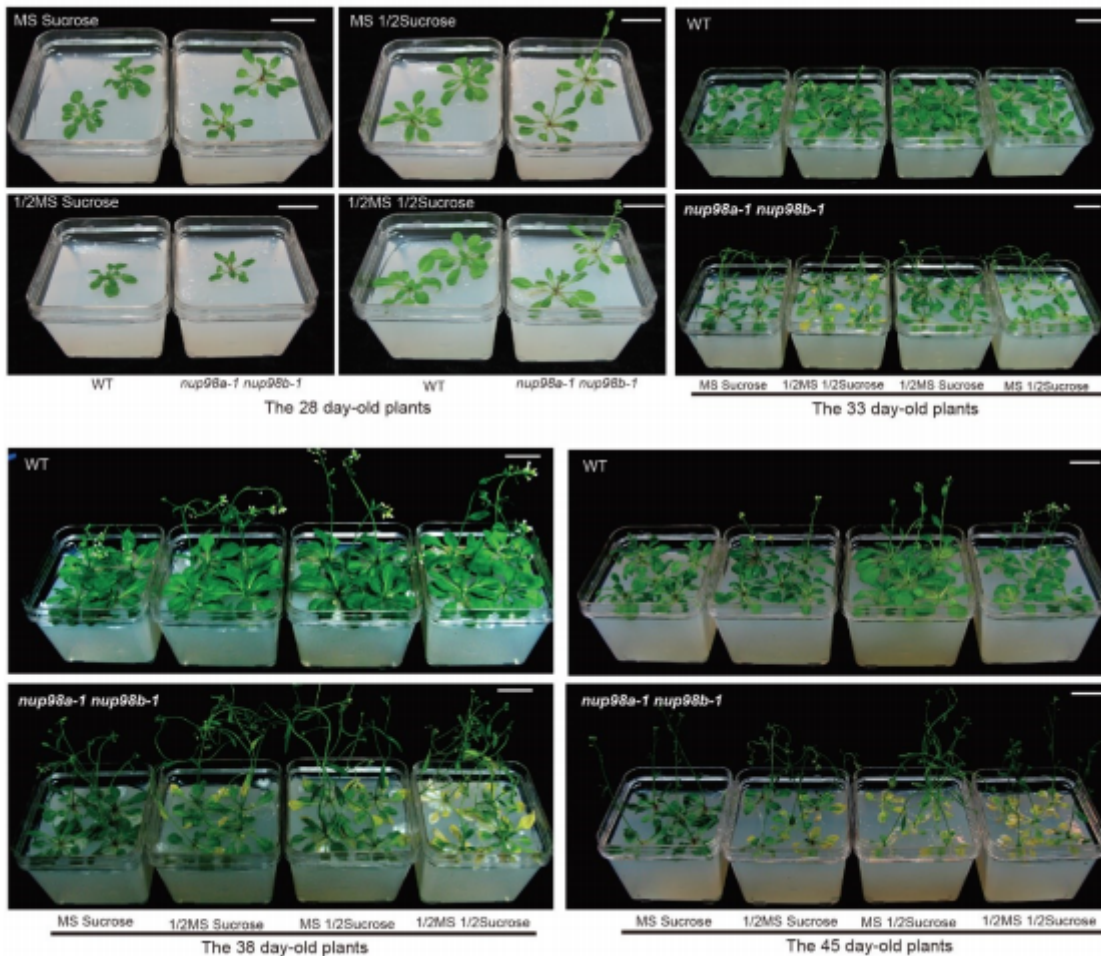
The *nup98a-1 nup98b-1* double mutant has abnormal starch degradation. Arabidopsis seeds were sown on 1/2 MS medium and placed at 4°C for 3 days, then transferred to 12 h light/12 h dark conditions. Plants were grown for an additional 7, 14, 21, or 28 days and were harvested at ZT0 and ZT12 for starch staining by iodine-potassium iodide (A) and starch quantitative assay by using Starch Determination Kit (Solarbio, Beijing, Cat#BC0700) on Spectrophotometer (B).





**Figure 4**

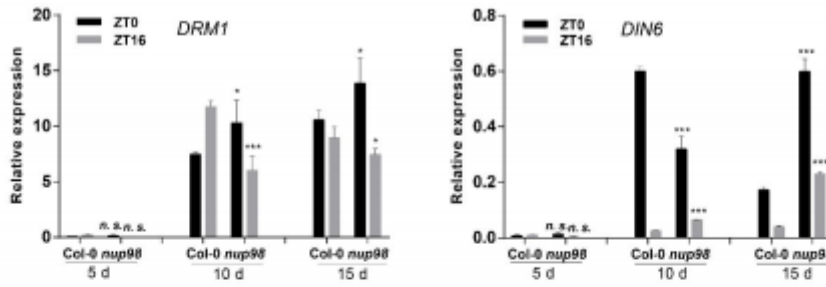
The expression of genes related to starch metabolism are altered in the *nup98a-1 nup98b-1* double mutant. The seeds of mutants and wild type plants were sown on MS medium. After low temperature treatment for 3 days, plants were grown under long day conditions. Samples were harvested at ZT16, 20 and 24 during the dark phase. All RT-PCR measurements were repeated at least three times, in triplicate. All RT-PCR gene expression measurements were normalized to the control TIP41 (At4g34270) and expressed as a relative expression value. Student's t test was used to statistically analyze the data. An \* indicates measurements that were significantly (\* $P < 0.05$ ) different from the control. Error bars indicate  $\pm$  SD of the mean.



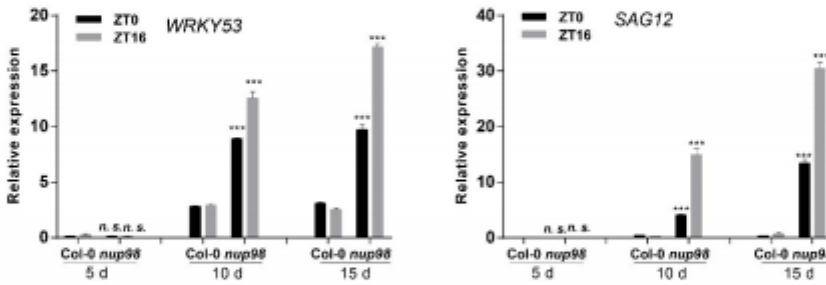
**Figure 5**

Increased nutrients and sucrose delays senescence in *nup98a-1 nup98b-1* double mutants. The seeds of mutants and wild type plants were sown on medium with different strengths of MS (Murashige & Skoog) nutrients and 3% sucrose. 1/2MS indicates 1/2 strength of MS. 1/2Sucrose indicates 1.5% sucrose. After stratification, plants were grown under long day conditions. Both nutrients and sucrose delayed senescence phenotypes in the *nup98a-1 nup98b-1* double mutant plants. Bars = 5 cm.

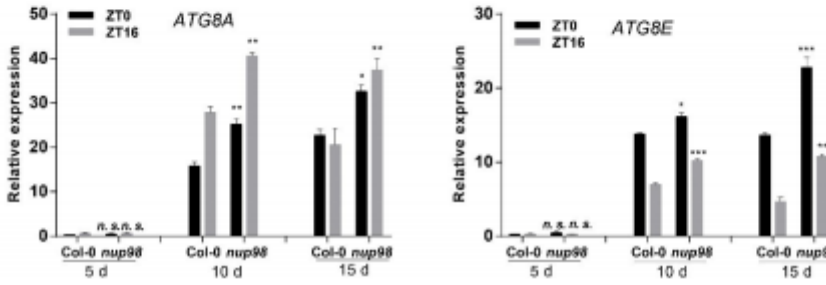
### a, Sugar starvation gene markers



### b, Senescence gene markers

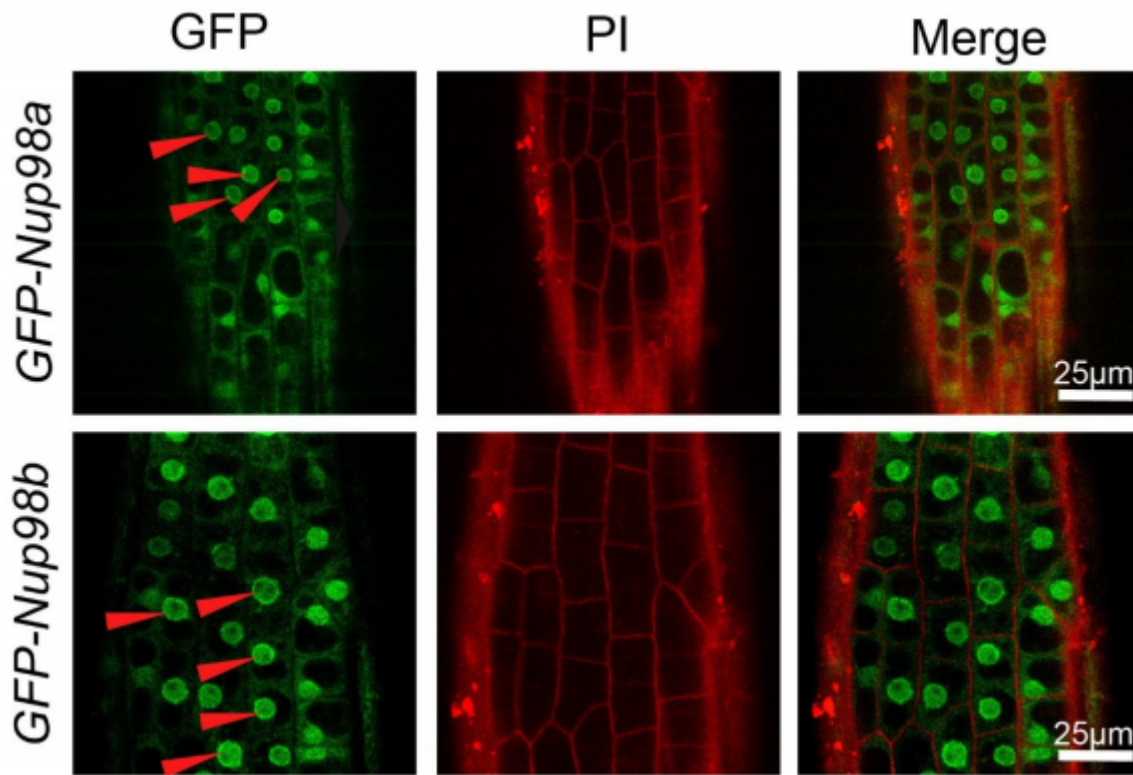


### c, Autophagy gene markers



**Figure 6**

Marker genes of starvation and senescence mis-express in the *nup98a-1 nup98b-1* double mutant. A, Sugar starvation genes. B, Senescence genes. C, Autophagy genes. The seeds of the mutant and wild type plants were sown on MS medium. After low temperature treatment for 3 days, the seedlings were grown for 7 days under long day conditions, then seedlings were transplanted in soil. From that, samples were harvested in day 5, 10, and 15 at both ZT0 and ZT16. All qPCR measurements were repeated at least three times, normalized to the reference gene *TIP41* (*At4g34270*) and expressed as a relative expression value. Student's t test was used to statistically analyze the data. Error bars indicate  $\pm$  SD of the mean. Asterisk indicates significant difference between the *nup98* double mutant and wild type plants (one asterisk,  $p < 0.05$ ; double asterisks,  $p < 0.01$ ; triple asterisks,  $p < 0.001$ . n.s., No significant difference).



**Figure 7**

Nup98a and Nup98b proteins are localized to the nuclear membrane and in the nucleoplasm. The green fluorescent protein (GFP) was fused to either Nup98a or Nup98b to generate N-terminal translational fusional proteins, GFP-Nup98a and GFP-Nup98b, and were driven by the CaMV 35S promoter after stable transformation into *Arabidopsis thaliana* plants. Arrow heads indicated that both GFP-Nup98a and GFP-Nup98b enriched near the nuclear periphery when compared to the cytoplasm. PI (propidium iodide) is for cell wall staining.

## Supplementary Files

This is a list of supplementary files associated with this preprint. Click to download.

- [Supplementarydata.docx](#)