

Bacterial and Fungal Bloodstream Infections in Pediatric Liver and Kidney Transplant Recipients

Dina Møller

Viro-immunology Research Unit, Department of Infectious Diseases, Rigshospitalet, University of Copenhagen, Copenhagen

Søren Sørensen

Department of Nephrology, Rigshospitalet, University of Copenhagen, Copenhagen

Neval Wareham

Centre of Excellence for Health, Immunity, and Infections, Department of Infectious Diseases, Rigshospitalet, University of Copenhagen, Copenhagen,

Omid Reza Hosseini

Viro-immunology Research Unit, Department of Infectious Diseases, Rigshospitalet, University of Copenhagen, Copenhagen

Andreas Knudsen

Viro-immunology Research Unit, Department of Infectious Diseases, Rigshospitalet, University of Copenhagen, Copenhagen

Jenny Knudsen

Department of Clinical Microbiology, Rigshospitalet, University of Copenhagen, Copenhagen

Allan Rasmussen

Department of Surgical Gastroenterology and Transplantation, Rigshospitalet, University of Copenhagen, Copenhagen

Susanne Nielsen (✉ sdn@dadlnet.dk)

Viro-immunology Research Unit, Department of Infectious Diseases, Rigshospitalet, University of Copenhagen, Copenhagen

Research Article

Keywords: Liver transplantation, kidney transplantation, bacteremia, fungemia.

Posted Date: December 14th, 2020

DOI: <https://doi.org/10.21203/rs.3.rs-116591/v1>

License: © ⓘ This work is licensed under a Creative Commons Attribution 4.0 International License.

[Read Full License](#)

Abstract

Background Bacterial and fungal bloodstream infections (BSI) are common after pediatric liver and kidney transplantations and associated with morbidity and mortality. However, knowledge about incidence rates, pathogen composition, and resistance patterns is limited. We aimed to describe the pattern of bacterial and fungal BSI in a cohort of pediatric liver and kidney transplant recipients.

Methods A prospective study of 85 pediatric liver and kidney transplant recipients transplanted from 2010 to 2017 with a total of 390 person-years of follow-up. Clinical characteristics and BSI were retrieved from national registries assuring nationwide follow-up for at least one year. BSI incidence rates and pathogen composition were investigated and stratified by the time post-transplantation and type of transplanted organ.

Results A total of 29 BSI were observed within the first 5 years post-transplantation with 16 different pathogens. The overall incidence rate of first BSI was 1.91 per 100 recipients per month (95% CI, 1.1-3.1) in the first-year post-transplantation. The most common pathogens were *Enterococcus faecium*, *Candida albicans*, *Escherichia coli*, and *Klebsiella pneumoniae*. The pathogen composition depended on the transplanted organ with a higher proportion of BSI with Enterobacterales in kidney transplant recipients than in liver transplant recipients (67% vs. 20%, $P = 0.03$), while multiple pathogens were detected in the liver transplant recipients.

Conclusions BSI were common in pediatric liver and kidney transplant recipients and the pathogen composition differed between liver and kidney transplant recipients. Guidelines for empiric antibiotic therapy should consider the type of transplanted organ as well as the local resistance patterns.

Introduction

The outcome of liver and kidney transplantations in children has improved over the last decades with a 5-year survival of 85–96%(1, 2). However, complications to immunosuppression including severe infections and malignancies still cause substantial morbidity and mortality in these recipients(1, 3, 4). Infections are associated with allograft dysfunction(1) and are a common cause of death in children after liver and kidney transplantation(1, 4, 5).

Bacterial and fungal bloodstream infections (BSI) are serious and prevalent infections. Thus, BSI have been reported in up to 25% of pediatric liver transplant recipients within the first-year post-transplantation(6). Knowledge about the composition of the pathogens that cause serious infections including BSI is important for the choice of empiric antibiotic therapy and may influence treatment outcome. In adult liver and kidney transplant recipients, the incidence rate (IR) of infections and the pathogen composition (bacteria, fungal, and virus) change during the first-year post-transplantation(7). Little is known about the pattern of infections over time in pediatric liver and kidney transplant recipients. Previous studies on the pathogens causing BSI in pediatric liver and kidney recipients have primarily focused on either the early post-transplantation period (< 6 months post-transplantation)(8–10) or the

late post-transplantation period (> 6 months post-transplantation)(11) and studies with a complete follow-up are warranted.

This study was conducted to describe the pattern of bacterial and fungal BSI in pediatric liver and kidney transplant recipients and to provide information for recommendations regarding the use of empiric antibiotic therapy. We prospectively examined all bacterial and fungal BSI in pediatric liver and kidney transplant recipients at a tertiary pediatric transplantation center during the period 2010–2017 to evaluate the BSI incidence rates, BSI pathogen composition, and mortality after BSI during the first-year post-transplantation.

Materials And Methods

Study design and participants

In this prospective study, we included pediatric recipients (< 18 years of age) going through the first liver, kidney, or combined liver and kidney transplantation at Rigshospitalet, University Hospital of Copenhagen, Denmark, from January 1st, 2010 to December 31th, 2017. Rigshospitalet is a large tertiary hospital and specialist center of knowledge in transplantation and the only center in Denmark for pediatric liver transplantations. Pediatric liver and kidney transplant recipients were included from the Management of Posttransplant Infections in Collaborating Hospitals (MATCH) cohort(12).

Clinical characteristics including transplantation-specific data and microbiology were retrieved from the Centre of Excellence for Personalized Medicine of Infectious Complications in Immune Deficiency (PERSIMUNE) data repository(13). Data were generated prospectively as part of the routine care and were merged in the PERSIMUNE data repository. The PERSIMUNE data repository contains data from several national registries and clinical databases including the Danish Microbiology Database (MiBa) that contains data on all microbiological samples in Denmark from both general practice and hospitals with complete coverage since 2010(14). From MiBa we received information about all blood cultures, including antibiotic resistance profiles, on all recipients from the day of transplantation to the end of follow-up.

The study was conducted in accordance with the declaration of Helsinki. The retrieval of the data was approved by the National Committee on Health Research Ethics (H-170024315) and the Data Protection Agency (04433, RH-2016-47).

Immunosuppression and antimicrobial prophylaxis

The standard immunosuppressive regimen after liver and combined liver and kidney transplantation consisted of tacrolimus, mycophenolate mofetil (MMF), and prednisolone (Supplementary material content 1). The standard immunosuppressive regimen in kidney transplantation consisted of induction with basiliximab and tacrolimus, MMF, and prednisolone (Supplementary material content 1). All liver and combined liver and kidney transplant recipients received meropenem (15 mg/kg/3xday) in the first 5 days post-transplantation. Kidney transplant recipients received a single dose of cefuroxime (40mg/kg)

preoperatively. High-risk liver and combined liver and kidney (D^{pos}/R^{pos/neg}) and all kidney transplant recipients received 3 months of *Cytomegalovirus* prophylaxis with valganciclovir (dose depending on body surface area and creatinine). Low-risk liver and combined liver and kidney (D^{neg}/R^{pos/neg}) transplant recipients received 3 months of valganciclovir (dose depending on estimated glomerular filtration rate (eGFR)). Both liver, kidney, and combined liver and kidney transplant recipients received 6 months of trimethoprim-sulfamethoxazole (12.5/2.5mg/kg/2xday two days a week) prophylaxis for *Pneumocystis jirovecii* infection.

Bloodstream infection

The blood cultures were drawn on clinical indication. All blood cultures were analyzed using either BACTEC FX® (Becton, Dickinson and Company, Franklin Lakes, USA) or BACT/ALERT® (Biomérieux, **Marcy l'Etoile**, France) microbial detection systems. BSI was defined according to the Centers for Disease Control and Prevention criteria(15) as an isolation of a bacterial or fungal pathogen from a blood culture that was not attributed to contamination unless the contaminant was isolated on two or more separate occasions within two days together with clinical symptoms of infections. *Corynebacterium spp.* (not *Corynebacterium diphtheria*), *Bacillus spp.* (not *Bacillus anthracis*), *Cutibacterium spp.*, coagulase-negative staphylococci, non-hemolytic streptococci of the viridans group, *Aerococcus spp.*, and *Micrococcus spp.* were regarded as contaminants(15). Multiple episodes with the same pathogen were considered part of the same infection if they occurred within 14 days after the previous event(16).

Follow-up

All recipients were followed from the date of transplantation to the end of follow-up on December 31th 2018, retransplantation, or death, whichever came first. Inclusion stopped on December 31th 2017 to allow for at least one year of follow-up for all participants.

Number of BSI, BSI incidence rates, and pathogen composition were reported for the entire follow-up period and divided into four time periods post-transplantation; <1st month, 2nd-6th months, 7th-12th months, and 2nd-5th years post-transplantation. BSI occurring after 5 years of follow-up were not reported.

Statistical analysis

In all analyses, liver and combined liver-kidney transplant recipients were merged as one group. Proportions were presented as percentages, and continuous data were presented as medians with range. The BSI incidence rates were calculated as the number of first BSI per recipient per person-time at risk in months to account for the different lengths of follow-up in both the liver and kidney transplant recipients and the different time periods post-transplantation. We calculated 95% confidence intervals (CI) using Byar's approximation to the Poisson distribution. The 5-year cumulative incidence of first BSI for the combined group was calculated using the Aalen-Johansen estimator. Differences in pathogen composition of the BSI stratified by the transplanted organ were calculated using a Fisher's exact test.

The probability of survival after a BSI in the first-year post-transplantation was calculated using a Kaplan-Meier estimator. All analyses were conducted in the statistical software R version 3.6.1(17).

Results

Characteristics of the pediatric liver and kidney transplant recipients and the blood cultures

We included 85 pediatric liver, kidney, or combined liver and kidney transplant recipients into our cohort (Table 1) corresponding to all pediatric liver and combined liver and kidney transplantations and 46% of pediatric kidney transplantations performed in Denmark during the inclusion period. Liver and combined liver and kidney transplantations were more frequent (64%) than kidney transplantation (36%). The median age at the time of transplantation was 10.5 years (range 0.6-17.9) and there were slightly fewer males (49%) than females. Eight recipients (9%) had less than one year of follow-up due to early mortality or retransplantation. The median follow-up was 4.6 years (range: 0.01 – 8.9 years) with a total of 390 person-years of follow-up in the cohort.

A total of 883 blood cultures were drawn on 72 of 85 (85%) recipients during the first 5 years post-transplantation (Table 2). Of these, 59 blood cultures (7%) were positive, 805 blood cultures (91%) were negative, and 19 blood cultures (2%) were contaminated. The majority of blood cultures were drawn within the first-year post-transplantation (64%).

The 59 positive blood cultures resulted in 29 BSI in 19 (22%) recipients (Table 2). None of the contaminated blood cultures comply with CDC criteria for BSI. Eleven (13%) recipients had 1 BSI, 6 (7%) recipients had 2 BSI, 2 (2%) recipients had 3 BSI during follow-up. Fifteen out of the 19 recipients with a BSI (79%), developed their first BSI within the first-year post-transplantation.

BSI incidence rate

The overall incidence rate (IR) of first BSI in the first-year post-transplantation in the entire cohort was 1.91 first BSI per 100 recipients per month (95% CI, 1.1-3.1) corresponding to 22.5 first BSI per 100 recipients per year (95% CI, 13.2-36.2). The IR of first BSI was highest the first-month post-transplantation (6.47 first BSI per 100 recipients per month (95% CI, 2.5-14.2)) and decreased throughout the year with a lower IR at 2nd-6th month (2.55 first BSI per 100 recipients per month (95% CI, 1.3-4.7)) and 7th-12th month post-transplantation (IR of 0.5 first BSI per 100 recipients per month (95% CI, 0.1-1.5)).

We observed both fungal (4 out of 20) and bacterial BSI (16 out of 20) in the liver transplant recipients whereas kidney transplant recipients only had bacterial BSI. The IR of first bacterial and first fungal BSI in the liver transplant recipients was 1.67 (95% CI: 0.79-3.15) and 0.38 (95% CI: 0.08-1.21) per 100 recipients per month, respectively, in the first-year post-transplantation.

The IR of first BSI in the first-year post-transplantation (combined bacterial and fungal BSI for the liver transplant recipients and bacterial only BSI for the kidney transplant recipients) is shown in table 2. The cumulative incidence of first BSI in the first 5 years post-transplantation for the entire group was 23.06% (95% CI, 13.89-32.23) (Figure 1).

Pathogen composition in the BSI

In the 29 BSI observed in the first 5 years post-transplantation, 16 different pathogens were isolated (Figure 2). The most common pathogens were *Enterococcus faecium* found in 4 out of 29 BSI (14%), whereas *Escherichia coli* (*E. coli*), *Klebsiella pneumoniae*, and *Candida albicans* each were found in 3 out of 29 BSI (10%). The pathogen composition differed between liver and kidney transplanted recipients (Figure 2). There were significantly more BSI with Enterobacterales in kidney transplant recipients than in liver transplant recipients (6/9 (67%) vs. 4/20 (20%), $p = 0.03$). Furthermore, *Enterococci spp.* and *Candida spp.* were only observed in liver transplant recipients constituting 6 out of 20 (30%) and 4 out of 20 (20%) of BSI in this group.

Antibiotic resistance profiles

Antibiotic resistance profiles were available for 27 out of 29 BSI (93%) (see Tables, Supplementary material content 2 and 3). Extended-spectrum- β -lactamase producing *E. coli* was observed in one BSI. There were no cultures with either methicillin-resistant *Staphylococcus aureus* or vancomycin- and/or linezolid resistant enterococci in the cohort. Among all bacterial BSI in the liver transplant recipients, 81% were susceptible to piperacillin/tazobactam and 81% to meropenem. Among all bacterial BSI in the kidney transplant recipients, 75% were susceptible to piperacillin/tazobactam and 88% to meropenem. All fungal BSI in the cohort were susceptible to fluconazole.

Outcomes after transplantation

Five out of 54 (9%) liver transplant recipients and 1 out of 31 (3%) kidney transplant recipients died during the first-year post-transplantation. Three (6 %) liver recipients were retransplanted during the first-year post-transplantation. One out of the 15 patients (7%), who develop a BSI within the first-year post-transplantation, died in the first-year post-transplantation. The probability of survival after a BSI in the first-year post-transplantation was 93% (95% CI, 82-100%) with a median follow-up of 5.0 years.

Discussion

This study was conducted to provide information about the pattern of BSI in pediatric liver and kidney transplant recipients. BSI were common with an incidence rate of 1.91 first BSI per 100 pediatric liver and kidney transplant recipients per month in the first-year post-transplantation. The BSI pathogen composition differed between liver and kidney transplant recipients with bacteria from the Enterobacterales group being more common in kidney transplant recipients whereas *Candida spp.* and *Enterococci spp.* only were observed in liver transplant recipients.

No previous studies have reported the IR of BSI in pediatric liver and kidney transplant recipients during the entire first-year post-transplantation. The overall IR of first BSI in the first-year post-transplantation in our study is comparable with data from a nationwide Spanish study of 2935 adult solid organ transplant (SOT) recipients. In this report, the overall IR was 4.8 and 3.0 BSI per 10 000 days post-transplantation in

liver and kidney transplant recipients, respectively(18) (corresponding to 1.5-0.9 BSI per 100 recipients per month). Furthermore, a recent study in adult SOT recipients showed that the IR of all infections in liver and kidney transplant recipients was highest during the early post-transplantation period and declined during the first-year post-transplantation(7). We found a similar trend in our cohort with a higher IR in the early post-transplantation period.

With regard to the pathogen composition, we found a higher frequency of BSI with Enterobacterales in kidney transplant recipients than in liver transplant recipients. Similar findings have been reported in adult liver and kidney transplant recipients where Gram-negative bacteria were the major cause of BSI in kidney transplant recipients(7,18,19). We used CDC criteria for BSI which includes bacteria that are normally considered as contaminants including coagulase-negative staphylococci(15). However, there were no BSI due to coagulase-negative staphylococci or other contaminants in our cohort. In contrast, previous studies that used CDC criteria reported as many as 30% of BSI being caused by coagulase-negative staphylococci in pediatric liver transplant recipients(6,9). Furthermore, we found only one case of *Staphylococcus aureus* which in previous retrospective studies has caused a high proportion of BSI(6,20). However, these studies were conducted in other geographical settings (Japan and the USA) where the antibiotic treatment strategies differ from the Danish approach which may, in part, explain the differences. Other explanations may include differences in surgical techniques, the use of intravenous catheters, and immunosuppression regimens between centers.

In our study, candidemia was rare and only found in liver transplant recipients with an IR of 0.38 fungal BSI per 100 recipients per month in the first-year post-transplantation. This is in line with a study exclusively investigating invasive fungal disease in 584 pediatric SOT recipients that found no invasive fungal disease in the kidney group, while 27.5 invasive fungal diseases per 100 000 patients days (corresponding to 0.85 events per month per 100 recipients) was found in the liver transplant recipients(21). However, this study only investigated invasive fungal disease in the first 180 days post-transplantation, and data for the later post-transplantation periods were not available.

Only one multidrug-resistant organism, an Extended-spectrum- β -lactamase producing *E. coli*, was observed in our cohort. This is in contrast to a study investigating severe sepsis in 173 pediatric liver transplant recipients reporting that 47.6% of the bacterial infections were with multidrug-resistant organisms(22). However, this study only included a population of highly selected pediatric liver transplant recipients admitted to the pediatric intensive care unit.

Current reviews of BSI in solid organ transplant recipients including liver and kidney transplantation recommend empiric antibiotic treatment of suspected BSI depending on local epidemiology and previous microbiology data. The antibiotic regimens should cover Gram-negative bacteria and, in the case of intravascular catheters, also Gram-positive bacteria(23,24). In our center, the current recommendation for empiric antibiotic treatment of suspected BSI in pediatric liver and kidney transplant recipients is the use of carbapenem. Our findings support the use of empiric carbapenems in pediatric kidney transplant recipients since 88% of the BSI were susceptible to carbapenem. However, for recently transplanted (<12

months) pediatric liver recipients, additional antibiotic coverage for *Enterococcus faecium* should be considered such as vancomycin or linezolid depending on local resistance patterns and previous history of vancomycin- and/or linezolid resistant enterococci.

Only one among the 15 recipients with a BSI in the first-year post-transplantation died making statistical comparisons in mortality between patients with and without BSI difficult. We found that 8% of the BSI were due to vaccine-preventable pathogens (*Streptococcus pneumoniae* (*S. pneumoniae*) and *Haemophilus influenzae*) highlighting the importance of vaccination prior to transplantation. A recent study of vaccine-preventable infections in 6980 pediatric SOT recipients reported infections with *S. pneumoniae* in 2% of the recipients and 17 times higher mortality after *S. pneumoniae* in SOT recipients compared to the general pediatric population(25).

Our study cohort included 68% of all pediatric liver and kidney transplant recipients transplanted in Denmark during the study period(26). Nevertheless, groups were small making extrapolation difficult and highlighting the need for cross-national collaborations. Another limitation to the study is the lack of data on use of immunosuppressants and intravenous catheters as well as lack of information on vaccination status. The strengths of our study include the prospective design with long post-transplantation follow-up. The microbiology database MiBa is nationwide and includes all blood cultures on the recipients sampled in both in- and outpatient facilities as well as in general practice. Furthermore, the Danish Civil Registration System(27) ensures that the vital status is continuously followed for all recipients in the cohort, and we have a near-complete follow-up. Unfortunately, patients migrating and patients from the Faroe Islands and Greenland will be lost to follow-up. However, these patients only represent a small percentage of transplanted children in Denmark. The near-complete follow-up allows us to estimate the IR of BSI in our cohort with a small risk of underestimating the rate.

This study presents incidence rates and pathogen composition for BSI following pediatric liver and kidney transplantation. We found that BSI were common, with an incidence rate of 22.5 first BSI per 100 pediatric liver and kidney transplant recipients in the first-year post-transplantation. The BSI pathogen composition differed between liver and kidney transplant recipients, and the empiric antibiotic treatment should depend on the type of transplanted organ and local epidemiology, including pathogen flora and resistance patterns.

Abbreviations

BSI, Bloodstream infections

CI, Confidence intervals

E. coli, *Escherichia coli*

eGFR, Estimated glomerular filtration rate

IR, Incidence rate

MATCH, Management of Posttransplant Infections in Collaborating Hospitals

MMF, Mycophenolate mofetil

MiBa, Danish Microbiology Database

PERSIMUNE, Centre of Excellence for Personalized Medicine of Infectious Complications in Immune Deficiency

SOT, Solid organ transplant

Spp., Species pluralis

S. pneumoniae, *Streptococcus pneumoniae*

Declarations

Ethics approval and consent to participate

The study was conducted in accordance with the declaration of Helsinki. The retrieval of the data was approved by the National Committee on Health Research Ethics (H-170024315) and the Data Protection Agency (04433, RH-2016-47). All relevant approval for this project was obtained from the Danish Health and Medicine Authorities. For this type of study, formal consent is not required according to Danish legislation.

All data was retrieved anonymized from the PERSIMUNE data repository and medical records were not accessed during the study hence no further permissions were needed for the study.

Consent for publication

Not applicable

Availability of data and materials

The datasets generated and/or analyzed during the current study are not publicly available due to restrictions from the data protection law in Denmark but the data are available to be seen in person at our institution on reasonable request.

Competing interests

OR received a grant from The Research Foundation of Rigshospitalet; ADK received a grant from The Danish Heart Foundation and a traveling grant from Gilead not related to this work; NEW received a grant from The Research Foundation of Rigshospitalet; SDN received unrestricted research grants from Novo Nordisk Foundation and Independent Research Fund (FSS) and traveling grants from Gilead and Merck not related to this work; DLM, SSS, JDK, and AR reported no conflict of interest.

Funding

This work was supported by the Novo Nordic Foundation, the Independent Research Fund (FSS), the Danish National Research Foundation (DNRF) grant no. 126, and the Research Foundation of Rigshospitalet. The funding sources were not involved in any part of the study design, data collection, data analysis, and interpretation of the data or the writing of this manuscript.

Author contributions:

DLM, SSS, NEW, OR, ADK, JDK, AR, and SDN participated in the research design. All authors collected the data. DLM and ADK did statistical analyses. DLM, OR, ADK, SDN participated in writing the manuscript. All authors revised and commented on the manuscript. All authors read and approved the final version of the manuscript.

Acknowledgments:

We kindly thank all the liver and kidney transplant recipients and donors and likewise the staff at the transplanting departments, MATCH, and PERSIMUNE for their contribution to this study.

References

1. Kim JJ, Marks SD. Long-term outcomes of children after solid organ transplantation. *Clinics (Sao Paulo)*. 2014;69 Suppl 1:28–38.
2. Jahnukainen T, Bjerre A, Larsson M, Tainio J, Thiesson HC, Jalanko H, et al. The second report of the Nordic Pediatric Renal Transplantation Registry 1997–2012: More infant recipients and improved graft survivals. *Pediatr Transplant*. 2016 May;20(3):364–71.
3. Khan D, Esquivel CO, Makowka L, Madrigal-Torres M, Yunis E, Iwatsuki S, et al. Causes of death after liver transplantation in children treated with cyclosporine and steroids. *Clin Transplant*. 1989;3:150–5.
4. Foster BJ, Dahhou M, Zhang X, Platt RW, Hanley JA. Change in mortality risk over time in young kidney transplant recipients. *Am J Transplant*. 2011 Nov;11(11):2432–42.
5. Shepherd RW, Turmelle Y, Nadler M, Lowell JA, Narkewicz MR, McDiarmid S V, et al. Risk factors for rejection and infection in pediatric liver transplantation. *Am J Transplant*. 2008 Feb;8(2):396–403.
6. Shoji K, Funaki T, Kasahara M, Sakamoto S, Fukuda A, Vaida F, et al. Risk Factors for Bloodstream Infection After Living-donor Liver Transplantation in Children. *Pediatr Infect Dis J*. 2015 Oct;34(10):1063–8.
7. van Delden C, Stampf S, Hirsch HH, Manuel O, Meylan P, Cusini A, et al. Burden and Timeline of Infectious Diseases in the First Year After Solid Organ Transplantation in the Swiss Transplant Cohort Study. *Clin Infect Dis*. 2020 Jan;
8. Dohna Schwake C, Guiddir T, Cuzon G, Benissa M-R, Dubois C, Miatello J, et al. Bacterial infections in children after liver transplantation: A single-center surveillance study of 345 consecutive

- transplantations. *Transpl Infect Dis*. 2019 Nov;*e13208*.
9. Rhee KW, Oh SH, Kim KM, Kim DY, Lee YJ, Kim T, et al. Early bloodstream infection after pediatric living donor living transplantation. *Transplant Proc*. 2012 Apr;*44*(3):794–6.
 10. Bouchut JC, Stamm D, Boillot O, Lepape A, Floret D. Postoperative infectious complications in paediatric liver transplantation: a study of 48 transplants. *Paediatr Anaesth*. 2001 Jan;*11*(1):93–8.
 11. Furuichi M, Fukuda A, Sakamoto S, Kasahara M, Miyairi I. Characteristics and Risk Factors of Late-onset Bloodstream Infection Beyond 6 Months After Liver Transplantation in Children. *Pediatr Infect Dis J*. 2018 Mar;*37*(3):263–8.
 12. Ekenberg C, da Cunha-Bang C, Lodding IP, Sørensen SS, Sengeløv H, Perch M, et al. Evaluation of an electronic, patient-focused management system aimed at preventing cytomegalovirus disease following solid organ transplantation. *Transpl Infect Dis*. 2020 Apr;*22*(2):e13252.
 13. Centre of Excellence for Personalized Medicine of Infectious Complications in Immune Deficiency (PERSIMUNE). [Internet]. [cited 2020 Jun 8]. Available from: <http://www.persimune.dk/>
 14. Voldstedlund M, Haarh M, Mølbak K. The danish microbiology database (MIBA) 2010 to 2013. *Eurosurveillance*. 2014;*19*(1).
 15. Horan TC, Andrus M, Dudeck MA. CDC/NHSN surveillance definition of health care-associated infection and criteria for specific types of infections in the acute care setting. *Am J Infect Control*. 2008 Jun;*36*(5):309–32.
 16. Centers for Disease Control and Prevention. Identifying Healthcare-associated Infections (HAI) for NHSN Surveillance [Internet]. 2020 [cited 2020 Jun 13]. Available from: https://www.cdc.gov/nhsn/PDFs/pscManual/2PSC_IdentifyingHAIs_NHSNcurrent.pdf
 17. R Development Core Team R. R: A Language and Environment for Statistical Computing. R Foundation for Statistical Computing. 2011.
 18. Moreno A, Cervera C, Gavalda J, Rovira M, De La Cámara R, Jarque I, et al. Bloodstream infections among transplant recipients: Results of a nationwide surveillance in Spain. *Am J Transplant*. 2007;*7*(11):2579–86.
 19. Silva MJ, Marra AR, Pereira CAP, Medina-Pestana JO, Camargo LFA. Bloodstream infection after kidney transplantation: epidemiology, microbiology, associated risk factors, and outcome. *Transplantation*. 2010 Sep;*90*(5):581–7.
 20. Yin S, Powell EC, Trainor JL. Serious bacterial infections in febrile outpatient pediatric kidney transplant recipients. *Pediatr Infect Dis J*. 2011 Feb;*30*(2):136–40.
 21. Saxena S, Gee J, Klieger S, Kajon A, Petersen H, Zaoutis T, et al. Invasive Fungal Disease in Pediatric Solid Organ Transplant Recipients. *J Pediatric Infect Dis Soc*. 2018 Aug;*7*(3):219–25.
 22. Alcamo AM, Alessi LJ, Vehovic SN, Bansal N, Bond GJ, Carcillo JA, et al. Severe Sepsis in Pediatric Liver Transplant Patients: The Emergence of Multidrug-Resistant Organisms. *Pediatr Crit Care Med a J Soc Crit Care Med World Fed Pediatr Intensive Crit Care Soc*. 2019 Jul;*20*(7):e326–32.

23. Guenette A, Husain S. Infectious Complications Following Solid Organ Transplantation. Crit Care Clin. 2019 Jan;35(1):151–68.
24. Kaviani A, Ince D, Axelrod DA. Management of Antimicrobial Agents in Abdominal Organ Transplant Patients in Intensive Care Unit. Vol. 7, Current Transplantation Reports. 2020. p. 1–11.
25. Feldman AG, Beaty BL, Curtis D, Juarez-Colunga E, Kempe A. Incidence of Hospitalization for Vaccine-Preventable Infections in Children Following Solid Organ Transplant and Associated Morbidity, Mortality, and Costs. JAMA Pediatr. 2019 Mar;173(3):260–8.
26. Scandiatransplant [Internet]. [cited 2020 Jun 10]. Available from: <http://www.scandiatransplant.org/>
27. Pedersen CB. The Danish Civil Registration System. Scand J Public Health. 2011 Jul;39(7 Suppl):22–5.

Tables

Table 1: *Patients characteristics*

	All liver and kidney transplant recipients n = 85	Liver and combined liver-kidney transplant recipients n = 54 (64 %)	Kidney transplant recipients n = 31 (36 %)
		51 (94%) deceased-donor liver transplantations. 3 (6%) deceased-donor combined liver and kidney transplantations. 38 (75%) were split liver transplantations.	18 (58%) deceased-donor kidney transplantations. 13 (42%) living-donor kidney transplantations.
Age at transplantation, median (range)	10.5 (0.6-17.9)	10 (0.6-17.9)	11.8 (1.7-17.9)
Sex, male (%)	42 (49%)	25 (46%)	17 (55%)
Diseases leading to transplantation, Numbers of patients (% of the patients in the transplantation group)		Cholestatic disease including biliary atresia: 17 (31%)	Obstructive uropathy: 7 (22%)
		Metabolic disease: 9 (17%)	Hypo/dysplasia of the kidneys: 4 (13%)
		Cirrhosis including alfa-1-antitrypsin deficiency and cystic fibrosis: 8 (15%)	Congenital nephrosis: 3 (10%)
		Cancer: 7 (13%)	Glomerulonephritis and vasculitis: 3 (10%)
		Acute liver failure: 5 (9%)	Other: 5 (16%)
		Autoimmune hepatitis: 5 (9%)	Unknown: 9 (29%)
		Other: 3 (6%)	

Table 2: Blood cultures and bloodstream infections

	All liver and kidney transplant recipients	Liver and combined liver- kidney transplant recipients	Kidney transplant recipients
	N = 85	N = 54	N = 31
Number of analyzed blood culture ^a (n of individual patients (% of the cohort))	883 72 (85 %)	735 47 (87 %)	148 25 (81 %)
Results of blood cultures			
- Positive	59 (7 %)	48 (7 %)	11 (7 %)
- Contamination	19 (2 %)	16 (2 %)	3 (2 %)
- Negative	805 (91 %)	671 (91 %)	134 (91 %)
Bloodstream infections ^b (n of individual patients (% of the cohort))	29 19 (22 %)	20 12 (22 %)	9 7 (23 %)
Incidence rate of first BSI per 100 patients per month in the first-year post-transplantation	1.91 (95% CI: 1.12-3.08)	2.1 (95% CI: 1.08-3.74)	1.61 (95% CI: 0.61-3.54)
Incidence rate of first BSI for all liver- and kidney transplant recipients	Per 100 patients per month		
- 1 st month	6.47 (95% CI: 2.45-14.17)		
- 2 nd -6 th month	2.55 (95% CI: 1.26-4.66)		
- 7 th -12 th month	0.45 (95% CI: 0.09-1.45)		
- 1 st year	1.91 (95% CI: 1.12-3.08)		

^a One Pediatric blood-culture flask.

^b After CDC criteria for BSI and 14 days repeat infection timeframe.

Figures

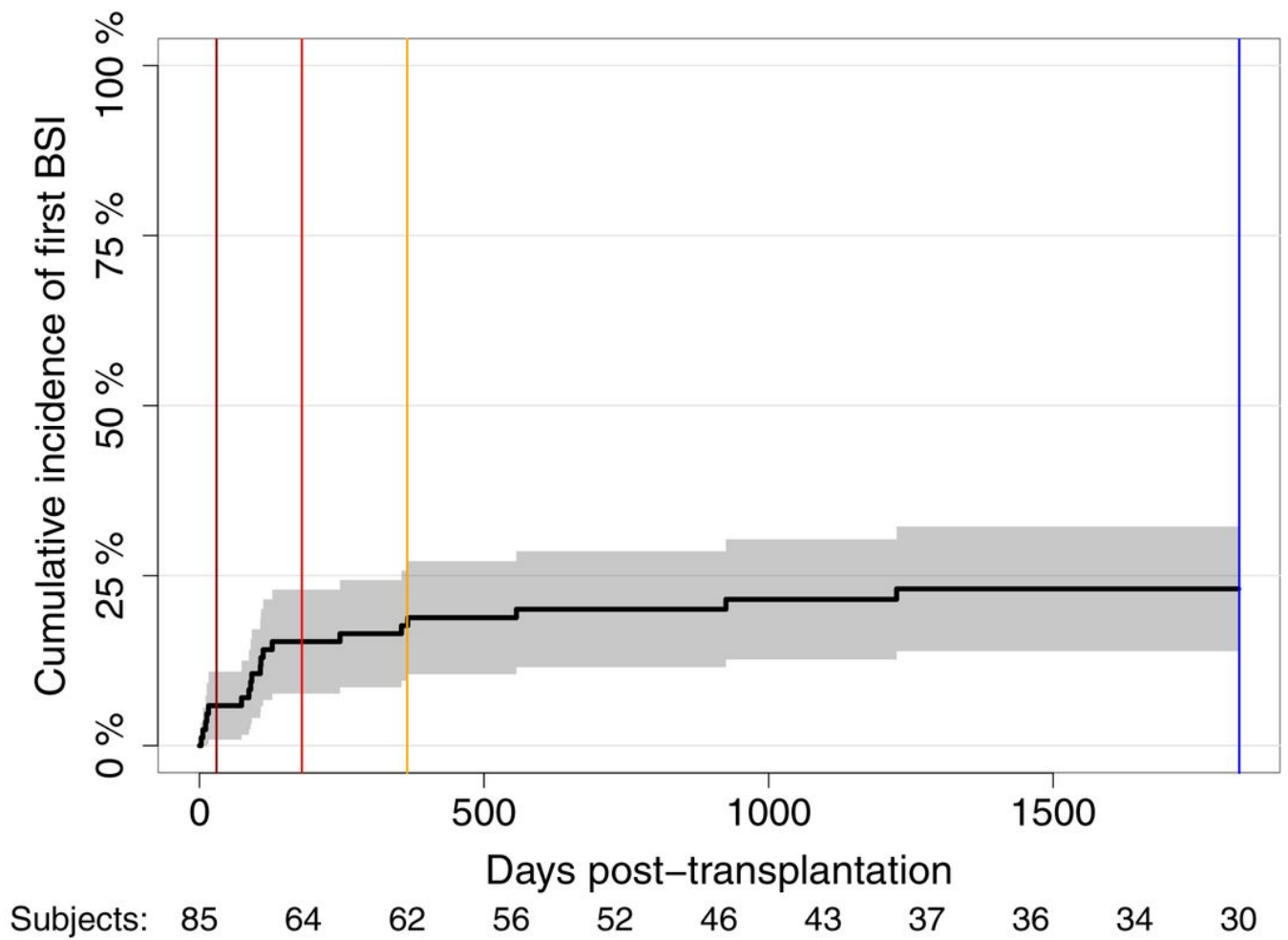


Figure 1

Cumulative incidence of first bloodstream infections (BSI) in the first 5 years post-transplantation in pediatric liver and kidney transplant recipients. Horizontal lines: Dark red is the first month, red is 6 months, yellow is the first-year, and blue is the first 5 years post-transplantation.

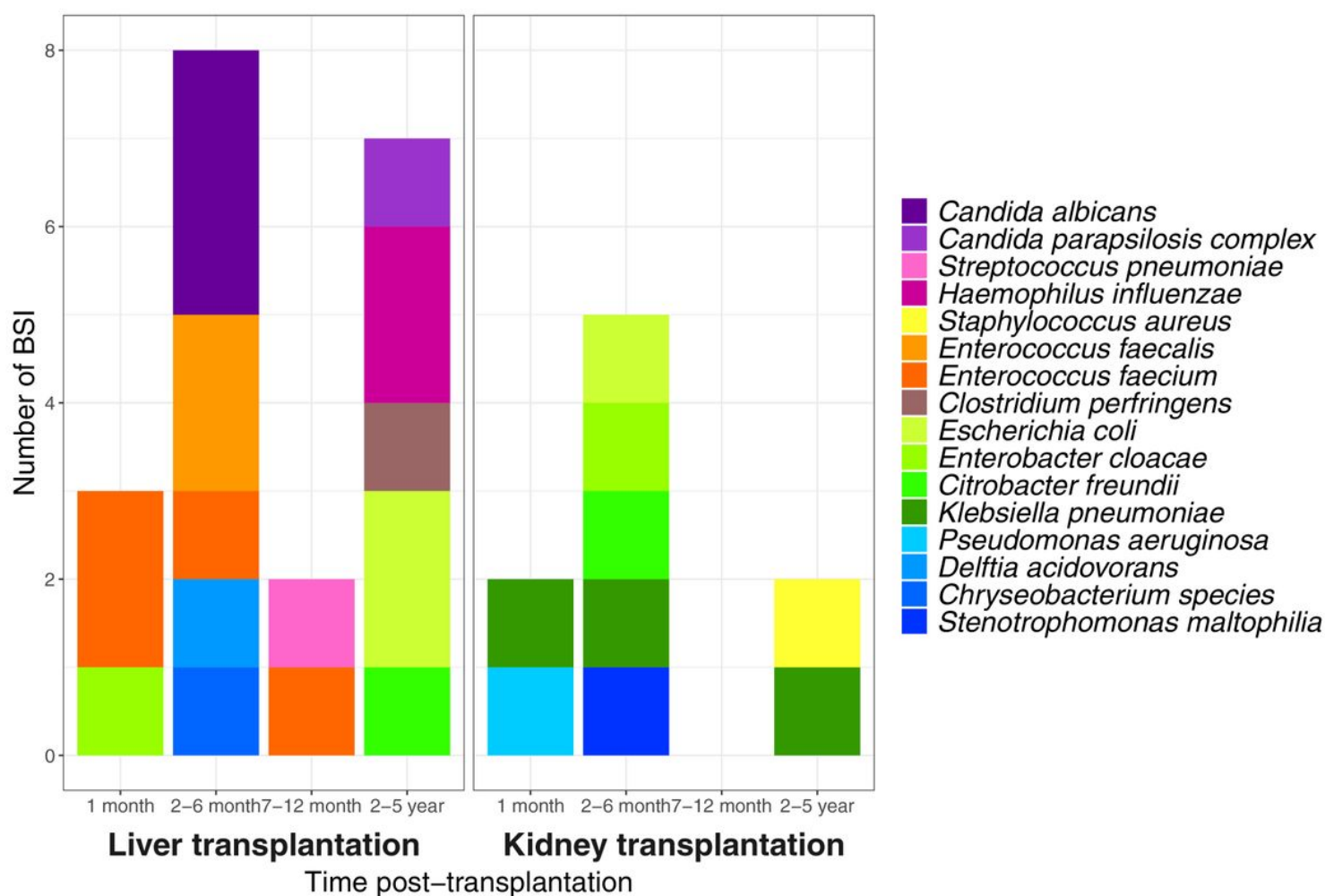


Figure 2

Pathogen composition from bloodstream infections (BSI) in pediatric liver and kidney transplant recipients in the first 5 years post-transplantation.

Supplementary Files

This is a list of supplementary files associated with this preprint. Click to download.

- [Supplementarymaterial.docx](#)