

GIS

Delphi method

Weight

Geographic

Spatio-temporal Data

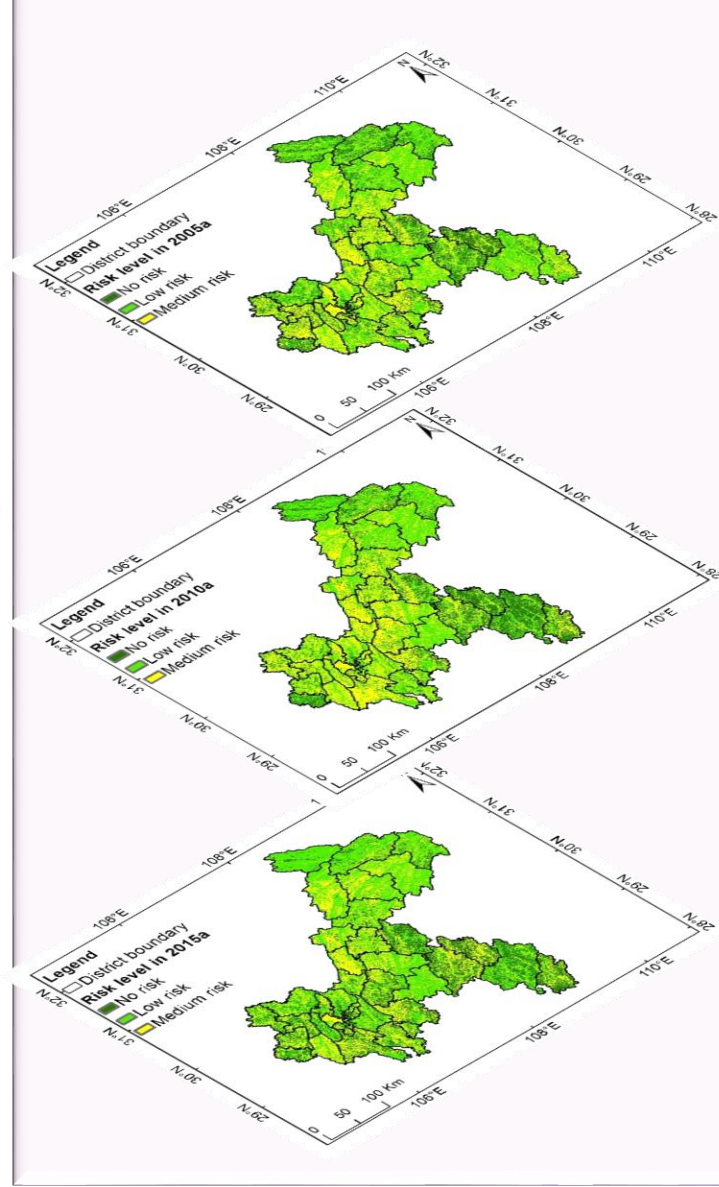
+

Panel data

ITO3dE Model

**'Input-Translate-Output'
three-dimensional evaluation model**

**The risk distribution trends of
Chongqing in 2005, 2010, and 2015.**



**Spatiotemporal transition
matrix analysis**

Kernel density analysis

Getis-Ord Gi* analysis

