

Agrobacterium tumefaciens mediated transformation of the aquatic carnivorous plant *Utricularia gibba*

Araceli Oropeza-Aburto

Centro de Investigacion y de Estudios Avanzados del Instituto Politecnico Nacional

Sergio Alan Cervantes-Perez

Centro de Investigacion y de Estudios Avanzados del Instituto Politecnico Nacional

Victor A Albert

University at Buffalo - The State University of New York

Luis Rafael Herrera-Estrella (✉ luis.herrera-estrella@ttu.edu)

Cinvestav <https://orcid.org/0000-0001-7936-3856>

Methodology

Keywords: *Agrobacterium tumefaciens*, genetic transformation, carnivorous plant

Posted Date: March 5th, 2020

DOI: <https://doi.org/10.21203/rs.2.20139/v2>

License:  This work is licensed under a Creative Commons Attribution 4.0 International License.

[Read Full License](#)

Version of Record: A version of this preprint was published at Plant Methods on April 10th, 2020. See the published version at <https://doi.org/10.1186/s13007-020-00592-7>.

Abstract

Background The genus *Utricularia* belongs to Lentibulariaceae, the largest family of carnivorous plants, which includes terrestrial, epiphytic and aquatic species. The development of specialized structures that evolved for carnivory is a feature of this genus that has been of great interest to biologists since Darwin's early studies. *Utricularia gibba* is itself an aquatic plant with sophisticated bladder traps having one of the most complex suction mechanisms for trapping prey. However, the molecular characterization of the mechanisms that regulate trap development and the biophysical processes involved in prey trapping are still largely unknown due to the lack of a simple and reproducible gene transfer system.

Results Here, we report the establishment of a simple, fast and reproducible protocol for genetic transformation of *U. gibba* based on the T-DNA of *Agrobacterium tumefaciens*. An in vitro selection system using Phosphinotricin as a selective agent was established for *U. gibba*. Plant transformation was confirmed by histochemical GUS assays and PCR and qRT-PCR analyses. We report on the expression pattern of the 35S promoter and of the promoter of a trap-specific ribonuclease gene in transgenic *U. gibba* plants.

Conclusions The genetic transformation protocol reported here is an effective method for studying developmental biology and functional genomics of this genus of carnivorous plants and advances the utility of *U. gibba* as a model system to study developmental processes involved in trap formation.

Background

Dependence on animal prey is not restricted to the animal kingdom; among the angiosperms, carnivorous plants have been reported since Darwin's early works [1,2]. Darwin was fascinated by the rapid prey capturing movements of many carnivorous plants, which he called "*the most wonderful plants in the world*" (C. Darwin, *Insectivorous plants*, p. 231) [1]. This complex trait has evolved independently at least six times across flowering plant phylogeny [3,4], where carnivorous plants are represented in five different plant orders: Poales (monocots), Caryophyllales (core eudicots), Oxalidales (rosids), Ericales and Lamiales (asterids). The extent of morphological and physiological adaptations to capture prey is extensive across taxa, involving features associated with attraction, retention, trapping and digestion of animals and absorption of nutrients from their breakdown products [5–7]. These remarkable features undoubtedly lead to an increase in fitness for species that engage in this lifestyle. However, the development of specialized structures, attractants and secretions ensuring both prey attraction and capture [8–11] appears to be costly for the plant in both energetic and metabolic terms [4].

Among carnivorous plants, the largest (around 220 species) and one of the most cosmopolitan genera is *Utricularia*, which includes terrestrial, epiphytic and aquatic species [12]. The traps, which are characteristic of the genus, are complex structures usually 1 to 6 mm long [13] that employ a complex suction mechanism to capture and digest small invertebrates [14]. Inside the bladder traps, there are two type of glands. The bifid glands, located at the entrance of the trap, are responsible for expelling water to

generate negative pressure for prey suction [13]. The quadrifid glands are involved in secretion of digestive enzymes that cover almost the entire inner trap surface [15–18]. There are few reports about digestion mechanisms inside the traps or the enzymes involved in the process. However, the presence of proteases, esterases and acid phosphatases has been reported [19–22]. Phosphatases occurring at different subcellular levels have been found in several families of carnivorous plants. In *Utricularia*, quadrifid glands play an important role in phosphatase secretion for hydrolysis of organic phosphorus compounds [20,23,24]. It has also been suggested that zooplankton communities and microorganisms inside the trap could also play an important role in the process of prey digestion [24,25].

The carnivorous lifestyle has undergone detailed study to understand genetic mechanisms underlying the habit [26,27], to discover digestive enzymes [22,28], and to explore the structure and properties of traps during prey capture [9,29,30]. Regarding molecular research, genome size studies revealed that some carnivorous plants have the smallest genomes among angiosperms. Among them, *Utricularia gibba* (ca. 100 Mbp) has the smallest known plant genome that has been corroborated by third-generation whole genome sequencing

Genetic transformation is a fundamental tool to study gene structure and function in plants. Among plant transformation systems, the Ti plasmid of *Agrobacterium tumefaciens* has been shown to be the most versatile and efficient for many different plant species. However, in carnivorous plant species, genetic transformation has so far been limited. *Agrobacterium*-mediated transformation of the carnivorous medicinal plant *Drosera rotundifolia* has been reported and used to alter naphthoquinone content [35][36]. It would be advantageous to establish transformation systems for other carnivorous plant species to facilitate refined genetic studies of their metabolism, development and evolution. *U. gibba* could emerge as an ideal model to transform, due to its genomic tools previously generated and could be interesting

Here we report the establishment of a simple, fast and reproducible transformation method for *Utricularia gibba*. This *Agrobacterium*-based system allowed us to identify a trap-specific promoter. Our work should allow the development of various molecular tools, such as overexpressing lines, RNAi lines and CRISPR/Cas9 knockout mutants [37], to study genes involved in development and differentiation of organs, particularly those involved in the development and functionality of bladder traps.

Results

Selectable marker for *U. gibba* transformation protocol

To identify an appropriate resistance gene for *U. gibba* transformation, we tested the effect of different concentrations of selective agents previously used for developing plant transformation systems, such as Hygromycin (Hyg, aminocyclitol antibiotic) [38], Kanamycin (Kan, aminoglycoside antibiotic) [39] and Glufosinate-ammonium PESTANAL (PPT) on the growth of *U. gibba* plants. Hyg and Kan inhibit protein synthesis, whereas PPT is an herbicide that inhibits glutamine synthetase, causing accumulation of toxic levels of ammonia in the cells [40]. *U. gibba* plants were grown for two weeks in liquid media containing different concentrations of these selective agents. *U. gibba* plants cultivated with 20, 40, 60 and 80 mg/l

of Kanamycin survived all concentrations during their growth kinetics. Tissues treated with 5, 10, 20 and 30 mg/l Hygromycin showed a slight yellowing and sporadic dead tissue. However, even at the highest concentration of Hygromycin, most tissue remained green and viable. By contrast, after 9 days of exposure to all concentrations of PPT (6, 10, 15 and 20 mg/l), plants showed gradual whitening, and after two weeks, all tissues were dead. We selected 10 mg/l of PPT to supplement selective media for all subsequent transformation experiments (See Additional file 1: Figure S1).

Transformation protocol

To determine whether the cytokinin benzyl amino purine (BAP) could induce a greater number of transformants by increasing *de novo* shoot formation, *U. gibba* explants were grown for a week in MS medium supplemented with 0, 0.25 or 0.75 mg/l of BAP prior to co-cultivation. Explants were then co-cultivated for 72h with an *Agrobacterium* strain carrying a binary vector containing the p35S-GUS::GFP construct. They were then transferred to PPT selective media for two weeks, each explant returning to BAP concentrations as previously described. All treatments were then transferred to selective media without BAP. Four independent biological replicates were used for each treatment. For explants incubated in media without BAP, we obtained a transformation efficiency of 0.14 transformants per gram of tissue, 0.9 for explants incubated with 0.75 mg/l of BAP, and 2.24 for media containing 0.25 mg/l BAP. Although an ANOVA test showed that there was not a significant difference between the BAP treatments, we found reproducibly higher efficiencies using 0.25 mg/l BAP in the selective media (Fig.1B). The selection procedure was very effective, as no escape events were detected. All plantlets rescued after transformation with the p35S-GUS::GFP construct showed homogeneous GUS staining and were PCR positive (Figure 3; Additional File 1: Figure S4). Moreover, the results were reproducible using the protocol with 0.25 mg/l BAP and a vector carrying a reporter gene under the control of the promoter of a previously reported gene with trap-specific expression [41].

To better understand how the genetic transformation in *U. gibba* tissue takes place, the transformation process was monitored by GUS staining during the 45 subsequent days after co-culture with *Agrobacterium*. *U. gibba* tissue was sampled from two independent experiments at 7, 18, 31, 43 and 45 days after co-culture with *Agrobacterium*. Each tissue sample was stained with X-Gluc to observe GUS expression foci in co-cultivated tissue, and representative stained tissue was selected for photography. At 7 (Figure 2a-c) and 18 days after co-culture many small regions showing clear GUS staining were observed in both meristematic and vegetative tissues (Figure 2d-f). Approximately one month after *Agrobacterium* co-culture, we observed larger sectors with homogeneous GUS staining (Figure 2g-h). After six weeks in selective medium, clearly distinguishable green sectors were observed after staining that showed homogeneous GUS activity (Figure 2 i). Application of BAP did not result in the formation of callus tissues but rather it directly promoted a more rapid *de novo* formation of meristems that developed in new plant branches that could be dissected to establish a new plant. Between seven and eight weeks of growth in selective media, green sectors that were clearly visible were dissected and separated from the original dead tissue for further propagation. Initially, we propagated three independent transgenic lines from two independent transformation experiments for further analysis. Selected putative transgenic

lines were stained to corroborate that they expressed the GUS reporter gene (Figure 2 j-m). To test whether the transgenic clones produced were stably transformed, three independent putatively transgenic clones containing p35S-GUS::GFP were sub-cultivated three times for one month in fresh media without PPT and then tested for GUS expression. We observed that the three clones maintained the expression of the GUS reporter gene after each of three subcultures (Figure 3). In all transgenic lines examined, the 35S promoter was found to directly express in stolons and leaf-like structures, as well as in the entire trap walls including antennae and trap hairs (Figure 4). No GUS or GFP expression was ever observed in wild type tissue even after long incubation times in histochemical assays (Figure 4). To confirm that GUS positive clones were indeed transgenic, we quantified the expression level of p35S-GUS::GFP in *U. gibba* tissue by Real Time PCR. Three different lines expressing GUS activity and one wild type line were analyzed. Transgenic lines displayed different levels of expression, as expected from independent lines in which T-DNA is probably inserted in different regions of the *U. gibba* genome (Figure 5a).

Plants transformed with the pRibonuclease-GUS::GFP construct show cell-type-specific expression

The development of plant transformation protocols facilitates the functional characterization of genes and their patterns of expression. To test the *U. gibba* transformation system for gene expression research, we analyzed the expression of an organ-specific gene. We previously reported the identification of genes that are specifically expressed in *U. gibba* traps, some of which could be implicated in P uptake from prey digestion [41]. Among the trap-specific genes, we selected one that was very strongly expressed (See Additional file 1: Figure S2). This gene, originally identified as unitig_26.g10301.t1 in the *U. gibba* genome, was renamed UgRibT2-1. It encodes a protein that is a member of the Ribonuclease-related protein family HOM04D000621. This family has a conserved Ribonuclease_T2 protein domain, and is encoded by 5 genes in *A. thaliana*, 7 in *S. lycopersicum* and 3 in *U. gibba* (<https://bioinformatics.psb.ugent.be/plaza>; See Additional file 1: Figure S2). Among the biological functions assigned to this RNase family is phosphate and nitrogen nutrition. In order to compare the expression patterns of UgRibT2-1 and its putative orthologs in Arabidopsis (AT1G14210) and tomato (Solyc05g007940), we examined the expression data available in the developmental maps of the EFP browser (<https://bar.utoronto.ca/efp/cgi-bin/efpWeb.cgi>; http://bar.utoronto.ca/efp_tomato/cgi-bin/efpWeb.cgi). We found that AT1G14210 and Solyc05g007940 are expressed at low levels in different tissues at several developmental stages; however, both genes are strongly expressed in roots. The 5'-upstream intergenic region of UgRibT2-1 is 1514 nucleotides, which we selected as the promoter region. *In silico* characterization to search for DNA motifs showed that 2 copies of P1BS are present in the UgRibT2-1 5' flanking sequences. P1BS is the cognate binding site for PHR1, one of the master regulators of the low-phosphate response in different plant species. Interestingly, the promoter region of AT1G14210 is small and lacks P1BS DNA motifs. However, we found other DNA motifs shared between the promoter regions of UgRibT2-1, AT1G14210 and Solyc05g007940: cognate binding sites for transcription factors of the MYB, bZIP and Homeobox gene families (See Additional file 1: Figure S3). To determine the expression patterns directed by UgRibT2-1 promoter, we created a transcriptional fusion between this promoter and a *Uida* (GUS)-GFP reporter gene, which we named pRib-GUS::GFP. Using the transformation system reported above, we generated 8 independent transgenic *U. gibba* lines harboring the UgRib-GUS-

GFP construct. Transgenic UgRib-GUS-GFP plants were subjected to histochemical GUS analysis and confocal microscopy to detect the presence of GFP. We found that ribonuclease promoter expression was specific to the trap, more precisely to specialized quadrifid gland cells (Figure 4c, h, i). These cells are involved in transport, digestion and absorption of prey-derived nutrients inside the trap. Therefore, we propose that UgRibT2-1 has a role in nucleic acid degradation during prey digestion (Figure 5b).

To quantify the expression level of pRib-GUS::GFP and compare it with UgRibT2-1 in *U. gibba* plants, real time PCR analysis was performed. RNAs extracted from transgenic lines were analyzed after collecting traps and vegetative tissue separately. We found that the level of expression directed by the UgRibT2-1 promoter is over 2000 times higher in traps than in vegetative tissues, whereas pRib-GUS::GFP expressed 10 times greater in traps than vegetative tissue. Although the pRib promoter did direct the expected trap-specific expression pattern, its lower expression strength suggests that regulatory elements of the pRib promoter important to determining expression level are missing in the 1500 bp that we used as pRib promoter. Since this promoter includes all of the 5' flanking intergenic region of RibT2-1, it is possible that an enhancer element is present inside the transcribed region of this gene (Figure 5b).

Detection of *UidA* (GUS) and phosphinothricin acetyl transferase (BAR) in *U. gibba* transgenic lines

To confirm that transgenes were integrated into the *U. gibba* genome, DNA from 5 lines each of p35S-GUS::GFP and pRib-GUS::GFP and 3 plants of wild type were isolated. In transgenic lines, 332pb and 428pb fragments were amplified corresponding to *UidA* (GUS) and BAR amplicons. In wild type lines, these fragments were not observed. As a positive control, a 239 bp fragment was synthesized corresponding to an endogenous Ubiquitin gene, which can be observed in both transgenic and untransformed control lines (Additional file 1: Figure S4).

Discussion

Gene transfer technology in plants has become an indispensable tool to study plant biology and functional genomics. Transformation protocols have been developed for many plant species, but because of the complexity of tissue culture procedures involved or the lack of reproducibility, many of these protocols are not widely adopted. Therefore, when developing a plant transformation system, one should aim to generate a simple, inexpensive and reproducible transformation system to facilitate broad adoption of the new technology. Here, we report the development of a simple, rapid and reproducible system for genetic transformation of *U. gibba*. Taking advantage of vegetative propagation of this carnivorous plant, production of homogeneously transformed plants can be easily achieved. Although the efficiency of the *U. gibba* transformation protocol reported here can likely be further optimized, in less than 3 months, starting with sufficient propagated tissue, several independent transgenic lines of at least 5 to 10 different constructs can be easily produced. By dissecting the original transgenic material obtained by the PPT selection procedure, large amounts of tissue for different assays or gene expression studies can be generated in one to two months. Our transformation protocol could in principle be used to generate knock-out mutants using the CRISPR/Cas genome editing system [37].

Using this transformation system, we have shown that the CaMV 35S promoter can be expressed in vegetative tissue of *U. gibba*. We also examined expression directed by the promoter of the UgRibT2-1 gene. This encodes a type T2 ribonuclease that is most probably secreted inside the *U. gibba* traps, as its coding sequences contain a secretion peptide at its N-terminus. We found that expression of pRib-GUS::GFP is specific to quadrifid cells that are located in the inner parts of traps. Quadrifid gland cells have been proposed to play an important role in prey digestion; they secrete digestive enzymes and are also where nutrient uptake takes place [20,24]. The finding that UgRibT2-1 encodes a ribonuclease potentially involved in hydrolyzing nucleic acids supports the aforementioned notion that quadrifid cells play an important role in prey digestion. Ribonuclease activity in these cells could lead to digestion and subsequent assimilation of phosphorus released from the remains of the prey. In the carnivorous plant *Nepenthes*, RNase activity was demonstrated when spinach RNA was added to trap fluid [42]. Under these conditions, expression of ribonuclease NvRN1 was demonstrated in pitcher tissues. Activity of hydrolases was also reported in both empty and fed traps of *U. gibba*, suggesting that expression of relevant genes and translation of digestive enzymes is continuous in traps [24]. In tomato, ribonucleases expressed in the root play an important role during phosphate starvation, facilitating scavenging of organic sources of Pi present in the rhizosphere [43]. It is interesting that a ribonuclease expressed in *Arabidopsis* and tomato roots is expressed in the trap of the rootless *U. gibba*, perhaps suggesting that many of the nutrient uptake functions of root systems were re-deployed in the traps of these carnivorous plants. Moreover, analysis of the microbiome of the *U. gibba* traps showed that many bacterial species normally present in the plant rhizosphere are present in *U. gibba* traps [25]. It has been reported that secretory ribonucleases play an important role in phosphate and nitrogen scavenging in the gut of humans and zebrafish [44]. In connection, we hypothesize that the UgRib-T2.1 could have acquired dual functions, as is the case of animals and plants.

Note: While this work was being prepared for publication another group reported a transformation protocol for *U. gibba* using solid media [45,46]. Our work uses an alternative system in liquid media that leads to rapid recovery and propagation of transformed plants.

Conclusions

We developed a simple and rapid method for genetic transformation of *U. gibba* that allows production of transgenic lines in less than 3 months. Genetic transformation of *U. gibba*, together with access to a reference genome and comprehensive transcriptomic data, should facilitate the use of *U. gibba* as a model system to study the complex developmental processes involved in trap development, and to study nutrient uptake in a rootless plant [28,32]. Additionally, *U. gibba* could be used as a heterologous expression system for expression of orthologous genes of other carnivorous or aquatic plants. Of these plant groups, genomes for *Cephalotus follicularis* and water lily were recently completely sequenced [27,47]. The transformation system of *U. gibba* could be powerful for functional genomics and evolutionary studies in these important plant genomes. One of the most important advantages of the *U. gibba* genome is the fact that it is very compact, but contains the full gene repertoire required for a fully functional, flowering plant.

Materials And Methods

Plant Material and propagation

Utricularia gibba seeds were collected near Umécuaro, Michoacán, México. A culture was established from seeds that were disinfected with 70% ethanol for 3 minutes, thereafter 20% v/v bleach in water for 7 min, followed by sterile water washes. Seeds were then germinated in ¼ MS liquid medium supplemented with 2% sucrose and grown in Percival chambers with 16 h light and 8 h darkness at 22°C. Once the culture was established, *Utricularia* tissue was sub-cultured to 70 ml of ¼ MS medium in glass bottles of 220 ml of capacity every 4 to 6 weeks in order to maintain culture freshness.

Selection of candidate gene for *U. gibba* transformation

From RNA-seq data recently reported (Cervantes-Pérez et al., in press), we selected genes with strong and specific expression in the traps. The gene unitig_26.g10301.t1 (CoGe: GeneModels_PacBioAssembly4.gff (vv1.1); Genome: PacBio v1.1 (vPacBio v1.1) gid: 28048) was the chosen candidate because of its high expression in trap tissue transcriptomes. In order to characterize the putative function of this gene, we performed an analysis of gene family conservation in the web-tool PLAZA (<https://bioinformatics.psb.ugent.be>). Then we made a homology sequence search against Arabidopsis and tomato in CoGe (<https://genomevolution.org/CoGe/CoGeBlast.pl>) and the Sol Genomics Network (solgenomics.net). Additionally, in the tool GEvo, synteny between these genes was checked (<https://genomevolution.org/r/19pyx>), and protein domain conservation was checked in HMMER (<https://www.ebi.ac.uk>) (See Additional file 1: Figure S2). By synteny and homology, we determined this gene to encode an *Utricularia gibba* ribonuclease. Promoter analysis was performed in the MEME suite (<http://meme-suite.org/>).

Plasmid constructions

Oligonucleotides were designed to amplify the 35S promoter from vector pFAST G02 (VIB UGENT for Plant Systems Biology) and cloned in pDONR221 (Invitrogen) using a GATEWAY BP enzyme (Invitrogen). The construct was then transferred into the destination vector pBGWFS7 (VIB UGENT for Plant Systems Biology) by GATEWAY LR Kit (Invitrogen) to generate a transcriptional fusion driving GUS-GFP expression (See Additional file 4). Oligonucleotides were designed to amplify the *Utricularia* ribonuclease promoter (See Additional file 1: Table S1). The resulting DNA fragment was first cloned into pDONR221 and then transferred to pBGWFS7 by GATEWAY technology. Both transcriptional fusions p35S-GUS::GFP and pRib-GUS::GFP (the *U. gibba* Ribonuclease promoter) were transformed into *Agrobacterium tumefaciens* by electroporation using BIO-RAD Micropulser equipment and used to obtain *U. gibba* transgenic lines.

Selective Medium

To establish a system of selection for *U. gibba*, MS liquid medium, supplemented with different concentrations of Glufosinate-ammonium PESTANAL (45520 Sigma) 6, 10, 15 and 20 mg /l, were used to

test for inhibition of *U. gibba* growth in petri dishes.

Genetic Transformation To generate tissue for transformation experiments, *U. gibba* was cultivated in 220 ml flasks with 70 ml of liquid MS media for one month. Thereafter, tissue was collected and placed on sterile paper towels to remove excess moisture, and fresh weight was determined to calculate the number of transformants per gram of fresh weight of initial material. Approximately one gram of *U. gibba* tissue was then transferred for one week to 250 ml Erlenmeyer flasks with 70 ml of fresh MS liquid medium supplemented with Benzilaminopurine (BAP) 0.25 mg/l. After one week in media with BAP, all vegetative mass was collected and cut with a sharp scalpel into approximately 5 mm pieces; about 300 pieces per gram of fresh weight tissue. For co-cultivation, 5 ml of *Agrobacterium tumefaciens* strain GPV 2260 culture was grown overnight at OD₆₀₀ = 1, centrifuged, washed with MS medium and resuspended into 0.5 ml of MS media. Fragments of *U. gibba* tissue were returned into 250 ml flasks with 70 ml of fresh MS media and inoculated with 0.5 ml of concentrated *Agrobacterium* suspension for co-culture. Acetosiringone (100 µM), glutamic acid (300 mg/l) and casamino acids (1 g/L) were also added for proper bacterial growth. After three days in an orbital shaker, the *Utricularia-Agrobacterium* co-culture was washed with sterile water and then distributed among four 90 mm x 25 mm Petri dishes with 24 ml of selection MS liquid medium supplemented with BAP (0.25 mg/l), glufosinate ammonium (10 mg/l) and cefatoxime (250 mg/l) to allow bacterial control. Two weeks after co-culture, tissue was subcultured in MS medium with PPT, cefatoxime and without BAP in order to allow elongation of primordial shoots that formed. Regenerated transgenic tissue was subcultivated every 15 days in selective MS liquid medium three additional times.

Histochemical GUS assay

Transgenic and nontransgenic *U. gibba* tissues were incubated in GUS reaction buffer (0.5 mg/mL of 5-bromo-4-chloro-3-indolyl-b-D-glucuronide in 100 mM sodium phosphate, pH 7.0) overnight at 37°C. The tissues were cleared by the Malamy and Benfey method [48] and observed and photographed using Nomarski optics in a Leica DMR microscope and a SZH10 Olympus stereomicroscope.

Utricularia DNA isolation and PCR analysis

Tissues from *U. gibba* wild type and transgenic lines carrying the p35S-GUS::GFP and pRib-GUS::GFP were collected, frozen in liquid nitrogen and ground to isolate total DNA using the DNeasy Power Plant Pro Kit from Qiagen. 5 ng of DNA from each sample was used for PCR reactions in a Veriti instrument from Applied Biosystems. The PCR amplification conditions were as follows: for the GUS gene, 1:30 min at 94°C, and 35 cycles at 94°C for 30 s, 60°C for 20 s and 72°C for 30 s. For the BAR gene and Ubiquitin genes, 1:30 min at 94 °C, and 35 cycles at 94°C for 30 s, 65°C for 20 s and 72°C for 25 s.

Real Time quantitative reverse transcription PCR analysis

U. gibba wild type and transformed plants carrying the p35S-GUS::GFP were sub-cultured in ¼ MS medium for a week in order to obtain a fresh culture growing in optimal conditions. Then tissue was

collected, frozen and ground to isolate total RNA using Trizol Reagent (Life Technologies). *U. gibba* plants transformed with pRib-GUS::GFP were grown in medium 0.1X MS for a week, so that the culture was fresh. Afterward, vegetative tissue and traps were collected separately, frozen and ground as previously described. For RNA isolation from trap tissue, the Direct-zol RNA miniprep from Zymo Research kit was used. 500 ng of each RNA was used to carry out the reverse transcription reaction with SuperScript III reverse transcriptase (Invitrogen), following the manufacturer's protocol. The qPCR was performed in MIC (Magnetic Induction Cyclers from Biomolecular Systems) equipment using specific primers (See Additional file 5:) and the reagent SensiFast TM SYBR No-ROX Kit from Bioline. The PCR conditions were 95°C for 2 min, followed by 40 cycles of 95°C for 5 sec, 65°C for 10 sec and 72°C for 20 sec. The abundances of the GUS gene and UgRibT2-1 were calculated relative to the Ubiquitin gene for each sample.

Declarations

Ethics approval and consent to participate

Not applicable

Consent for publication

Not applicable

Availability of data and materials

Data sharing not applicable to this article, as no datasets were generated in the current study.

Competing interests

The authors declare that they have no competing interests

Funding

This work was supported in part by grants from the Basic Science program from CONACyT (Grant 00126261), the Governor University Research Initiative program (05-2018) from the State of Texas, and by a Senior Scholar grant from Howard Hughes Medical Institute (grant 55005946) to L.H.-E.

Authors' contributions

L.H-E and A.O-A. designed the project. A.O-A. and S.C-P. carried out all experimental work. V.A.A. helped provide DNA sequence data. L.H-E, A.O-A. and S.C-P analyzed data. L.H-E, A.O-A., S.C-P, and V.A.A wrote the manuscript.

ACKNOWLEDGMENTS

We thank Enrique Hurtado Bautista for help in designing figures and illustrations, Mylea Lovell for critically editing the manuscript and Enrique Ibarra Laclette for *Utricularia* culture establishment. S.C-P is indebted to CONACyT Mexico for a PhD fellowship. This work was supported in part by grants from the Basic Science program from CONACyT (Grant 440 00126261), the Governor University Research Initiative program (05-2018) from the State of Texas, and by a Senior Scholar grant from Howard Hughes Medical Institute (grant 55005946) to L.H.-E.

References

1. Darwin Charles, 1875. Insectivorous Plants. London: Appleton and Company;
2. Adamec L. Mineral Nutrition of Carnivorous Plants: A Review. Bot Rev. 1997;63:273–99.
3. Albert VA, Williams SE, Chase MW. Carnivorous plants: Phylogeny and structural evolution. Science (80-). 1992;257:1491–5.
4. Ellison AM, Gotelli NJ. Energetics and the evolution of carnivorous plants - Darwin's "most wonderful plants in the world." J Exp Bot. 2009;60:19–42.
5. Müller KF, Borsch T, Legendre L, Porembski S, Barthlott W. Recent progress in understanding the evolution of carnivorous Lentibulariaceae (Lamiales). Plant Biol. 2006;8:748–57.
6. Chase MW, Christenhusz MJM, Fay MF, Byng JW, Judd WS, Soltis DE, et al. An update of the Angiosperm Phylogeny Group classification for the orders and families of flowering plants: APG IV. Bot J Linn Soc. 2016;181:1–20.
7. Givnish TJ. New evidence on the origin of carnivorous plants. Proc Natl Acad Sci U S A. 2015;112:10–1.
8. Bohn HF, Federle W. Insect aquaplaning: Nepenthes pitcher plants capture prey with the peristome, a fully wettable water-lubricated anisotropic surface. Proc Natl Acad Sci U S A. 2004;101:14138–43.
9. Jürgens A, El-Sayed AM, Suckling DM. Do carnivorous plants use volatiles for attracting prey insects? Funct Ecol. 2009;23:875–87.
10. Merbach MA, Merbach DJ, Maschwitz u, Booth WE, Fiala B ZG, Nature, 2002, 415, 36-37. Carnivorous plants: mass march of termites into the deadly trap.
11. Król E, Płachno BJ, Adamec L, Stolarz M, Dziubińska H, Trebacz K. Quite a few reasons for calling carnivores "the most wonderful plants in the world." Ann Bot. 2012;109:47–64.
12. Müller K, Borsch T, Legendre L, Porembski S, Theisen I, Barthlott W. Evolution of carnivory in lentibulariaceae and the lamiales. Plant Biol. 2004;6:477–90.
13. Adamec L. The smallest but fastest: Ecophysiological characteristics of traps of aquaticcarnivorous Utricularia. Plant Signal Behav. 2011;6:637–43.
14. Vincent O, Marmottant P. Carnivorous Utricularia: The buckling scenario. 2011;6:1752–4.
15. Ellison AM, Adamec L. Ecophysiological traits of terrestrial and aquatic carnivorous plants: Are the costs and benefits the same? Oikos. 2011;120:1721–31.

16. Chormanski TA, Richards JH. An architectural model for the bladderwort *Utricularia gibba* (Lentibulariaceae) 1. *J Torrey Bot Soc.* 2012;139:137–48.
17. Juang TCC, Juang SDC, Liu ZH. Direct evidence of the symplastic pathway in the trap of the bladderwort *Utricularia gibba* L. *Bot Stud.* 2011;52:47–54.
18. Fineran BA, Lee MSL. *Utricularia monanthos*. *Protoplasma.* 1975;84:43–70.
19. C. V, *Biol.Ser.A PA*, 1974, 14, 463-471. Ultrastructural and cytochemical observations on the digestive glands of *Utricularia neglecta* L. (Lentibulariaceae). Distribution of protease and acid phosphatase activities.
20. Adamec L, Sirová D, Vrba J, Rejmánková E. Enzyme production in the traps of aquatic *Utricularia* species. *Biologia (Bratisl).* 2010;65:273–8.
21. Thornhill AH, Harper IS, Hallamz ND. The development of the digestive glands and enzymes in the pitchers of three *Nepenthes* species: *N. alata*, *N. tobaica*, and *N. ventricosa* (Nepenthaceae). *Int J Plant Sci.* 2008;169:615–24.
22. Ravee R, Salleh FIM, Goh HH. Discovery of digestive enzymes in carnivorous plants with focus on proteases. *PeerJ.* 2018;2018.
23. Płachno BJ, Adamec L, Lichtscheidl IK, Peroutka M, Adlassnig W, Vrba J. Fluorescence labelling of phosphatase activity in digestive glands of carnivorous plants. *Plant Biol.* 2006;8:813–20.
24. Sirová D, Adamec L, Vrba J. Enzymatic activities in traps of four aquatic species of the carnivorous genus *Utricularia*. *New Phytol.* 2003;159:669–75.
25. Alcaraz LD, Martínez-Sánchez S, Torres I, Ibarra-Laclette E, Herrera-Estrella L. The metagenome of *utricularia gibba*'s traps: Into the microbial input to a carnivorous plant. *PLoS One.* 2016;11:1–21.
26. Bemm F, Becker D, Larisch C, Kreuzer I, Escalante-Perez M, Schulze WX, et al. Venus flytrap carnivorous lifestyle builds on herbivore defense strategies. *Genome Res.* 2016;26:812–25.
27. Fukushima K, Fang X, Alvarez-Ponce D, Cai H, Carretero-Paulet L, Chen C, et al. Genome of the pitcher plant *Cephalotus* reveals genetic changes associated with carnivory. *Nat Ecol Evol.* 2017;1:1–9.
28. Lan T, Renner T, Ibarra-Laclette E, Farr KM, Chang T-H, Cervantes-Pérez SA, et al. Long-read sequencing uncovers the adaptive topography of a carnivorous plant genome. *Proc Natl Acad Sci [Internet]*. 2017;114:E4435 LP-E4441. Available from: <http://www.pnas.org/content/114/22/E4435.abstract>
29. Wang L, Zhou Q, Zheng Y, Xu S. Composite structure and properties of the pitcher surface of the carnivorous plant *Nepenthes* and its influence on the insect attachment system. *Prog Nat Sci [Internet]*. National Natural Science Foundation of China and Chinese Academy of Sciences; 2009;19:1657–64. Available from: <http://dx.doi.org/10.1016/j.pnsc.2009.09.005>
30. Adamec L. Functional characteristics of traps of aquatic carnivorous *Utricularia* species. *Aquat Bot.* 2011;95:226–33.
31. Greilhuber J, Borsch T, Müller K, Worberg A, Porembski S, Barthlott W. Smallest angiosperm genomes found in Lentibulariaceae, with chromosomes of bacterial size. *Plant Biol.* 2006;8:770–7.

32. Ibarra-Laclette E, Lyons E, Hernández-Guzmán G, Pérez-Torres CA, Carretero-Paulet L, Chang TH, et al. Architecture and evolution of a minute plant genome. *Nature*. 2013;498:94–8.
33. Leushkin E V, Sutormin RA, Nabieva ER, Penin AA, Kondrashov AS, Logacheva MD. The miniature genome of a carnivorous plant *Genlisea aurea* contains a low number of genes and short non-coding sequences. *BMC Genomics*. 2013;14.
34. P T, 1989, Bulletin. K, 14 AS. The genus *Utricularia*: a taxonomic monograph.
35. Hirsikorpi M, Kämäräinen T, Teeri T, Hohtola A. Agrobacterium-mediated transformation of round leaved sundew (*Drosera rotundifolia* L.). *Plant Sci*. 2002;162:537–42.
36. Krolicka A, Szpitter A, Stawujak K, Baranski R, Gwizdek-Wisniewska A, Skrzypczak A, et al. Teratomas of *Drosera capensis* var. *alba* as a source of naphthoquinone: Ramentaceone. *Plant Cell Tissue Organ Cult*. 2010;103:285–92.
37. Jaganathan D, Ramasamy K, Sellamuthu G, Jayabalan S, Venkataraman G. CRISPR for crop improvement: An update review. *Front Plant Sci*. 2018;9:1–17.
38. Blochliger K, Diggelmann H. Hygromycin B phosphotransferase as a selectable marker for DNA transfer experiments with higher eucaryotic cells. *Mol Cell Biol*. 1984;4:2929–31.
39. Mentewab A, Stewart CN. Overexpression of an *Arabidopsis thaliana* ABC transporter confers kanamycin resistance to transgenic plants. *Nat Biotechnol*. 2005;23:1177–80.
40. Wendler C, Barniske M, Wild A. Effect of phosphinothricin (glufosinate) on photosynthesis and photorespiration of C3 and C4 plants. *Photosynth Res*. 1990;24:55–61.
41. Ibarra-Laclette E, Albert VA, Pérez-Torres CA, Zamudio-Hernández F, Ortega-Estrada M de J, Herrera-Estrella A, et al. Transcriptomics and molecular evolutionary rate analysis of the bladderwort (*Utricularia*), a carnivorous plant with a minimal genome. *BMC Plant Biol*. 2011;11.
42. Stephenson P, Hogan J. Cloning and characterization of a ribonuclease, a cysteine proteinase, and an aspartic proteinase from pitchers of the carnivorous plant *Nepenthes ventricosa* blanco. *Int J Plant Sci*. 2006;167:239–48.
43. Köck M, Stenzel I, Zimmer A. Tissue-specific expression of tomato Ribonuclease LX during phosphate starvation-induced root growth. *J Exp Bot*. 2006;57:3717–26.
44. Hillwig MS, Rizhsky L, Wang Y, Umanskaya A, Essner JJ, MacIntosh GC. Zebrafish RNase T2 genes and the evolution of secretory ribonucleases in animals. *BMC Evol Biol*. 2009;9:1–14.
45. Lee KJI, Bushell C, Koide Y, Fozard JA, Piao C, Yu M, et al. Shaping of a three-dimensional carnivorous trap through modulation of a planar growth mechanism. 2019.
46. Whitewoods CD, Gonçalves B, Cheng J, Cui M, Kennaway R, Lee K, et al. Evolution of carnivorous traps from planar leaves through simple shifts in gene expression. *Science* (80-). 2020;367:91–6.
47. Zhang L, Chen F, Zhang X, Li Z, Zhao Y, Lohaus R, et al. The water lily genome and the early evolution of flowering plants. *Nature* [Internet]. Springer US; 2020;577:79–84. Available from: <http://dx.doi.org/10.1038/s41586-019-1852-5>

48. Malamy JE, Benfey PN. Organization and cell differentiation in lateral roots of *Arabidopsis thaliana*. Development. 1997;124:33–44.

Additional File Information

Additional file 1: Figure S1. Selection markers for *U. gibba* in vitro culture.

Utricularia tissue exposed to different concentrations and selection markers, observed and photographed at 9 day in MS culture. Tissue placed in Glufosinate-ammonium PESTANAL at 6,10,15 and 20 mg/l showed bleaching and dead tissue in all treatments. *Utricularia* tissue subjected to Kanamycin showed no effect in viability, and green tissue was observed at 20, 40, 60 and 80 mg/l. At low Hygromycin concentrations (5, 10 and 20 mg/), *U. gibba* remained green and alive, while at 30 mg/l, dead tissue was observed. Wild type *Utricularia* photographs as experimental controls are shown. Scale bar, 1 cm.

Additional file 1: Figure S2. Ribonuclease gene of *U. gibba*. a) Conserved 645 protein domain structure among putative orthologs of Ribonuclease T2 genes in *Arabidopsis*, tomato and *U. gibba*. The graphic represents the conserved Ribonuclease_T2 domain in the three proteins. b) Expression levels of the *U. gibba* Ribonuclease gene (unitig_26.g10301.t1) in 10 RNA-Seq vegetative tissue and one trap libraries. On the Y axis we show transcripts per million for each library and on the X axis each condition is shown.

Additional file 1:Figure S3. *In silico* promoter analysis of Ribonuclease T2 genes. For each analysis the name of promoter region, confidence level for identifications and motif locations along the region are represented. Colored blocks indicate DNA motif type identified in the MEME software suite.

Additional file 1: Figure S4

DNA of five independent transgenic p35S-GUS::GFP and pRib-GUS::GFP lines and 3 independent WT lines was isolated and PCR reaction performed. A 332 bp fragment for the UidA gene and 428 bp for the BAR gene of transformed lines are shown. A 239 bp fragment for Ubiquitin gene as the control in transgenic and non-transgenic lines is also shown. The GeneRuler 1Kb Plus DNA Ladder (Thermo Scientific) was used.

Abbreviations

BAP Benzilaminopurine

PPT Phosphinothricin

Figures

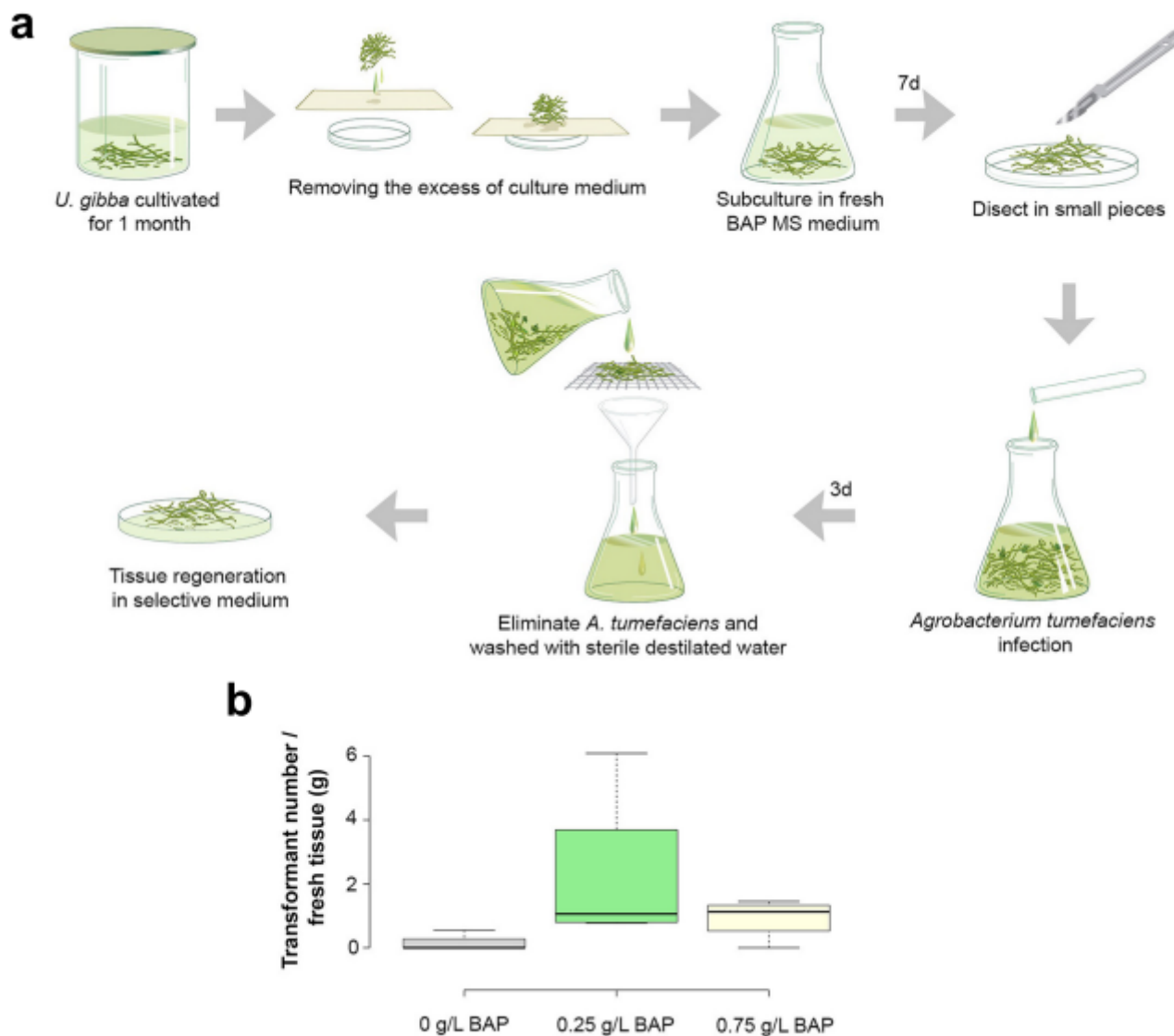


Figure 1

Protocol and transformation efficiency a) Diagram illustrating the protocol used for *U. gibba* transformation. *U. gibba* tissue, propagated for 1 month in liquid media, was collected and placed on absorbent paper to remove excess liquid. Collected tissue was grown for an additional week in fresh MS media containing BAP and then cut into small pieces with a scalpel. The segments of *U. gibba* tissue were transferred to MS with BAP and inoculated with an *Agrobacterium* culture overnight for co-cultivation. After 3 days of co-culture in continuous agitation, *Agrobacterium* was removed by filtering *U. gibba* tissue through a plastic mesh, followed by sterile water washes. Clean *U. gibba* tissue was placed in selective medium containing an antibiotic to kill remaining bacterial cells. b) Box plot showing the number of transformants per gram of fresh weight carrying the p35S-GUS::GFP construct that were obtained when tissue was exposed to different concentrations of BAP. The results represent the means and standard deviations of four independent experiments.

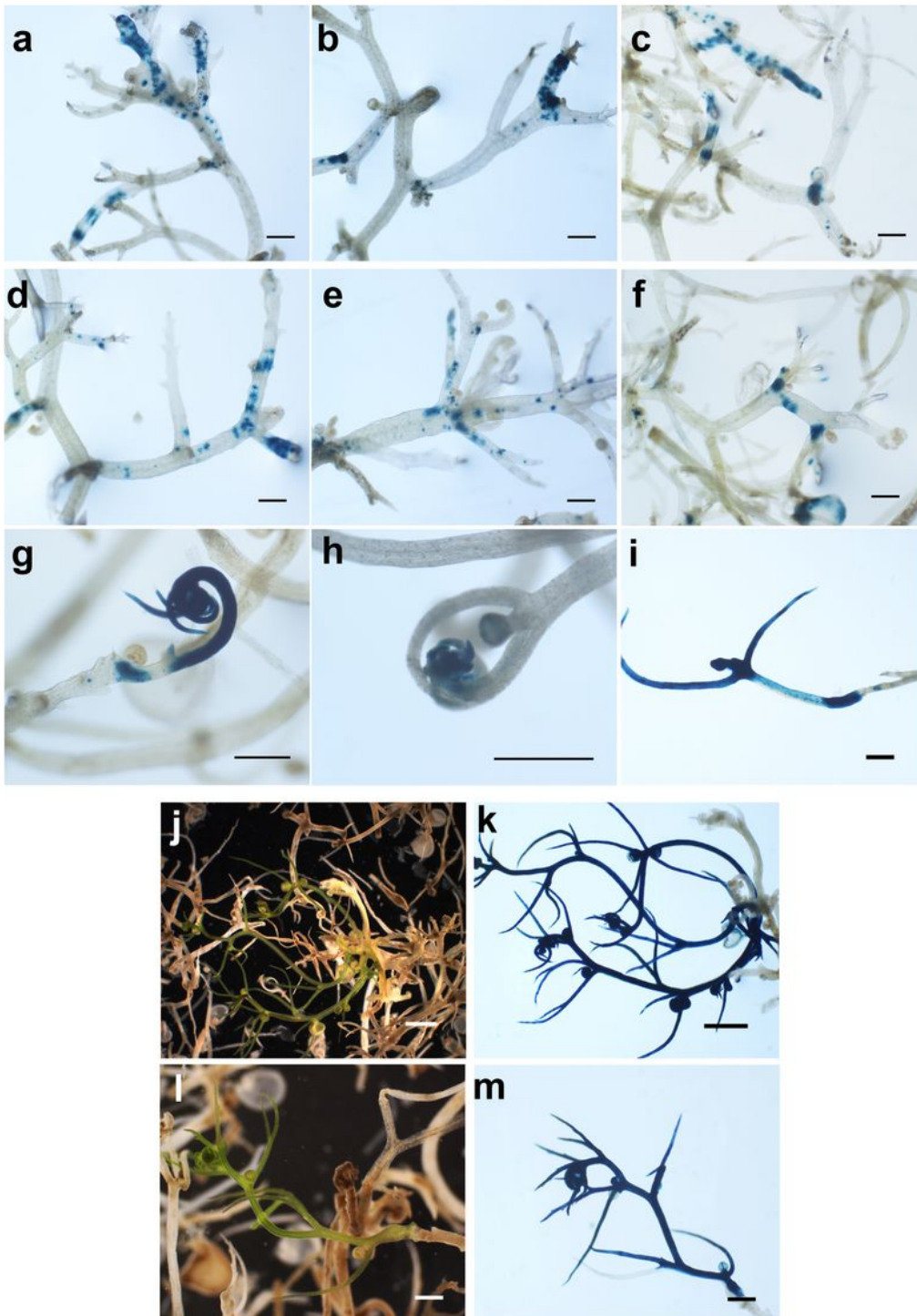


Figure 2

Regeneration and GUS staining kinetics of transformed *U. gibba* plants. a, b and c) Staining pattern of *U. gibba* tissue transformed with a plasmid carrying p35S-GUS::GFP after 7d of co-culture with *Agrobacterium*; d,e, and f) GUS staining of *Utricularia* tissue after 18d of co-culture; g and h) initial transformed buds regenerating after 31d of co-culture; i) emerging transformed shoot after 43d of co-culture; j and l) green shoots growing in selective medium after 45d of co-culture, with dead, whitish

tissue observed around them; k and m) the same shoots stained for GUS activity are shown. Photographs were taken using a SZH10 Olympus microscope. Scale bar for a to i, l and m represents 0.5 mm; scale bar for j and k represents 1 mm.

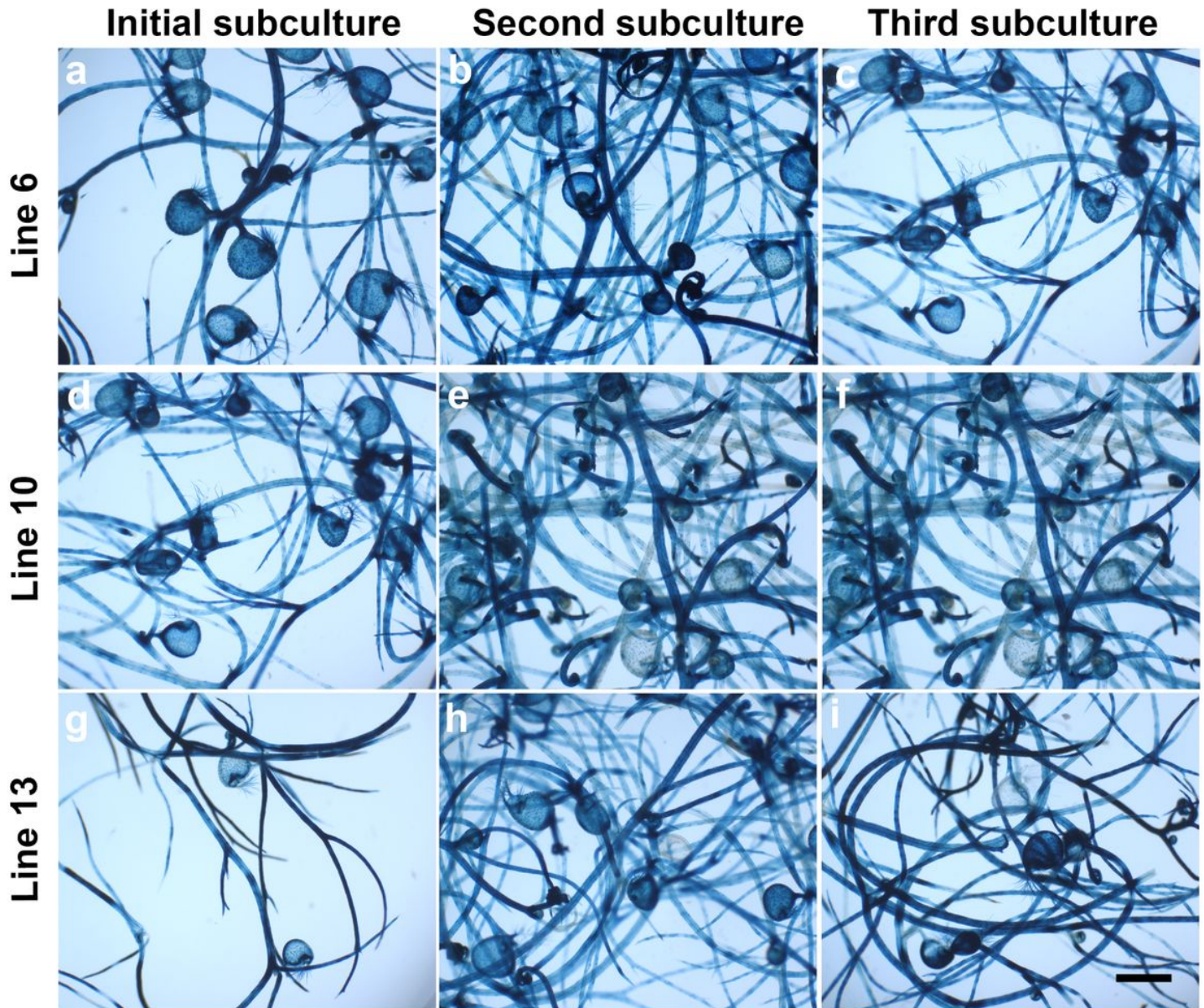


Figure 3

U. gibba independent lines sub-cultured in selective medium and histochemical GUS assays. a, b and c) Transformed p35S-GUS::GFP line 6 showing GUS staining at initial, second and third subculture in selective medium; d,e and f) GUS activity of line 10 at initial, second and third subculture in selective medium; (g,h and i) GUS expression for line 13 at initial, second and third subculture in selective medium. Photographs were taken using a SZH10 Olympus microscope. Scale bar at bottom right=1 mm.

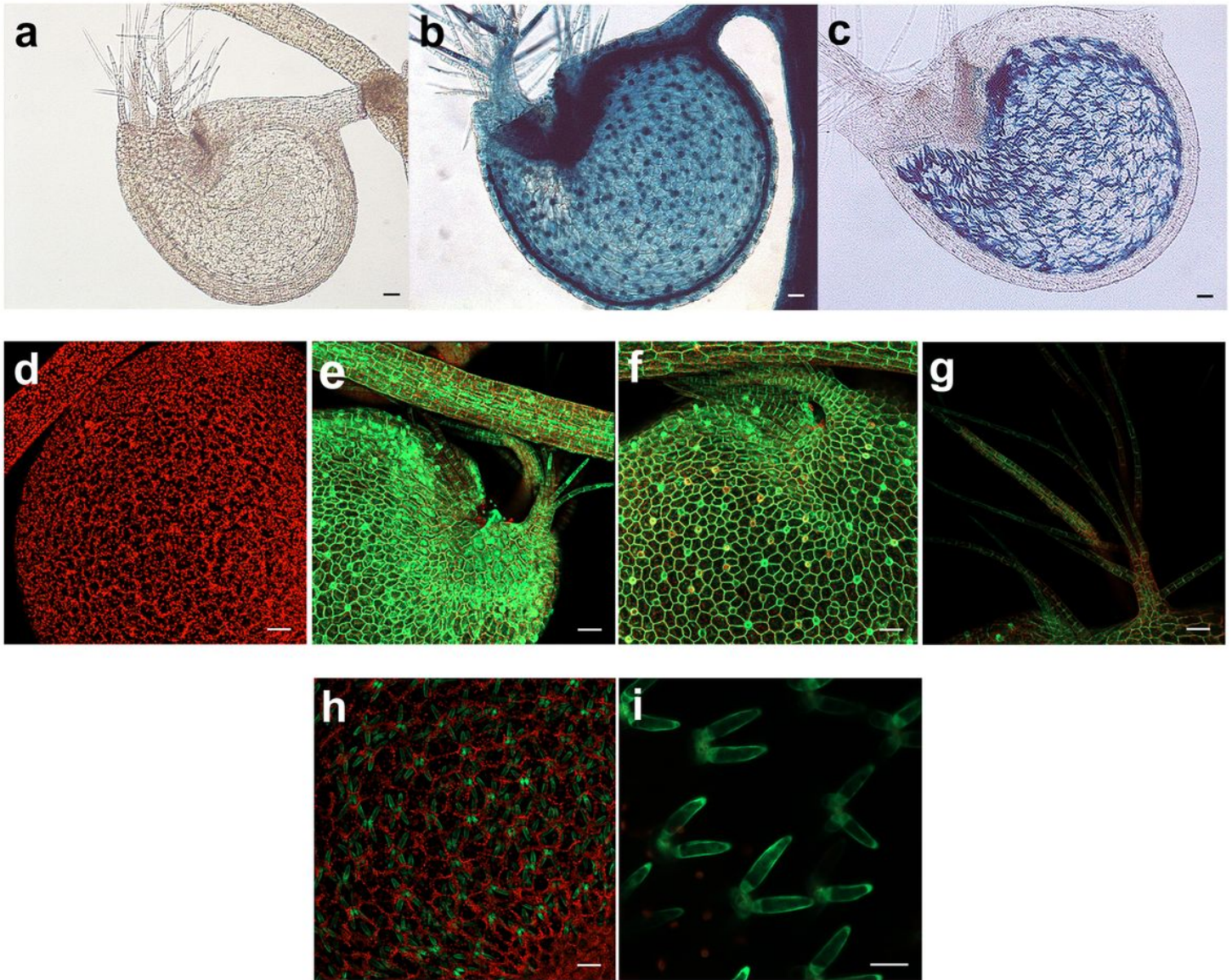


Figure 4

Confocal and Nomarski microscopy of *U. gibba* plants. a) Wild type trap stained overnight for GUS activity; b) transformed p35S-GUS::GFP trap, with GUS expression visible in antennae, trap hairs and the globose trap body itself; c) transformed pRib-GUS::GFP trap, GUS activity is observed in quadrifid cells; d) wild type trap, no GFP fluorescence is observed; e and f) transformed p35S-GUS::GFP *U. gibba* showing fluorescence throughout bladder traps; g) close up of antennae and trap hairs of transformed *U. gibba*; h and i) transformed pRib-GUS::GFP trap, where fluorescence is observed only in quadrifid cells. Confocal photographs were taken using a LSM810 Zeiss Microscope and Nomarski photographs using a Leica DRM microscope. Scale bars in a-h, 50 μm. Bar in i, 20 μm.

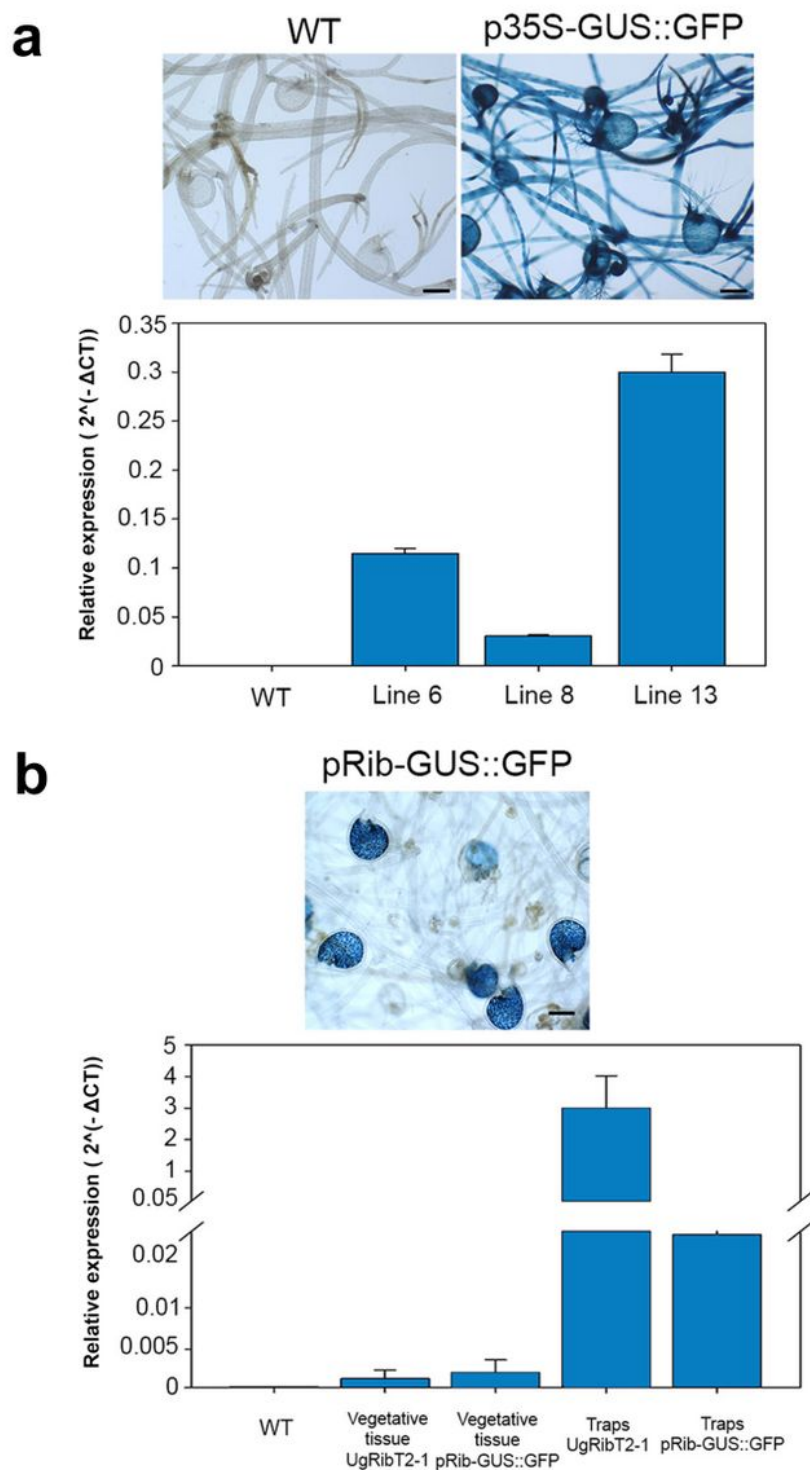


Figure 5

Real Time PCR Analysis of *U. gibba* transgenic lines. a) Photographs taken using a SZH10 Olympus microscope show *Utricularia* wild type and transgenic p35S-GUS::GFP lines stained overnight for GUS activity. Quantitative reverse transcription PCR analysis for GUS expression of three transgenic lines and one wild type plant are shown. Values are reported as a relative quantification between reporter gene and Ubiquitin gene expressed as $2^{(-\Delta CT)}$. Data are the mean of two biological replicates and three technical

replicates for each sample. Standard Error is shown. b) *U. gibba* transgenic plants carrying pRib-GUS::GFP grown for 7 days in media 0.1X MS, subjected to histochemical GUS assays and photographed using a SZH10 Olympus microscope. Quantitative reverse transcription PCR analysis for GUS and native ribonuclease expression of line pRib-GUS::GFP are shown. A wild type plant as control for GUS expression is also shown. For quantitative analysis, tissue was separated into vegetative and trap tissue. Expression levels are reported as relative expression between reporter or endogenous genes and Ubiquitin gene as $2^{(-\Delta CT)}$. Data are the mean of two biological replicates and three technical replicates for each sample. Standard Error is shown. Scale bars, 1mm.

Supplementary Files

This is a list of supplementary files associated with this preprint. Click to download.

- [AdditionalFile1.pdf](#)