

# Toxicity and Risk of Plant-Produced Alkaloids to *Daphnia magna*.

**Megan Griffiths**

University of Copenhagen: Kobenhavns Universitet <https://orcid.org/0000-0002-4218-3672>

**Bjarne Strobel**

University of Copenhagen: Kobenhavns Universitet

**Jawameer Hama**

University of Copenhagen: Kobenhavns Universitet

**Nina Cedergreen** (✉ [ncf@plen.ku.dk](mailto:ncf@plen.ku.dk))

University of Copenhagen: Kobenhavns Universitet <https://orcid.org/0000-0003-4724-9447>

---

## Research

**Keywords:** *Daphnia magna*, alkaloid, plant toxins, risk assessment, aquatic risk assessment

**Posted Date:** November 17th, 2020

**DOI:** <https://doi.org/10.21203/rs.3.rs-105938/v1>

**License:** © ⓘ This work is licensed under a Creative Commons Attribution 4.0 International License.

[Read Full License](#)

---

**Version of Record:** A version of this preprint was published on January 25th, 2021. See the published version at <https://doi.org/10.1186/s12302-020-00452-0>.

# Toxicity and Risk of Plant-Produced Alkaloids to

## *Daphnia magna*.

Megan R. Griffiths<sup>1</sup>, Bjarne W. Strobel<sup>1</sup>, Jawameer R. Hama<sup>1</sup>, Nina Cedergreen<sup>1\*</sup>.

<sup>1</sup> Department of Plant and Environmental Sciences, University of Copenhagen, Thorvaldsensvej 40, 1871 Frederiksberg, Denmark.

Email of corresponding author: [ncf@plen.ku.dk](mailto:ncf@plen.ku.dk)

## Abstract

### Background

Many plants contain phytotoxic alkaloids to deter herbivorous pests and grazing animals. Alkaloids include quinolizidine and indole alkaloids found in the lupin (*Lupinus* spp.), an ornamental flower and emerging protein crop, as well as pyrrolizidine alkaloids in the ragwort (*Senecio jacobaea*), an invasive, weed-like flower. When lupins and ragworts are present in large densities in fields, there is a concern that alkaloids may leach into freshwater environments in amounts that may affect non-target organisms, such as *Daphnia magna*. This study aimed to investigate i) the acute toxicity of alkaloids (gramine, heliotrine, lupanine, lupinine, monocrotaline, monocrotaline N-oxide, senecionine and sparteine) in *D. magna*, ii) the contribution of these individual alkaloids to lupin plant extract toxicity, iii) the longer term reproductive effects of a representative alkaloid, sparteine, and finalise with iv) a tentative risk assessment for the sum of alkaloids measured in soil and surface waters.

### Results

The alkaloids exhibited toxicity, with 48 h EC<sub>50</sub> values in the range of 5.6 to >100 mg/L. The 48 h EC<sub>50</sub> of the *Lupinus angustifolius* plant extract was 1.38 mg/L, which was far more toxic than the simulated extract where lethality was <10% at 10 mg/L after 48 h. Hence, non-measured compounds may have contributed to the joint toxicity. Daphnid mothers exposed to >2.5 mg/L sparteine produced significantly fewer and smaller offspring during the 21-day exposure, making chronic effects occur at concentrations approximately 10-fold lower than the 48 h EC<sub>50</sub> for sparteine. The risk assessment of cumulated alkaloids measured in drain, running and pond waters showed a potential risk, particularly for stagnant pond water, where concentrations were severalfold higher than in the drain and running waters.

### Conclusions

The results highlight that natural toxins may contribute to poor chemical quality of natural waters, and that natural toxins from upcoming crops or invasive weeds should be considered aquatic in risk assessments.

Key words: *Daphnia magna*, alkaloid, plant toxins, risk assessment, aquatic risk assessment

## 1. Background

Many plants contain plant secondary metabolites, some of which can act as attractors of pollinators, defence against bacterial, viral and fungal diseases, and deterrents of herbivores. Of the 200,000 different plant secondary metabolites identified, many are phytotoxins, typically acting as an anti-herbivore defence mechanism (Wink, 2003). Growing evidence suggests that some of these phytotoxins are mobile in soil, leaching from the plant to freshwater sources such as lakes, rivers and groundwater (Rasmussen et al. 2005; Tung et al., 2020). This exposure may pose a risk to aquatic non-target organisms, which are often of similar phylogenetic origin as the plant herbivores.

One of the largest classes of plant secondary metabolites are the alkaloids, comprising at least 21,000 structurally diverse molecules, distributed throughout 20% of known vascular plants (Yang & Stöckigt, 2010). Alkaloids are all united by the presence of a nitrogen-containing heterocyclic ring and can be broadly divided into different classes such as quinolizidine, indole, pyrrolizidine and tropane alkaloids. Quinolizidine alkaloids, e.g. lupanine, lupinine and sparteine, are found predominantly in the *Fabaceae* family, particularly in the genus *Lupinus*. The *Lupinus* genus includes more than 400 characterised lupin species, containing over 100 identified endogenous quinolizidine alkaloids, which can make up to 5% of the plants' dry weight (Wink et al., 1995; Frick et al., 2017). In addition to quinolizidine alkaloids, several lupin species, such as the yellow lupin (*Lupinus luteus*), also contain indole alkaloids e.g. gramine. Lupins are mostly herbaceous perennial plants found in lowland and montane regions (Drummond et al., 2012, Wink et al., 1995; Frick et al., 2017). Like other legumes, lupins are nitrogen fixers (Kurlovich et al., 2002). This, together with their tolerance of low nutrient soils, has facilitated their use as an agricultural tool to enhance soil and reduce disease in subsequent crops by breaking cereal-dominating crop rotations (Kurlovich et al., 2002). Furthermore, the lupins themselves are becoming an attractive protein crop; lupin grain is high in protein (approximately 40%) and low in oil (approximately 10%), with very little starch (Petterson, 2016). This unique composition makes lupins a viable alternative to soya bean used in animal feed and, to a lesser extent, food for humans (Lopez-Bellido & Fuente, 1986; Lucas et al., 2015). As a result, lupin cultivated area and production in Europe has been increasing, from 62,710 hectares in 2000 to 274,394 hectares in 2017 (Lucas et al., 2015, FAOSTAT, 2019).

Another prevalent class of alkaloids are the pyrrolizidine alkaloids, some of which can undergo oxidation to form N-oxides. Both forms are widespread in nature, having been identified in more than 6,000 plant species and being present in approximately 3% of the world's known flowering plants (Culvenor et al., 1981; Fu et al., 2001). Pyrrolizidine alkaloids are found in at least twelve higher plant families, with the *Boraginaceae*, *Asteraceae* (*Compositae*) and *Fabaceae* (*Leguminosae*) families containing the most (Gottschalk et al., 2015). One species of *Asteraceae* known to contain pyrrolizidine alkaloids is *Senecio jacobaea* (syn. *Jacobaea vulgaris*), commonly known as the ragwort. The ragwort

is a common biennial yellow wildflower native to northern Eurasia, and introduced into North America, Argentina, Australia, India, New Zealand and Northern Africa, where it is listed as a noxious weed (Burrill et al., 1994). *S. jacobaea*, along with *S. leucophyllus*, can accumulate large amounts of pyrrolizidine alkaloids; 2.2 and 4.3 mg/kg dry weight, respectively (Macel et al., 2004). As many pyrrolizidine alkaloid-containing plants are invasive and weed-like in nature, they often dominate wild fields and agricultural land (Stegelmeier, 1999).

In conjunction with the anthropogenic and natural increase in lupin and ragwort abundance, respectively, natural stress and pest-induced damage can increase alkaloid concentrations within the plants. As seen in bracken, rain events can lead to leaching of phytotoxins into the surrounding environment (Jessing et al., 2009; Clauson-Kaas et al., 2016). The toxicity of lupin plants and their isolated alkaloids is well-documented in mammals. The mode of action of many quinolizidine and indole alkaloids involves disruption to the cholinergic neurotransmission system, leading to anticholinergic effects such as impaired coordination, memory, sensory faculties, and muscular control (Wink, 2003). Quinolizidine alkaloids act as acetylcholine receptor (AChR) agonists; some preferentially bind to muscarinic AChR (e.g. sparteine) while some preferentially bind to nicotinic AChR (e.g. cytisine and lupanine), with many acting at both (Wink, 2003). Indole alkaloids, such as vincamine, similarly act on the central nervous system, owing to the tryptamine structural moiety found in nearly all indole alkaloids (Sundberg, 1984).

The toxicology of the pyrrolizidine alkaloids is highly dependent on their biotransformation. Hydrolysis and N-oxidation promote detoxification and excretion, hence N-oxide forms are often less toxic than their parent compound. However, oxidation via cytochrome-P450 monooxygenases can produce dehydropyrrolizidine alkaloids, highly reactive electrophilic metabolites that can interact with proteins (Yang et al., 2019). Hepatotoxicity is the most common form of pyrrolizidine alkaloid toxicity, yet they can elicit a variety of toxicities including acute toxicity and genotoxicity such as mutagenicity, carcinogenicity, DNA cross-linking, DNA-protein cross-linking and chromosomal aberrations (Fu et al., 2004).

Considering the known toxic nature of alkaloids, together with their prevalence in plants increasingly used for agricultural purposes, it is critical to assess their potential toxicity to non-target organisms, with the aim of improving risk assessments and better managing land use. Regarding aquatic risk assessment of chemicals, e.g. pesticides (EC Regulation No. 1107/2009), biocides (EC Regulation No. 528/2012) and industrial chemicals (EC Regulation No. 1907/2006), the pelagic crustacean *Daphnia magna* is the preferred first tier organism to test. Hence, the aim of this study was to use *D. magna* to determine 1) whether the toxicity of a lupin extract can be predicted by the toxicity of its known individual alkaloids 2) whether there are differences between acute and chronic toxicity of the quinolizidine alkaloid sparteine, and 3) whether alkaloids measured in the environment may pose a

potential risk to the environment. We hypothesise that toxicity of the natural mixture of alkaloids in the lupin extract can be explained by the concentration addition model, which assumes that the individual chemicals do not interact with each other (Cedergreen et al., 2013). Sparteine was selected to test the difference between acute and chronic toxicity, as it is found in numerous lupin species and may be considered representative due to its structure forming the base of many other quinolizidine alkaloids. Finally, we used the approach of the Water Framework Directive (EC Directive 2000/60/EC) to produce environmental quality standard (EQS) values for alkaloids and applied these to concentrations measured in soil and surface waters Hama & Strobel, 2019; Günthardt et al., 2020; Hama, 2020; Hama & Strobel, 2020b).

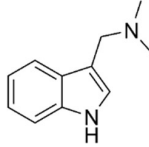
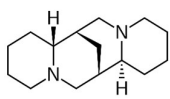
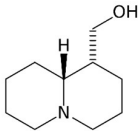
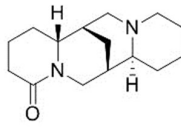
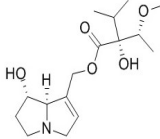
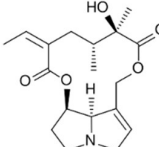
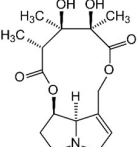
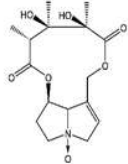
## 2. Methods

### 2.1. Chemicals

The indole alkaloid gramine (CAS; 87-52-5, purity; 99%), and three quinolizidine alkaloids (lupanine (CAS; 550-90-3, purity; 96%), lupinine (CAS; 486-70-4, purity; 96%) and sparteine (CAS; 90-39-1, purity; 99%)) were purchased from Sigma-Aldrich® (Denmark). The pyrrolizidine alkaloids were all purchased from Phytolab (Vestenbergsgreuth, Germany): heliotrine (CAS; 303-33-3, purity; 98%), monocrotaline (CAS; 315-22-0, purity; 95%), monocrotaline N-oxide (CAS; 35337-98-5, purity; 98%) and senecionine (CAS; 130-01-8, purity; 95%). A summary of the alkaloids' relevant physicochemical and environmental fate properties can be found in Table 1. The solvent methanol (CH<sub>3</sub>OH, CAS; 67-56-1, MS grade) and the internal standard caffeine (C<sub>8</sub>H<sub>10</sub>N<sub>4</sub>O<sub>2</sub>, CAS; 58-08-2, purity; 98%) were purchased from Sigma-Aldrich (Germany).

A natural mixture of alkaloids was obtained by producing a crude plant extract from the narrow-leaved lupin (*L. angustifolius*) (Hama & Strobel, 2020a). The plant material (root, stem, leaves, flower, without the seeds) was homogenised and 150 g of this was added to 500 mL ethanol (96%) in a 1 L Erlenmeyer flask and stirred for 30 minutes at room temperature on a magnetic stirrer. The resulting supernatant was collected in another flask and this extraction process was repeated a further two times. The supernatants were pooled and then filtered through a 90 mm Frisenette 118 filter paper. A rotation evaporator was used to remove the ethanol; rotation was set at 4-5 rotations/min and the water bath temperature was set to 40°C. The ethanol-free extract was transferred to a 100 mL Blue Cap flask with 100 mL deionised water and stored at -20°C until needed.

**Table 1** Summary of the properties of the selected alkaloids based on experimental data or QSAR predictions obtained from the Danish QSAR Database (<http://qsar.food.dtu.dk/>). a: PhysProp. b: Dannenfelser & Yalkowsky (1992).

	Gramine	Sparteine	Lupinine	Lupanine	Heliotrine	Senecionine	Monocrotaline	Monocrotaline N-oxide
Type of Alkaloid	Indole	Quinolizidine	Quinolizidine	Quinolizidine	Pyrrolizidine	Pyrrolizidine	Pyrrolizidine	Pyrrolizidine
Structure								
Molecular Formula	C <sub>11</sub> H <sub>14</sub> N <sub>2</sub>	C <sub>15</sub> H <sub>26</sub> N <sub>2</sub>	C <sub>10</sub> H <sub>19</sub> NO	C <sub>15</sub> H <sub>24</sub> N <sub>2</sub> O	C <sub>16</sub> H <sub>27</sub> NO <sub>5</sub>	C <sub>18</sub> H <sub>25</sub> NO <sub>5</sub>	C <sub>16</sub> H <sub>23</sub> NO <sub>6</sub>	C <sub>16</sub> H <sub>23</sub> NO <sub>7</sub>
Molecular Weight (g/mol)	174.25	234.39	169.27	248.37	313.4	335.4	325.36	341.36
Boiling Point (°C)	312.39	325 <sup>a</sup>	270.93	374.71	394.8	503.9	502.87	
Water Solubility (mg/L)	34,400	3,040 at 22°C <sup>b</sup>	2.512e+004 at 25°C	831.5	46,350	165,300	901,900	
pKa	8.7 (Base) n/a (Acid)	12 (Base) n/a (Acid)	9.4 (Base) 15.3 (Acid)	9.4 (Base) n/a (Acid)	9.2 (Base) 14.1 (Acid)	7.8 (Base) 12.4 (Acid)	7.8 (Base) 11.2 (Acid)	
LogKow	1.45	2.73	1.64	1.71	0.41	-0.39	-1.18	
LogKoc (MCI method)	3.2306	3.71	1.727	3.1097	0.5358	1.9616	0.2883	<i>Monocrotaline N-oxide not in QSAR database</i>
LogKoc (Kow method)	1.6618	2.304	1.355	1.7582	0.1074	0.1014	-0.747	
Bioconcentration Factor (L/kg wet-wt)	4.218	29.3	5.609	6.271	3.162	3.162	3.162	
Level III Fugacity Environmental Partitioning t <sub>1/2</sub>								
	<i>Air</i>	2.03 h	3.69 h	3.69 h	0.926 h	0.444 h	0.406 h	0.489 h
	<i>Water</i>	60 d	37.5 d	37.5 d	37.5 d	37.5 d	37.5 d	60 d
	<i>Soil</i>	120 d	75 d	75 d	75 d	75 d	75 d	120 d
	<i>Sediment</i>	541.7 d	337.5 d	337.5 d	337.5 d	337.5 d	337.5 d	541.7 d
Leadscope <i>D. magna</i> 48 h EC <sub>50</sub> (mg/L)	5.046	3.148	13.045	3.476	254,148	3.218	9.735	

## 2.2. *Daphnia magna* culture

*Daphnia magna* (F-clone), originally obtained from Barcelona, were cultured based on the OCED (Organisation for Economic Co-operation and Development) Guidelines for the Testing of Chemicals (OECD, 2004). The *D. magna* culture was kept in 1-L glass beakers containing approximately 0.8 L M7 medium, with  $15 \pm 2$  individuals per beaker, at  $20 \pm 2^\circ\text{C}$  under a 16:8 h light:dark photoperiod, light intensity not exceeding  $15\text{-}20 \mu\text{Em}^{-2}\text{s}^{-1}$  (OECD, 2004). Organisms were fed with either the green microalgae *Raphidocelis subcapitata* or the unicellular green algae *Chlorella* (approximately  $9 \times 10^4$  cells/daphnid), which were cultured based on the OECD guideline 201 for testing of chemicals (OECD, 2011). All neonates used in the following tests came from this stock culture of healthy, parthenogenic mothers.

## 2.3. *Daphnia magna* acute toxicity tests

Acute toxicity tests were performed for the crude plant extract, and technical grade gramine, heliotrine, lupanine, lupinine, monocrotaline, monocrotaline N-oxide, senecionine and sparteine. To determine if any synergistic/additive relationships existed between the quinolizidine alkaloids, an acute toxicity test was also conducted for a simulated mixture replicating the natural composition of alkaloids found in the plant extract. Due to lack of literature values for acute toxicity of these chemicals in *D. magna* or other aquatic invertebrates, concentration ranges used for single toxicity studies were selected based on *D. magna* 48 h  $\text{EC}_{50}$  (concentration causing 50% immobility) estimates produced by quantitative structure-activity relationship (QSAR) models (Leadscope, SciQSAR, Epi ECOSAR).

The acute toxicity tests were conducted in accordance with OECD test 202 (OECD, 2004) and performed in 100 mL glass beakers containing 50 mL solution. In addition to the treatment groups, there were also a control group (media only) for every experiment and, where necessary, a solvent control group testing the highest solvent concentration used. The solvent limit set by the OECD guidelines is 0.01% (OECD, 2004). However, as some of the individual alkaloid stock solutions were dissolved in 100% methanol, and high alkaloid concentrations were tested, solvent concentrations did occasionally exceed 0.01%. In these cases, spiked test beakers were left uncovered for 48 h to let the methanol evaporate. If no differences between control and solvent control mortality were observed, results from both groups were pooled into a singular control group.

For each treatment/control group there were four replicates, with each replicate containing five *D. magna* neonates ( $\leq 48$  h old) from a healthy stock of parthenogenic mothers. The experiment was carried out under the same conditions as the stock culture was kept. Test vessels were loosely covered with film to reduce water loss and contamination with dust or other particles. This was a static test, with no renewal of media at any point. Daphnids were not fed during the first 48 h to avoid sorption of alkaloids



to food particles, but were thereafter fed approximately  $9 \times 10^4$  cells/daphnid *R. subcapitata*. At 24, 48, 72 and 96 h after exposure, the number of mobile/immobile daphnids were recorded; daphnids were classed as immobile when they did not swim within 15 seconds following gentle mechanical stimulation of the media.

#### 2.4. *Daphnia magna* reproductive toxicity test

The experiment, based on OECD test 211 (OECD, 2012), aimed to investigate the sub-lethal effects on the reproductive output of female *D. magna* over 21 days during chronic exposure to sparteine.

Neonates ( $\leq 24$  h) were obtained from 4-week old parents. Each mother ( $N = 10$  replicates per treatment;  $N = 1$  organism per replicate) was individually exposed to 50 mL test solution in a 100 mL glass beaker in a semi-static renewal set-up for 21 d. A solvent control group was included as well as the blank control (media only). The solvent control and highest sparteine concentration group both contained 0.01% (0.1 mL/L) MeOH, which is the maximum solvent limit set by OECD (OECD, 2012).

Survival and reproductive output of each individual was recorded every day, with offspring gently sieved, counted and removed when present. Daphnids were fed approximately  $9 \times 10^4$  cells/daphnid *R. subcapitata* daily and were transferred into clean beakers with new test solutions every third day to ensure sufficient dissolved oxygen and relatively stable sparteine concentrations. Days to production of first brood and cumulative number of neonates per female were used to assess fecundity. Only offspring produced by mothers that survived the duration of the experiment were included in the fecundity data analysis.

Once a week (days 7, 14 and 21) all mothers from each treatment group were transferred onto a plastic sheet, with another sheet gently placed on top, and subsequently scanned using a Canon CanoScan LiDE 220 A4 scanner at 1,200 DPI (dots per inch). Mothers were transferred back into their beakers immediately after scanning. The resulting images were assessed using the MeasuringBodyLength.exe software (Agatz et al., 2015) in order to calculate average length, from the apex of the helmet to the base of the tail spine (Zagatto, 1989), of mothers over time for each exposure concentration. Neonates produced on days 18, 19, 20 and 21 were scanned as above.

#### 2.5. Exposure verification

##### 2.5.1. pH and oxygen

During the acute toxicity tests, pH was measured using a Metrohm® 913 pH meter (Switzerland) at 0, 48, and 96 h as minimum to check the validity of the test according to the OECD performance criteria (OECD, 2004). Dissolved oxygen concentration was measured at 0, 48, and 96 h using a ProfiLine Oxi

3310 portable oxygen meter connected to an FDO<sup>®</sup> 925 oxygen sensor (WTW, Germany) to ensure dissolved oxygen concentration remained above 3 mg/L (OECD, 2004).

In the crude plant extract acute toxicity test, oxygen fell below 1 mg/L in all test solutions within the first 24 h. The experiment was therefore repeated with modifications; replicates were pooled ( $N = 15$  daphnids per bottle) in 250 mL bottles containing 200 mL solution, and continuously aerated using an air pump (Mistral 2000, Aqua Medic GmbH, Germany) via plastic tubing and glass syringe needles. During the reproduction study, pH and dissolved oxygen concentration were measured in each new stock solution and old solutions at time of renewal.

### 2.5.2. Chemical analysis

In order to verify the exposure concentrations, samples were taken at various time points, mixed with 20  $\mu$ L caffeine to a final concentration of 10  $\mu$ g/L as an internal standard and stored in amber HPLC vials at -20°C for subsequent chemical analysis. For the acute toxicity tests, 500-1,000  $\mu$ L samples were taken from each beaker at 0 h before the daphnids were added, and at 48 and 96 h. For the reproduction test, 500-1,000  $\mu$ L samples were taken of each new stock solution at time of renewal every 3 days (days 0, 3, 6, 9, 12, 15 and 18), and of old solutions at time of renewal approximately once per week (days 3, 9, 15 and 21). The chemical analysis was carried out using Ultra Performance Liquid Chromatography (UPLC) coupled with Mass Spectrometry; UPLC-MS/MS. Details are summarized in the supplementary information (Table S1), and more explicitly in Hama & Strobel (2019 and 2020a).

## 2.6. Statistical treatment of data

### 2.6.1 Toxicity data

Survival as a function of time was described by the General Unified Threshold model for Survival (GUTS) using the openGUTS software ([www.openGUTS.info](http://www.openGUTS.info)), using the assumption of Stochastic Death, SD, and Individual Tolerance (IT) (Jager et al., 2011; EFSA, 2018). Concentration causing 50% immobility ( $EC_{50}$ ) values were extracted for the timepoints 48 h (the standard time for acute toxicity test with *D. magna*) and 96 h (the time used in the present study).

In GUTS, the scaled damage,  $D_w$ , is modelled according to Eq. 1, where  $k_D$  is the dominant rate constant and  $C_w$  the external measured alkaloid concentration.

$$\left| \frac{dD_w(t)}{dt} = k_D \times (C_w(t) - D_w(t)) \right. \quad (1)$$

According to SD-theory, hazard to the organism,  $H$ , increases proportionally to the killing rate,  $b_w$ , when the scaled damage exceeds the internal threshold concentration  $z_w$ .

$$\left| \frac{dH(t)}{dt} = b_w \times \max(0, D_w(t) - z_w) \right. \quad (2)$$

Finally, the survival probability,  $S_{SD}$ , as a function of time for an organism with an internal threshold  $z_w$ , is calculated from the hazard,  $H$ , and background hazard,  $h_b$  (control mortality).

$$S_{SD} = e^{-(H(t)+h_b(t))} \quad (3)$$

When modelling survival over time according to theory of individual tolerance, the threshold distribution,  $m_w$ , is assumed to be log-logistic and the survival probability,  $F(t)$ , of an individual is calculated according to cumulative log-logistic distribution of the threshold (eq 10).<sup>18, 31</sup>

$$F(t) = \frac{1}{1 + \left( \frac{\max_{0 \leq \tau \leq t} D_w(\tau)}{m_w} \right)^{-\beta}} \quad (4)$$

where  $m_w$  is the median distribution of the threshold (measured as concentration), while  $\beta$  is a parameter determining the width of the distribution. As survival in the IT model is related to the maximum dose metric rather than the actual dose metric until time  $t$ , the probability to survive ( $S_{IT}$ ) can be described as:

$$S_{IT}(t) = (1 - F(t)) \times e^{-h_b \times t} \quad (5)$$

Parameter sets for the GUTS-RED-SD and GUTS-RED-IT were obtained by minimisation of the negative log-likelihood function, and comparison of the two models was done by comparing log-likelihood values, selecting the model with the lowest value.

For the chronic toxicity study, data is presented as means and standard errors for each treatment or control group. For the time to first brood, cumulative reproduction and mother/neonate length endpoints, a One-way Analysis of Variance (ANOVA) was conducted when the data passed both a Shapiro-Wilk normality test and a Levene's homogeneity of variance test. If these parametric assumptions were not met, non-parametric statistics were conducted; in this case a Kruskal-Wallis one-way ANOVA on ranks. A Tukey HSD post-hoc test was conducted following the one-way ANOVA, or a post-hoc Dunn's test (pairwise multiple comparison) following the Kruskal-Wallis one-way ANOVA on ranks. Significance for all statistical tests was set at 0.05.

### 2.6.2. Risk assessment

To perform a tentative risk assessment of the alkaloids released from plants into the aquatic environment, four available datasets were used: two datasets of soil pore water alkaloid concentrations beneath lupin fields in Switzerland and Denmark, respectively (Hama & Strobel, 2020a, Hama, 2020), and two sets of measured surface water concentrations in three Danish ponds (Hama & Strobel, 2019; Hama & Strobel, 2020a) and one Swiss creek surrounded by grass or meadows with alkaloid-containing plants (Hama, 2020b). Measured or QSAR derived daphnid toxicity data did not exist for all measured

alkaloids, however, all measured and estimated 48 h EC<sub>50</sub> values were within the same order of magnitude. Hence, an average acute toxicity estimate based on measured data was applied to the cumulated alkaloid concentration, and environmental quality standard (EQS) values for cumulated alkaloids were derived following the Water Framework Directive (WFD) guidance document (European Commission, 2011). According to the WFD, an assessment factor of 1000 is applied to acute toxicity data, typically EC<sub>50</sub> values, if only data from a single or few species exists, as is the case for the present study, or an assessment factor of 100 for chronic No Observed Effect Concentration (NOEC) or EC<sub>10</sub> values.

### 3. Results and discussion

#### 3.1. Acute toxicity tests

##### 3.1.1. Individual alkaloids

Initial acute toxicity tests were conducted in *D. magna* for the eight individual alkaloids. Chemical analysis of samples taken at the start of the experiment and after 96 hours showed high stability over time with >95% of the alkaloid measured at the start of the experiment being present after 96 h for the majority of the alkaloids (Table S2). The only exception was monocrotaline, where only 11% of the initial concentration was present after 96 h, possibly due to a conversion to monocrotaline N-oxide. Recovery of the nominal concentration was, however, low. These low recoveries are most likely due to the long time periods (>1 year) between sampling and analytical measurements, the longest of which was for the samples from the chronic study, which had the lowest recovery. Degradation of the alkaloids during storage is therefore likely. Initial nominal concentrations are used for all toxicity estimates due to the 1) stability of the alkaloids during the experimental period, and 2) a recovery study measuring alkaloid concentrations in spiked soils and water using the same method with shorter storage time showed >90% recovery (Hama & Strobel, 2019).

The two reduced GUTS models SD and IT generally described data equally well, with Log-Likelihood values for the estimations varying by less than 10%. As the IT model was most often the best fitting model, describing four of the seven curves that could be fitted better than the SD-model, parameter values for GUTS-RED-IT are given in Table 2 together with the EC<sub>50</sub> values after 48 h and 96 h, and are used in the risk assessment. The GUTS-RED-SD parameters are given in SI together with concentration-response curves after 96 hours of exposure (Table S3, Figure S1). Concentration-response curves were obtained for all alkaloids except for heliotrine, where all daphnids survived at the highest concentration tested of 100 mg/L. For lupinine, only 25% of the organisms died at the highest concentration tested. Hence, these EC<sub>50</sub> values should be interpreted with care. The rest of the alkaloids killed >80% of the organisms at the highest concentrations tested.

**Table 2.** The negative Log-likelihood values (LL), and parameters derived from fitting mobility of daphnids exposed to individual alkaloids and an alkaloid plant extract daily over 96 h to a GUTS-RED-IT model are given together with derived EC<sub>50</sub> values after 48 h (standard timeframe for toxicity on *D. magna*) and 96 h. All values are given with their 95% confidence intervals (CI). NA indicates non-achievable data.

	LL	kD_IT /d	mw_IT mg/L	β	48 h EC <sub>50</sub> mg/L	96 h EC <sub>50</sub> mg/L
Gramine	106.6	0.411 (0.090-0.721)	3.37 (1.13-4.49)	3.07 (2.11-5.70)	6.03 (5.18-7.49)	4.19 (3.41-4.95)
Heliotrine		NA	NA	NA	>100	>100
Lupanine	80	0.0016 (0.0016*-0.173)	0.419 (0.322-33.7)	4.89 (3.02-10.0)	128 (96-185)	64 (48-93)
Lupinine	27.9	0.698 (0.002*-1.46)	117 (0.92-160*)	5.10 (2.36-20*)	156 (95-703)	125 (82-394)
Monocrotaline	37.9	0.421 (0.158-0.776)	22.4 (11.0-32.0)	2.26 (1.74-3.49)	39.4 (32.7-47.1)	27.5 (21.9-34.7)
Monocrotaline N-oxide	3.97	0.613 (0.42-6.11)	44.0 (4.05-96.8)	1.05 (1.05*-2.28)	62.2 (40.1-96.7)	48.1 (25.8-96.7)
Senecionine	26.3	0.969 (0.501-1.64)	45.8 (31.6-62.7)	2.85 (2.03-5.15)	53.6 (41.6-68.9)	46.8 (34.7-63.7)
Sparteine	77.3	0.0016 (0.0016*-0.205)	0.0937 (0.0632-9.77)	5.57 (3.12-20*)	28.6 (18.8-40.9)	14.3 (9.4-20.7)
Plant extract	145	0.0016 (0.0016*-0.137)	0.0056 (0.0043-0.421)	3.91 (2.63-7.01)	1.72 (1.30-2.14)	0.86 (0.65-1.09)

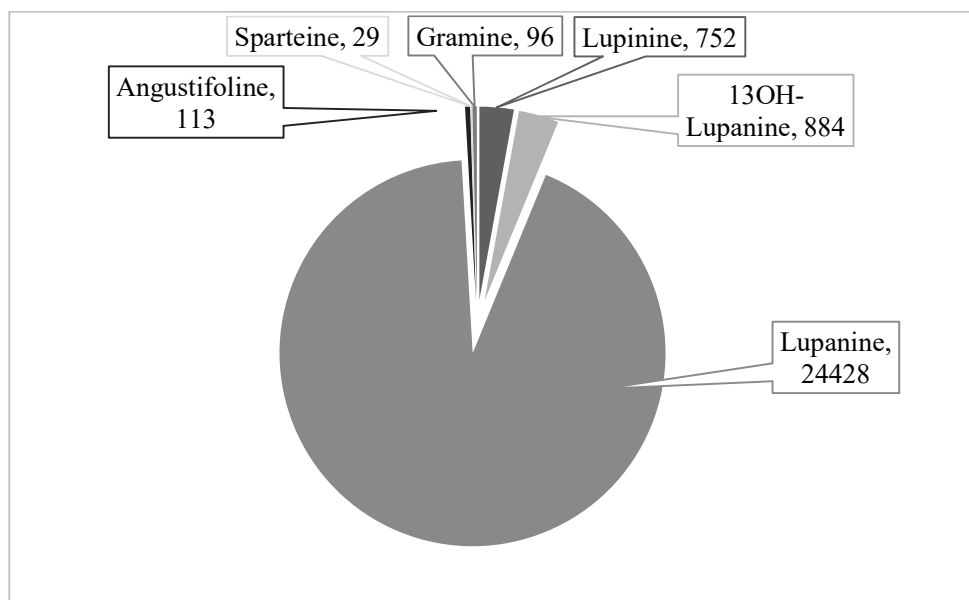
\*edge of 95% parameter CI has run into a boundary

Comparing experimental 48 h and 96 h EC<sub>50</sub> values with 48 h EC<sub>50</sub> QSAR estimates predicted using Leadscope (Leadscope Toxicity Database) (Table 1&2), showed that the measured EC<sub>50</sub> values were <1-35-fold higher than the QSAR estimates for the 48 h measurements, and <1-17-fold higher for the 96 h measurements. Hence, the QSAR provided conservative QSAR estimates by always predicting similar (gramine) or more toxic measurements compared to the measured values. Hence, for risk assessment purposes, it seems the Leadscope QSAR platform estimates alkaloid toxicity towards *D. magna* within the right order of magnitude. The only other experimentally obtained 48 h EC<sub>50</sub> for *D. magna* found in the literature was 12 mg/L lupanine, which is approximately 10-fold lower than the 128 mg/L found in this study (Table 2).

Addressing the difference in toxicity between the tested alkaloids, the indole alkaloid gramine was the most toxic (48 h EC<sub>50</sub>: 6.03 mg/L), the quinolizidine alkaloids heliotrine, lupinine and lupanine the least toxic (48 h EC<sub>50</sub>: >100 mg/L), while the pyrrolizidine alkaloids had toxicities in between (Table 2). In mammals, lupanine and sparteine are consistently the most toxic of the quinolizidine alkaloids when administered to rats, guinea pigs and mice, with oral LD<sub>50</sub> values in mice of 410 mg/kg bodyweight for lupanine and 220 mg/kg body weight for sparteine (Yovo et al., 1984). The LD<sub>50</sub> values for pyrrolizidine alkaloids were within the same range when tested in rats, with LD<sub>50</sub> values of 300, 175 and 85 mg/kg bodyweight for heliotrine, monocrotaline and senecionine, respectively.

### 3.1.2. Mixture of alkaloids

A 96-hour acute toxicity test was also conducted for a crude plant extract derived from *L. angustifolius*, representing natural mixtures of alkaloids seen in this species. As seen in Figure 1, the plant extract consisted primarily of quinolizidine alkaloids (lupanine (92.9%), 13-hydroxylupanine (3.4%), lupinine (2.9%), angustifoline (0.4%) and sparteine (0.1%)), as well as the indole alkaloid gramine (0.4%). The plant extract was five to 100-fold more toxic than any of the individual alkaloids tested, based on measured cumulated alkaloids, having a 96 h ED<sub>50</sub> value of 860 µg/L (Table 2).



**Figure 1.** Concentration of quinolizidine ( $N = 5$ ) and indole ( $N = 1$ ) alkaloids in the crude plant extract of *Lupinus angustifolius*. Values are in µg/L.

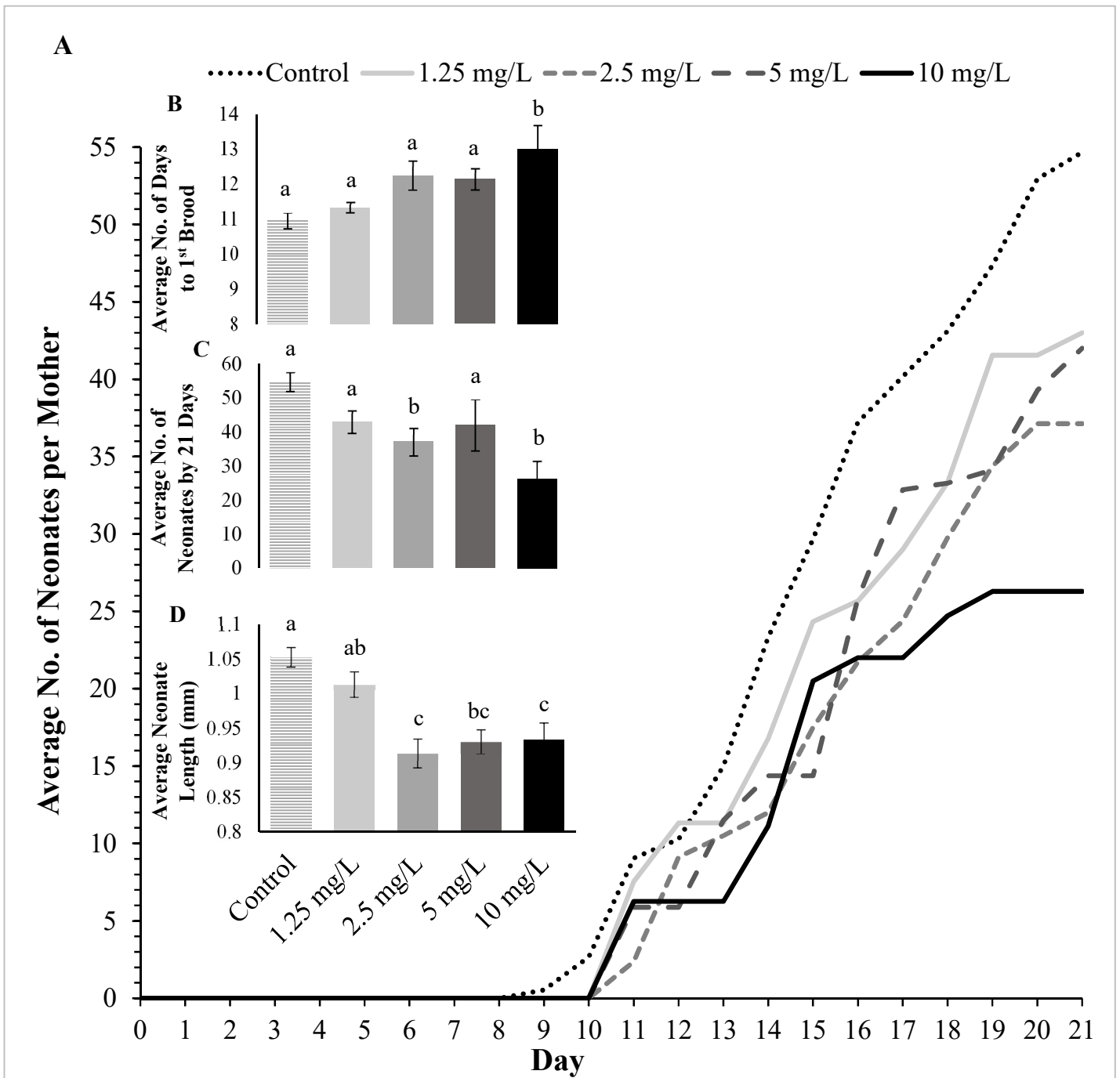
This means that either there are more toxic compounds in the plant extract than those measured, or the measured alkaloids interact synergistically with each other or with other plant extract components. As the concentrations of the individual alkaloids in the plant extract were known (sum of 10 mg/L in the highest concentration), a simulated mixture was tested with similar alkaloid proportions and concentrations. This mixture, however, maximally killed 15% of the daphnids after 96 h, emphasising that the measured alkaloids cannot explain the observed toxicity of the plant extract, which likely stems from other unmeasured phytotoxins. An additional factor could be the turbidity of the plant extract affecting daphnid survival, as the high concentrations were visually green and turbid. Several studies have shown the negative influence of turbidity on daphnid behavioural responses and motility (McCabe & O'Brien, 1983; Chen et al., 2012), hence, this cannot be ruled out as a factor contributing to the observed immobility in the plant extract treatments, despite oxygen and pH kept within the OECD limits (OECD, 2004).

Contrary to our study, rat studies investigating the toxicity of lupin extracts and individual, pure alkaloids, have shown mixtures to be less toxic than predicted by the toxicities of the individual alkaloids. One study exposed rats to lupanine and hydroxylupanine, which were more toxic individually than when mixed (Pettersen, 1987). A similar study dosed rats with lupanine, resulting in an acute oral LD<sub>50</sub> of 1,700 mg/kg body weight, while an alkaloid mixture from *L. angustifolius* (49% lupanine, 39% 13-hydroxylupanine, 10% angustifoline, and 0.7%  $\alpha$ -isolupanine) resulted in an acute oral LD<sub>50</sub> of 2,300 mg/kg body weight (Pilegaard & Gry, 2008).

### 3.2. Effects of sparteine on reproduction

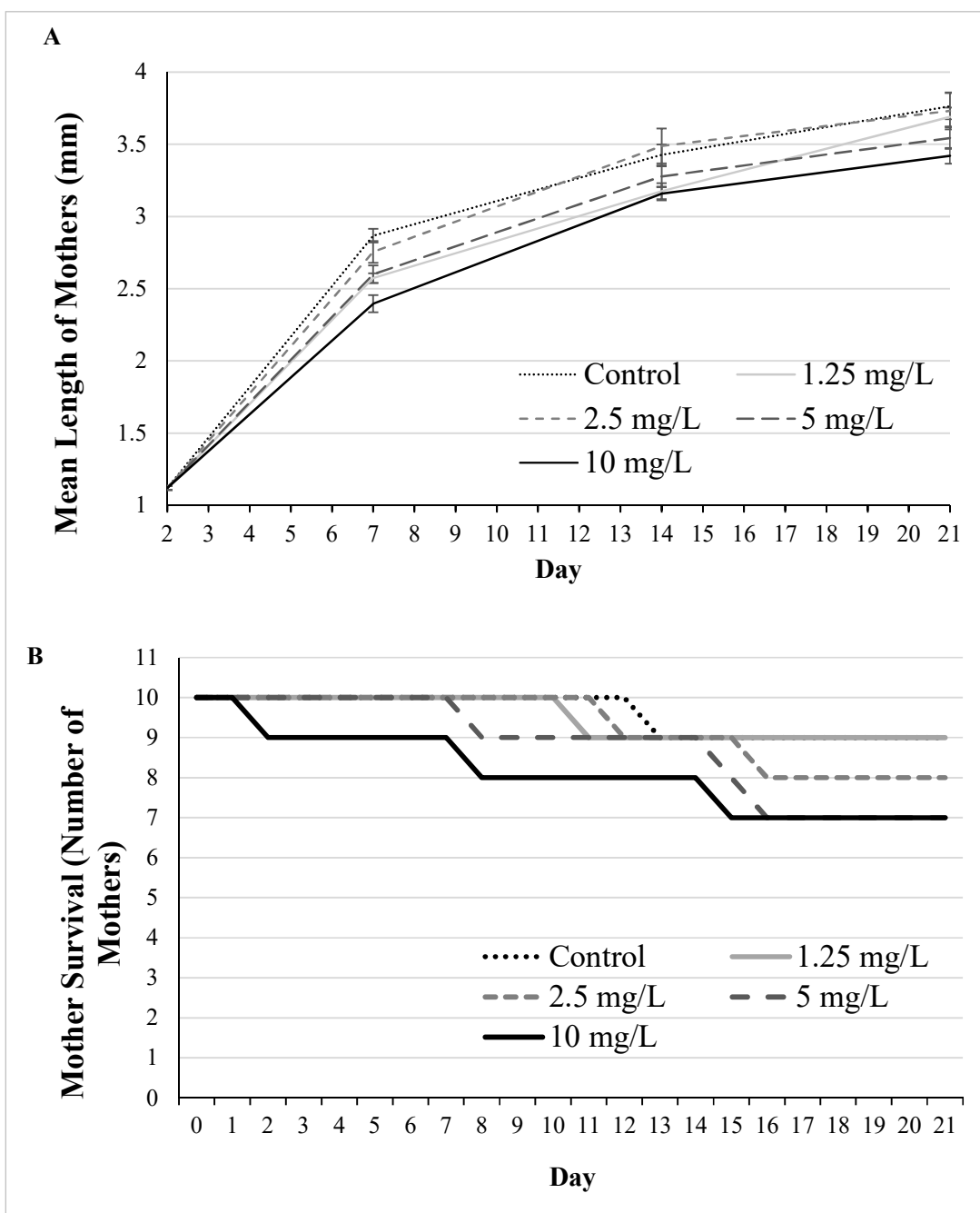
While acute toxicity provides a unified ‘benchmark’ enabling quick comparison between different chemicals on different species, it is arguably less relevant for aquatic organisms exposed to phytotoxins, which are released over a longer period of time during the season and may even accumulate over the season due to their relative persistence (Hama & Strobel, 2020a; Hama & Strobel, 2020b). Therefore a 21-day sublethal exposure was conducted to investigate the reproductive toxicity of sparteine, which is considered a representative quinolizidine alkaloid. Exposure verification of sparteine concentrations at the start and end of each three-day exposure period confirmed the stability of sparteine in the test setup, with concentrations after three days being 97-117% of starting concentrations.

Sparteine concentration corresponding to approximately 10% of the 48 h acute EC<sub>50</sub> (Table 2) significantly affected growth and reproduction of daphnid mothers and their neonates (Figure 3, 4). Time to first reproduction increased, while both the size and average number of neonates produced per mother decreased with increasing sparteine concentration (Figure 3). The mothers grew slower with increasing sparteine concentrations, which was particularly apparent after 7 days (Figure 4a), and there was a slightly higher mortality in the two highest concentrations (3 out of 10 mothers), compared to the low treatments and the control (1 out of 10 mothers) (Figure 4b). All data indicate that the low chronic exposures to sparteine deprive the mother of resources. This could be either by decreasing feeding rate, as alkaloids have been shown to affect the neurotransmission system (Wink, 2003), or by upregulating detoxification pathways, which is an energy demanding process (Schl ppi et al., 2020).



**Figure 3.** a) Cumulative reproduction of each treatment group over the 21-day exposure period. Data is the cumulative mean number of neonates per mother for each treatment on each day; b) Mean number of days to production of first brood,  $\pm$  standard error; c) Mean cumulative number of neonates per mother by 21 days,  $\pm$  standard error; d) Mean length of neonates (mm),  $\pm$  standard error. Small letters signify significant differences between treatments (3b: Kruskal-Wallis one-way ANOVA on ranks followed by an unadjusted Dunn's test; 3c and 3d: one-way ANOVA followed by a Tukey HSD test).





**Figure 4.** a) Mean mother length (mm) of daphnid mothers exposed to different sparteine concentrations,  $\pm$  standard error; b) Mother survival in each treatment group throughout the 21 days.

The delayed growth of mothers at the start of the study was also seen by Gottardi et al. (2017), who exposed *D. magna* to the azole fungicide epoxiconazole and the pyrethroid insecticide  $\alpha$ -cypermethrin for 42 days, both separately (25 mg/L epoxiconazole, or 20 ng/L  $\alpha$ -cypermethrin) and as a mixture. They found that after 21 days there were no significant size differences between the treatments, despite the mothers exposed to  $\alpha$ -cypermethrin or to the mixture being significantly shorter than the controls at

days 3, 7 and 14. As both  $\alpha$ -cypermethrin and sparteine affect neurotransmission, this initial reduction in mother size likely occurs by similar mechanisms, probably by decreased feeding efficiency as a result of decreased filtration rates (Christensen et al., 2005; Gottardi et al., 2017). Gottardi et al. (2017) did measure P450 monooxygenase activity over time in all their treatments, but did not observe any severe upregulation (Gottardi et al., 2017).

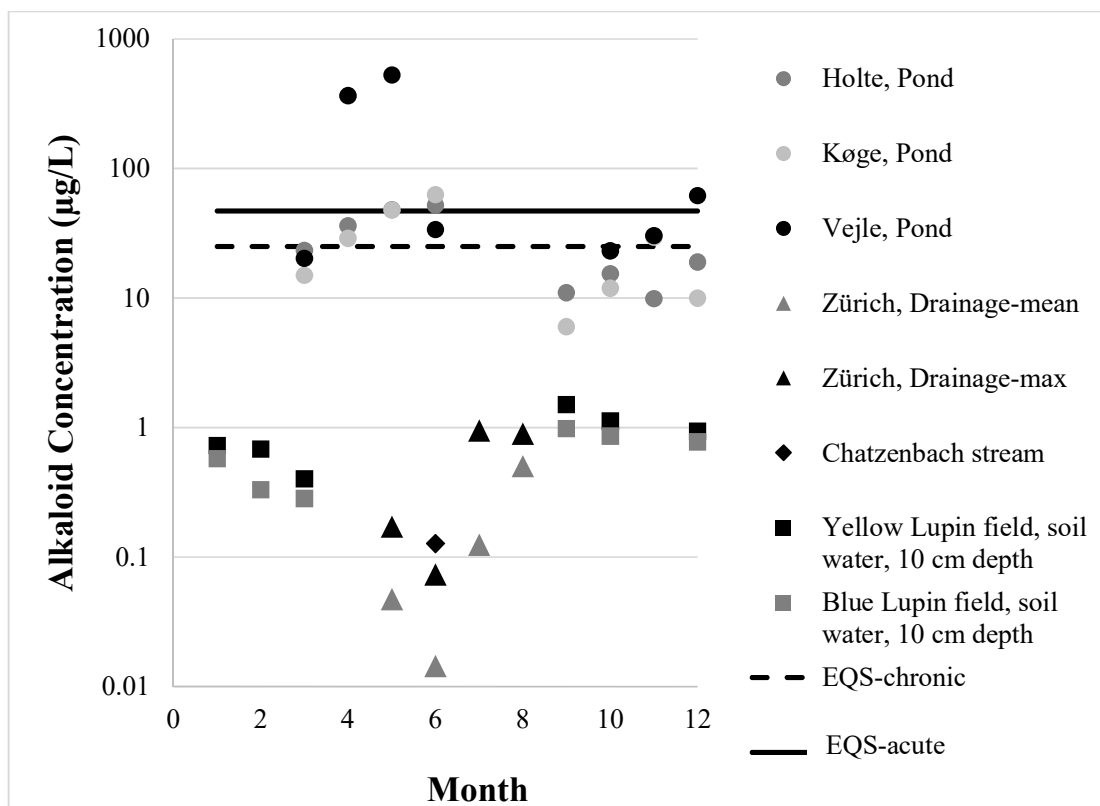
This energetic trade-off may explain the deleterious reproductive effects of sparteine. As neonates were removed daily, i.e. within 24 hours of being released from the mothers, the effects on neonate size are most likely due to the mother's sparteine exposure rather than direct exposure of neonates to sparteine in the media, although this direct short-term exposure cannot be ruled out entirely. Reduced neonate size usually leads to reduced neonate fitness; smaller neonates are e.g. three times more sensitive to acute cadmium exposure than the largest neonates (Enserink et al., 1990). However, the greater concern is the reduced cumulative reproduction and delayed production of first brood seen in the mothers exposed to 10 mg/L sparteine, as this could have population-level effects over multiple generations. Furthermore, any population-level effects of reduced reproductive rate will be exacerbated in the wild, as offspring numbers will further be reduced by predation and disease.

### 3.3. Risk of lupins and other alkaloid-producing plants

Little environmental data for the concentrations of alkaloids in soil or water is currently published, however, we found four studies measuring plant alkaloids in pore, drainage and surface water (Hama & Strobel, 2019; Günthardt et al., 2020; Hama, 2020; Hama & Strobel, 2020b). A total of 26 alkaloids were measured in these studies. Of these 26 alkaloids, we have measured daphnid toxicity values for 7, and have derived QSAR estimates for 13. Eight of the 26 measured alkaloids were N-oxide forms, which are typically less toxic than the non-oxidised form (Wang et al., 2005), as was also seen for the approximately 2-fold higher EC<sub>50</sub>-values of monocrotaline N-oxide compared to monocrotaline (Table 2). QSAR toxicity estimates were not possible for the N-oxide forms, or for certain alkaloids such as angustifoline, erucifoline, jacobine and jacoline.

As measured and estimated toxicity values did not exist for all alkaloids, it was decided to use average toxicity values for the 6 measured non-oxide forms or the 13 estimated non-oxide forms to derive an environmental quality standard (EQS) value. They were 69±60, 47±44 and 6.28±4.15 mg/L for 48 h and 96 h measured EC<sub>50</sub> and 48 h QSAR estimated EC<sub>50</sub>, respectively. The 96 h measured average EC<sub>50</sub> value was used to set the EQS as it was closer to the estimated average including twice as many alkaloids, resulting in an acute EQS of 47 µg/L, when applying an assessment factor of 1000 (European Commission, WFD). We do, however, also have a NOEC from the chronic study of 2.5 mg/L sparteine. Sparteine had a 48 h and 96 h acute EC<sub>50</sub> of 28.6 and 14.3 mg/L, respectively, being in the low end of

the average acute toxicity, hence it could be a reasonable conservative surrogate for the other alkaloids. Using an assessment factor of 100 applied to the NOEC, the chronic EQS is 25  $\mu\text{g/L}$ . The cumulated alkaloid concentrations from the four different studies as a function of the month they were measured are shown in Figure 5, together with the two EQS values. The graph shows that both acute and chronic EQS values are exceeded in ponds for part of the year, whereas measured soil, drainage and stream water concentrations are at least an order of magnitude below the EQS. The high pond concentrations could be due to the alkaloids accumulating in stagnant water, as they exhibit relatively high stability; pyrrolizidine alkaloids have degradation half-lives of 21 days in room temperature water and 43 days in 5°C water (Hama, 2020). Hence, stagnant waters surrounded by alkaloid-producing plants may be affected by this group of secondary metabolites.



**Figure 5.** Measured alkaloid concentrations in soil-, drain- and surface waters monitored in Denmark and Switzerland at different times during the year from January (month 1) to December (month 12) (Hama & Strobel, 2020b, Hama, 2020). The acute and chronic EQS values for the summed alkaloid concentrations are given by a full and broken line, respectively.

Few studies on the risk of plant-produced alkaloids and other plant secondary metabolites exist, and for most the naturally occurring concentrations are often estimates (Jessing et al., 2009; Ovesen et al., 2011; Jiang et al, 2018). Common to the saponin fraction, the cyclotides, and the plant-derived pharmaceutical artemisinin is that they are relatively stable under environmental conditions, with half-lives of days (Jiang et al., 2018; Jessing et al., 2009; Ovesen et al., 2011). Combined with their continuous release

during the season, it therefore seems that at least under some conditions, they may accumulate to toxic levels. A recent study by Tung et al. (2020) researched the extremely potent group of plant secondary metabolites, aristolochic acids, which are suspected to be the cause of millions of kidney diseases and cancer cases worldwide (Katsnelson, 2020), and are persistent with no measured degradation in water over 2 months. Tung et al. (2020) found these aristolochic acids leach to groundwater sources and are therefore also likely to be found in surface waters too. Their environmental risk has not been estimated, but their human toxicity indicate that aquatic fauna could be harmed.

#### 4. Conclusions

The present study highlights that alkaloids produced by common crops and weedy wild flora can pose a risk to the environment. However, as with any chemical, these potential risks must be weighed against benefits when it comes to decisions on regulation. The high protein, high fibre and low oil levels found in lupins, for example, makes them ideal for human and livestock consumption. Currently, most lupin production is targeted towards the feed industry, however, there is growing interest in lupins in human food products, corresponding to increasing evidence of dietary benefits (Sweetingham & Kingwell, 2008). More knowledge on the occurrence and toxicity of natural toxins would nonetheless be beneficial when the overall risk and benefits of land management practises has to be assessed.

#### 5. List of abbreviations

AChR: acetylcholine receptor; ANOVA: Analysis of Variance; CI: Confidence Intervals; DPI: dots per inch; EC<sub>50</sub>: concentration causing 50% immobility; EQS: Environmental Quality Standard; GUTS: General Unified Threshold model for Survival; LD<sub>50</sub>: concentration causing 50% lethality; LL: log likelihood; NOEC: No Observed Effect Concentration; OECD: Organisation for Economic Co-operation and Development; QSAR: Quantitative Structure-Activity Relationship; UPLC-MS/MS: Ultra Performance Liquid Chromatography coupled with Mass Spectrometry; WFD: Water Framework Directive.

#### 6. Declarations

##### 6.1. Ethics approval and consent to participate

Not applicable.

##### 6.2. Consent for publication

Not applicable.

##### 6.3. Availability of data and materials

The datasets used and/or analysed during the current study are available from the corresponding author on request.

#### 6.4. Competing interests

The authors declare that they have no competing interests.

#### 6.5. Funding

This project has received funding from the European Union's Horizon 2020 research and innovation programme under the Marie Skłodowska-Curie grant agreement No. 722493 (NaToxAq).

#### 6.6. Authors' contributions

MRG planned and conducted all toxicity tests in collaboration with NC. MRG did the data treatment and wrote the first draft of the manuscript. NC supervised MG in the process, did the risk assessment analysis and assisted in writing the manuscript. JRH conducted the chemical analyses under the supervision of BWS. All authors read and approved the final manuscript.

#### 6.7. Acknowledgements

The authors wish to thank Birgitte B. Rasmussen and Anja Weibel for their technical assistance.

#### 6.8. Authors' information

Megan Griffiths ORCID-D: 0000-0002-4218-3672

Jawameer Hama ORCID-ID: 0000-0002-0663-4093

Nina Cedergreen ORCID-ID: 0000-0003-4724-9447

## References

- Agatz A, Hammers-Wirtz M, Gergs A, Mayer T, Preuss TG (2015) Family-portraits for daphnids: scanning living individuals and populations to measure body length. *Ecotoxicology*. 24:1385-1394. doi:10.1007/s10646-015-1490-0.
- Blaschek W, Ebel S, Hilgenfeldt U, Holzgrabe U, Reichling J, Schulz V, Barthlott W, Höltje H-D (2016). *Hagers Enzyklopädie der Arzneistoffe und Drogen*.
- Burrill C, Callihan L, Park R, Coombs E, Radtke H (1994). *Tansy ragwort *Senecio jacobaea* L.* Pacific Northwest Cooperative Extension Publication Pullman, Washington, USA; Washington State University Cooperative Extension. 175:1-8.
- Camacho-Muñoz D, Martín J, Santos JL, Aparicio I, Alonso E (2010) Occurrence, temporal evolution and risk assessment of pharmaceutically active compounds in Doñana Park (Spain). *J. Hazard. Mater.* 183:602-608. doi:10.1016/j.jhazmat.2010.07.067.

- Carey DB, Wink M (1994) Elevational variation of quinolizidine alkaloid contents in a lupine (*Lupinus argenteus*) of the Rocky Mountains. *Journal of Chemical Ecology* 20:849-857. doi:10.1007/BF02059582.
- Cedergreen N, Svendsen C, Backhaus T (2013) Chemical mixtures: concepts for predicting toxicity. In *Encyclopedia of Environmental Management*. Taylor and Francis: New York. 2601-2610.
- Chen L, Fu X, Zhang G, Zeng Y, Ren Z (2012) Influences of temperature, pH and turbidity on the behavioural responses of *Daphnia magna* and Japanese medaka (*Oryzias latipes*) in the biomonitor. *Procedia Environmental Sciences* 13:80-86. doi:10.1016/j.proenv.2012.01.007.
- Christensen BT, Lauridsen TL, Ravn HW, Bayley M (2005) A comparison of feeding efficiency and swimming ability of *Daphnia magna* exposed to cypermethrin. *Aquatic Toxicology* 73:210-220. doi:10.1016/j.aquatox.2005.03.011.
- Clauson-Kaas F, Ramwell C, Hansen HC, Strobel BW (2016) Ptaquiloside from bracken in stream water at base flow during storm events. *Water Res* 106:155-162. doi:10.1016/j.watres.2016.09.049.
- Culvenor C, Edgar JA, Smith LW (1981) Pyrrolizidine alkaloids in honey from *Echium plantagineum* L. *J. Agric. Food. Chem.* 29:958-960. doi:10.1021/jf00107a018.
- Dannenfelser RM, Yalkowsky SH (1992). Data base of aqueous solubility for organic non-electrolytes. *Science of the Total Environment* 109-110(C):625-628. doi:10.1016/0048-9697(91)90214-Y.
- Drummond CS, Eastwood RJ, Miotto STS, Hughes CE (2012) Multiple continental radiations and correlates of diversification in *Lupinus* (Leguminosae): testing for key innovation with incomplete taxon sampling. *Systematic Biology* 61:443-460. doi:10.1093/sysbio/syr126.
- Ebert D (2005) *Ecology, Epidemiology, and Evolution of Parasitism in Daphnia* [Internet], 1st ed.; Bethesda (MD): National Library of Medicine (US), National Center for Biotechnology Information: Basel.
- EC Directive 2000/60/EC of the European Parliament and of the Council of 23 October 2000 establishing a framework for Community action in the field of water policy.
- EC Regulation No 1107/2009 of the European Parliament and of the Council of 21 October 2009 concerning the placing of plant protection products on the market and repealing Council Directives 79/117/EEC and 91/414/EEC.
- EC Regulation No 1907/2006 of the European Parliament and of the Council of 18 December 2006 concerning the Registration, Evaluation, Authorisation and Restriction of Chemicals (REACH).
- EC Regulation No 528/2012 of the European Parliament and of the Council of 22 May 2012 concerning the making available on the market and use of biocidal products.
- EFSA (2018) Scientific opinion on the state of the art of Toxicokinetic/Toxicodynamic (TKTD) effect models for regulatory risk assessment of pesticides for aquatic organisms. *EFSA J.* 16. doi:10.2903/j.efsa.2018.5377.
- Enserink L, Luttmmer W, Maas-Diepeveen H (1990) Reproductive strategy of *Daphnia magna* affects the sensitivity of its progeny in acute tests. *Aquatic Toxicology* 17:15-25. doi:10.1016/0166-445X(90)90009-E.

- European Commission (2011) Common implementation strategy for the water framework directive (2000/60/EC). Guidance document no. 27: technical guidance for deriving environmental quality standards. doi:10.2779/43816.
- FAOSTAT (2019) Food and agriculture organization of the united nations - crop statistics on lupin production. <http://www.fao.org/faostat/en/-data/QC>.
- Frick KM, Kamphuis LG, Siddique KH, Singh KB, Foley RC (2017) Quinolizidine alkaloid biosynthesis in lupins and prospects for grain quality improvement. *Frontier Plant Science* 8:1-12. doi:10.3389/fpls.2017.00087.
- Fu PP, Chou MW, Xia Q, Yang YC, Yan J, Doerge DR, Chan PC (2001) Genotoxic pyrrolizidine alkaloids and pyrrolizidine alkaloid *N*-oxides-mechanisms leading to DNA adduct formation and tumorigenicity. *Environ Carcinogen Ecotoxicol Rev* 19:353-386. doi:10.1081/GNC-100107580.
- Fu PP, Xia Q, Lin G, Chou MW (2004) Pyrrolizidine alkaloids--genotoxicity, metabolism enzymes, metabolic activation, and mechanisms. *Drug Metab Rev* 36:1-55. doi:10.1081/dmr-120028426.
- Fu PP, Yang YC, Xia Q, Chou MW, Cui YY, Lin G (2002) Pyrrolizidine alkaloids -tumorigenic components in Chinese herbal medicines and dietary supplements. *J. Food Drug Anal* 10:198-211. doi:10.38212/2224-6614.2743.
- Gottardi M, Birch MR, Dalhoff K, Cedergreen N (2017) The effects of epoxiconazole and  $\alpha$ -cypermethrin on *Daphnia magna* growth, reproduction, and offspring size. *Environmental Toxicology* 36:2155-2166. doi:10.1002/etc.3752.
- Gottschalk C, Ronczka S, Preiss-Weigert A, Ostertag J, Klaffke H, Schafft H, Lahrssen-Wiederholt M (2015) Pyrrolizidine alkaloids in natural and experimental grass silages and implications for feed safety. *Animal Feed Science and Technology* 207:253-261. doi:10.1016/j.anifeedsci.2015.06.014.
- Gremigni P, Wong MTF, Edwards NK, Harris D, Hamblin J (2001). Potassium nutrition effects on seed alkaloid concentrations, yield and mineral content of lupins (*Lupinus angustifolius*). *Plant and Soil* 234:131-142. doi:10.1023/A:1010576702139.
- Günthardt BF, Schonsee CD, Hollender J, Hungerbühler K, Scheringer M, Bucheli TD (2020) "Is there anybody else out there?" - first insights from a suspect screening for phytotoxins in surface Water. *Chimia* 74:129-135. doi:10.2533/chimia.2020.129.
- Hama JR, Strobel BW (2019) Pyrrolizidine alkaloids quantified in soil and water using UPLC-MS/MS. *RSC advances* 9:30350-30357. doi:10.1039/c9ra05301h.
- Hama JR, Strobel BW (2020a) Natural alkaloids from narrow-leaf and yellow lupins transfer to soil and soil solution in agricultural fields. *Environ Sci Eur* 32:1-12. doi:10.1186/s12302-020-00405-7.
- Hama JR, Strobel, BW (2020b) Occurrence of pyrrolizidine alkaloids in ragwort plants, soils and surface waters at the field scale in grassland. *Science of The Total Environment*. *In press*. doi:10.1016/j.scitotenv.2020.142822.
- Hama JR (2020) Fate and analysis of natural alkaloids from plants in soil and surface water. Doctoral dissertation. Department of Plant and Environmental Sciences, University of Copenhagen.
- Hondelmann W (1984) The lupin- ancient and modern crop plant. *Theor Appl Genet* 68:1-9. doi:10.1007/BF00252301.

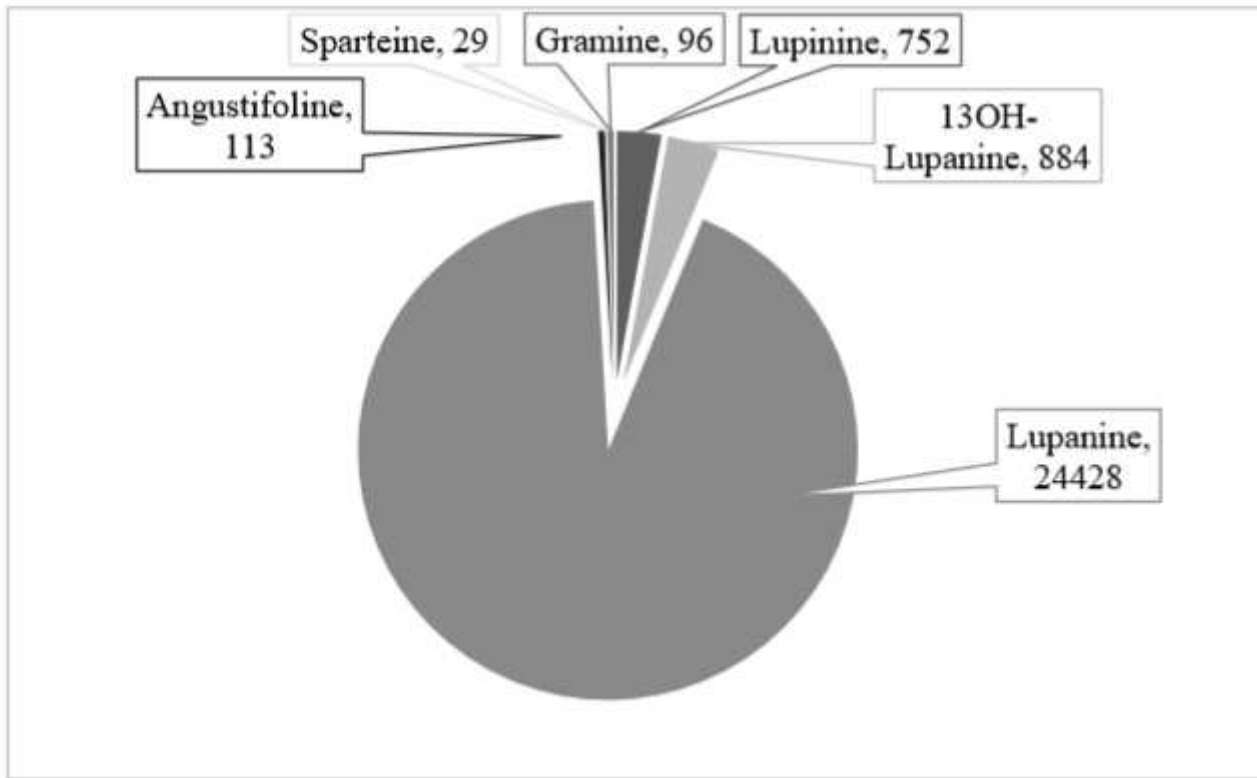
- Jager T, Albert C, Preuss T, Ashauer R (2011) General unified threshold model of survival - a toxicokinetic-toxicodynamic framework for ecotoxicology. *Environmental Science & Technology* 45:2529-2540. doi:10.1021/es103092a.
- Jansen G, Jürgens H-U, Schliephake E, Ordon F (2012) Effect of the soil pH on the alkaloid content of *Lupinus angustifolius*. *Int. J. Agron.* 5:1-5. doi:10.1155/2012/269878.
- Jansen G, Jürgens H-U, Schliephake E, Seddig S, Ordon F (2015) Effects of growing system and season on the alkaloid content and yield of different sweet *L. angustifolius* genotypes. *J. Appl. Bot. Food Qual.* 88:1-4. doi:10.5073/JABFQ.2015.088.001.
- Jessing KK, Cedergreen N, Jensen J, Hansen HCB (2009) Degradation and ecotoxicity of the biomedical drug artemisinin in soil. *Environmental Toxicology and Chemistry* 28:701-710. doi:10.1897/08-153R.1.
- Jiang X, Hansen HCB, Strobel BW, Cedergreen N (2018) What is the aquatic toxicity of saponin-rich plant extracts used as biopesticides? *Environmental Pollution* 236:416-424. doi:10.1016/j.envpol.2018.01.058.
- Katsnelson A (2020) Cracking the case of a mysterious plant toxin. *ACS Central Science* 6:1031-1033. doi:10.1021/acscentsci.0c00869.
- Kurlovich BS (2002) Lupins, geography, classification, genetic resources breeding. Department of Leguminous Crops of N.I. Vavilov Institute of Plant Industry, Publishing house "Intan", St.Petersburg, 2002, 468p. ISBN 5-86741-034- X.
- Lopez-Bellido L, Fuente M (1986) Lupin crop as an alternative source of protein. *Advances in agronomy* 40:239-295. doi:10.1016/S0065-2113(08)60284-9.
- Lucas MM, Stoddard F, Annicchiarico P, Frias J, Martinez-Villaluenga C, Sussmann D, Duranti M, Seger A, Zander P, Pueyo J (2015) The future of lupin as a protein crop in Europe. *Frontiers in Plant Science* 6:705. doi:10.3389/fpls.2015.00705.
- Macel M, Vrieling K, Klinkhamer PGL (2004) Variation in pyrrolizidine alkaloid patterns of *Senecio jacobaea*. *Phytochemistry* 65:865-873. doi:10.1016/j.phytochem.2004.02.009.
- Maknickiene Z, Asakaviciute R (2008) Alkaloid content variations in lupin (*Lupinus L.*) genotypes and vegetation periods. *Biol* 54:112-115. doi:10.2478/v10054-008-0023-7.
- McCabe GD, O'Brien JW (1983) The effects of suspended silt on feeding and reproduction of *Daphnia pulex*. *The American Midland Naturalist* 110:324-337. doi:10.2307/2425273.
- OECD. (2004) Test No. 202: *Daphnia* sp. Acute Immobilisation Test. OECD Guidelines for the Testing of Chemicals, OECD Publishing, Paris.
- OECD. (2011) Test No. 201: Freshwater Alga and Cyanobacteria, Growth Inhibition Test. OECD Guidelines for the Testing of Chemicals, OECD Publishing, Paris.
- OECD. (2012) Test No. 211: *Daphnia magna* Reproduction Test. OECD Guidelines for the Testing of Chemicals, OECD Publishing, Paris.
- Ovesen RG, Brandtz KK, Göransson U, Nielsen J, Hansen HCB, Cedergreen N (2011) Biomedicine in the environment: cyclotides constitute potent natural toxins in plants and soil bacteria. *Environmental Toxicology and Chemistry* 30:1190-1996. doi: 10.1002/etc.496.



- Parmaki S, Vyrides I, Vasquez MI et al. (2018) Bioconversion of alkaloids to high-value chemicals: Comparative analysis of newly isolated lupanine degrading strains. *Chemosphere* 193:50-59. doi: 10.1016/j.chemosphere.2017.10.165.
- Petterson DS (2016) Lupin: overview. *Encyclopaedia of Food Grains*. 2<sup>nd</sup> Edition: Elsevier Amsterdam Ltd.
- Petterson DS, Ellis ZL, Harris DJ, Spadek ZE (1987) Acute toxicity of the major alkaloids of cultivated *Lupinus angustifolius* seed to rats. *Journal of Applied Toxicology* 7:51-53. doi:10.1002/jat.2550070109.
- Pilegaard K, Gry J (2008) Alkaloids in edible lupin seeds: A toxicological review and recommendations. *TemaNord* 605:1-71.
- Prakash AS, Pereira TN, Reilly PE, Seawright AA (1999) Pyrrolizidine alkaloids in human diet. *Mutat. Res.* 443:53-67. doi:10.1016/s1383-5742(99)00010-1.
- Rasmussen LH, Hansen HCB, Lauren D (2005) Sorption, degradation and mobility of ptaquiloside, a carcinogenic Bracken (*Pteridium* sp.) constituent, in the soil environment. *Chemosphere* 58:823-835. doi:10.1016/j.chemosphere.2004.08.088.
- Ritz C, Baty F, Streibig JC, Gerhard D (2016) Dose-response analysis using R. *PLOS ONE* 10:e0146021. doi:10.1371/journal.pone.0146021.
- Schläger S, Dräger B (2016) Exploiting plant alkaloids. *Current Opinions in Biotechnology* 37:155-164. doi:10.1016/j.copbio.2015.12.003.
- Schläppi D, Kettler N, Straub L, Glauser G, Neumann P (2020) Long-term effects of neonicotinoid insecticides on ants. *Communication Biology* 3:1-9. doi:10.1038/s42003-020-1066-2.
- Stegelmeier BL, Edgar JA, Colegate SM, Gardner DR, Schoch TK (1999) Pyrrolizidine alkaloid plants, metabolism and toxicity. *J. Nat. Toxins.* 8:95-116.
- Sundberg RJ (1984) 3.06 - Pyrroles and their benzo derivatives: (iii) synthesis and applications. *Comprehensive Heterocyclic Chemistry* 4:313-376.
- Sweetingham, M. & Kingwell, R. (2008). Lupins – reflections and future possibilities. In *Proceedings of the 12th International Lupin Conference*; Fremantle, Western Australia. 514-524.
- Tung K-K, Chan C-K, Zhao Y, Kwan JC, Liu G, Pavlović NM, Chan W (2020) Occurrence and environmental stability of aristolochic acids in groundwater collected from Serbia: links to human exposure and Balkan endemic nephropathy. *Environ. Sci. Technol.* 54:1554-1561. doi:10.1021/acs.est.9b05337.
- Wang YP, Yan J, Fu PP, Chou MW (2005) Human liver microsomal reduction of pyrrolizidine alkaloid N-oxides to form the corresponding carcinogenic parent alkaloid. *Toxicol Lett* 155:411-420. doi:10.1016/j.toxlet.2004.11.010.
- Wink M (1983). Wounding-induced increase of quinolizidine alkaloid accumulation in lupin leaves. *Zeitung für Naturforschung C* 38:905-909. doi:10.1515/znc-1983-11-1204.
- Wink M (2003) Evolution of secondary metabolites from an ecological and molecular phylogenetic perspective. *Phytochemistry* 64:3-19. doi:10.1016/S0031-9422(03)00300-5.

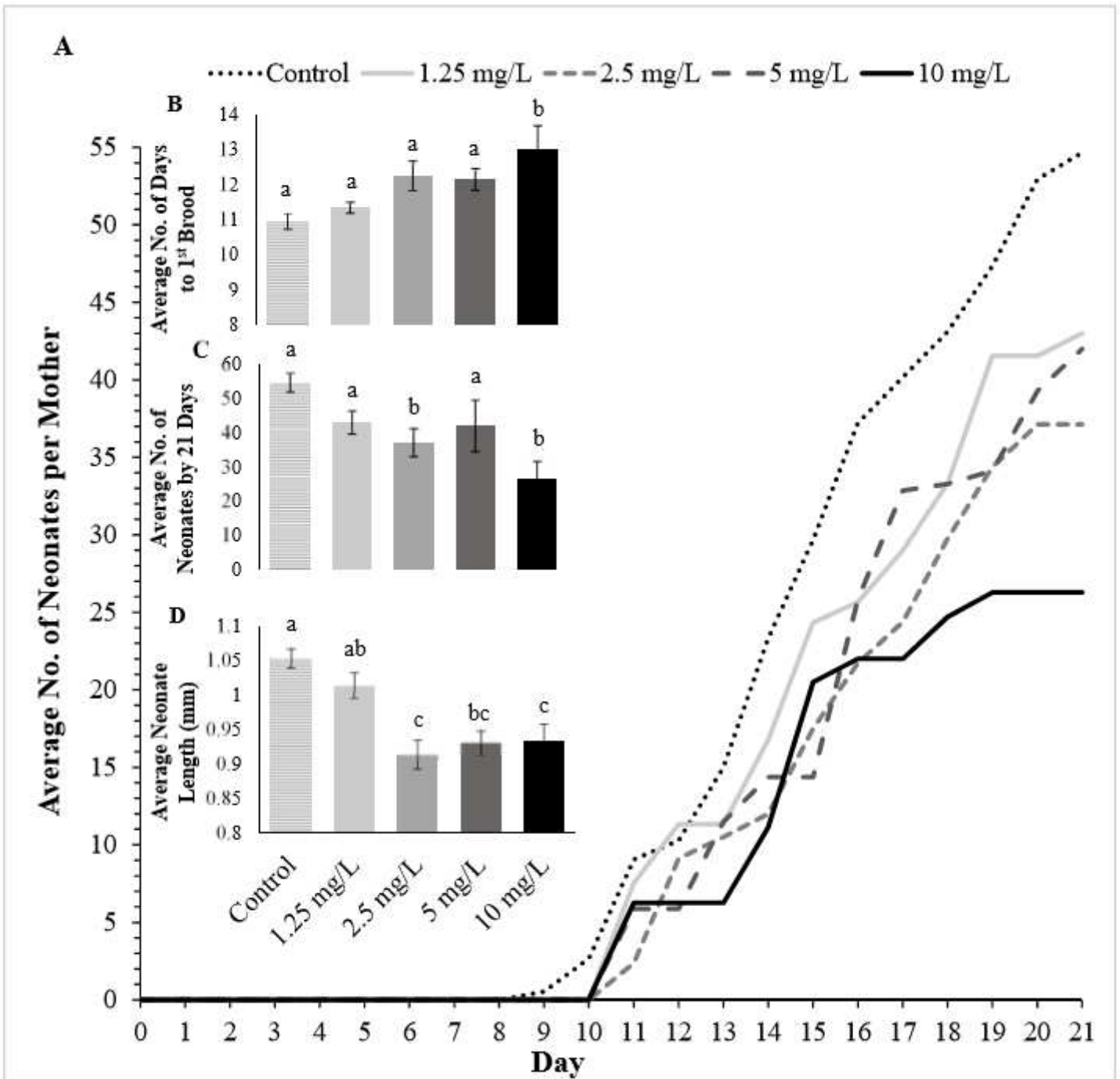
- Wink M, Hartmann T (1982) Diurnal fluctuations of quinolizidine alkaloid accumulation in legumes and cell suspension cultures. *Zeitung für Naturforschung C* 37:369-375. doi:10.1515/znc-1982-5-604.
- Wink M, Meißner C, Witte L (1995) Patterns of quinolizidine alkaloids in 56 species of the genus *Lupinus*. *Phytochemistry* 38:139-153. doi:10.1016/0031-9422(95)91890-D.
- Yang L, Stockigt J (2010) Trends for diverse production strategies of plant medicinal alkaloids. *Nat Prod Rep* 27:1469-1479. doi:10.1039/c005378c.
- Yang M, Ruan J, Fu PP, Lin G (2016) Cytotoxicity of pyrrolizidine alkaloid in human hepatic parenchymal and sinusoidal endothelial cells: Firm evidence for the reactive metabolites mediated pyrrolizidine alkaloid-induced hepatotoxicity. *Chem-Biol Interact* 243:119-126. doi:10.1016/j.cbi.2015.09.011.
- Yang XQ, Ye J, Li X, Li Q, Song YH (2019). Pyrrolizidine alkaloids-induced hepatic sinusoidal obstruction syndrome: Pathogenesis, clinical manifestations, diagnosis, treatment, and outcomes. *World Journal of Gastroenterology* 25:3753–3763. doi:10.3748/wjg.v25.i28.3753.
- Yovo K, Huguet F, Pothier J, Durand M, Breteau M, Narcisse G (1984) Comparative pharmacological study of sparteine and its ketonic derivative lupanine from seeds of *Lupinus albus*. *Planta Medica* 50:420-424. doi:10.1055/s-2007-969753.
- Zagatto PA (1989) Aspects theoriques et pratiques inherents a l'homologation des pesticides. Vol. 1. Etude comparative de la toxicite chronique du pentachloriophenol vis-a-vis de *Daphnia magna* et de *ceriodaphnia dubia*. Centre des Sciences de l'Environnement, Universite de Metz, France, p. 37.
- Zarate CA Jr, Payne JL, Singh J, Quiroz JA, Luckenbaugh, DA, Denicoff KD et al. (2004) Pramipexole for bipolar II depression: a placebo-controlled proof of concept study. *Biol. Psychiatry* 56:54–60. doi:10.1016/j.biopsych.2004.03.013.

## Figures



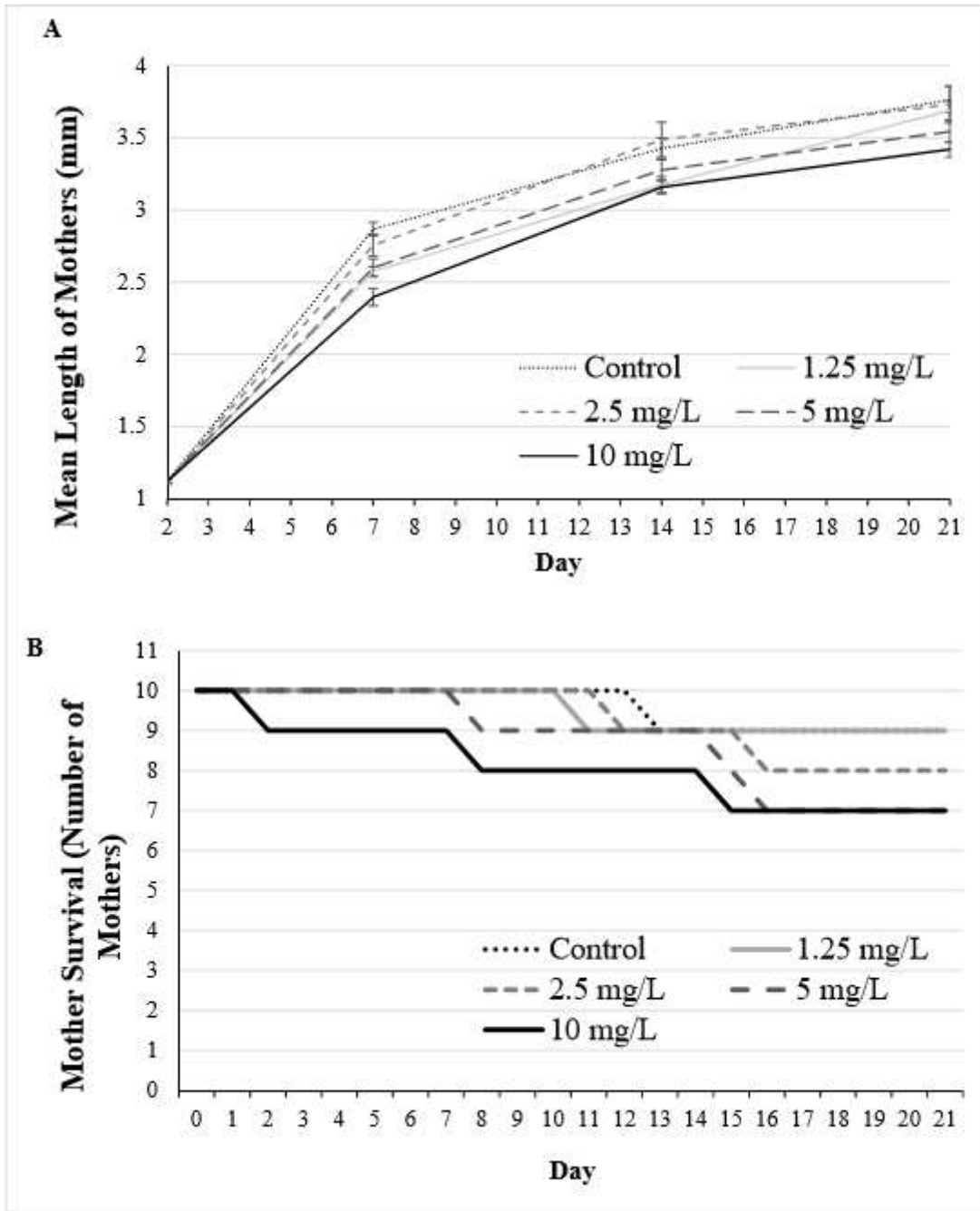
**Figure 1**

Concentration of quinolizidine (N = 5) and indole (N = 1) alkaloids in the crude plant extract of *Lupinus angustifolius*. Values are in µg/L.



**Figure 2**

a) Cumulative reproduction of each treatment group over the 21-day exposure period. Data is the cumulative mean number of neonates per mother for each treatment on each day; b) Mean number of days to production of first brood,  $\pm$  standard error; c) Mean cumulative number of neonates per mother by 21 days,  $\pm$  standard error; d) Mean length of neonates (mm),  $\pm$  standard error. Small letters signify significant differences between treatments (3b: Kruskal-Wallis one-way ANOVA on ranks followed by an unadjusted Dunn's test; 3c and 3d: one-way ANOVA followed by a Tukey HSD test).



**Figure 3**

a) Mean mother length (mm) of daphnid mothers exposed to different sparteine concentrations,  $\pm$  standard error; b) Mother survival in each treatment group throughout the 21 days.

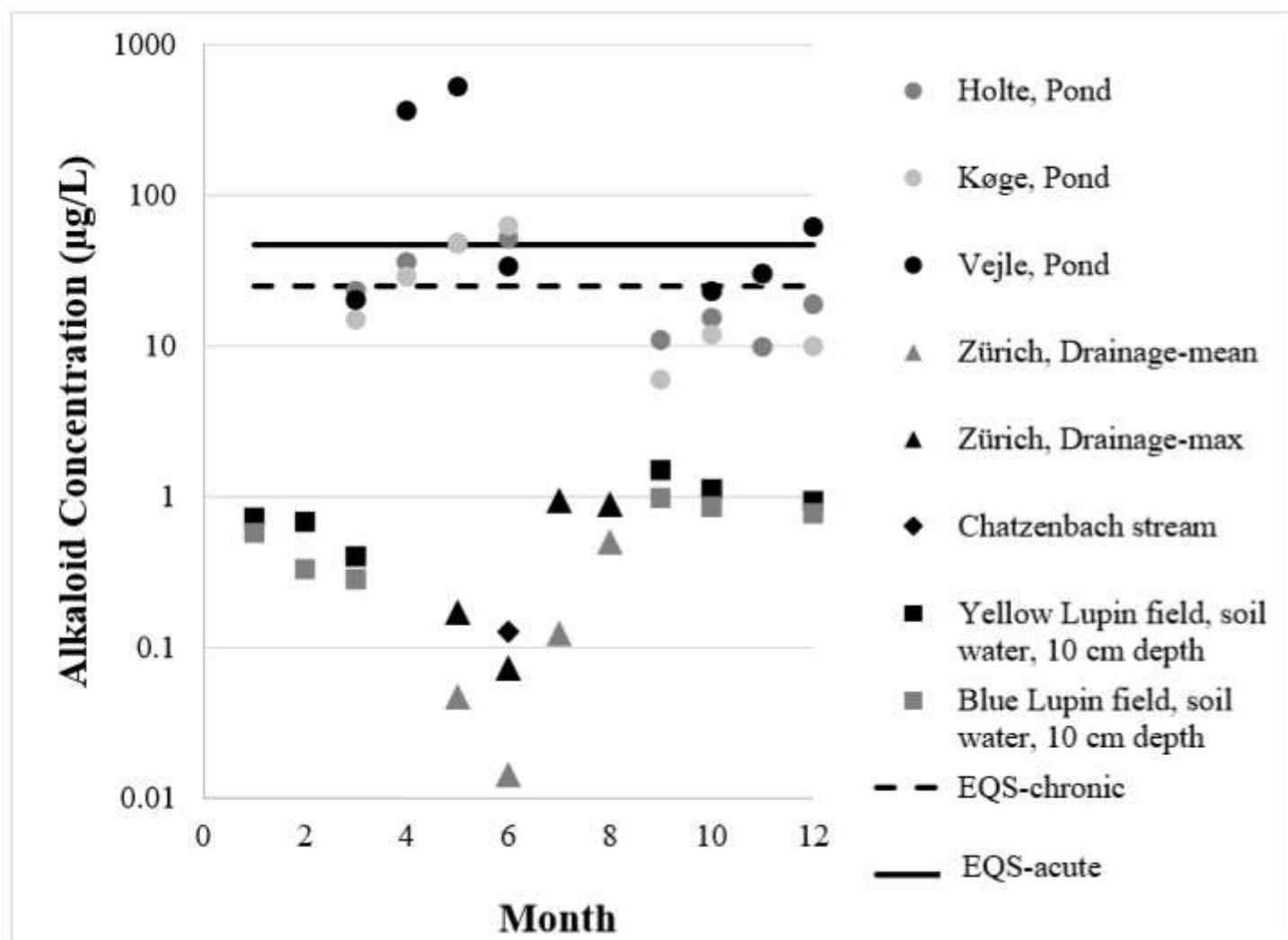


Figure 4

Measured alkaloid concentrations in soil-, drain- and surface waters monitored in Denmark and Switzerland at different times during the year from January (month 1) to December (month 12) (Hama & Strobel, 2020b, Hama, 2020). The acute and chronic EQS values for the summed alkaloid concentrations are given by a full and broken line, respectively.

## Supplementary Files

This is a list of supplementary files associated with this preprint. Click to download.

- [GriffithsSupplementaryMaterial.pdf](#)