

Gut microbiota and butyrate contribute to nonalcoholic fatty liver disease in premenopause due to estrogen deficiency

Limin Liu (✉ 18561810828@126.com)

Shandong University Qilu Hospital <https://orcid.org/0000-0001-9000-4192>

Fu Qingsong

Shandong University Qilu Hospital

Li Tiantian

Shandong University Qilu Hospital

Shao Kai

Shandong University Qilu Hospital

Zhu Xing

Shandong University Qilu Hospital

Cong Yingzi

Texas State University

Zhao Xiaoyun

Shandong University Qilu Hospital

Research

Keywords: NAFLD, estrogen, intestinal flora, SCFA, lipid metabolism

Posted Date: January 2nd, 2020

DOI: <https://doi.org/10.21203/rs.2.19903/v1>

License: © ⓘ This work is licensed under a Creative Commons Attribution 4.0 International License.

[Read Full License](#)

Version of Record: A version of this preprint was published at PLOS ONE on February 2nd, 2022. See the published version at <https://doi.org/10.1371/journal.pone.0262855>.

Abstract

Background The incidence of nonalcoholic fatty liver disease (NAFLD) in postmenopausal women has increased significantly. NAFLD can be effectively inhibited by estrogen, but the severe side effects, especially the increased risk of malignant tumors, limit its application. Thus, it is of great clinical significance to explore the mechanism by which estrogen inhibits NAFLD. Gut microbiota and its metabolites short chain fatty acids (SCFA) have been shown to play important roles in the development of NAFLD.

Objective In this study, we investigated the impact of estrogen deficiency on the gut microbiome and SCFA in both NAFLD patients and an experimental NAFLD model in premenopause.

Methods The levels of estrogen, insulin and leptin was measured using ELISA. Gut microbiota was analyzed by 16S rRNA gene sequence analysis. Tissue sections were stained with hematoxylin and eosin. SCFAs were determined with Agilent 6890 N gas chromatography (GC). We quantified mRNA levels of genes in our study by quantitative real time-PCR. Additionally, Western Blotting was used to validate protein expression.

Results We showed that female NAFLD patients had much lower estrogen levels. Estrogen deficient mice, due to ovariectomy (OVX), suffered more severe liver steatosis with an elevated body weight, abdominal fat weight, and serum triglycerides with deterioration in histological hepatic steatosis. Altered gut microbiota composition and decreased butyrate content were found in patients with NAFLD and in OVX mice. Furthermore, fecal microbiota transplantation (FMT) or supplementing with butyrate markedly alleviated NAFLD in OVX mice. The production of antimicrobial peptides (AMP) RegIIIg, β -defensins 1, 3 and the expression of intestinal epithelial tight junction, including ZO-1 and occludin5, were decreased in the OVX mice compared to control mice. Upregulation of PPAR- α and VLDLR and downregulation of PPAR- γ indicated that OVX mice suffered from abnormal lipid metabolism.

Conclusions These data indicate that changes in the gut microbiota and SCFA caused by estrogen reduction, together with a disorder in AMP production and lipid metabolism, promote NAFLD, thus provide microbiota derived SCFAs as new therapeutic targets for the clinical prevention and treatment of NAFLD.

Background

NAFLD has been recognized as one of the most prevalent etiologies of chronic liver disease worldwide [1]. NAFLD is mainly characterized by fat accumulation in the hepatocytes. Such excessive lipid accumulation can evolve into non-alcoholic steatohepatitis (NASH), cirrhosis, and, finally, hepatocellular carcinoma (HCC) [2]. Thus, patients with NAFLD have a high risk of progressing to cirrhosis and HCC and are at an increased risk for liver-related mortality [3]. Given the great threat posed by NAFLD to human health and its poor prevention strategy, there is a need to characterize its pathogenesis better and to identify potential therapeutic targets for patients with NAFLD.

NAFLD can be effectively inhibited by estrogen. Compared to men, women are generally more resistant to obesity and the accompanying NAFLD, although menopause is a risk factor [4]. NAFLD is found three times more often in women after menopause than before it [5]. It has shown that postmenopausal women who receive hormonal therapy are less likely to develop NAFLD than postmenopausal women who do not [6]. Although NAFLD can be effectively alleviated by estrogen, the severe side effects, such as the increased risk of breast cancer, limit its clinical application. Moreover, the precise mechanisms by which estrogen prevents hepatic steatosis have not been fully elucidated.

An accumulating evidence has indicated that gut microbiota plays an important role in host fat metabolism and in the development of NAFLD [7]. Germ-free mice gained less weight than conventional mice when given a sugar and lipid-rich diet, despite their greater food consumption [8], and developed enhanced susceptibility to hepatic steatosis after restitution with gut microbiota from NAFLD mice [9]. In recent years, further evidence of interaction between the gut and the liver has been emerging. Hepatic products can directly influence the microbiota composition, whereas bacteria may have both direct and indirect effects on liver function and physiology [10-11], suggesting that the gut-liver axis is an important component in the development of NAFLD. However, it is not known whether the gut microbiota composition is changed in NAFLD induced by estrogen deficiency.

The gut bacterial metabolites also mediate interactions with the host. SCFA are a major class of bacterial metabolites and are mainly produced in the colon by bacterial fermentation of otherwise indigestible fibers [12]. After absorption by the colonocytes, these SCFAs are either used locally as fuel for colonic mucosal epithelial cells or enter the portal bloodstream [13]. Beyond their importance for intestinal integrity, SCFAs have been shown to benefit the host by exerting anti-obesity and anti-diabetic effects [14–16].

The gut microbiota and SCFA associated with NAFLD induced by estrogen deficiency have not yet been systematically assessed. We showed here that the gut microbiota composition and the butyrate content differed between estrogen deficient NAFLD patients/mice and the controls. FMT or supplementation with butyrate can alleviate NAFLD. Furthermore, estrogen deficiency has a potent effect on intestinal epithelial cells and on the lipid metabolism pathway.

Methods

Patient Population

Female NAFLD patients and normal controls, aged between 35–45 years, attending Qilu Hospital of Shandong University between August 2018 and August 2019 were included in our experiment. Informed consent was signed. The diagnostic criteria for NAFLD had to meet the following requirements: 1) No history of drinking, or an ethanol intake of less than 70g/week (female) for at least one year prior to the experiment; 2) Participants were without any of the following: viral hepatitis, drug-induced liver disease, total parenteral nutrition, hepatolenticular degeneration, autoimmune liver disease or any other specific diseases that can lead to fatty liver disease; 3) Liver imaging manifestations conformed to the diagnostic

criteria for diffuse fatty liver disease. Patients who had used antibiotics or other special drugs in the past three months for systemic diseases such as diabetes and hypertension and those with unqualified fecal DNA were excluded from participation in the study.

Animals and Experimental Design

Female C57BL/6 mice aged at 6-8 weeks were purchased from Jinan Pengyue animal company. All animals received humane care following the Guide for the Care and Use of Laboratory Animals approved by Shandong University. Throughout the study period, all animals had access to food and water *ad libitum* and were maintained on a 12 h light/dark cycle ($21 \pm 2^{\circ}\text{C}$ with a relative humidity of $45 \pm 5\%$). After one week of adaptation, animals were randomly divided into the following four groups ($n=8$): normal diet (C group), sham-operated+ high fat diet (HFD, 60 kcal% Fat, research diets, New Brunswick, Canada) (SH group), OVX+HFD (OH group), OVX+HFD+FMT (OHF group). Two weeks after OVX, the mice were given HFD. FMT was performed based on an established protocol [17]. Control animals received the same volume of saline solution. Animals were sacrificed 4 w after HFD administration; whole livers were immediately prepared for histological analysis; some materials were stored at -80°C for RNA and western blot preparation, and blood samples were collected for biochemical analysis. Liver function was assayed by the serological activities of alanine aminotransferase (ALT) and aspartate aminotransferase (AST) by using the Hitachi 7600-020 clinical analyzer (Hitachi, Tokyo, Japan).

Isolation of Intestinal Epithelial Cells (IEC)

The small intestines were incubated with 5 mM EDTA at 37°C for 40 min. Cells were collected by passing the supernatant through a 100- μm cell strainer (BD Falcon, Fremont, CA). After washing with PBS, IEC were separated from a 20/40% Percoll interface (Amersham Pharmacia Biotech, Amersham, UK).

Fecal DNA Extraction and 16S rRNA Gene Sequence Analysis of Gut Microbiota

Fresh feces were collected into individual sterile Ependorf tubes and then frozen immediately at -80°C until DNA extraction. The total bacterial community DNA was extracted using the TIANamp Stool DNA Kit (Tiangen Biotech Co., Ltd., Beijing, China) according to the manufacturer's instructions.

After DNA extraction from the feces samples, we used polymerase chain reaction (PCR) amplification and pyrosequenced the V3 and V4 regions of the bacterial 16S ribosomal RNA gene (forward primer, 5-ACTCCTACGGGAGGCAGCAG-3; reverse primer, 5-GGACTACHVGGGTWTCTAAT-3). Barcoded V3-V4 amplicons were sequenced using the pair-end method by an Illumina MiSeq sequencing platform at the Shanghai Biotree Biotechnology Company (Shanghai, China). Sequences with an average Phred score lower than 30, containing ambiguous bases, with homopolymer runs exceeding 6 bp, having mismatches in primers, or having a length shorter than 100 bp were removed. Only sequences with an overlap longer than 10 bp and without any mismatches were assembled according to their overlap sequence. Reads that could not be assembled were discarded. Barcode and sequencing primers were trimmed from the assembled sequence [18].

Histological Evaluation

Liver and colon sections (5- μ m) were prepared for paraffin-embedded cross-sectioning and stained with hematoxylin and eosin (H&E). Lesion images were captured with a microscope (Olympus, Tokyo, Japan).

Determination of Estrogen, Insulin and Leptin in Serum

The levels of estrogen, insulin and leptin in the serum were analyzed with Enzyme-Linked Immunoassay (ELISA) kits (Neobioscience Technology Co., Ltd., Shenzhen, China) according to the manufacturer's instructions.

Determination of Content of SCFAs

According to the reported method [19] with some modifications, the contents of SCFAs including acetic, propionic, n-butyric, i-butyric, n-valeric and i-valeric acids were determined with Agilent 6890 N gas chromatography (GC) equipped with a HP-INNOWAX column (30 m \times 0.25 mm \times 0.25 m; J & W Scientific, Agilent) and a flame ionization detector (FID). Briefly, the fecal content (50 mg) was mixed with 250 mL of deionized water; 150 mL of the slurry was then mixed with an equal volume of 0.3 mg/mL of 2-ethylbutyric acid (an internal standard). The mixture was centrifuged at 8000 rpm for 5 min, and the supernatant was filtered through a 0.45 μ m membrane for SCFA analysis. The operating conditions were set as follows: the initial column temperature was kept at 100°C for 1 min, then increased to 180°C at a rate of 5°C /min and kept at 180°C for 4 min. The flow rates for N₂, H₂, and air makeup gas were set at 30, 30 and 260 mL/min, respectively.

Quantitative Real-time PCR

Total RNA was extracted with TRIzol (Life Technologies) and quantified for cDNA synthesis. Quantitative real-time PCR reactions were performed by using SYBR Green Gene Expression Assays (Bio-Rad, Hercules, CA, USA). Quantification was undertaken using the $2^{-\Delta\Delta C_t}$ method (Livak and Schmittgen, 2001). All data were normalized to GAPDH mRNA expression. The primers are listed in supplementary material.

Immunoblot

Protein concentrations were determined with a bicinchoninic acid (BCA) assay kit (Pierce Biotechnology, Rockford, IL). Primary antibodies against RegIIIg, β -defensins 1 (Affinity, Cincinnati, USA), Occludin5, PPAR- γ , VLDLR and PPAR- α (all at 1:1000), and anti- β -actin (at 1:5000), all from Proteintech (Proteintech, Chicago, USA) were used in this study. The relative density of protein bands was quantitated with ImageJ version 1.5s (<http://imagej.nih.gov/ij/>) provided in the public domain by the National Institutes of Health, Bethesda, MD.

Statistical Analysis

All values are presented as mean \pm SD for each group. The data were analyzed by one-way ANOVA followed by a least significant difference (LSD) post hoc test; the level of significance was set at $p < 0.05$. SPSS 20.0 software (Chicago, IL, USA) and GraphPad Prism 6.0 software (La Jolla, CA) were used to perform the statistical analysis.

Results

Female NAFLD patients have significantly lower estrogen and altered gut microbiota compared to the control group

According to the lab design, females were divided into the NAFLD and control group depending on the ultrasound results for fatty liver. The results showed that there was no significant difference in age between the two groups. As shown in **Figure 1A**, the NAFLD group had a higher BMI and abdominal circumference, which are characteristics of obesity. However, blood glucose levels showed no statistical difference, while insulin, HOMA-IR, and triglyceride were higher in the NAFLD group, indicating the NAFLD group were insulin resistant. The average estrogen level of the NAFLD group was lower than that in the control group (74.72 ± 10.30 pg/mL vs 140.6 ± 15.76 pg/mL).

To investigate whether the gut microbiota composition differed between the two groups, we performed Illumina HiSeq 16S rRNA gene sequencing, which produced 8557224 clean reads from 45 samples. The extent of the OTUs (operational taxonomic units) shared between the two groups are summarized in the Venn diagram (**Figure 1B**). 617 OTUs were common, while 143 were unique to the control and 99 to the NAFLD group, revealing less OTU diversity in the NAFLD group. Rarefaction curves indicated that most gut microbial organisms in each sample were captured with the current sequencing depth (**Figure 1C**). As illustrated in **Figure 1D**, *Bacteroidetes*, *Firmicutes*, and *Proteobacteria* were the three dominant phyla. The abundance of *Bacteroidetes* and *Proteobacteria* exhibited significant differences between the two groups. The differences in the genera level are shown in **Figure 1E**. The abundance of *Bacteroides*, *Alistipes*, and *Unassigned* was much higher in the NAFLD group than control. LEfSe (LDA Effect Size) was used to explore significant changes and relative richness in the bacterial communities of the two groups, and five genera were identified with LDA scores (**Figure 1F**). Collectively, these results showed that estrogen significantly affected the composition of the gut microbiota.

Estrogen deficient mice develop severe NAFLD, and FMT attenuates NAFLD induced by estrogen deficiency.

To investigate whether estrogen deficiency is a promoter of NAFLD, mice were administrated with OVX followed by an HFD to induce NAFLD following estrogen reduction. At the same time, FMT was administered to some of the OH mice to observe whether FMT would attenuate the NAFLD (OHF group). As shown in **Figure 2A**, following OVX, the OH group had lower levels of estrogen than the SH group, indicating that OVX successfully reduces estrogen in animal models. **Figure 2B** shows the OH group weighed significantly more than the SH group, but a large reduction in body weight occurred in the OHF

group. In addition, an increase in abdominal fat was found in the OH group, however, the OHF group had significantly less.

However, differences in liver mass were not found in all groups of mice. Estrogen reduction in the OH mice had clearly exacerbated fatty liver. According to the HE staining, the OH group showed more hepatic steatosis than the SH group, in that it had more lipid droplets and inflammatory cell infiltration. But the OHF group showed greater mitigation in hepatic steatosis than the OH group (**Figure 2C**). These results indicated that estrogen reduction would exacerbate NAFLD, but that FMT could inhibit the NAFLD in the OH mice. In addition, the NAFLD condition was assessed by the serum biochemical index. Compared with the OH group, the SH and OHF groups both had lower total cholesterol (TC) and leptin than the OH group. Serum glucose, insulin and HOMA-IR level in OH group were higher than in the SH and OHF group (**Figure 2D**). Although the amounts of ALT, AST and triglyceride (TG) in the OH group were slightly higher than in the SH group, no statistical differences were found. Put all together, these results indicated that estrogen reduction worsened NAFLD, while FMT could significantly relieve the condition.

The composition of the gut microbiota was changed in mice with NAFLD induced by OVX.

We then investigated whether OVX results in alterations in the composition of the gut microbiota. In total, 2,164,126 useable reads and 359 OTUs were obtained from 26 samples. The Shannon indexes were lower in the OH group compared with C and SH groups (**Figure 3A**). Moreover, a Venn diagram of the three groups revealed that 312 OTUs overlapped among the groups: 322 OTUs were present in both the C and SH groups; 322 in both the C and OH groups; and 323 in both the SH and OH groups (**Figure 3B**). PCoA (principal co-ordinates analysis) showed that gut microbiota in the C group were different from those in the SH and OH groups (**Figure 3C**). The system clustering tree also indicated significant differences between each group, although the distance between the SH group and the OH group was small (**Figure 3D**).

We further investigated the gut microbiota species and their relative abundance. As shown in **Figure 3E**, at the phylum level, 10 phyla could be found in all samples and the most abundant phyla in all samples were: *Firmicutes*, *Bacteroidetes*, *Proteobacteria*, and *Epsilonbacteraeota*. Conversely, *Verrucomicrobia* were detected in the SH and OH groups but not in the C group. Furthermore, at a genus level classification, *Faecalibaculum* and *Helicobacter* were more common in the SH and OH groups but less abundant in the C group. Interestingly, results from **Figure 3F** show that the presence of *Muribaculaceae* and *Lactobacillus* in the SH and OH groups were significantly decreased relative to those in the C group. Furthermore, the presence of *Firmicutes* was significantly lower in the OH group compared with that in the SH group; whereas the relative abundance of *Epsilonbacteraeota* was remarkably higher. The relative abundance of *Butyricicoccus*, *Roseburia*, and *Eubacterium* were diminished in the OH group compared with the SH group.

LefSe analysis was performed with the pooled data to identify specific taxa that could be used as biomarkers and dominant microbiota for each group. A cladogram for family and genus level abundance is shown in **Figure 4A**. In total, 41 genera were identified with LDA scores > 3.5 (**Figure 4B**). For correlation

analysis, genera level correlations with SCFA and serological indicators such as Estrogen, TC, and leptin are shown in **Figures 4C and 4D**. *Peptococcus* and *Romboutsia* were positively, while *Ruminiclostridium-6* and *Muribaculum* were negatively correlated with SCFA. The occurrence of the genera exhibited a positive correlation with TC, leptin and body weight. Surprisingly, estrogen showed negative correlations with most of the genera detected. Put all together, our results showed that estrogen could modulate gut microbiota composition in NAFLD model mice.

Butyrate is decreased in NAFLD patients and in the OH mice, and supplementation with butyrate inhibits NAFLD caused by estrogen reduction.

To determine whether SCFA was changed in NAFLD patients with decreased estrogen, the concentration of their SCFA was examined. The butyrate content was much lower in the NAFLD patients than that in the controls (**Figure 5A**). However, the concentration of other SCFAs showed no difference between the two groups. Butyrate was also significantly decreased in the OH mice compared with the SH group (**Figure 5B**). Consistently, the other SCFAs showed no change. The content profile of SCFAs in OH mice was similar to that found in the NAFLD patients with decreased estrogen. These results indicate that the butyrate content is affected by estrogen in the NAFLD model.

To determine whether decreased butyrate causes the NAFLD according to estrogen reduction, the OH group was given butyrate 200mg/kg for 4 weeks (named the OHB group). Results showed that the OHB group had no statistical difference in body and abdominal fat mass compared with the OH group, but after receiving the butyrate complement, their liver weight was largely decreased (**Figure 5C**). HE staining also demonstrated that hepatocyte steatosis was reduced in the OHB group (**Figure 5D**). Furthermore, serum biochemical indicators also showed lower serum TC, leptin, blood glucose, and insulin in OHB mice, but no statistical differences were shown between the groups for ALT and AST (**Figure 5E**).

Estrogen reduced mice have lower production of antimicrobial peptide (AMP) in IEC.

We then investigated whether the altered microbiota and butyrate levels in estrogen reduced mice affect IEC function. AMP produced by IEC of Paneth cells play a critical role in regulation of host and microbiota interaction. In order to study AMP production, IEC were collected to determine their AMP expression. Based on the results from qRT-PCR, the OH group had decreased expression of Reg3 γ , β -defensins 1 and 3 than the SH group at mRNA levels (**Figure 6A**), and protein level of Reg3 γ and β -defensins 1 were also decreased (**Figure 6B and C**). However, no difference was detected between the two groups for β -defensins 4. These results confirmed that AMP production was decreased in mice with NAFLD caused by estrogen reduction.

Expression of intestinal epithelial tight junction related genes and proteins are changed in estrogen reduced mice.

The mechanism by which hepatic steatosis is induced by estrogen reduction was studied. Because the integrity of the intestinal epithelium plays a crucial role in maintaining a balance in fatty acid intake,

damage to the intestinal epithelial barrier leads to an increase in fatty acid intake and potentially to fatty liver disease. The barrier function of the intestinal epithelium were investigated. The expression of the ZO-1 and Occludin5 genes were lower in the OH group than in the SH group (**Figure 7A**), and expression of the protein Occludin5 had also significantly declined in the OH group (**Figure 7B**). In addition, HE staining showed that the OH group had reduced number of epithelium cells nucleus with thickening of the intestinal wall (**Figure 7C**). The results confirmed that the intestinal epithelial barrier function was damaged in estrogen reduced mice.

Fatty acid (FA) synthesis, intake, and oxidation related gene and protein expression are changed in estrogen reduced mice.

As the central organ in the metabolic reactions, the liver plays an important role in maintaining metabolic balance. NAFLD is a disease expressed through multiple metabolic disorders and especially in FA metabolism. We hypothesize that mice with an estrogen reduction have a disorder of FA metabolism pathway. Therefore, genes and protein related to FA metabolism were tested in these mice. The expression of the lipid synthesis-related genes, SREBP1, PPAR- α , FAS and CHREB were found to be significantly increased with estrogen reduction (**Figure 8A**). Moreover, in comparison with the SH group mice, the OH group had a significantly greater expression of the lipid intake related gene VLDLR (**Figure 8B**), while the lipid oxidation related genes, PPAR- α and ACAA, had lower expression in the OH group (**Figure 8C**). The Western blot shown that the OH group mice had increases in PPAR- α and VLDLRB proteins but PPAR- β expression had decreased (**Figure 8D**). In summary, estrogen was shown to be a crucial factor in FA metabolism regulation in the liver.

Discussion

NAFLD is a frequent cause of chronic liver disease, but the therapeutic options for this disease are limited. Although the reasons for the increased incidence of obesity and NAFLD in postmenopausal women are not fully understood, the reduction in estrogen levels is considered an important obesity-triggering factor. Previous studies have shown the promotional effect of estrogen deficiency during the process of hepatic steatosis in menopausal women [20]. Moreover, with the decrease in estrogen, OVX mice tend to accumulate body fat and become obese [21]. Several studies have shown that targeted intervention with estrogen is therapeutically efficient in inhibiting NAFLD, including a study by Wagner [22]. In current study, we found that women aged 35–45 with NAFLD had significantly lower estrogen levels than the controls, while they also had higher BMI, abdominal circumference, insulin and triglyceride levels, indicating that decreased estrogen is a factor that promotes NALFD. Additionally, in the animal model, OVX resulted in serious hepatic steatosis, while FMT markedly alleviated NAFLD in OVX mice. All these results suggest that, although the pathophysiological role of estrogen deficiency in hepatic steatosis has not been fully elucidated, it is undoubtedly a prominent feature.

Growing evidence supports the role of gut microbiota in obesity and NAFLD. Indeed, accumulating evidence indicates that compositional changes in gut microbiota have been proposed as mechanistically

contributing to the progression of NAFLD [23-25]. A study by Boursier et al. [26] demonstrated that the severity of NAFLD is associated with gut dysbiosis and a shift in the metabolic function of the gut microbiota. Moreover, Rabot et al. [27] observed that GF mice receiving HFD showed enhanced insulin sensitivity with improved glucose tolerance and reduced insulinaemia. This is in line with the study of Kreznar et al. [28]. In our study, we also found that the structure of the gut microbiota was changed in NAFLD patients and mice induced by OVX. Additionally, our data also demonstrated that the expression of AMP was inhibited in OVX mice with decreased butyrate content, which is in line with the study by Cong et al. [29]. In light of this, drugs targeting AMP production through the promotion of intestinal homeostasis might serve as promising candidates for clinical application. Gut microbiota-targeted interventions may prove to be an effective and innovative approach for treating NAFLD. FMT has been shown to be effective in the treatment of severe gastrointestinal diseases [30]. Le Roy et al. [31] showed that susceptibility to the development of NAFLD was transmissible via FMT between mice, indicating a potential causative role for gut microbial dysbiosis in the occurrence or evolution of the hepatic disease. Consistent with these results, our study also demonstrated that FMT can markedly attenuate NAFLD caused by estrogen deficiency in an animal model. Our study also provides the evidence for the effective treatment of NAFLD in menopausal women. It makes sense to explore possible therapeutic interventions targeting the gut microbiota.

Many studies have shown abnormal levels of SCFA in NAFLD patients [32–33]. Through reabsorption and distribution, SCFA can affect intestinal barrier health, which is very important in the pathogenesis of NAFLD. Destruction of the gut barrier has been associated with the translocation of lipopolysaccharides (LPS), leading to endotoxemia that drives NAFLD progression [34]. SCFAs, mainly butyrate and propionate, reduce gut inflammation and preserve gut barrier integrity, potentially limiting the translocation of LPS [35]. Consistent with these results, our study also demonstrated that butyrate is significantly decreased in the NAFLD patient and mice with decreased estrogen, while supplementing with butyrate eased hepatic steatosis, indicating butyrate as a potential therapy for NAFLD in menopausal women.

Increased uptake of circulating FA, increased hepatic lipogenesis, reduced rate of FA oxidation and reduced FA secretion are the multiple mechanisms that lead to an increased accumulation of lipids in the liver [36]. Studies have shown that butyrate restores PPAR α activation in HFD fed rats, thus enhancing FA β -oxidation, inhibiting lipid synthesis and downregulating nuclear factor-kappa B pathways and inflammation [37–38]. In the current report, our data also showed that OVX mice with decreased butyrate content had upregulation of FA intake and synthesis but downregulation of oxidation related gene and protein expression. These observations clearly emphasize the importance of the lipid metabolism balance in the development of hepatic steatosis.

In conclusion, our findings provide evidence that estrogen deficiency deteriorates NAFLD, interfering with gut bacteria and supplementing with butyrate can markedly attenuate NAFLD. By identifying the mechanism by which estrogen regulates NAFLD, our findings provide a rationale for novel therapeutic approaches to ameliorate NAFLD. Further studies are needed to elucidate the interaction of estrogen with

gut microbiota in greater detail, with the aim of identifying targets for pharmacological intervention to mimic the protective effects of estrogen. Due to the severe side effects of estrogen, the closer investigation into manipulating gut bacteria as a strategy for the pharmacological amelioration of NAFLD appears a promising goal. Nevertheless, although estrogen has been demonstrated to protect the liver from steatosis, the characterization of its role against NAFLD via the gut bacteria and butyrate will expand our understanding of this liver protector through new insights.

Conclusions

In this study, we demonstrated that estrogen deficiency promotes and accelerates the deterioration in NAFLD. The composition of gut microbiota in both NAFLD patients and mice was altered, and FMT attenuated estrogen deficiency induced NAFLD in mice. Butyrate, a metabolite of the gut microbiota, was significantly decreased in both NAFLD patients and OVX mice. Supplementing with butyrate improved the NAFLD condition of the mice. These results highlight the importance of the gut microbiota and its metabolite SCFA in regulation of NAFLD caused by estrogen deficiency. To the best of our knowledge, this is the first study to document the key role of the gut microbiota and SCFA in a NAFLD model induced by estrogen deficiency.

Declarations

Acknowledgements

Not applicable.

Authors' contributions

LLm and ZXy designed research. LLm, FQs, LTt, SK, and ZX carried out experiments. LLm and LLt analyzed data and prepared the figures. LLm wrote the manuscript. CYz reviewed the manuscript. All authors read and approved the final manuscript.

Funding

This work was supported by the Key Scientific Research Fund of Qilu Hospital (Qingdao), Shandong University.

Availability of data and materials

The datasets used and/or analyzed during the current study are available from the corresponding author on reasonable request.

Ethics approval and consent to participate

All protocols were approved by the Institutional Ethics Committee of Shandong University, and all tissues used in this study were from patients who provided written informed consent. All animals treatment operations were executed according to the Shandong University Ethical Guidelines for Animal Experiment.

Consent for publication

Not applicable.

Competing interests

The authors declare that they have no competing interests.

Author details

¹Medical Experiment Center of Qilu Hospital (Qingdao), Shandong University, Qingdao, China. ²Qingdao Key Lab of Mitochondrial Medicine, Qilu Hospital (Qingdao), Qingdao, China. ³Department of Pathology of Qilu Hospital (Qingdao), Qingdao, China. ⁴Department of Microbiology and Immunology, University of Texas Medical Branch, Galveston, TX, USA. ⁵Department of Pathology, University of Texas Medical Branch, Galveston, TX, USA.

Abbreviations

NAFLD, nonalcoholic fatty liver disease; SCFA, short chain fatty acids; OVX, ovariectomy; FMT, fecal bacteria transplantation; AMP, antimicrobial peptides; NASH, non-alcoholic steatohepatitis; HCC, hepatocellular carcinoma; HFD, high fat diet; C, normal diet group; SH, sham-operated+HFD group; OH, ovariectomy+HFD group; OHF, ovariectomy+HFD+fecal transplantation group; OHB, ovariectomy + HFD+butyrate group; ALT, alanine aminotransferase; AST, aspartate aminotransferase; IEC, intestinal epithelial cells; BMI, body mass index; OTUs, operational taxonomic units; LPS, lipopolysaccharides; FA, fatty acids.

References

1. Younossi ZM, Koenig AB, Abdelatif D, Fazel Y, Henry L, Wymer M. Global epidemiology of nonalcoholic fatty liver disease-Meta-analytic assessment of prevalence, incidence, and outcomes. *Hepatology*. 2016;64(1):73-84.
2. [Karim MF](#), [Al-Mahtab M](#), [Rahman S](#), [Debnath CR](#). Non-alcoholic fatty liver disease (NAFLD)–A review. *Mymensingh Medical Journal*. 2015;24(4):873-80.
3. Dulai PS, Singh S, Patel J, Soni M, Prokop LJ, Younossi Z, et al. Increased risk of mortality by fibrosis stage in nonalcoholic fatty liver disease: Systematic review and meta-analysis. *Hepatology*. 2017;65(5):1557-65.
4. [Kapoor E](#), [Collazo-Clavell ML](#), [Faubion SS](#), Faubion. Weight gain in women at midlife: a concise review of the pathophysiology and strategies for management. *Mayo ClinProc*. 2017;92(10):1552-58.

5. Kozakowski J, Gietka-Czernel M, Leszczyńska D, Majos A. Obesity in menopause-our negligence or an unfortunate inevitability? *PrzMenopauzalny*. 2017;16(2):61-65.
6. Clark JM, Brancati FL, Diehl AM. Nonalcoholic fatty liver disease. *Gastroenterology*. 2002;122(6):1649-57.
7. Le Roy T, Llopis M, Lepage P, Bruneau A, Rabot S, Bevilacqua C, et al. Intestinal microbiota determines development of non-alcoholic fatty liver disease in mice. *Gut*. 2013;62(12):1787-94.
8. Bäckhed F, Manchester JK, Semenkovich CF, Gordon JI. Mechanisms underlying the resistance to diet-induced obesity in germ-free mice. *Proc Natl Acad Sci USA*. 2007;104(3):979-84.
9. Le Roy T, Llopis M, Lepage P, Bruneau A, Rabot S, Bevilacqua C, et al. Intestinal microbiota determines development of non-alcoholic fatty liver disease in mice. *Gut*. 2013;62(12):1787-94.
10. Quigley EM, Monsour HP. The gut microbiota and the liver: implications for clinical practice. *Expert Rev Gastroenterol Hepatol*. 2013;7(8):723-32.
11. Machado MV, Cortez-Pinto H. Gut microbiota and nonalcoholic fatty liver disease. *Ann Hepatol*. 2012;11(4):440-9.
12. Cummings JH, Pomare EW, Branch WJ, Naylor CP, Macfarlane GT. Short chain fatty acids in human large intestine, portal, hepatic and venous blood. *Gut*. 1987;28(10):1221-7.
13. Ríos-Covián D, Ruas-Madiedo P, Margolles A, Gueimonde M, de Los Reyes-Gavilán CG, Salazar N. Intestinal short chain fatty acids and their link with diet and human health. *Front Microbiol*. 2016;7:185.
14. Pingitore A, Chambers ES, Hill T, Maldonado IR, Liu B, Bewick G, et al. The diet-derived short chain fatty acid propionate improves beta-cell function in humans and stimulates insulin secretion from human islets in vitro. *Diabetes Obes Metab*. 2017;19(2):257-65.
15. Chambers ES, Viardot A, Psichas A, Morrison DJ, Murphy KG, Zac-Varghese SE, et al. Effects of targeted delivery of propionate to the human colon on appetite regulation, body weight maintenance and adiposity in overweight adults. *Gut*. 2015;64(11):1744–54.
16. Zhao L, Zhang F, Ding X, Wu G, Lam YY, Wang X, et al. Gut bacteria selectively promoted by dietary fibers alleviate type 2 diabetes. *Science*. 2018;359(6380):1151-6.
17. Borody TJ, Paramsothy S, Agrawal G. Fecal microbiota transplantation: indications, methods, evidence, and future directions. *Curr Gastroenterol Rep*. 2013;15(8):337.
18. Meyer F, Paarmann D, D'Souza M, Olson R, Glass EM, Kubal M, et al. The metagenomics RAST server - a public resource for the automatic phylogenetic and functional analysis of metagenomes. *BMC Bioinformatics*. 2008;9:386.
19. Chen D, Chen G, Wan P, Hu B, Chen L, Ou S, et al. Digestion under saliva, simulated gastric and small intestinal conditions and fermentation in vitro of polysaccharides from the flowers of *Camellia sinensis* induced by human gut microbiota. *Food Funct*. 2017;8(12):4619-29.
20. Kapoor E, Collazo-Clavell ML, Faubion SS. Weight gain in women at midlife: a concise review of the pathophysiology and strategies for management. *Mayo Clin Proc*. 2017;92(10):1552-8.

21. [Martinez MN](#), [Emfinger CH](#), [Overton M](#), [Hill S](#), [Ramaswamy TS](#), [Cappel DA](#), et al. Obesity and altered glucose metabolism impact HDL composition in CETP transgenic mice: a role for ovarian hormones. *JLipid Res.* 2012;53(3):379-389.
22. Wagner JD, Thomas MJ, Williams JK, Zhang L, Greaves KA, Cefalu WT. Insulin sensitivity and cardiovascular risk factors in ovariectomized monkeys with estradiol alone or combined with norgestrel acetate. *J Clin Endocrinol Metab.* 1998;83(3):896-901.
23. Qin N, Yang F, Li A, Prifti E, Chen Y, Shao L, et al. Alterations of the human gut microbiome in liver cirrhosis. *Nature.* 2014;513(7516):59-64.
24. Loomba R, Seguritan V, Li W, Long T, Klitgord N, Bhatt A, et al. Gut microbiome-based metagenomic signature for non-invasive detection of advanced fibrosis in human nonalcoholic fatty liver disease. *Cell Metab.* 2017;25(5):1054-62.
25. Del Chierico F, Nobili V, Vernocchi P, Russo A, [De Stefanis C](#), Gnani D, et al. Gut microbiota profiling of pediatric nonalcoholic fatty liver disease and obese patients unveiled by an integrated meta-omics-based approach. *Hepatology.* 2017;65(2):451-64.
26. Boursier J, Mueller O, Barret M, Machado M, Fizanne L, Araujo-Perez F, et al. The severity of nonalcoholic fatty liver disease is associated with gut dysbiosis and shift in the metabolic function of the gut microbiota. *Hepatology.* 2016;63(3):764-75.
27. [Rabot S](#), [Membrez M](#), [Bruneau A](#), [Gérard P](#), [Harach T](#), [Moser M](#), et al. Germ-free C57BL/6J mice are resistant to high-fat-diet-induced insulin resistance and have altered cholesterol metabolism. *Faseb J.* 2010;24(12):4948-59.
28. [Kreznar JH](#), [Keller MP](#), [Traeger LL](#), [Rabaglia ME](#), [Schueler KL](#), [Stapleton DS](#), et al. Host genotype and gut microbiome modulate insulin secretion and diet-induced metabolic phenotypes. *Cell Rep.* 2017;18(7):1739-50.
29. [Zhao Y](#), [Chen F](#), [Wu W](#), [Sun M](#), [Bilotta AJ](#), [Yao S](#), et al. GPR43 mediates microbiota metabolite SCFA regulation of antimicrobial peptide expression in intestinal epithelial cells via activation of mTOR and STAT3. *Mucosal Immunology.* 2018;11(3):752-62.
30. [Lai CY](#), [Sung J](#), [Cheng F](#), [Tang W](#), [Wong SH](#), [Chan PKS](#), et al. Systematic review with meta-analysis: review of donor features, procedures and outcomes in 168 clinical studies of faecal microbiota transplantation. *Aliment Pharmacol Ther.* 2019;49(4):354-63.
31. [Le Roy T](#), [Llopis M](#), [Lepage P](#), [Bruneau A](#), [Rabot S](#), [Bevilacqua C](#), et al. Intestinal microbiota determines development of nonalcoholic fatty liver disease in mice. *Gut.* 2013;62(12):1787-94.
32. Loomba R, Seguritan V, Li W, Long T, Klitgord N, Bhatt A, et al. Gut microbiome-based metagenomic signature for non-invasive detection of advanced fibrosis in human nonalcoholic fatty liver disease. *Cell Metab.* 2017;25(5):1054-62.
33. Michail S, Lin M, Frey MR, Fanter R, Paliy O, Hilbush B, et al. Altered gut microbial energy and metabolism in children with nonalcoholic fatty liver disease. *FEMS Microbiol Ecol.* 2015;91(2):1-9.
34. Sharpton SR, Yong GJM, Terrault NA, Lynch SV. Gut microbial metabolism and nonalcoholic fatty liver disease. *Hepatol Commun.* 2018;3(1):29-43.

35. Ding Y, Yanagi K, Cheng C, Alaniz RC, Lee K, Jayaraman A. Interactions between gut microbiota and non-alcoholic liver disease: the role of microbiota-derived metabolites. *Pharmacol Res.* 2019;141:521-29.
36. Vyas D, Kadegowda AKG, Erdman RA. Dietary conjugated linoleic Acid and hepatic steatosis: species-specific effects on liver and adipose lipid metabolism and gene expression. *J Nutr Metab.* 2012;2012:932928.
37. Sun B, Jia Y, Hong J, Sun Q, Gao S, Hu Y, et al. Sodium butyrate ameliorates high-fat-diet-induced nonalcoholic fatty liver disease through peroxisome proliferator-activated receptor alpha-mediated activation of beta oxidation and suppression of inflammation. *J Agric Food Chem.* 2018;66(29):7633-42.
38. Zhou D, Chen YW, Zhao ZH, Yang RX, Xin FZ, Liu XL, et al. Sodium butyrate reduces high-fat diet-induced non-alcoholic steatohepatitis through upregulation of hepatic GLP-1R expression. *Exp Mol Med.* 2018;50(12):157.

Figures

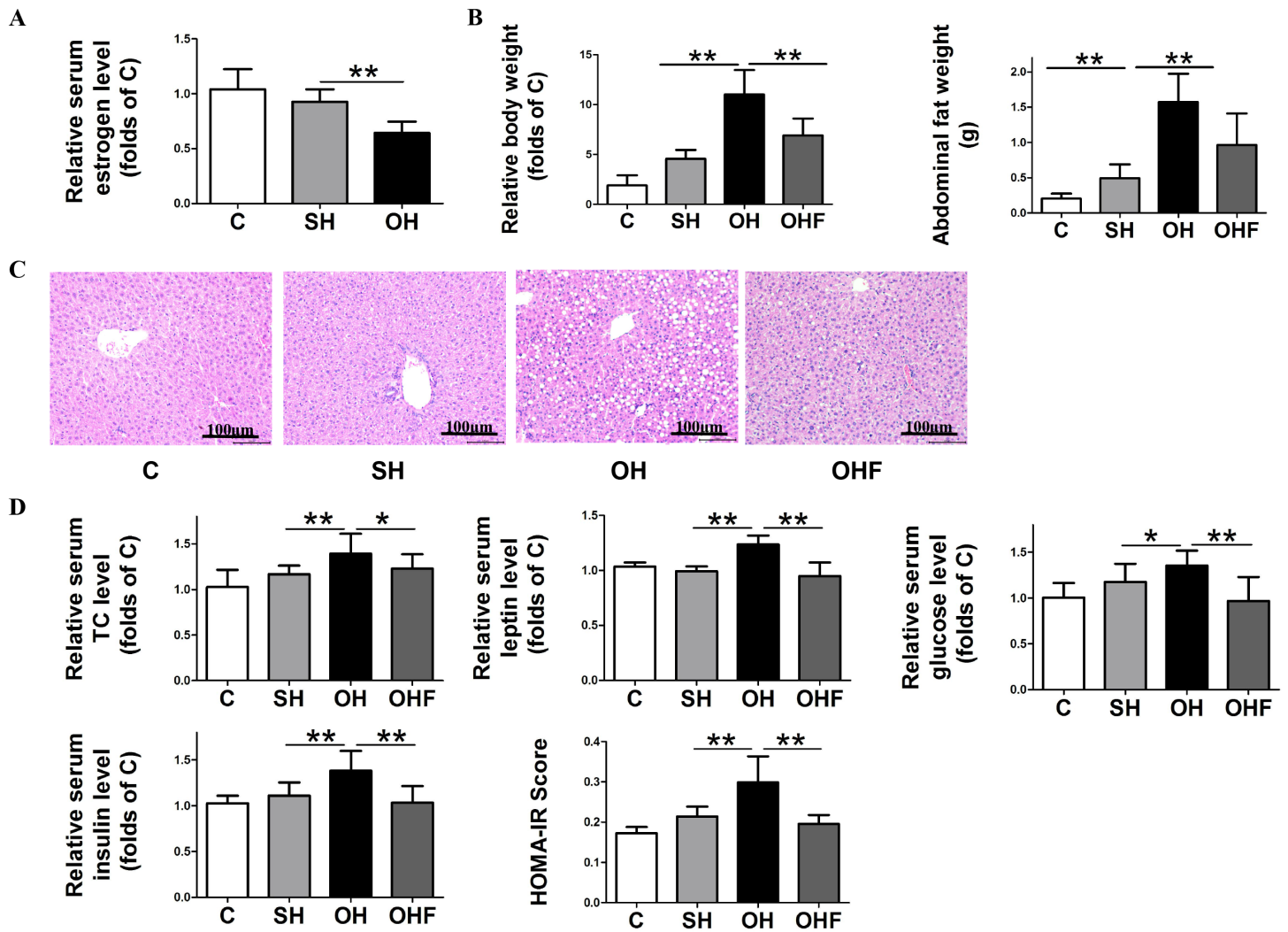


Figure 2

Estrogen deficiency aggravated NAFLD in mice. Interfering with gut microbiota alleviated NAFLD. Tissue and serum were obtained from mice sacrificed at 4 w after ovariectomy and HFD. A: Comparison of estrogen level among the C, SH and OH groups. B: The body and abdominal fat weight among the four groups. C: Liver tissues stained with hematoxylin and eosin. D: Serum TC, leptin, glucose, and insulin level. C, normal diet; SH, sham+HFD; OH, OVX+HFD; OHF, OVX+HFD+FMT; OVX, ovariectomy; HFD, high fat diet; FMT, fecal transplantation; TC, total cholesterol. Values are means \pm S.D of eight animals. normal diet. *P < 0.05; **P < 0.01.

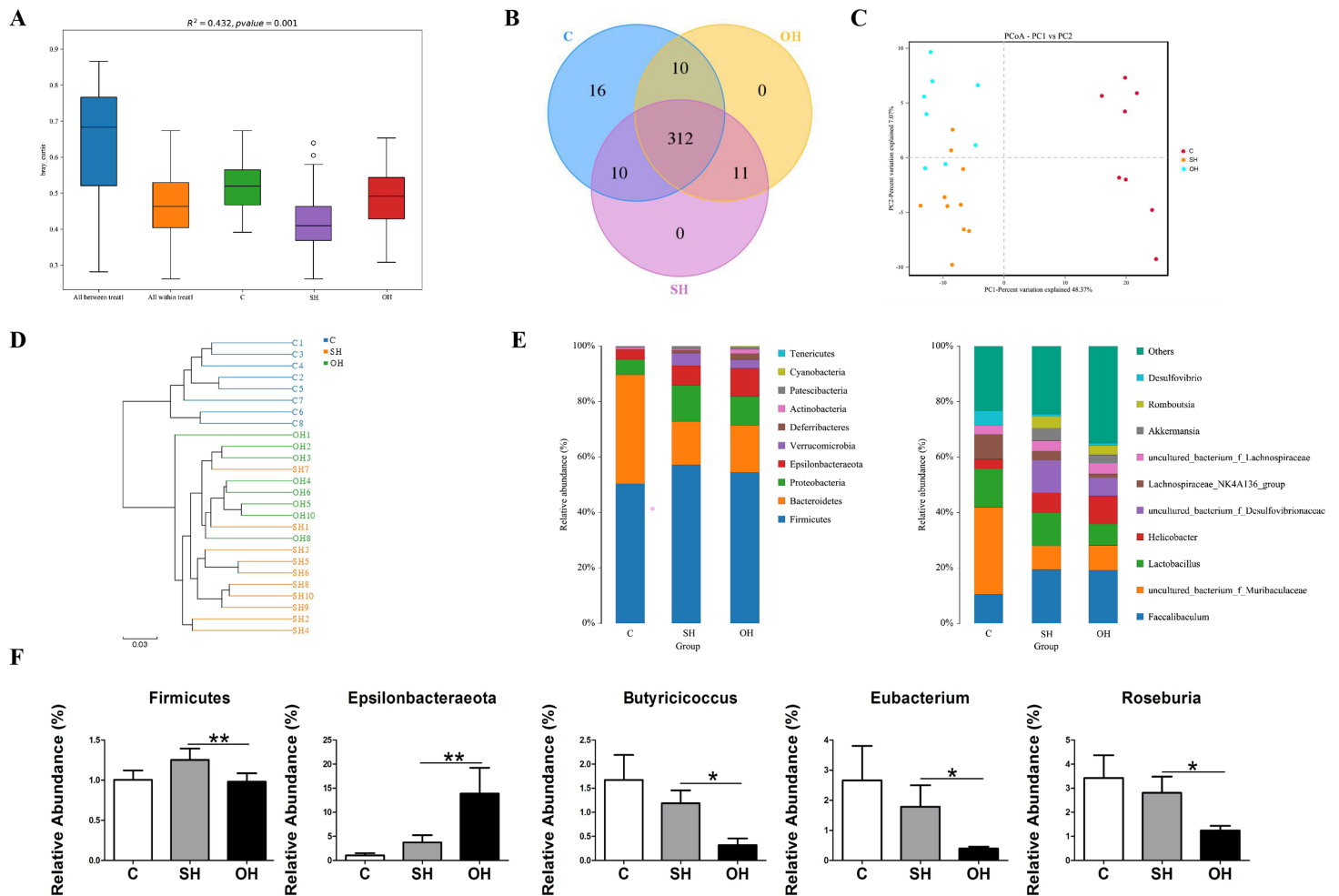


Figure 3

Estrogen reduction changed the structure of gut microbiota in OH model mice. A: Shannon index calculated after rarefying to an equal number of sequence reads for all samples. The Shannon indexes were decreased after OVX and HFD treatments. B: Venn diagram indicating the differential numbers of OTUs in each group. C: PCoA score based on weighted Unifrac metrics differed in each group. D: System clustering tree of gut microbiota based on weighted Unifrac metrics indicated the different beta diversity of gut microbiota in each group. E: OVX and HFD treatment changed the microbial community at the phylum and genus levels. F: The relative abundance of Firmicutes, Butyricicoccus, Eubacterium and Roseburia was decreased, whereas Epsilonbacteraeota was increased in the OH group compared with the SH group. C, normal diet (n=8); SH, sham+HFD (n=8); OH, OVX+HFD (n=8), OVX, ovariectomy; HFD, high fat diet. * $P < 0.05$; ** $P < 0.01$.

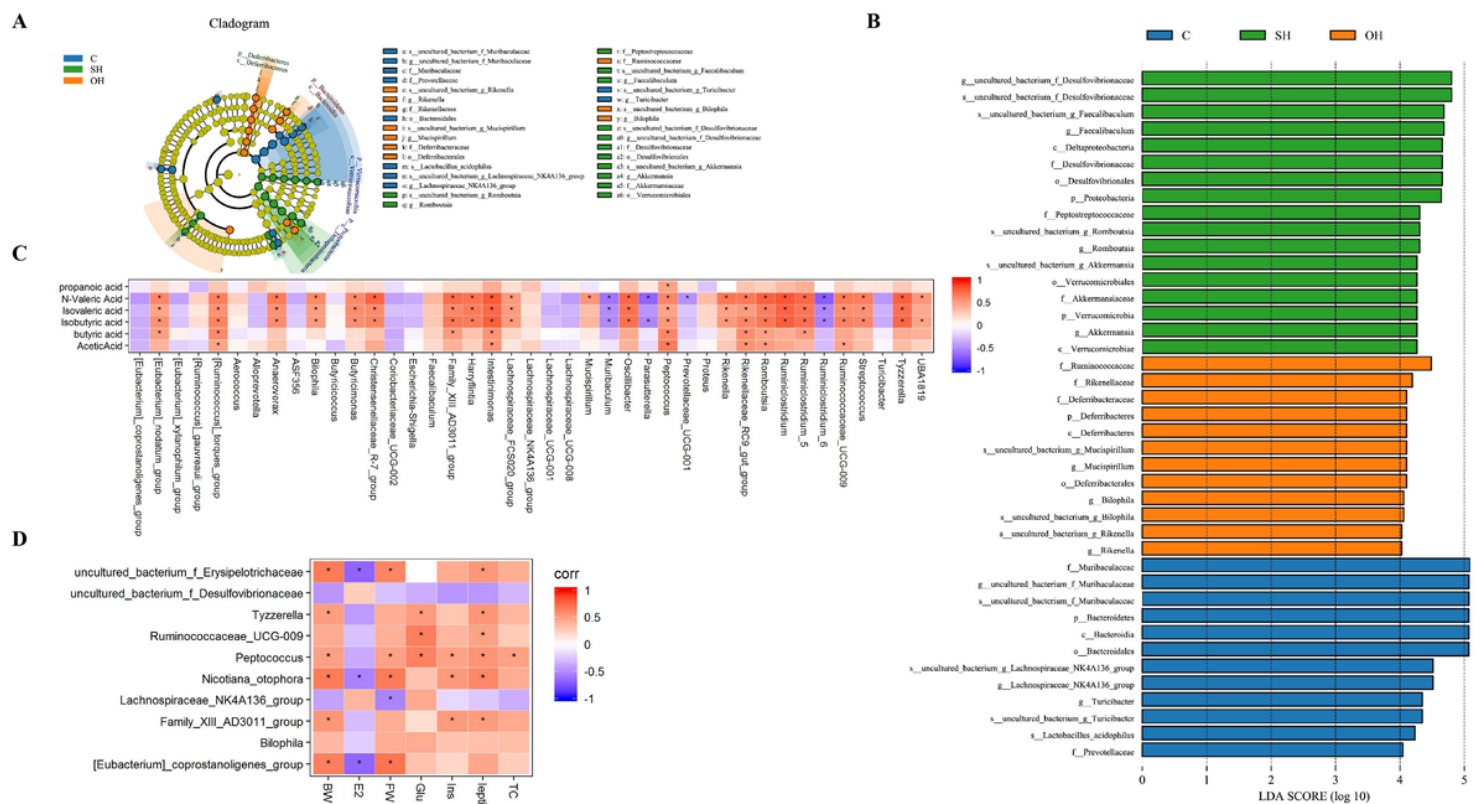


Figure 4

Analysis of gut microbiota in mice. A: Cladogram of gut microbiota in each group. B: LEfSe analysis shows differentially abundant genera as biomarkers determined using the Kruskal-Wallis test ($P < 0.05$) with LDA score > 3.5 . C, D: Correlation between the gut bacterial genera and SCFA (C) or serum indicator (D). C, normal diet ($n=8$); SH, sham+HFD ($n=8$); OH, OVX+HFD ($n=8$); OVX, ovariectomy; HFD, high fat diet; BW, body weight; E2, estradiol; FW, abdominal fat weight; Glu, glucose; Ins, insulin; TC, total cholesterol.

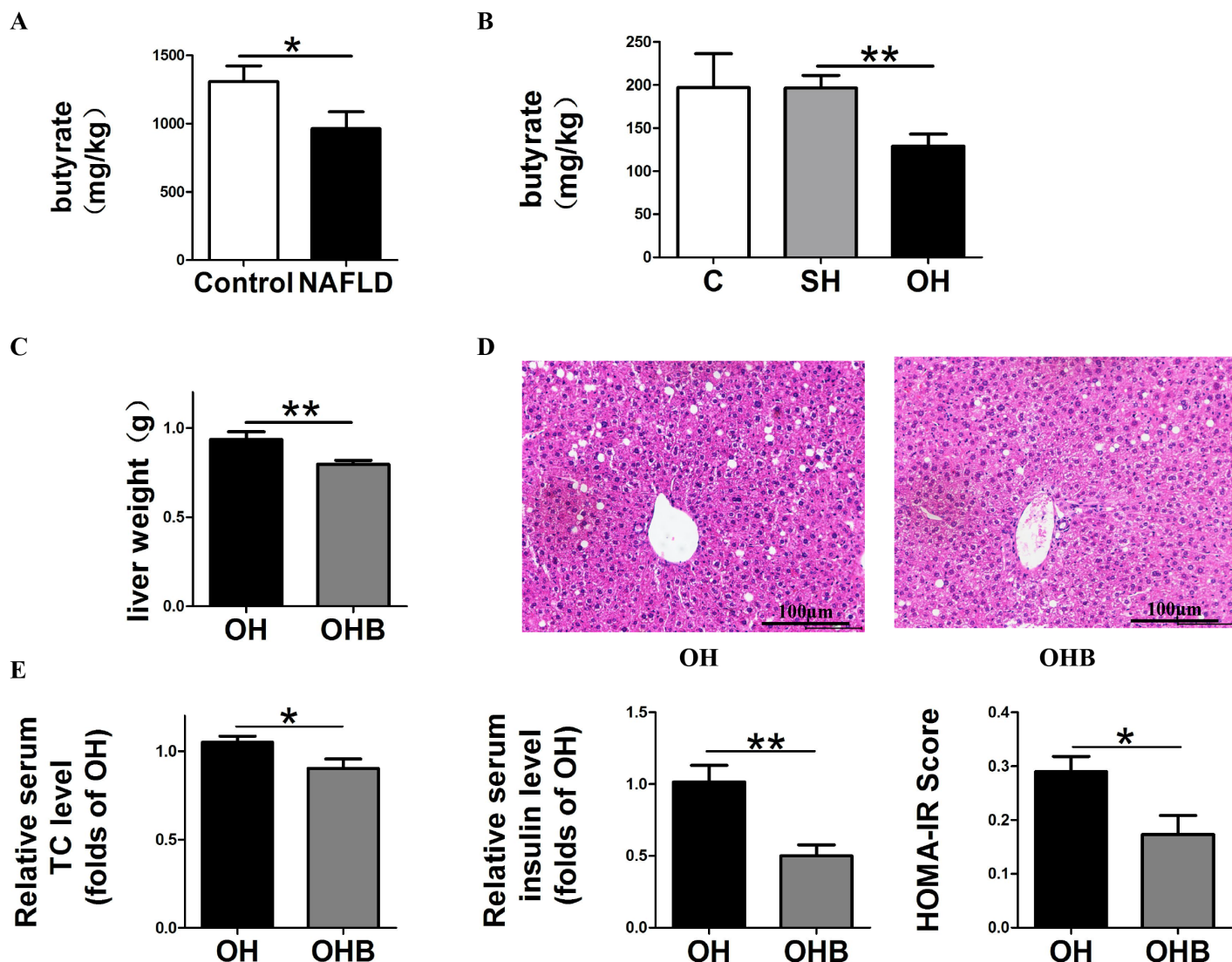


Figure 5

Butyrate was decreased in the NAFLD patients and OH mice. Supplement with butyrate eased NAFLD. After 4 w of ovariectomy and high fat diet, the OH mice received another 4 w of butyrate feeding (named OHB). A: Butyrate contents in the NAFLD patient with decreased estrogen. B: Butyrate contents in the C, SH and OH mice groups. C: Comparison of liver weight between OH and OHB groups. D: Liver tissues stained with hematoxylin and eosin. E: Serum TC, insulin and HOMA-IR level. C, normal diet; SH, sham+HFD; OH, OVX+HFD; OHB, OVX+HFD+butyrate; OVX, ovariectomy; HFD, high fat diet; TC, total cholesterol. Values are means \pm S.D of eight animals.*P < 0.05; **P < 0.01.

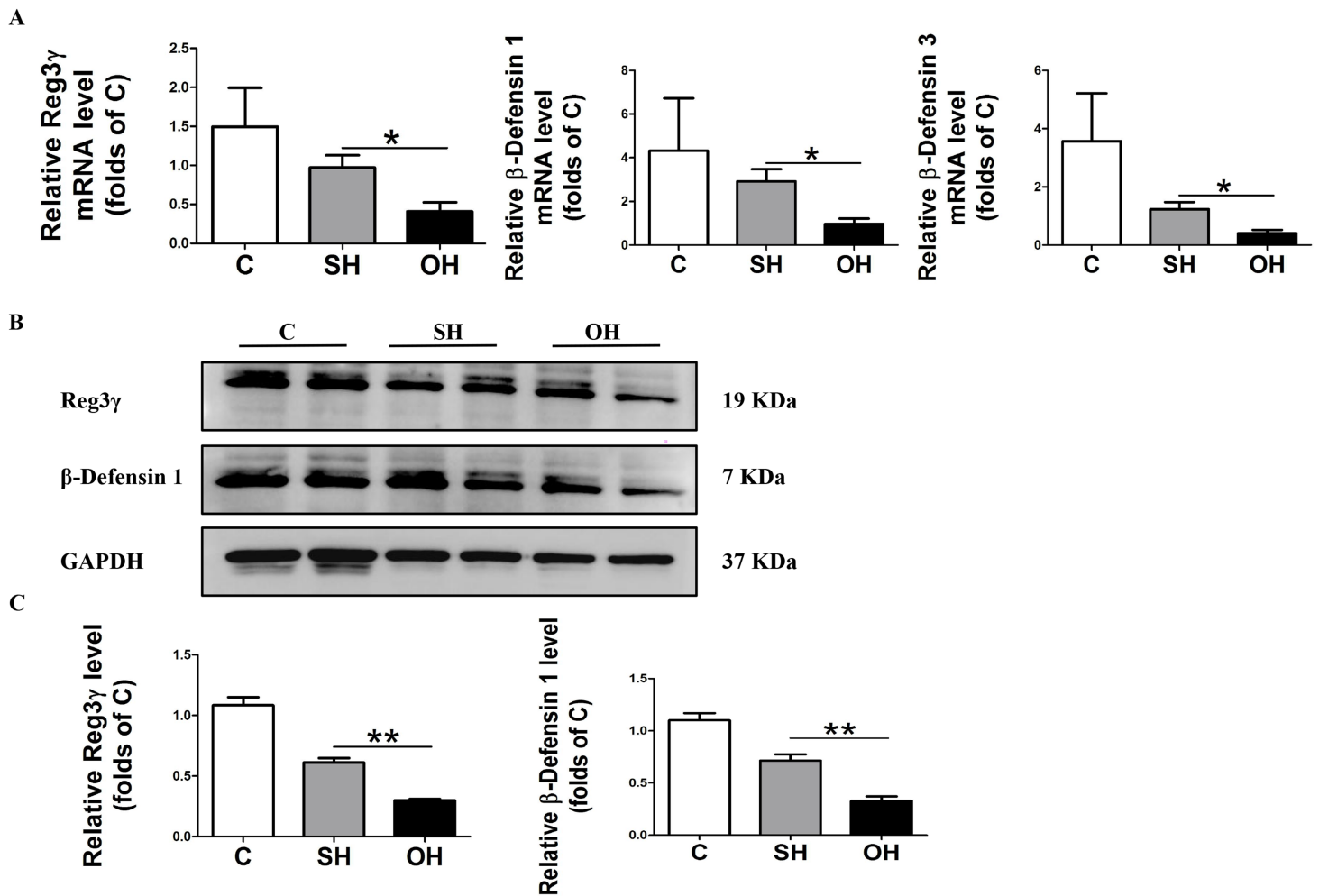


Figure 6

Decreased production of Reg3 γ and β -defensins in IEC of OH mice. IEC were isolated from the small intestines of C, SH and OH mice, respectively. A: IEC expression of Reg3 γ and β -defensins 1 and 3 in OH and the control mice were determined by qRT-PCR. B: Protein levels of Reg3 γ and β -defensins 1 were determined by western blot. C: Relative density ratio of Reg3 γ and β -defensins 1. IEC, intestinal epithelial cell; qRT-PCR, quantitative real-time polymerase chain reaction; C, normal diet; SH, sham+HFD; OH, OVX+HFD; OVX, ovariectomy; HFD, high fat diet. Values are means \pm S.D of eight animals. *P < 0.05; **P < 0.01.

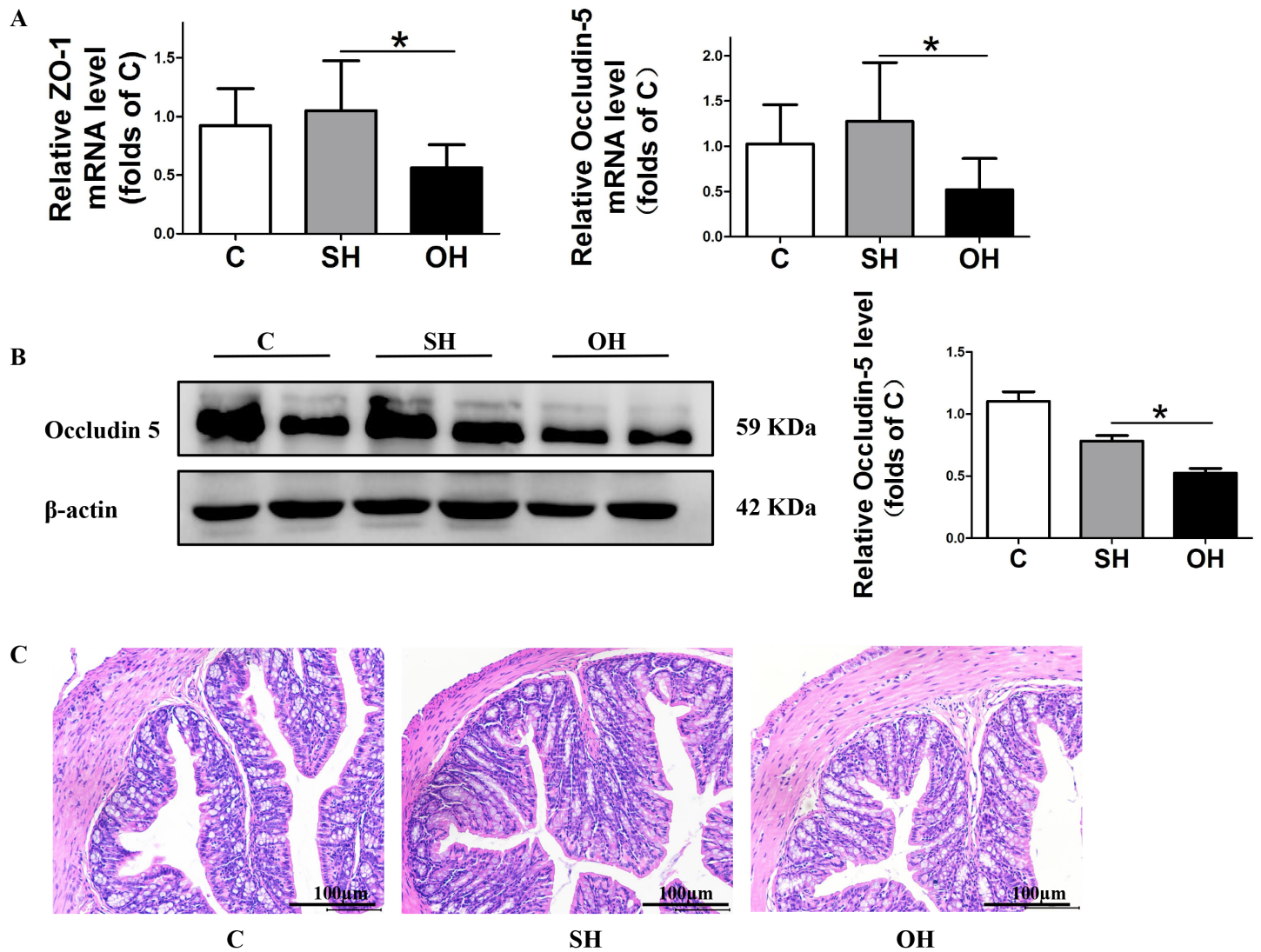


Figure 7

Analysis of the activity of tight junction protein in the small intestine in the mice. A: RT-qPCR analysis of the mRNA level of ZO-1 and Occludin-5. B: Western blots and density ratios of Occludin-5. C: Representative histological staining (H&E) of small intestine tissue. C, normal diet; SH, sham+HFD; OH, OVX+HFD; OVX, ovariectomy; HFD, high fat diet. Values are means \pm S.D of eight animals. *P < 0.05.

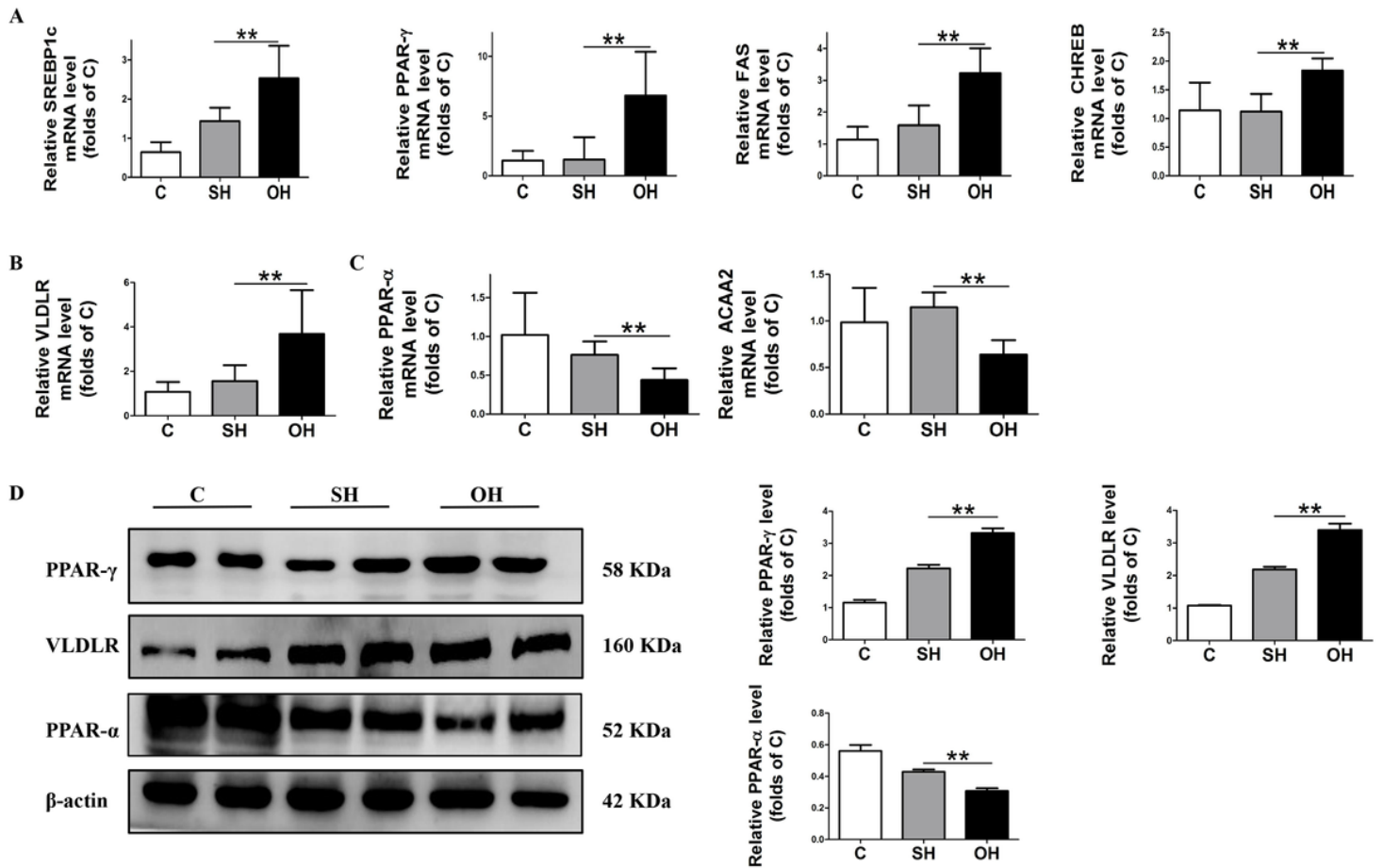


Figure 8

Expression of fatty acid synthesis, intake, and oxidation related genes and proteins in the mice. A: Analysis with qRT-PCR on the expression of SREBP1, PPAR- γ , FAS and CHREB in the three groups. B: Analysis with qRT-PCR on the expression of VLDLR in the three groups. C: Analysis with qRT-PCR on the expression of PPAR- α and ACAA2 in the three groups. D: Western-assisted analysis and relative density ratio of PPAR- γ , VLDLR, PPAR- α . C, normal diet; SH, sham+HFD; OH, OVX+HFD; OVX, ovariectomy; HFD, high fat diet. Values are means \pm S.D of eight animals. **P < 0.01.

Supplementary Files

This is a list of supplementary files associated with this preprint. Click to download.

- [AdditionalfilerawimageofWB.ppt](#)