

**Effects of rhBMP-2 loaded hydroxyapatite granules/beta-tricalcium phosphate hydrogel**

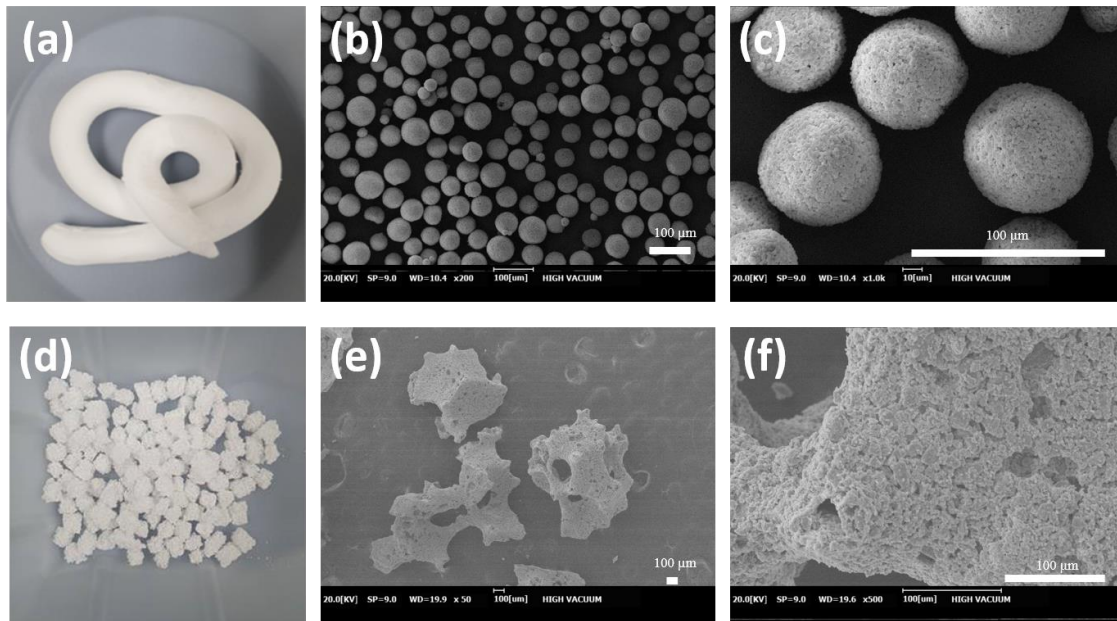
**(HA/ $\beta$ -TCP hydrogel) composite on a rat model of coccygeal intervertebral fusion**

Shinichi Nakagawa<sup>1</sup>, MD, Rintaro Okada<sup>2</sup>, MD, PhD, Junichi Kushioka<sup>1</sup>, MD, PhD, Joe Kodama<sup>3</sup>,  
MD, Hiroyuki Tsukazaki<sup>3</sup>, MD, Zeynep Bal<sup>1</sup>, PhD, Daisuke Tateiwa<sup>1</sup>, MD, Yuichiro Ukon<sup>1</sup>, MD,  
Hiromasa Hirai<sup>1</sup>, MD, Takahiro Makino<sup>1</sup>, MD, DMSc, Shota Takenaka<sup>1</sup>, MD, DMSc, Seiji Okada<sup>1</sup>,  
MD, PhD, Takashi Kaito<sup>1\*</sup>, MD, PhD

<sup>1</sup>Department of Orthopaedic Surgery, Osaka University Graduate School of Medicine, Suita, Osaka,  
Japan

<sup>2</sup>Department of Orthopaedic Surgery, Minoh Municipal Hospital, Minoh, Osaka, Japan

<sup>3</sup>Department of Orthopaedic Surgery, Kansai Rosai Hospital, Amagasaki, Hyogo, Japan



**Supplementary Figure 1.**

Macroscopic images (a;  $\beta$ -TCP hydrogel, d; HA) and two microstructural images of  $\beta$ -TCP hydrogel (b, c) and HA (e, f) with different magnifications;  $\times 200$  (b) and  $\times 1000$  (c), and  $\times 50$  (e) and  $\times 500$  (f) (bar;  $100\ \mu\text{m}$ ).