

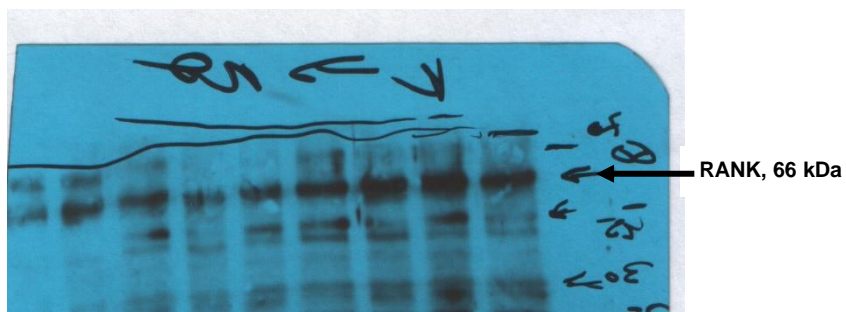
**Supplementary Information file**  
**Initial set of Western blot experiments**  
**(full-length, original, unprocessed versions of blots)**

**Table 1 Sample labelling**

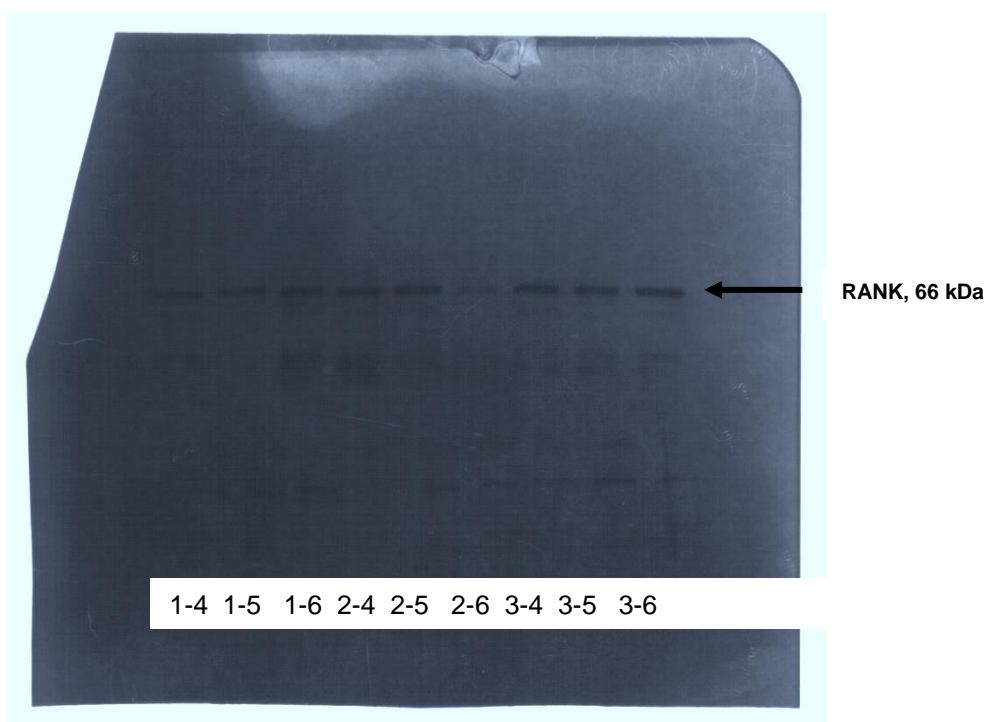
Patients	Group	Patient №	Sample labelling	Weight of bone tissue sample, g
Patients with normally erupted teeth	#1 – bone tissue, that was taken from the area of the normally erupted third molar (control group)	1	<b>1-1</b>	0.0457
		3	<b>1-2</b>	0.0522
		4	<b>1-3</b>	0.0674
		5	<b>1-4</b>	0.0575
		6	<b>1-5</b>	0.0661
		8	<b>1-6</b>	0.0355
Patients with tooth impaction	#2 – bone tissue of patients with tooth impaction, collected from the area of the normally erupted third molar	9	<b>2-1</b>	0.0341
		10	<b>2-2</b>	0.0481
		11	<b>2-3</b>	0.0452
		12	<b>2-4</b>	0.0503
		13	<b>2-5</b>	0.0388
		14	<b>2-6</b>	0.0426
	#3 – bone tissue of patients with tooth impaction, collected from the area of the impacted third molar	15	<b>3-1</b>	0.0513
		16	<b>3-2</b>	0.0641
		17	<b>3-3</b>	0.0852
		18	<b>3-4</b>	0.0374
		19	<b>3-5</b>	0.0371
		20	<b>3-6</b>	0.0509

Fig. 1 Raw data from Western blot experiments using RANK antibody

Immunoblotting was conducted with primary antibody against RANK (1:500; sc-9072, Santa Cruz, USA). Samples are labelled (according to the Table 1) under the images.



1-1 1-2 1-3 2-1 2-2 2-3 3-1 3-2 3-3

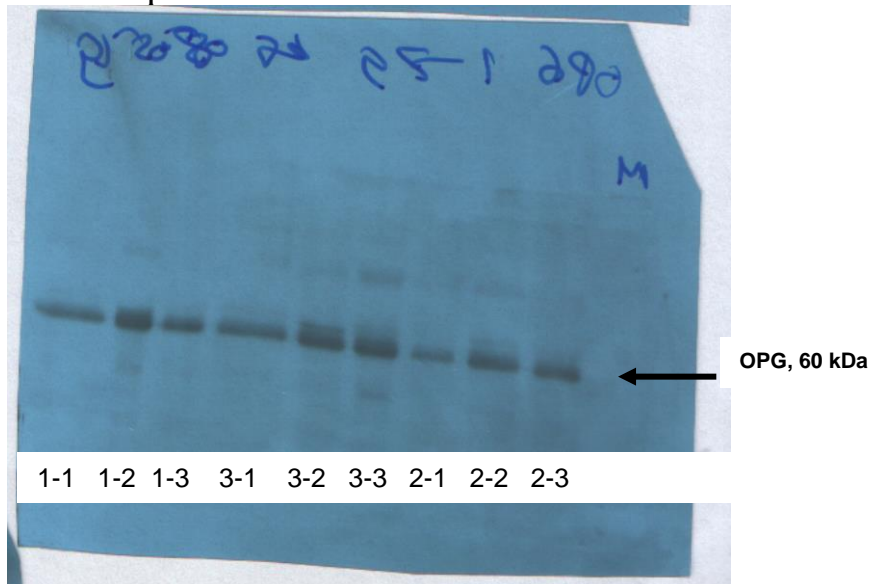


1-4 1-5 1-6 2-4 2-5 2-6 3-4 3-5 3-6

Fig. 2 Raw data from Western blot experiments using osteoprotegerin (OPG) antibody

Immunoblotting was conducted with primary antibody against OPG (1:250; sc-8468, Santa Cruz, USA). Samples are labelled (according to the Table 1) under the image.

10 sec exposition



30 sec exposition

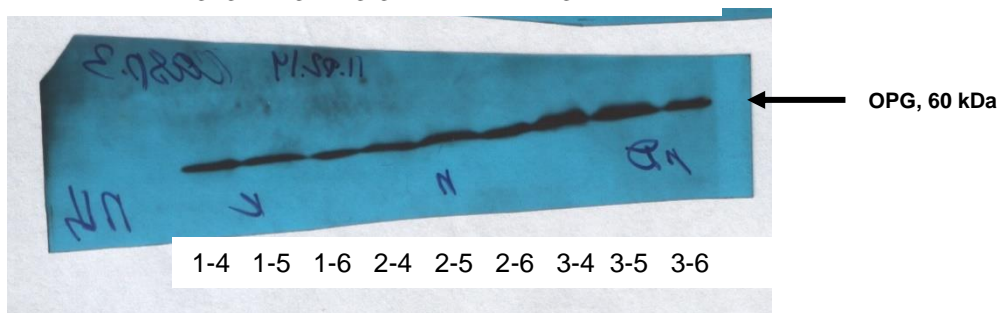
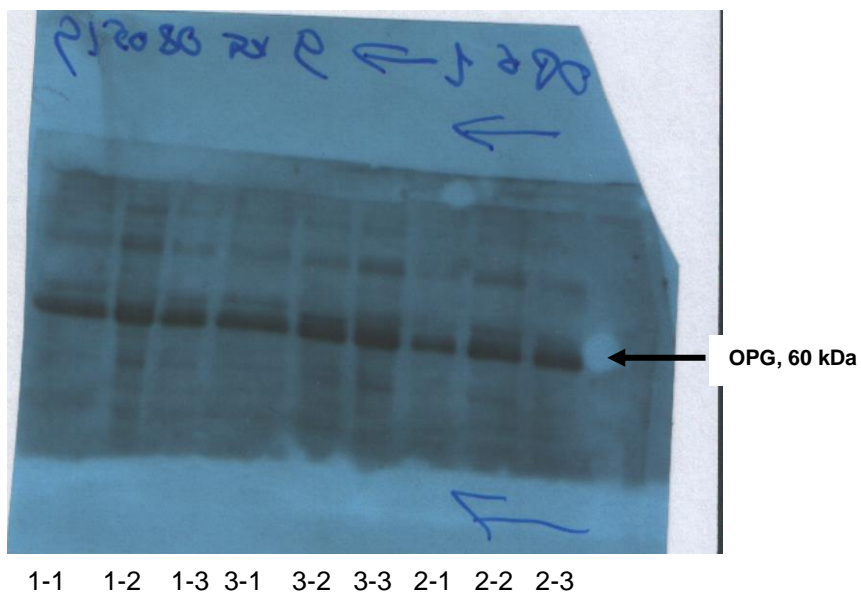
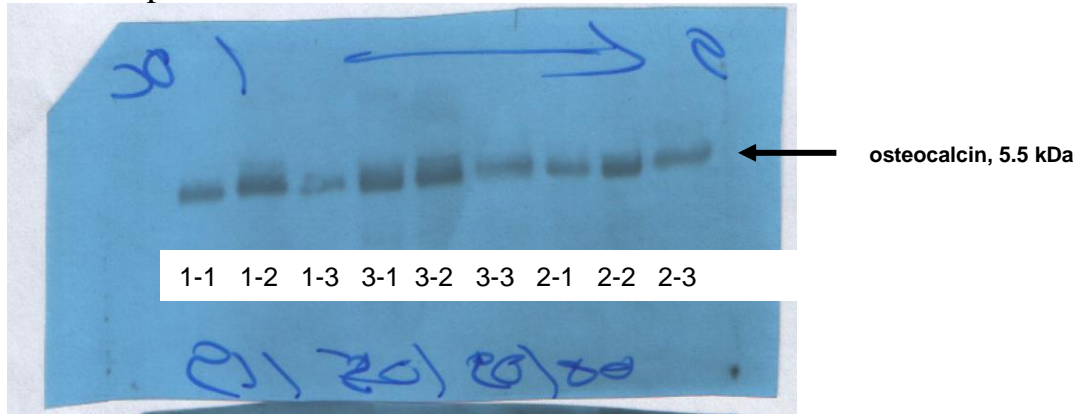


Fig. 3 Raw data from Western blot experiments using osteocalcin (OC) antibody

Immunoblotting was conducted with primary antibody against OC (1:500; sc-18319, Santa Cruz, USA). Samples are labelled (according to the Table 1) under the image.

10 sec exposition



25 sec exposition

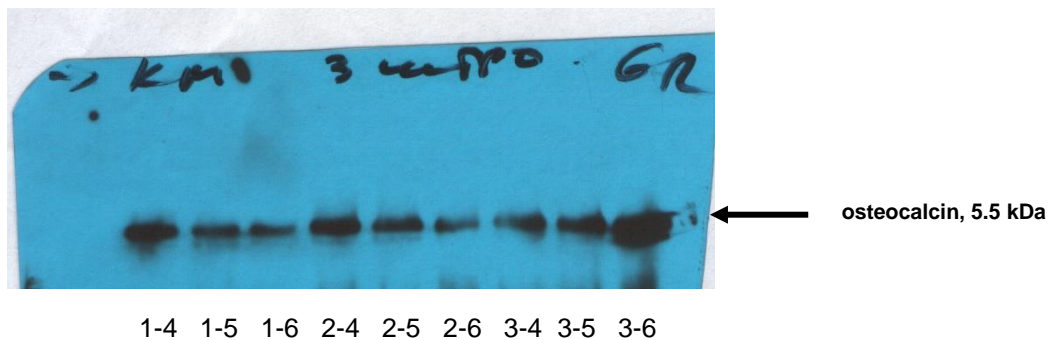
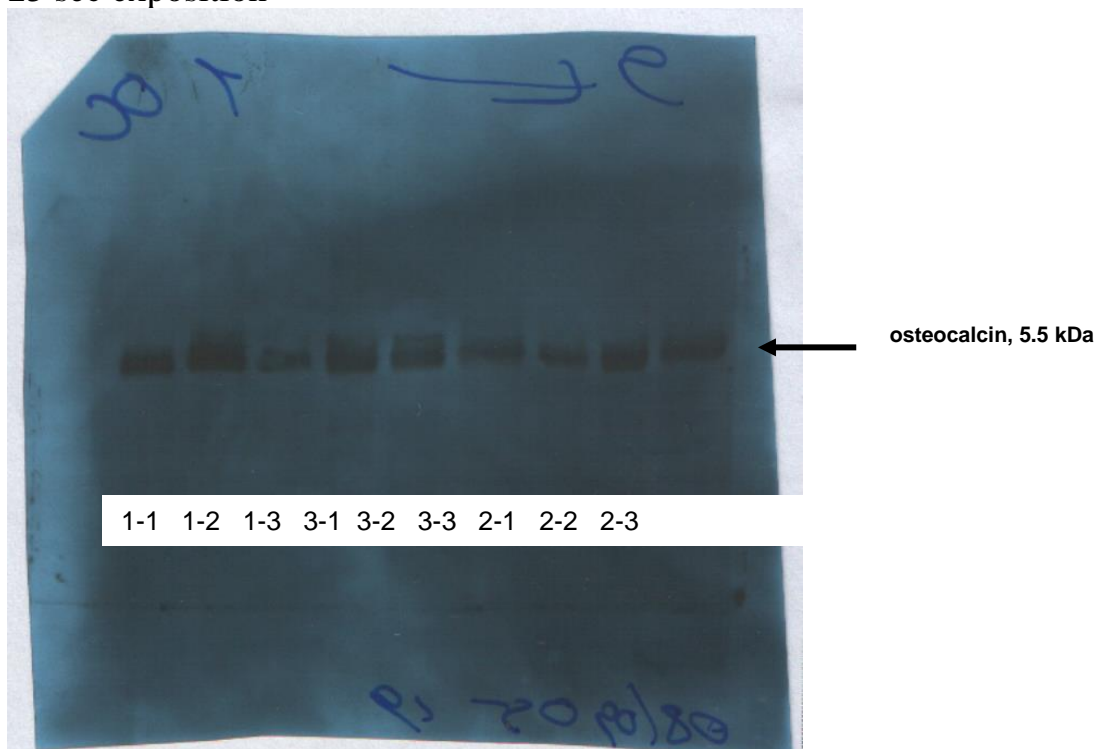


Fig. 4 Raw data from Western blot experiments using RANKL antibody

Immunoblotting was conducted with primary antibody against RANKL (1:250; sc-7628, Santa Cruz, USA). Samples are labelled (according to the Table 1) under the image.

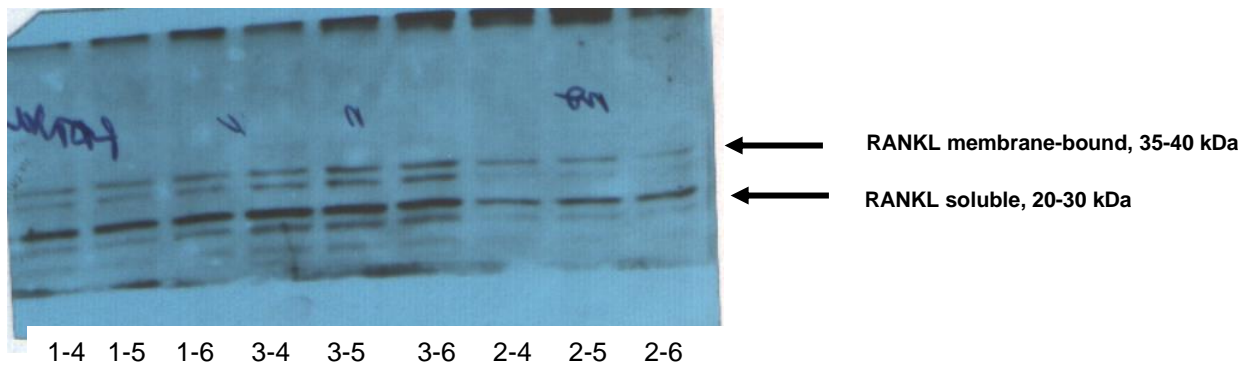
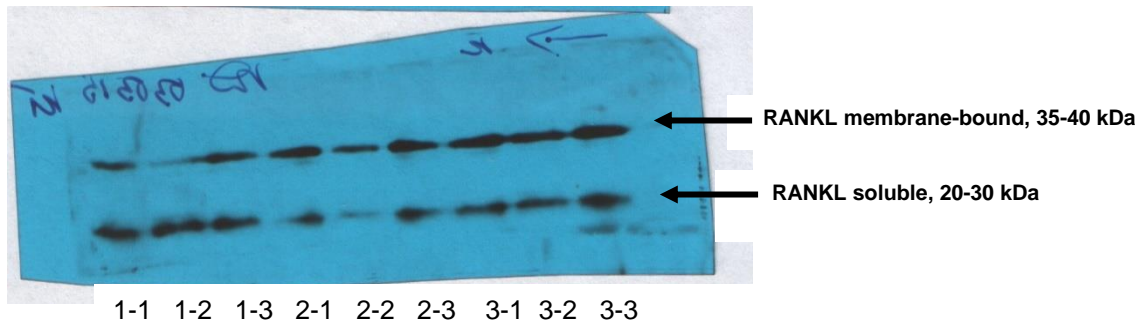


Fig. 5 Raw data from Western blot experiments using NF- $\kappa$ B antibody

Immunoblotting was conducted with primary antibody against NF- $\kappa$ B p65 subunit (1:500; MA5-16160, Thermo Fisher Scientific, USA). Samples are labelled (according to the Table 1) under the image.

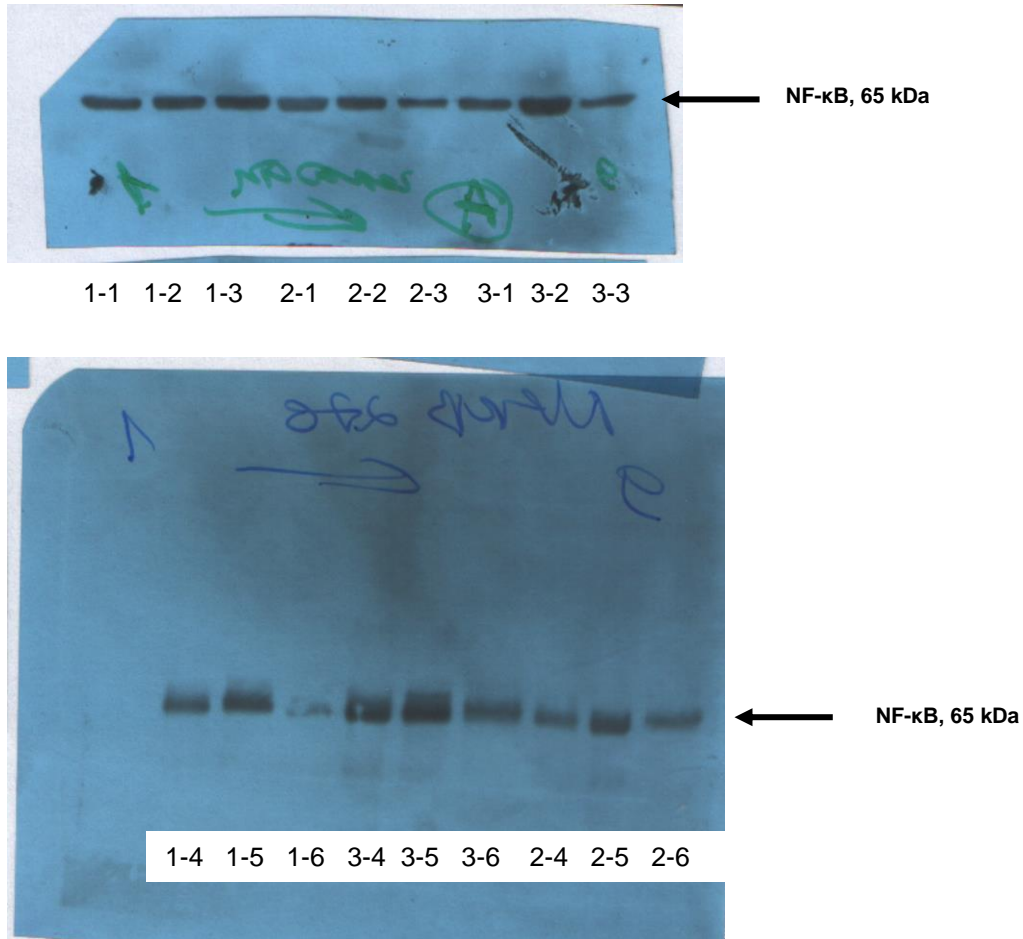


Fig. 6 Raw data from Western blot experiments using NFATc1 antibody

Immunoblotting was conducted with primary antibody against NFATc1 (1:1000; MA3-024, Thermo Fisher Scientific, USA). Samples are labelled (according to the Table 1) under the image.

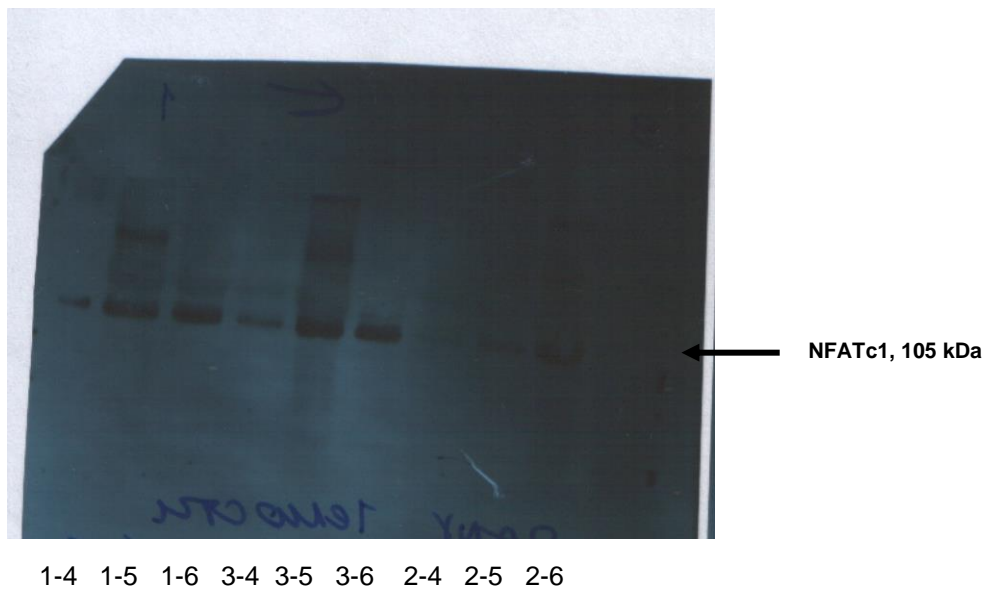
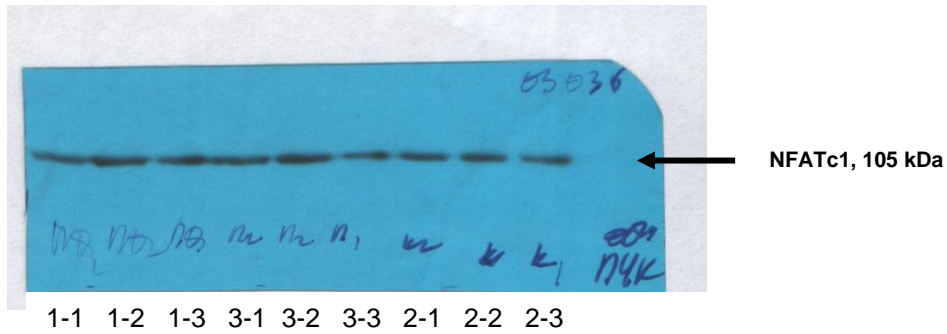


Fig. 7 Raw data from Western blot experiments using caspase-3 antibody

Immunoblotting was conducted with primary antibody against caspase-3 (1:500; sc-373730, Santa Cruz, USA). Samples are labelled (according to the Table 1) under the image.

