

Supplementary File 4:

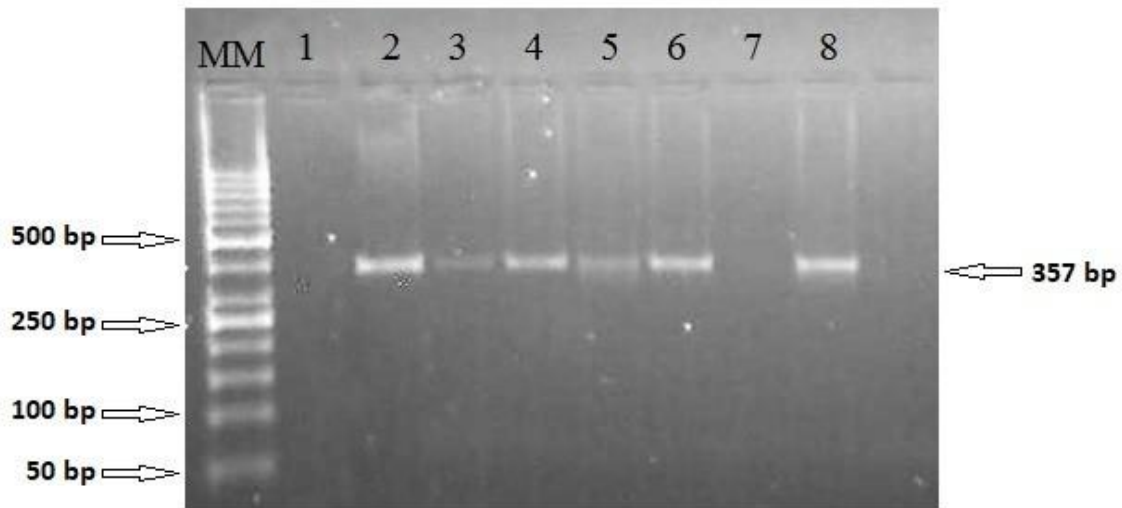


Figure 1: Representative samples of PCR amplifications of 18S rRNA gene of *Leishmania* parasites in individual human blood samples collected from four non-endemic villages in eastern Sudan. MM: molecular marker (100bp); Lane 1: negative control (Distilled water); Lane 2: Positive control (*L. donovani* DNA), Lanes 3-6, and 8: positive individuals with VL; Lane 7: negative individual.