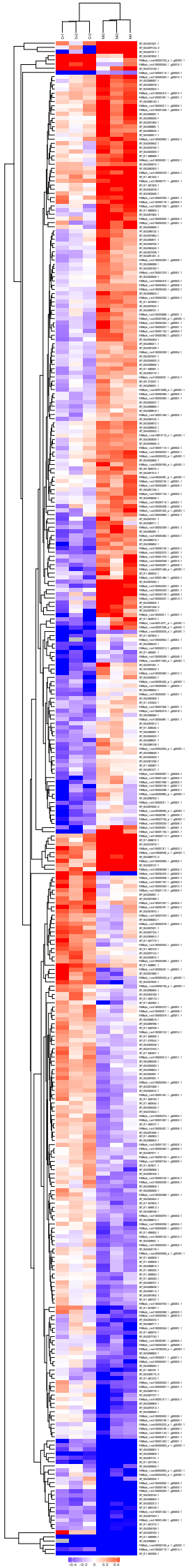
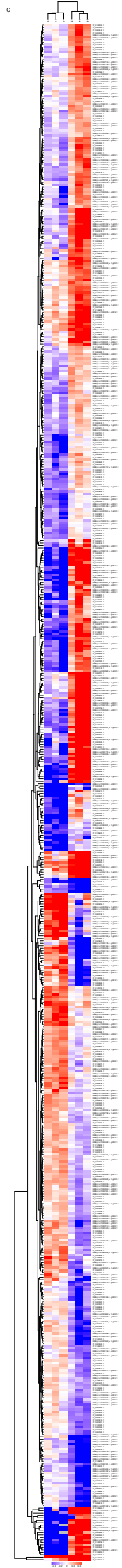


B





**Supplementary Fig. 8** Cluster analysis of differentially expressed proteins. Through horizontal comparison, samples could be classified into three categories, suggesting that the selected DEPs could effectively distinguish samples. Vertical comparison indicated that proteins could be classified into two categories with opposite directional variation, demonstrating the rationality of the selected DEPs. M, N and D correspondingly represent the DSB, ASB and RLB, respectively, (A)—DSB/ASB, (B)—RLB/DSB, (C)—RLB/ASB.