

# **Sphk1 involves in the regulation of autophagy process in cardiac myocyte cells at high glucose condition**

Wen Ai<sup>1,2\*</sup>, Peiyi Xie<sup>1,2</sup>, Li Ling<sup>1,2</sup>, Yulan Gao<sup>3</sup>, Lei Wang<sup>1,2</sup>, Hongcheng Fang<sup>4</sup>, Yanwei Chen<sup>5\*</sup>

1. Department of Cardiology, Shenzhen Nanshan People's Hospital, Shenzhen 518102, PR China

2. Department of Cardiology, The 6 th Affiliated Hospital of Shenzhen University Health Science Center, Shenzhen 518102, PR China

3. Department of Ultrasound, Shenzhen Nanshan People's Hospital, Shenzhen 518102, PR China

4. Department of Cardiology, Shenzhen Bao'an Shajing People's Hospital, Guangdong Medical University, Shenzhen 518100, PR China

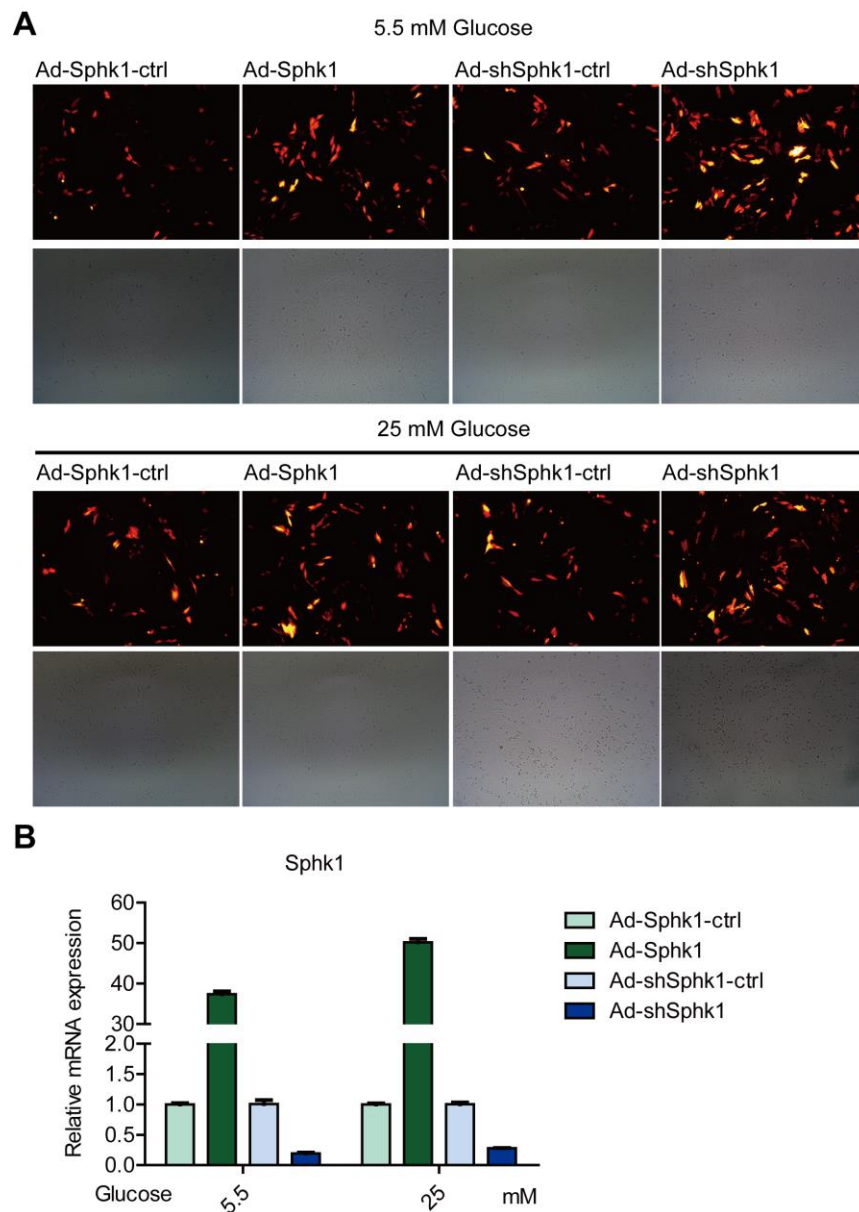
5. Shenzhen Nanshan District Shekou People's Hospital, Shenzhen 518104, PR China

**\*Correspondence to:** Yanwei Chen, Shenzhen Nanshan District Shekou People's Hospital, Shenzhen 518104, PR China, email: chenyw@szu.edu.cn

Wen Ai, Department of Cardiology, Shenzhen Nanshan People's Hospital, Shenzhen 518100, PR China, email: aiwen2018@email.szu.edu.cn

**Key words:** Sphk1; Autophagy; High glucose; Silibinin; Diabetic cardiomyopathy

## Supplementary Figures



**Supplementary Figure 1. Ad-Sphk1, Ad-Sphk1-ctrl, Ad-shSphk1 and Ad-shSphk1-ctrl successfully transduced glucose treated H9c2 cells.** (A) The fluorescence intensity and cell morphology after adenovirus infection in glucose (5.5 and 25 mM) treated H9c2 cells (48 h) measured by fluorescence microscope. (B) qRT-PCR results confirmed the successful transduction of adenoviruses in H9c2 cells.